

PRODUCT INFORMATION PACKET



Model No: 254THTPA18002
Catalog No: 254THTPA18002
10,3600,TENV,254T,3/60/230/460

Regal and Marathon are trademarks of Regal Rexnord Corporation or one of its affiliated companies.
©2024 Regal Rexnord Corporation, All Rights Reserved. MC017097E



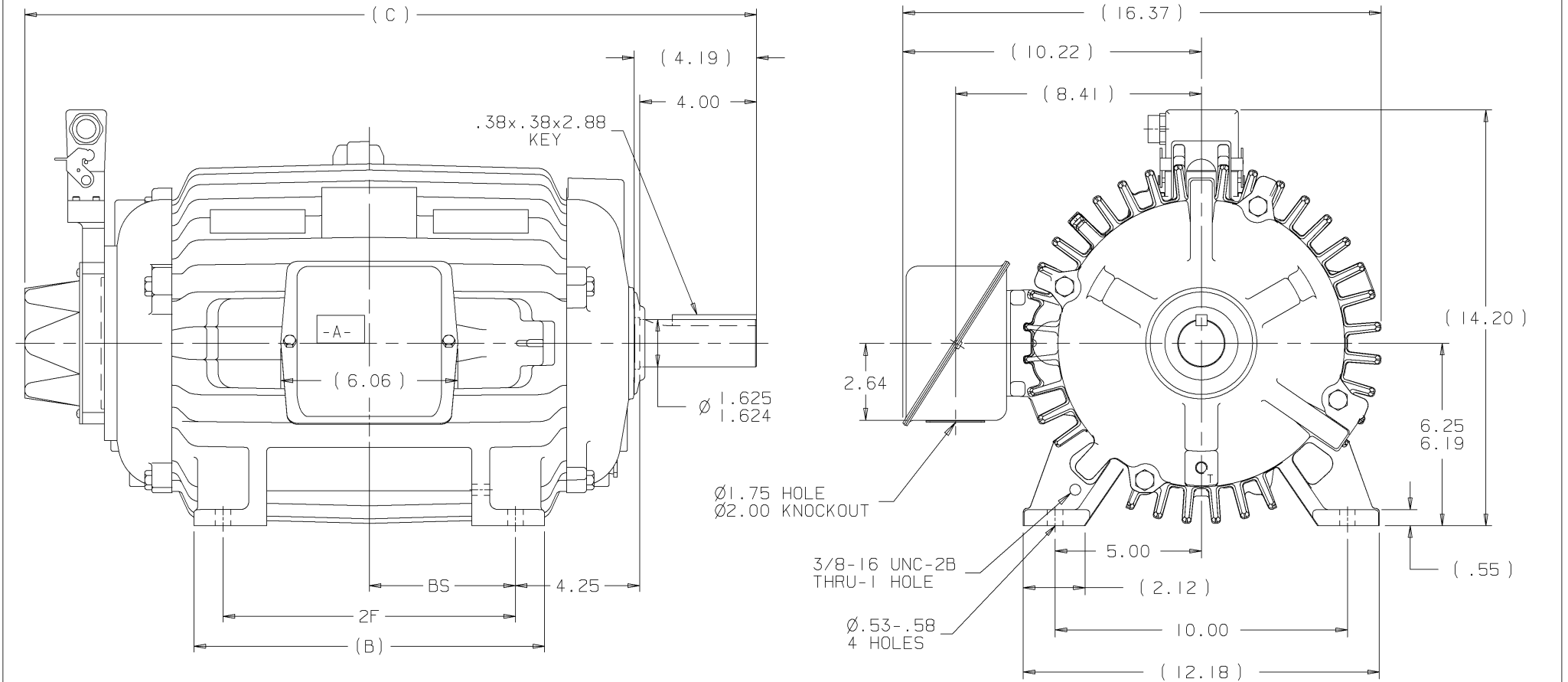
Nameplate Specifications

Phase	3	Output HP	10 Hp
Output KW	7.5 kW	Voltage	230/460 V
Speed	3525 rpm	Service Factor	1
Frame	254T	Enclosure	Totally Enclosed Non Ventilated
Thermal Protection	Thermostat	Efficiency	89.5 %
Ambient Temperature	40 °C	Frequency	60 Hz
Current	24.0/12.0 A	Power Factor	87
Duty	Continuous	Insulation Class	H
Design Code	A	KVA Code	G
Drive End Bearing Size	309	Opp Drive End Bearing Size	207
UL	Recognized	CSA	Y
CE	Y	IP Code	43
Number of Speeds	1		

Technical Specifications

Electrical Type	Squirrel Cage Inverter Duty	Starting Method	Inverter Only
Poles	2	Rotation	Reversible
Resistance Main	.955 Ohms	Mounting	Rigid Base
Motor Orientation	Horizontal	Drive End Bearing	Ball
Opp Drive End Bearing	Ball	Frame Material	Cast Iron
Shaft Type	T	Assembly/Box Mounting	F1/F2 CAPABLE
Outline Drawing	B-SS203658-1175	Connection Drawing	A-EE7308T


This is an uncontrolled document once printed or downloaded and is subject to change without notice. Date Created:09/07/2024



NOTES:

1. CONDUIT BOX CAN BE ROTATED IN 90° STEPS.
2. CONDUIT BOX CAN BE MOUNTED ON OPPOSITE SIDE REMOVING BRACKETS AND TURNING FRAME 180°.
3. NAMEPLATE TO BE READ FROM CONDUIT BOX SIDE OF MOTOR

1. CONDUIT BOX CAN BE ROTATED IN 90° STEPS.
2. CONDUIT BOX CAN BE MOUNTED ON OPPOSITE SIDE BY REMOVING BRACKETS AND TURNING FRAME 180°.
3. NAMEPLATE TO BE READ FROM CONDUIT BOX SIDE OF MOTOR

3. NAMEPLATE TO BE READ FROM CONDUIT BOX SIDE OF MOTOR											<div>✓ MAX. SURFACE ROUGHNESS UNLESS NOTED OTHERWISE</div>	UNLESS OTHERWISE SPECIFIED DIMENSIONS ARE IN INCHES TOL. ON XX±.03 XXX±.005 XXXX±.0005 ANGLES± 7'30"			
											MATL SPEC	SHEET METAL BOX		DRAWN BY DAH	05-18-2001
											FINISH	<div> MARATHON ELECTRIC WALSAU, WISCONSIN 54401</div>		CHKD BY ML	05-21-2001
												WALSAU, WISCONSIN 54401		APPD BY CAV	05-21-2001
DASH	FRAME	B	C	2F	BS		I	05-21-2001	NEW DRAWING	MU3739B	DAH	PART NAME OUTLINE - TENV - C'FACE 250T FR. - LAKESHORE SL56 TACHOMETER			DRWG NO B- SS203658
1175	254T	10.25	23.29	8.25	4.12		REV	DATE	CHANGE		NAME	DISTRIBUTION - WA - LB - WP - LM			CADD FILE NO. SS203658
1350	256T	12.00	25.04	10.00	5.00				SHOP BOOK	PURCHASED		DISTRIBUTION - WA - LB - WP - LM			CADD FILE NO. SS203658

HIGH VOLTAGE



NOTE FOR FACTORY USE ONLY:
TO SURGE TEST FOR COMMON CONNECT:
HIGH VOLT: CONNECT P1 TO T1
THEN P2 TO L1
LOW VOLT: CONNECT P1 TO T1 & T7,
THEN P2 TO L1

LOW VOLTAGE

THREE PHASE
DUAL VOLTAGE MOTOR

VIEW OF TERMINAL END

NOTE: LEAD'S COLOR CAN BE YELLOW OR WHITE FOR MT2 PLANT

DRAWING REVISION T	REVISION BY ZR	DATE 01-14-2019
ECO ECO-0159915	APPROVED BY DR	DATE 01-15-2019

ADDED TERMINAL CONNECTION DIAGRAM

COPYRIGHT REGAL BELOIT AMERICA, INC. ALL RIGHTS RESERVED.
PROPRIETARY AND CONFIDENTIAL INFORMATION - THIS DOCUMENT IS THE PROPERTY OF
REGAL BELOIT AMERICA, INC. ("OWNER") AND CONTAINS OWNER'S PROPRIETARY
INFORMATION. ANY PERSON, CORPORATION OR OTHER FIRM RECEIVING IT IS DEEMED,
BY RECEIVING IT, TO AGREE THAT IT, AND/OR ANY PART OF IT, SHALL NOT BE DISCLOSED
TO ANY PERSON, CORPORATION OR OTHER ENTITY, DUPLICATED, AND/OR USED, EXCEPT
AS EXPRESSLY APPROVED IN WRITING IN ADVANCE BY OWNER. THIS DOCUMENT SHALL
BE RETURNED TO OWNER UPON REQUEST. IT MAY BE SUBJECT TO CERTAIN
RESTRICTIONS UNDER APPLICABLE EXPORT CONTROL LAWS AND REGULATIONS.

DRAWN BY SMC	DATE 05-13-1992
APPROVED BY TB	DATE 05-13-1992
REFERENCE EE7308/EE7300	THIRD ANGLE PROJECTION

REGAL™ Regal Beloit America, Inc.

CONN DIAGRAM-INTERNAL

3 PHASE - DUAL VOLTAGE MOTOR

MATERIAL	PROCESS/FINISH
SIZE A	DRAWING NUMBER EE7308T
SHEET 1 OF 1	