

PRODUCT INFORMATION PACKET

marathon[®]
Motors

Model No: 254THTNA18039
Catalog No: 254THTNA18039
15,1800,TENV,254TC,3/60/230/460

Regal and Marathon are trademarks of Regal Rexnord Corporation or one of its affiliated companies.
©2024 Regal Rexnord Corporation, All Rights Reserved. MC017097E

The logo for Regal Rexnord, featuring a stylized 'R' icon followed by the text 'RegalRexnord'.

Nameplate Specifications

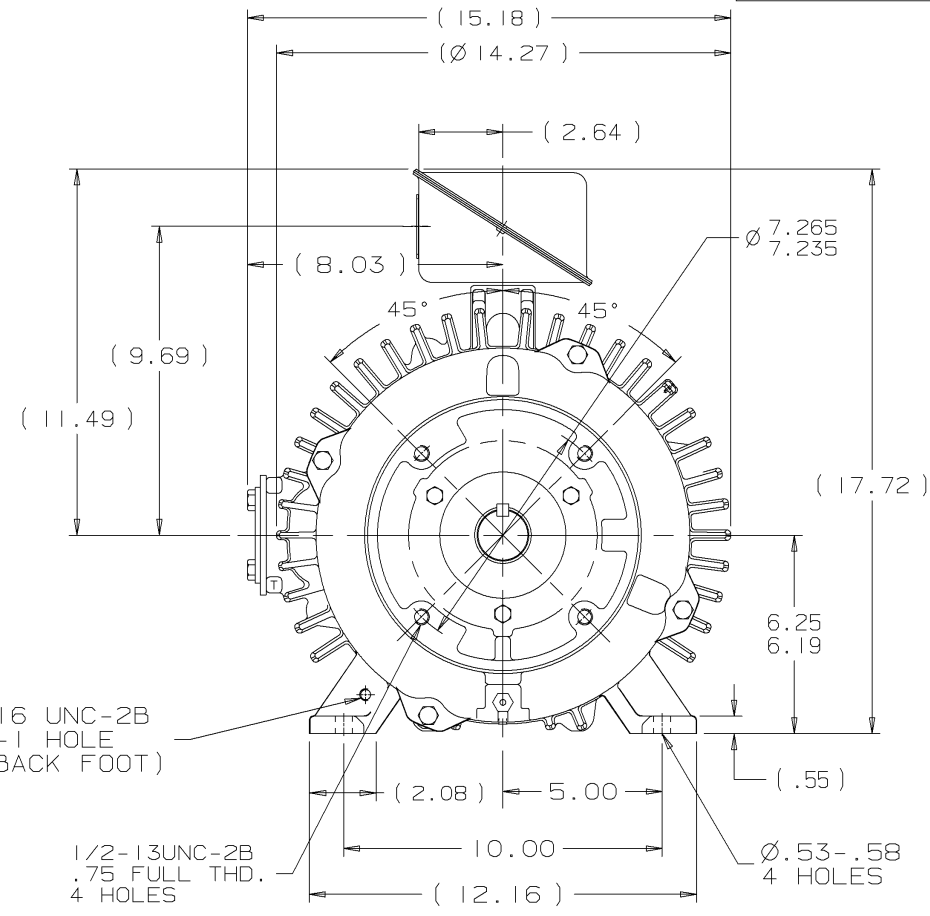
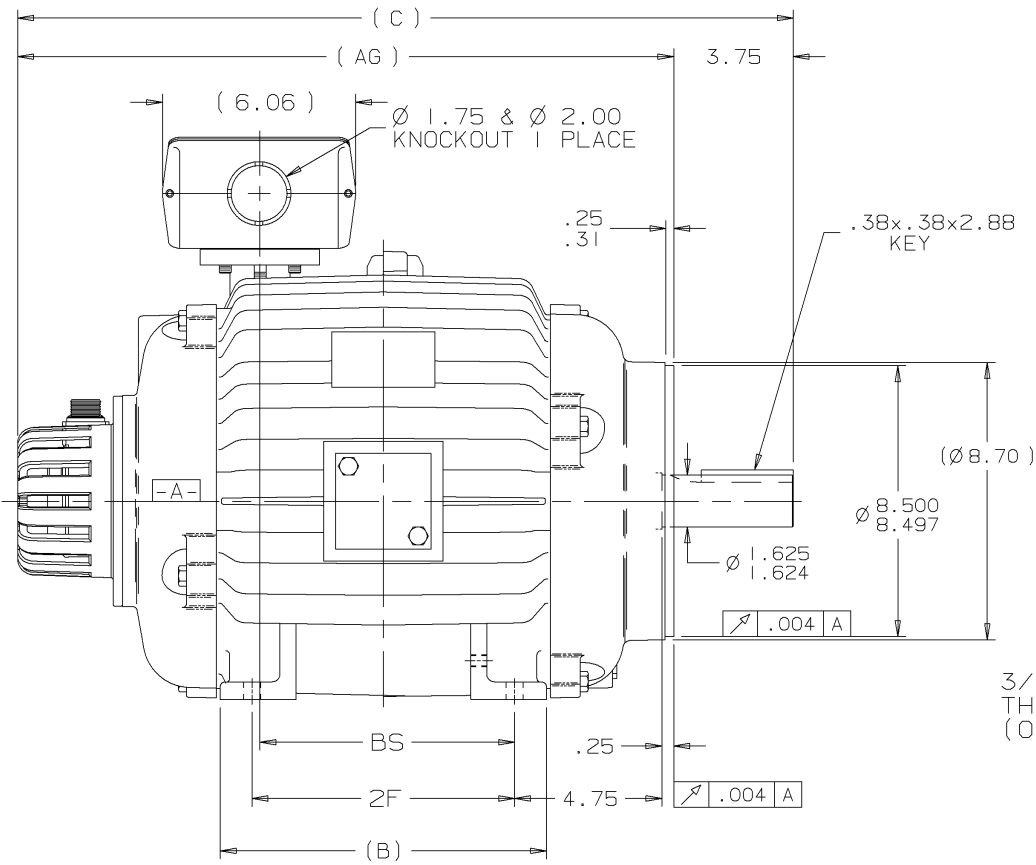
Phase	3	Output HP	15 Hp
Output KW	11.2 kW	Voltage	230/460 V
Speed	1772 rpm	Service Factor	1
Frame	254TC	Enclosure	Totally Enclosed Non Ventilated
Thermal Protection	Thermostat	Efficiency	93 %
Ambient Temperature	40 °C	Frequency	60 Hz
Current	40.5/20.2 A	Power Factor	74.5
Duty	Continuous	Insulation Class	H
Design Code	A	KVA Code	K
Drive End Bearing Size	309	Opp Drive End Bearing Size	210
UL	Recognized	CSA	Y
CE	Y	IP Code	43
Number of Speeds	1		

Technical Specifications

Electrical Type	Squirrel Cage Inverter Duty	Starting Method	Inverter Only
Poles	4	Rotation	Reversible
Resistance Main	.44 Ohms	Mounting	Rigid Base
Motor Orientation	Horizontal	Drive End Bearing	Ball
Opp Drive End Bearing	Ball	Frame Material	Cast Iron
Shaft Type	T	Assembly/Box Mounting	F3
Outline Drawing	B-SS203631-1050	Connection Drawing	A-EE7308T

This is an uncontrolled document once printed or downloaded and is subject to change without notice. Date Created:09/07/2024

B-SS203631



- NOTES:
 1. CONDUIT BOX CAN BE ROTATED IN 90° STEPS.
 2. NAMEPLATE TO BE READ FROM CONDUIT MOUNTING SIDE OF MOTOR.
 3. MOTOR HAS F2 CAPABILITY.

DASH							FRAME							C							AG							B							2F							BS							REV		DATE		CHANGE		NAME		PART NAME		DRAWG NO			
1050							254TC							24.37							20.62							10.25							8.25							8.00							I		02-27-2001		NEW DRAWING		MU36052		DAH		OUTLINE - 'C' FACE		B-SS203631	
1225							256TC							26.12							22.37							12.00							10.00							9.75															250T FR. - TENC -HS35 TACH - STEEL C'BOX					
																												SHOP BOOK							PURCHASED							DISTRIBUTION - WA - LB - WP - LM - BR							CADD FILE NO.							SS203631						

MARATHON ELECTRIC
 WAUSAU, WISCONSIN 54401

HIGH VOLTAGE



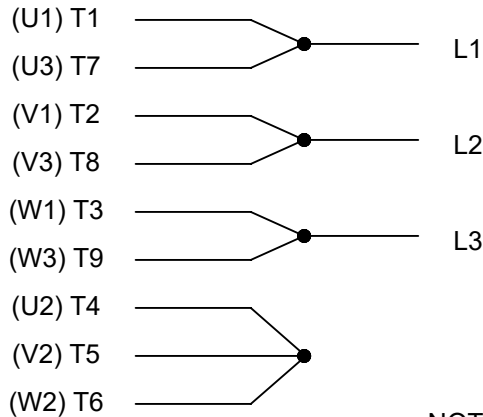
**THREE PHASE
DUAL VOLTAGE MOTOR**

THERMO-PROTECTORS
CONNECTED IN SERIES



**NOTE FOR FACTORY USE ONLY:
TO SURGE TEST FOR COMMON CONNECT:
HIGH VOLT: CONNECT P1 TO T1
THEN P2 TO L1
LOW VOLT: CONNECT P1 TO T1 & T7,
THEN P2 TO L1**

LOW VOLTAGE



VIEW OF TERMINAL END

NOTE: LEAD'S COLOR CAN BE YELLOW OR WHITE FOR MT2 PLANT

DRAWING REVISION T	REVISION BY ZR	DATE 01-14-2019		DRAWN BY SMC	Regal Beloit America, Inc.
ECO ECO-0159915	APPROVED BY DR	DATE 01-15-2019		DATE 05-13-1992	
ECO DESCRIPTION ADDED TERMINAL CONNECTION DIAGRAM				APPROVED BY TB	DESCRIPTION CONN DIAGRAM-INTERNAL 3 PHASE - DUAL VOLTAGE MOTOR
<small>COPYRIGHT REGAL BELOIT AMERICA, INC. ALL RIGHTS RESERVED. PROPRIETARY AND CONFIDENTIAL INFORMATION - THIS DOCUMENT IS THE PROPERTY OF REGAL BELOIT AMERICA, INC. ("OWNER") AND CONTAINS OWNER'S PROPRIETARY INFORMATION. ANY PERSON, CORPORATION OR OTHER FIRM RECEIVING IT IS DEEMED, BY RECEIVING IT, TO AGREE THAT IT, AND/OR ANY PART OF IT, SHALL NOT BE DISCLOSED TO ANY PERSON, CORPORATION OR OTHER ENTITY, DUPLICATED, AND/OR USED, EXCEPT AS EXPRESSLY APPROVED IN WRITING IN ADVANCE BY OWNER. THIS DOCUMENT SHALL BE RETURNED TO OWNER UPON REQUEST. IT MAY BE SUBJECT TO CERTAIN RESTRICTIONS UNDER APPLICABLE EXPORT CONTROL LAWS AND REGULATIONS.</small>				DATE 05-13-1992	MATERIAL
			REFERENCE EE7308/EE7300	SIZE A	DRAWING NUMBER EE7308T