

# PRODUCT INFORMATION PACKET

Model No: 254THFNA18547  
Catalog No: 254THFNA18547  
15,1800,TEBC-AXIAL,254T,3/60/460

Regal and are trademarks of Regal Rexnord Corporation or one of its affiliated companies.  
©2022 Regal Rexnord Corporation, All Rights Reserved. MC017097E



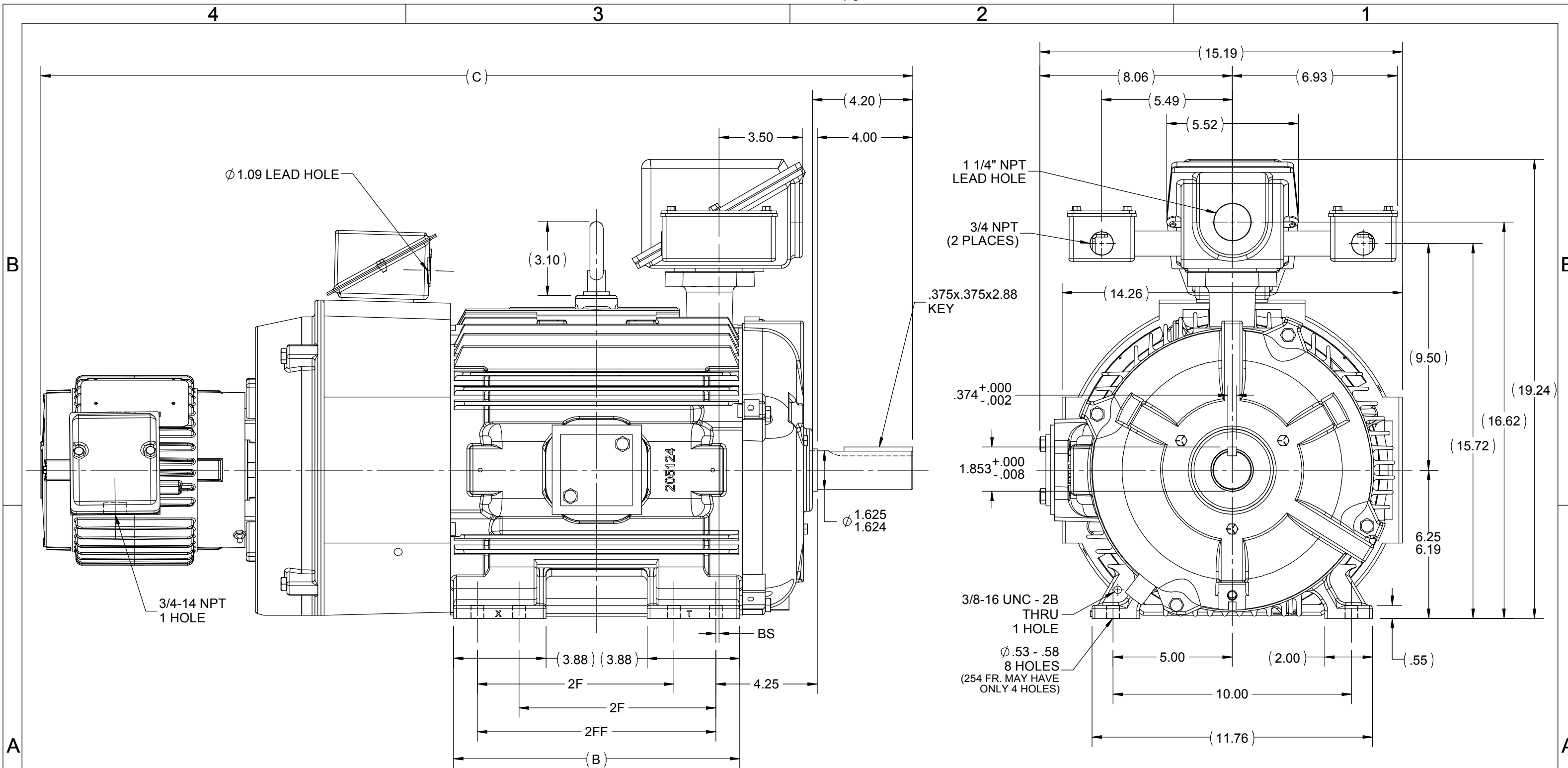
### Nameplate Specifications

Output HP	15 Hp	Output KW	11.2 kW
Frequency	60 Hz	Voltage	460 V
Current	18.5 A	Speed	1765 rpm
Service Factor	1.15	Phase	3
Efficiency	90.2 %	Power Factor	83.5
Duty	Continuous	Insulation Class	F
Design Code	INV	KVA Code	G
Frame	254T	Enclosure	Totally Enclosed Blower cooled - Axial
Thermal Protection	No Protection	Ambient Temperature	45 °C
Drive End Bearing Size	6309	Opp Drive End Bearing Size	6210
UL	Recognized	CSA	Y
CE	Y	IP Code	56
Number of Speeds	1		

### Technical Specifications

Electrical Type	Squirrel Cage Inverter Duty	Starting Method	Inverter Only
Poles	4	Rotation	Reversible
Resistance Main	.69 Ohms	Mounting	Rigid Base
Motor Orientation	Horizontal	Drive End Bearing	Ball
Opp Drive End Bearing	Ball	Frame Material	Cast Iron
Shaft Type	T	Assembly/Box Mounting	F3
Inverter Load	CONSTANT 2000:1		
Outline Drawing	SS208585-1225	Connection Drawing	EE7300AK

This is an uncontrolled document once printed or downloaded and is subject to change without notice. Date Created:09/02/2022



- NOTES:  
 1. CONDUIT BOX CAN BE ROTATED ON ITS AXIS.  
 2. CONDUIT BOX CAN BE MOUNTED ON OPPOSITE SIDE BY REMOVING BRACKETS AND TURNING FRAME 180°.  
 3. NAMEPLATE TO BE READ FROM CONDUIT BOX SIDE OF MOTOR.

DASH	FRAME	B	C	2F	2FF	BS
1050	254T	10.25	34.80	8.25	---	4.12
1225	254/256T	12.00	36.55	8.25	10.00	5.00

DRAWING REVISION A	REVISION BY DS	DATE 11/11/2019
ECO ECO-0174344	APPROVED BY GM	DATE 11/11/2019
ECO DESCRIPTION <b>NEW OUTLINE</b>		
<small>COPYRIGHT REGAL BELOIT AMERICA, INC. ALL RIGHTS RESERVED. PROPRIETARY AND CONFIDENTIAL INFORMATION - THIS DOCUMENT IS THE PROPERTY OF REGAL BELOIT AMERICA, INC. ("OWNER") AND CONTAINS OWNER'S PROPRIETARY INFORMATION. ANY PERSON, CORPORATION OR OTHER FIRM RECEIVING IT IS DEEMED, BY RECEIVING IT, TO AGREE THAT IT, AND/OR ANY PART OF IT, SHALL NOT BE DISCLOSED TO ANY PERSON, CORPORATION OR OTHER ENTITY, DUPLICATED, AND/OR USED, EXCEPT AS EXPRESSLY APPROVED IN WRITING IN ADVANCE BY OWNER. THIS DOCUMENT SHALL BE RETURNED TO OWNER UPON REQUEST. IT MAY BE SUBJECT TO CERTAIN RESTRICTIONS UNDER APPLICABLE EXPORT CONTROL LAWS AND REGULATIONS.</small>		

TOLERANCES UNLESS OTHERWISE SPECIFIED:

DEC.	INCH	mm	ANGLE
.X	$\pm 0.1$	[ $\pm 2.5$ ]	$\pm 7' 30"$
.XX	$\pm 0.03$	[ $\pm 0.76$ ]	
.XXX	$\pm 0.005$	[ $\pm 0.127$ ]	
.XXXX	$\pm 0.0005$	[ $\pm 0.0127$ ]	

REMOVE BURRS & BREAK SHARP EDGES: .003/.015 [.076/.381] X 45°  
 CORNER FILLETS: R.02 [.51]  
 MACHINED SURFACES: 200 INCH/mm 5.1

mm SHOWN IN [BRACKETS]

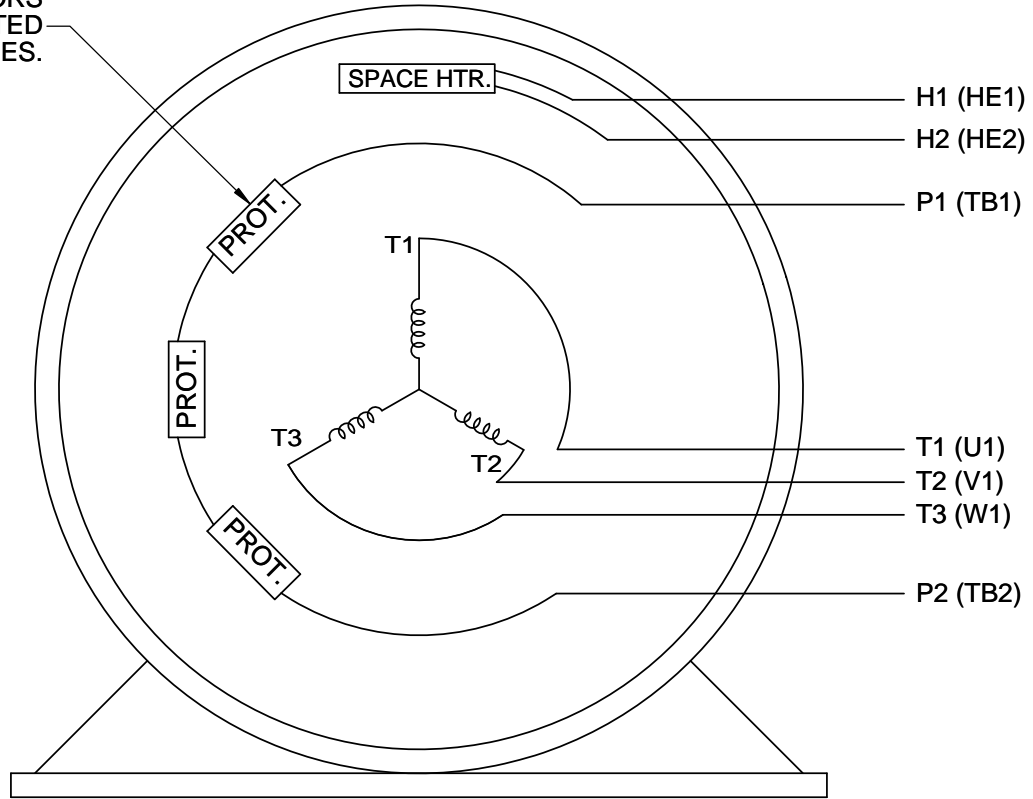
DRAWN BY ZR
DATE 07-10-2019
APPROVED BY GM
DATE 10/1/2019
REFERENCE
THIRD ANGLE PROJECTION

<b>REGAL</b> ™ Regal Beloit America, Inc.	
DESCRIPTION <b>OUTLINE</b> 250T FR. - TEBC - INTERNAL ENCODER	
MATERIAL	PROCESS/FINISH
SIZE B	DRAWING NUMBER <b>SS208585</b>
SHEET 1 OF 1	

TO REVERSE ROTATION:  
INTERCHANGE ANY TWO  
LINE LEAD CONNECTIONS.

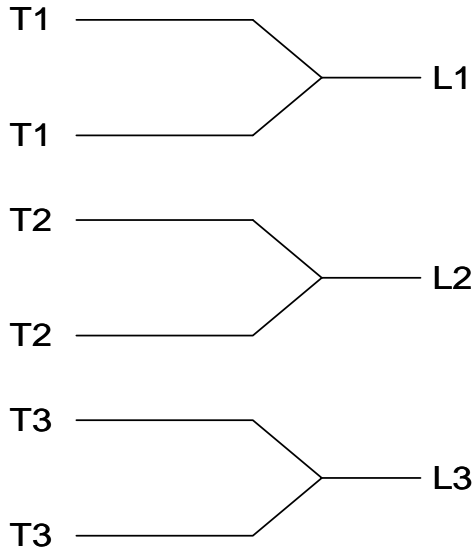
P1 AND P2 PROTECTORS  
TO VOLTAGE CONTROL

PROTECTORS  
CONNECTED  
IN SERIES.


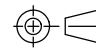


VIEW OF TERMINAL END

IF MOTOR OR GENERATOR  
HAS 6 LEADS



A-9806 DECAL

DRAWING REVISION J	REVISION BY J. OTTO	DATE 04-13-2017	TOLERANCES UNLESS OTHERWISE SPECIFIED:		DRAWN BY MJD	 Regal Beloit America, Inc.
ECO ECO-0121568	APPROVED BY T. VUE	DATE 04-18-2017	DEC.	INCH	mm	
ECO DESCRIPTION ADDED IEC NOTATIONS			.X	±0.1	[±2.5]	±7' 30"
COPYRIGHT REGAL BELOIT AMERICA, INC. ALL RIGHTS RESERVED. PROPRIETARY AND CONFIDENTIAL INFORMATION - THIS DOCUMENT IS THE PROPERTY OF REGAL BELOIT AMERICA, INC. ('OWNER') AND CONTAINS OWNER'S PROPRIETARY INFORMATION. ANY PERSON, CORPORATION OR OTHER FIRM RECEIVING IT IS DEEMED, BY RECEIVING IT, TO AGREE THAT IT, AND/OR ANY PART OF IT, SHALL NOT BE DISCLOSED TO ANY PERSON, CORPORATION OR OTHER ENTITY, DUPLICATED, AND/OR USED, EXCEPT AS EXPRESSLY APPROVED IN WRITING IN ADVANCE BY OWNER. THIS DOCUMENT SHALL BE RETURNED TO OWNER UPON REQUEST. IT MAY BE SUBJECT TO CERTAIN RESTRICTIONS UNDER APPLICABLE EXPORT CONTROL LAWS AND REGULATIONS.			.XX	±0.02	[±0.51]	
			.XXX	±0.005	[±0.127]	
			.XXXX	±0.0005	[±0.0127]	
			REMOVE BURRS & BREAK SHARP EDGES: .003/.015 [.076/.381] CORNER FILLETS: .02 [.51] MACHINED SURFACES: 200 INCH 5.1/mm			
			mm SHOWN IN [BRACKETS]			
			THIRD ANGLE PROJECTION			SIZE A
			REFERENCE		MATERIAL	PROCESS/FINISH
			DATE 07-06-1998		DESCRIPTION <b>CONN DIAGRAM-INTERNAL</b> SINGLE VOLT-3Ø MOTOR	
			DRAWING NUMBER EE7300AK		SHEET 1 OF 1	