

PRODUCT INFORMATION PACKET

Model No: 254THFNA16543
Catalog No: 254THFNA16543
15,1800,TEFC,254T,3/60/460

Regal and are trademarks of Regal Rexnord Corporation or one of its affiliated companies.
©2022 Regal Rexnord Corporation, All Rights Reserved. MC017097E



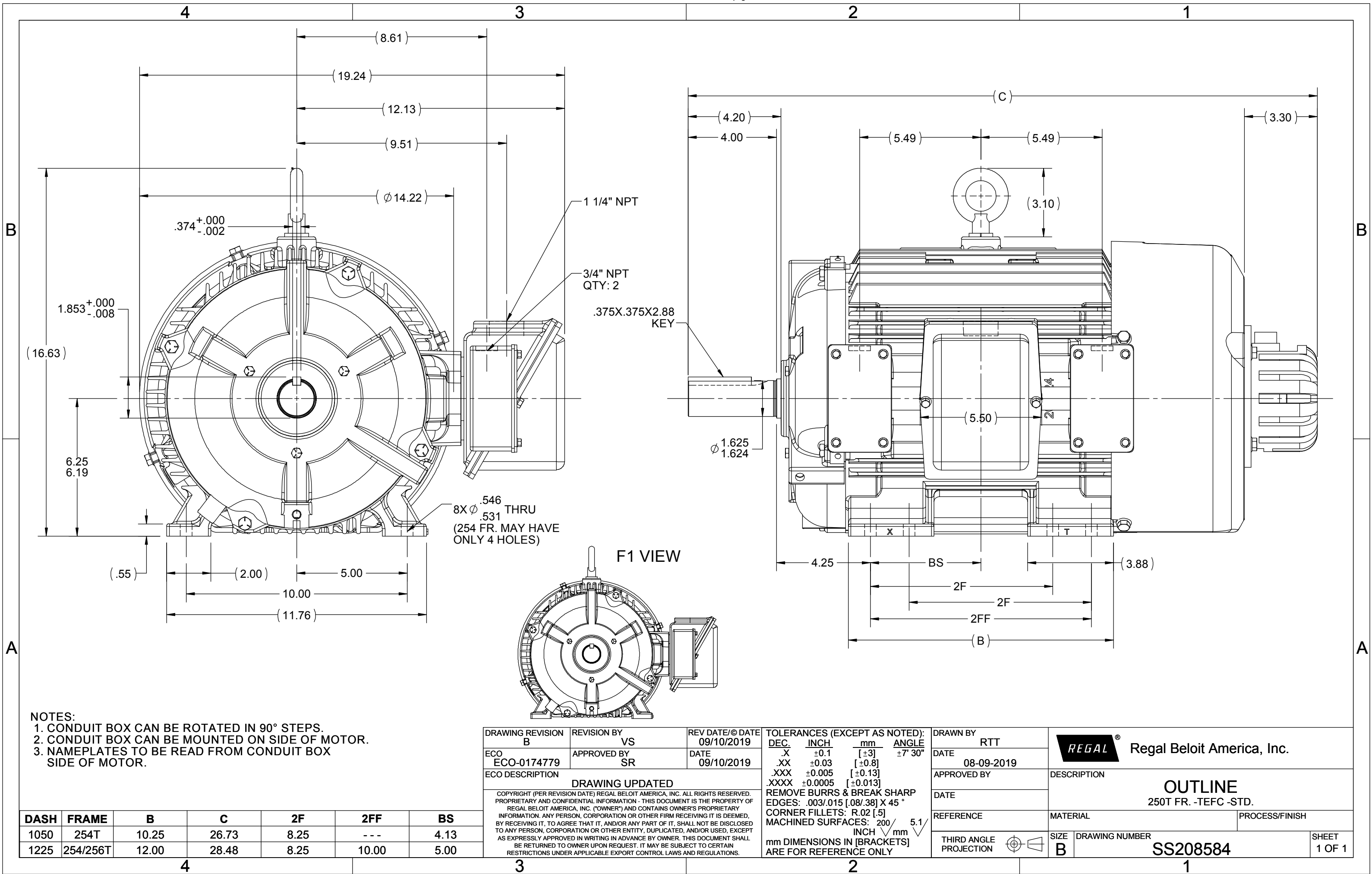
Nameplate Specifications

Output HP	15 Hp	Output KW	11.2 kW
Frequency	60 Hz	Voltage	460 V
Current	20.2 A	Speed	1772 rpm
Service Factor	1.15	Phase	3
Efficiency	92.4 %	Power Factor	74.5
Duty	Continuous	Insulation Class	F
Design Code	INV	KVA Code	K
Frame	254T	Enclosure	Totally Enclosed Fan Cooled
Thermal Protection	No Protection	Ambient Temperature	45 °C
Drive End Bearing Size	6309	Opp Drive End Bearing Size	6210
UL	Recognized	CSA	Y
CE	Y	IP Code	56
Number of Speeds	1		

Technical Specifications

Electrical Type	Squirrel Cage Inverter Duty	Starting Method	Inverter Only
Poles	4	Rotation	Reversible
Resistance Main	.44 Ohms	Mounting	Rigid Base
Motor Orientation	Horizontal	Drive End Bearing	Ball
Opp Drive End Bearing	Ball	Frame Material	Cast Iron
Shaft Type	T	Assembly/Box Mounting	F2/F1 CAPABLE
Inverter Load	CONSTANT 2000:1		
Outline Drawing	SS208584-1225	Connection Drawing	EE7300AK

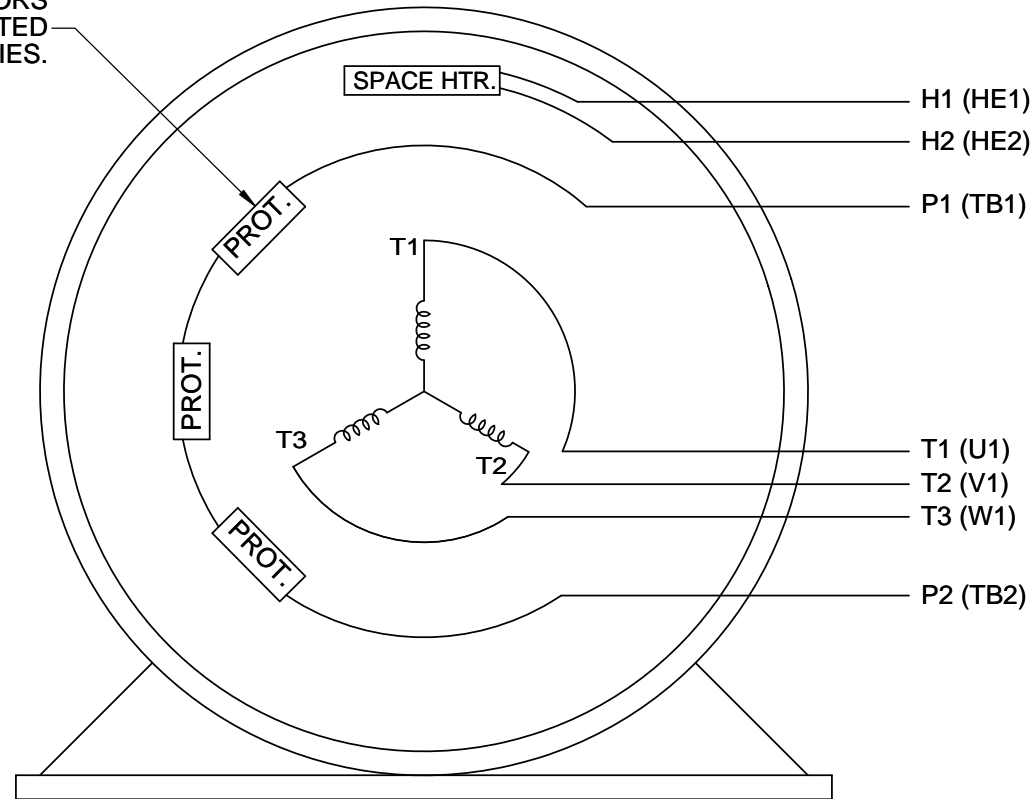
This is an uncontrolled document once printed or downloaded and is subject to change without notice. Date Created:09/02/2022



P1 AND P2 PROTECTORS TO VOLTAGE CONTROL

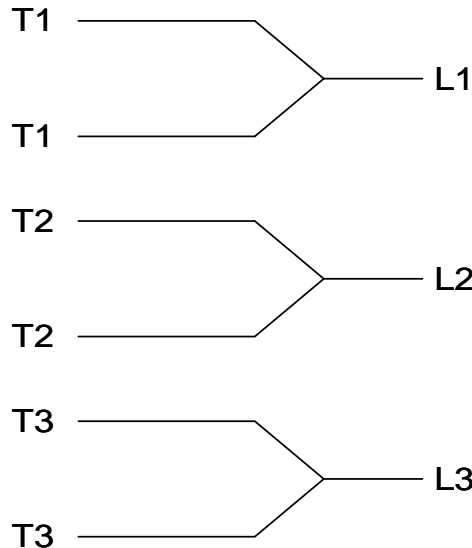
TO REVERSE ROTATION:
INTERCHANGE ANY TWO
LINE LEAD CONNECTIONS.

PROTECTORS
CONNECTED
IN SERIES.

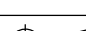


VIEW OF TERMINAL END

IF MOTOR OR GENERATOR
HAS 6 LEADS



A-9806 DECAL

DRAWING REVISION J	REVISION BY J. OTTO	DATE 04-13-2017	TOLERANCES UNLESS OTHERWISE SPECIFIED: <div><div>DEC.</div><div>INCH</div><div>mm</div><div>ANGLE</div></div> <div><div>.X</div><div>±0.1</div><div>[±2.5]</div><div>±7° 30"</div></div> <div><div>.XX</div><div>±0.02</div><div>[±0.51]</div></div> <div><div>XXX</div><div>±0.005</div><div>[±0.127]</div></div> <div><div>.XXXX</div><div>±0.0005</div><div>[±0.0127]</div></div> <div>REMOVE BURRS & BREAK SHARP EDGES: .003/.015 [.076/.381] CORNER FILLETS: .02 [.51] MACHINED SURFACES: 200 INCH 5.1 mm mm SHOWN IN [BRACKETS]</div>				DRAWN BY MJD	<div><div>REGAL™</div><div>Regal Beloit America, Inc.</div></div>	
ECO ECO-0121568	APPROVED BY T. VUE	DATE 04-18-2017					DATE 06-24-2014		
ECO DESCRIPTION ADDED IEC NOTATIONS			DESCRIPTION CONN DIAGRAM-INTERNAL SINGLE VOLT-3Ø MOTOR						
<div><div>COPYRIGHT REGAL BELOIT AMERICA, INC. ALL RIGHTS RESERVED. PROPRIETARY AND CONFIDENTIAL INFORMATION - THIS DOCUMENT IS THE PROPERTY OF REGAL BELOIT AMERICA, INC. ("OWNER") AND CONTAINS OWNER'S PROPRIETARY INFORMATION. ANY PERSON, CORPORATION OR OTHER FIRM RECEIVING IT IS DEEMED, BY RECEIVING IT, TO AGREE THAT IT, AND/OR ANY PART OF IT, SHALL NOT BE DISCLOSED TO ANY PERSON, CORPORATION OR OTHER ENTITY, DUPLICATED, AND/OR USED, EXCEPT AS EXPRESSLY APPROVED IN WRITING IN ADVANCE BY OWNER. THIS DOCUMENT SHALL BE RETURNED TO OWNER UPON REQUEST. IT MAY BE SUBJECT TO CERTAIN RESTRICTIONS UNDER APPLICABLE EXPORT CONTROL LAWS AND REGULATIONS.</div></div>			APPROVED BY TB	MATERIAL		PROCESS/FINISH			
			DATE 07-06-1998						
						REFERENCE			
			THIRD ANGLE PROJECTION		SIZE A	DRAWING NUMBER EE7300AK	SHEET 1 OF 1		