

PRODUCT INFORMATION PACKET



Model No: 254THEN17048
Catalog No: 254THEN17048
10,1800,EPNV,254T,3/60/230/460

Regal and Marathon are trademarks of Regal Rexnord Corporation or one of its affiliated companies.
©2024 Regal Rexnord Corporation, All Rights Reserved. MC017097E



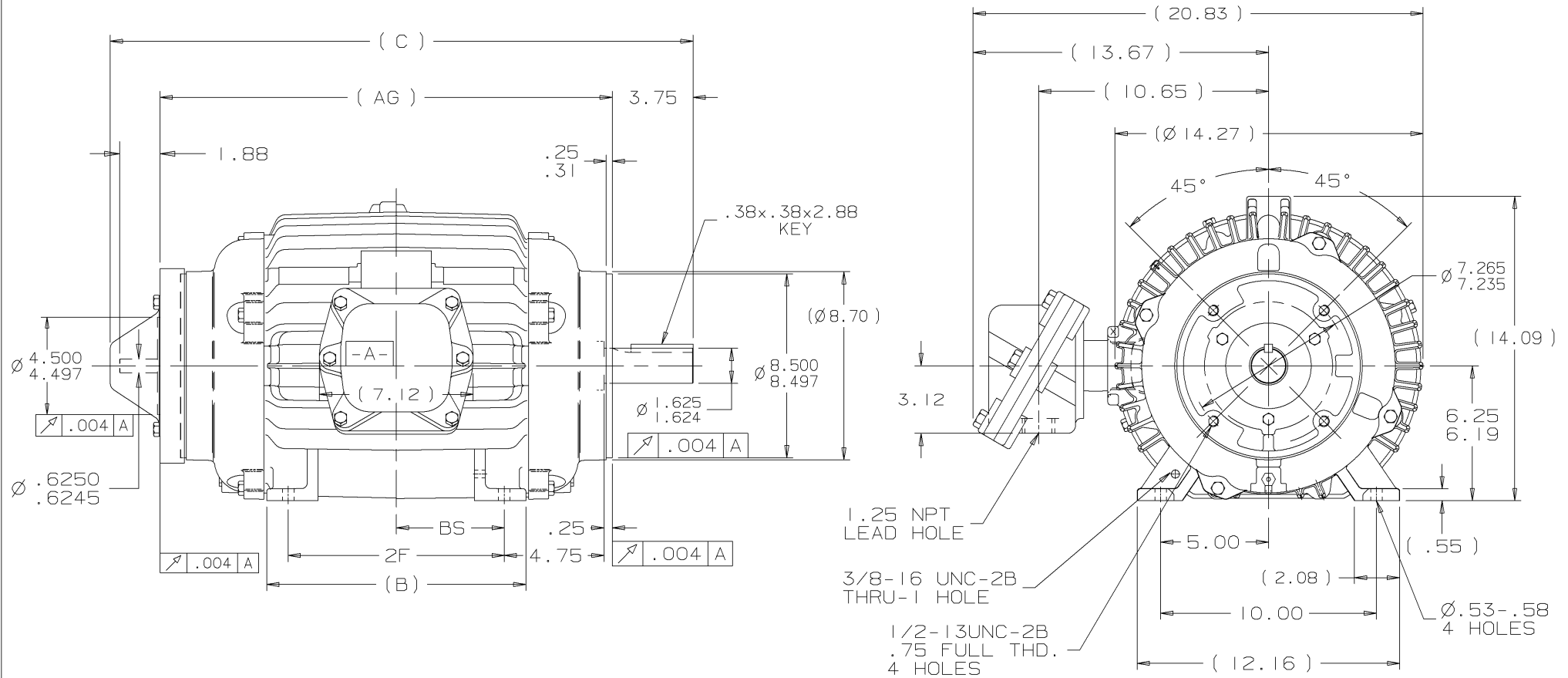
Nameplate Specifications

| | | | |
|------------------------|-------------|----------------------------|--|
| Phase | 3 | Output HP | 10 Hp |
| Output KW | 7.5 kW | Voltage | 230/460 V |
| Speed | 1775 rpm | Service Factor | 1 |
| Frame | 254TC | Enclosure | Explosion Proof Non Ventilated |
| Thermal Protection | Thermostat | Efficiency | 91.7 % |
| Ambient Temperature | 40 °C | Frequency | 60 Hz |
| Current | 27.0/13.5 A | Power Factor | 75 |
| Duty | Continuous | Insulation Class | F |
| Design Code | A | KVA Code | J |
| Drive End Bearing Size | 309 | Opp Drive End Bearing Size | 309 |
| UL | Recognized | CSA | N |
| CE | N | IP Code | 54 |
| Number of Speeds | 1 | Hazardous Location | EXP PROOF CL I GR C&D CL II GR F&G T3C |

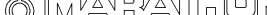
Technical Specifications

| | | | |
|-----------------------|-----------------------------|-----------------------|---------------|
| Electrical Type | Squirrel Cage Inverter Duty | Starting Method | Inverter Only |
| Poles | 4 | Rotation | Reversible |
| Resistance Main | .675 Ohms | Mounting | Rigid Base |
| Motor Orientation | Horizontal | Drive End Bearing | Ball |
| Opp Drive End Bearing | Ball | Frame Material | Cast Iron |
| Shaft Type | T | Assembly/Box Mounting | F1/F2 CAPABLE |
| Outline Drawing | B-SS203643-1050 | Connection Drawing | A-EE7308T |

This is an uncontrolled document once printed or downloaded and is subject to change without notice. Date Created:09/07/2024



1. BOX CAN ONLY BE ROTATED CLOCKWISE UP TO 270° FROM ITS ORIGINAL POSITION.
2. NAMEPLATE TO BE READ FROM C'BOX SIDE OF MOTOR.

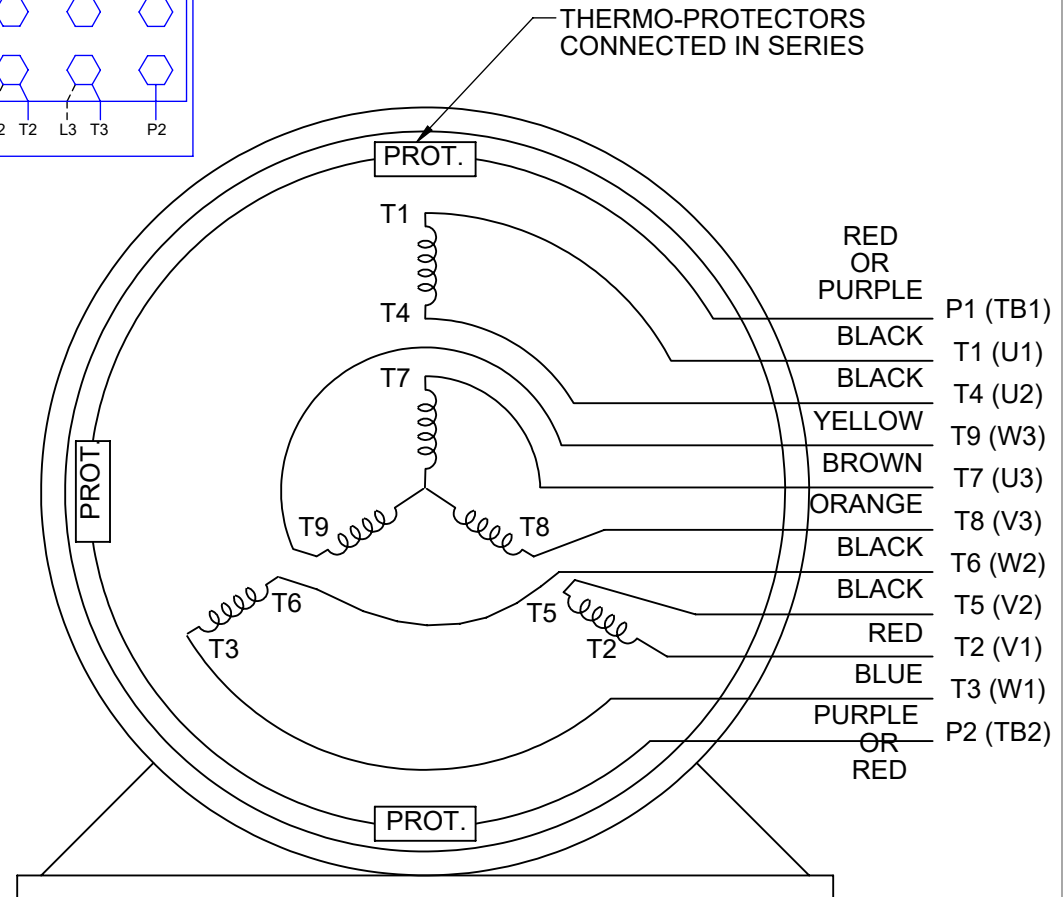
| DASH | FRAME | B | C | AG | 2F | BS | | | | | ✓ MAX. SURFACE ROUGHNESS UNLESS NOTED OTHERWISE | UNLESS OTHERWISE SPECIFIED DIMENSIONS ARE IN INCHES TOL. ON XX± .03 XXX± .005 XXXX± .0005 ANGLES± 7°30" | | | | |
|------|-------|-------|-------|-------|-------|------|-----|------------|--|-----|---|---|---------------------------------------|------------|-----------------------|----------|
| 1050 | 254TC | 10.25 | 24.25 | 21.07 | 8.25 | 4.12 | 2 | 04-16-2001 | ADDED DIA & TOLS TO ADAPTER MU36505 | DAH | MATL SPEC |  WAUSAU, WISCONSIN 54401 | DRAWN BY DAH | 04-06-2001 | | |
| 1225 | 256TC | 12.00 | 26.00 | 22.82 | 10.00 | 5.00 | | | | DAH | FINISH | | CHKD BY ML | 04-11-2001 | | |
| | | | | | | | 1 | 04-11-2001 | NEW DRAWING MU36505 | DAH | | | APPRO BY BW | 04-11-2001 | | |
| | | | | | | | REV | DATE | CHANGE | | NAME | PART NAME OUTLINE - PROV. FOR X25 TACHOMETER 250T FR. - EXP. PR. - TGN - C'FACE | | | DRWG NO B-SS203643 | |
| | | | | | | | | | SHOP BOOK | | PURCHASED | | DISTRIBUTION - WA - LB - WP - LM - BR | | CADD FILE NO. | SS203643 |

HIGH VOLTAGE



NOTE FOR FACTORY USE ONLY:
 TO SURGE TEST FOR COMMON CONNECT:
 HIGH VOLT: CONNECT P1 TO T1
 THEN P2 TO L1
 LOW VOLT: CONNECT P1 TO T1 & T7,
 THEN P2 TO L1

LOW VOLTAGE

THREE PHASE
DUAL VOLTAGE MOTOR

VIEW OF TERMINAL END

NOTE: LEAD'S COLOR CAN BE YELLOW OR WHITE FOR MT2 PLANT

| | | |
|-----------------------|-------------------|--------------------|
| DRAWING REVISION T | REVISION BY ZR | DATE 01-14-2019 |
| ECO ECO-0159915 | APPROVED BY DR | DATE 01-15-2019 |

ECO DESCRIPTION
ADDED TERMINAL CONNECTION DIAGRAM

COPYRIGHT REGAL BELOIT AMERICA, INC. ALL RIGHTS RESERVED.
 PROPRIETARY AND CONFIDENTIAL INFORMATION - THIS DOCUMENT IS THE PROPERTY OF
 REGAL BELOIT AMERICA, INC. ("OWNER") AND CONTAINS OWNER'S PROPRIETARY
 INFORMATION. ANY PERSON, CORPORATION OR OTHER FIRM RECEIVING IT IS DEEMED,
 BY RECEIVING IT, TO AGREE THAT IT, AND/OR ANY PART OF IT, SHALL NOT BE DISCLOSED
 TO ANY PERSON, CORPORATION OR OTHER ENTITY, DUPLICATED, AND/OR USED, EXCEPT
 AS EXPRESSLY APPROVED IN WRITING IN ADVANCE BY OWNER. THIS DOCUMENT SHALL
 BE RETURNED TO OWNER UPON REQUEST. IT MAY BE SUBJECT TO CERTAIN
 RESTRICTIONS UNDER APPLICABLE EXPORT CONTROL LAWS AND REGULATIONS.

| | |
|----------------------------|---------------------------|
| DRAWN BY SMC | DATE 05-13-1992 |
| APPROVED BY TB | DATE 05-13-1992 |
| REFERENCE EE7308/EE7300 | THIRD ANGLE PROJECTION |



Regal Beloit America, Inc.

DESCRIPTION

CONN DIAGRAM-INTERNAL
 3 PHASE - DUAL VOLTAGE MOTOR

MATERIAL

PROCESS/FINISH

SIZE
A

DRAWING NUMBER

EE7308T

SHEET
1 OF 1