

PRODUCT INFORMATION PACKET

Model No: 215TTWWD16007

Catalog No: N214A

PowerWash™ XT Wash Down Duty™ Washdown Pump Motor, 15 & 10 HP, 3 Ph, 60 & 50 Hz,
230/460 & 190/380 V, 3600 & 3000 RPM, 215JM Frame, TEFC



Regal and Marathon are trademarks of Regal Rexnord Corporation or one of its affiliated companies.

©2023 Regal Rexnord Corporation, All Rights Reserved. MC017097E

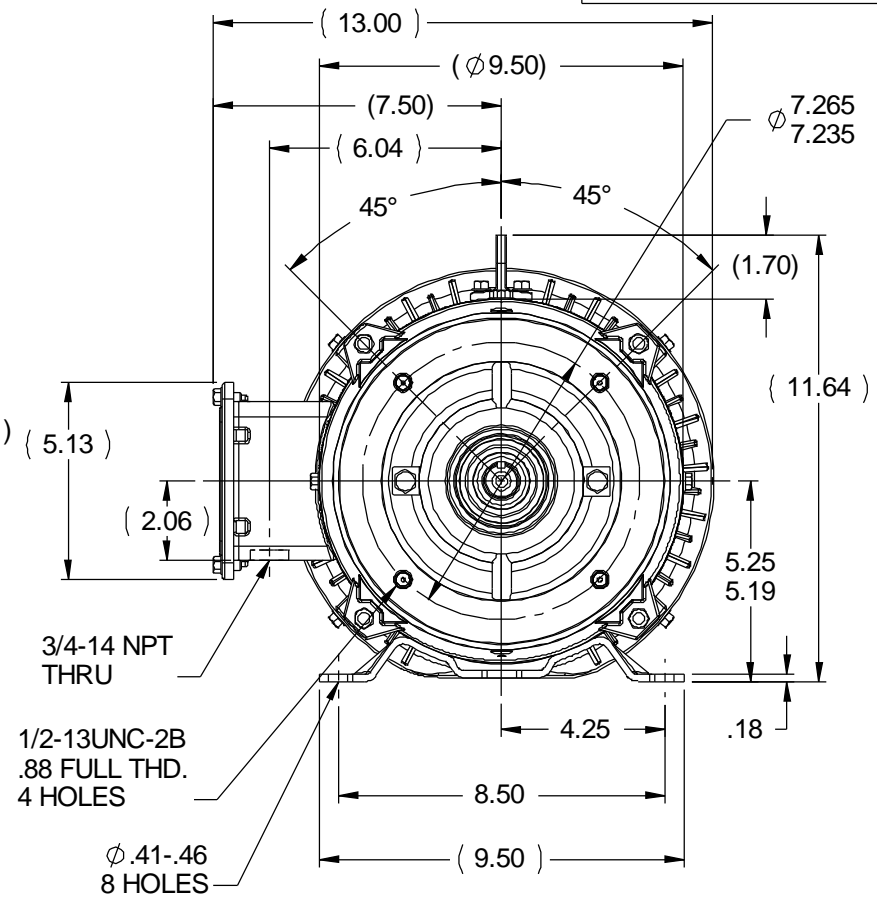
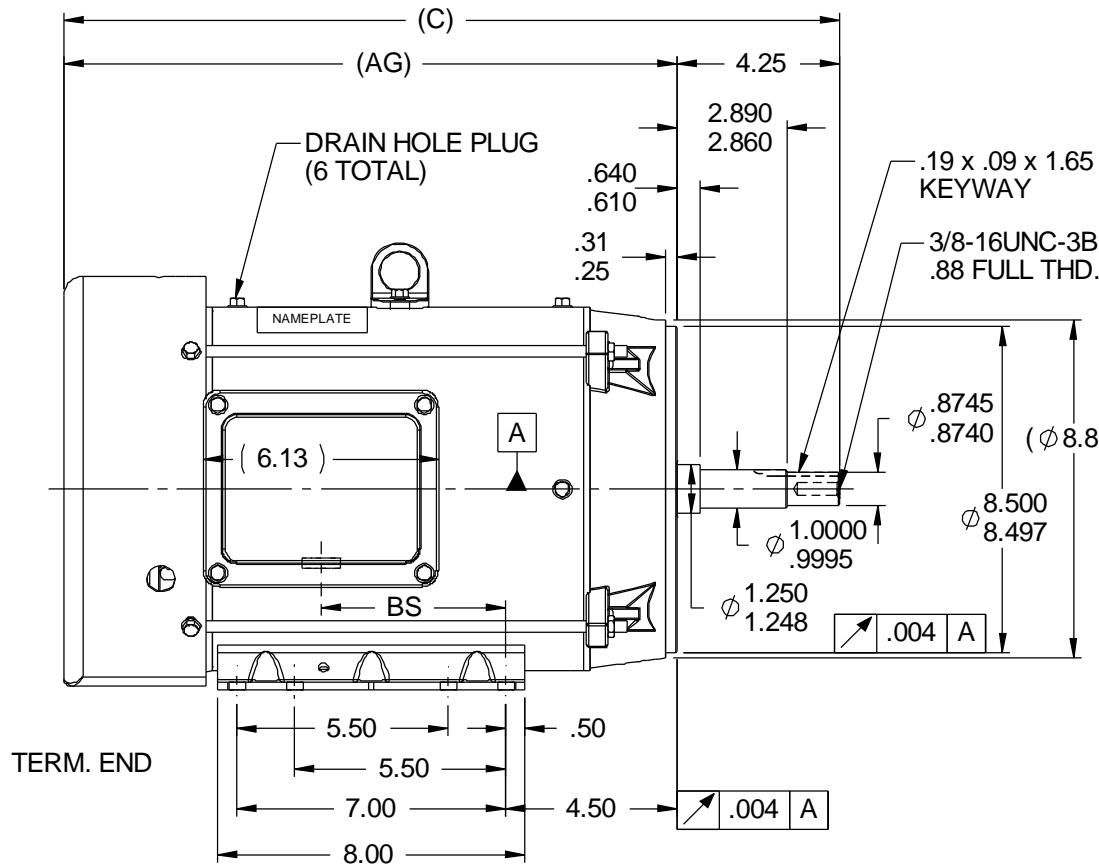
Nameplate Specifications

Phase	3	Output HP	15 & 10 Hp
Output KW	11.2 & 7.5 kW	Voltage	230/460 & 190/380 V
Speed	3495 & 2930 rpm	Service Factor	1.15 & 1.0
Frame	215JM	Enclosure	Totally Enclosed Fan Cooled
Thermal Protection	No Protection	Efficiency	91 & 91 %
Ambient Temperature	40 °C	Frequency	60 & 50 Hz
Current	35/17.6 & 28.4/14.2 A	Power Factor	89
Duty	Continuous	Insulation Class	F
Design Code	B	KVA Code	G
Drive End Bearing Size	6309	Opp Drive End Bearing Size	6206
UL	Recognized	CSA	Y
CE	Y	IP Code	55
Number of Speeds	1		

Technical Specifications

Electrical Type	Squirrel Cage Inverter Rated	Starting Method	Line Or Inverter
Poles	2	Rotation	Reversible
Resistance Main	.7386 Ohms	Mounting	Rigid Base
Motor Orientation	Horizontal	Drive End Bearing	Ball
Opp Drive End Bearing	Ball	Frame Material	Rolled Steel
Shaft Type	JM	Overall Length	21.71 in
Frame Length	11.15 in	Shaft Diameter	0.875 in
Shaft Extension	4.25 in	Assembly/Box Mounting	F1/F2 CAPABLE
Inverter Load	VARIABLE 10:1		
Outline Drawing	SS88927-1115	Connection Drawing	005010.01

SS88927



DASH	FRAME	C	BS	AG
965	213JM	20.21	4.81	15.96
1115	213/15JM	21.71	6.31	17.46
1240	215JM	22.96	7.56	18.71

NOTES:
 1- NAMEPLATE TO BE READ FROM C'BOX SIDE OF MOTOR.
 2- DASH 965 TO BE READ FROM OPPOSITE SHAFT END.
 3- C'BOX CAN BE MOUNTED ON OPPOSITE SIDE BY REMOVING BRACKETS AND TURNING FRAME 180° (EXCEPT AS NOTED).

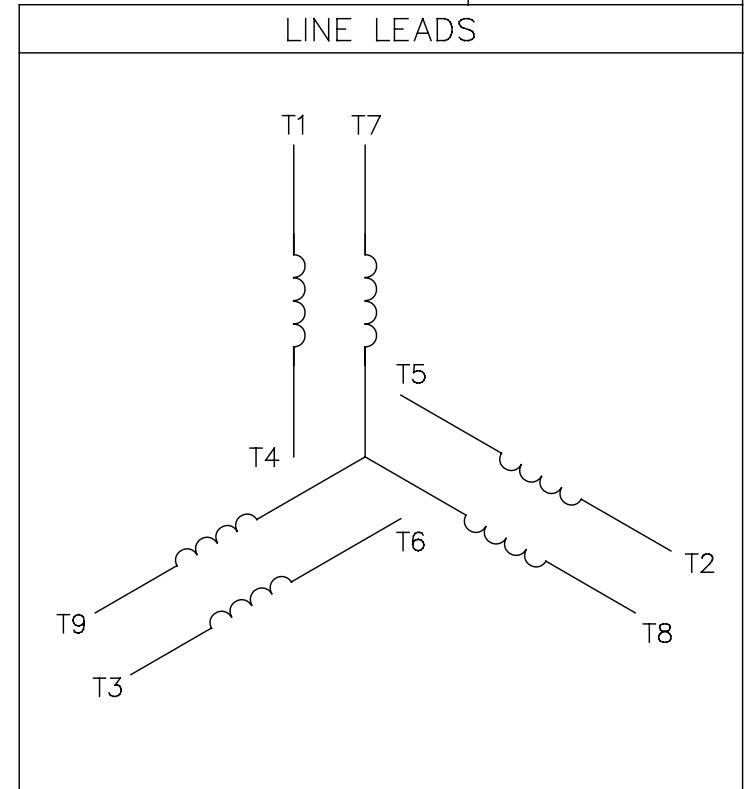
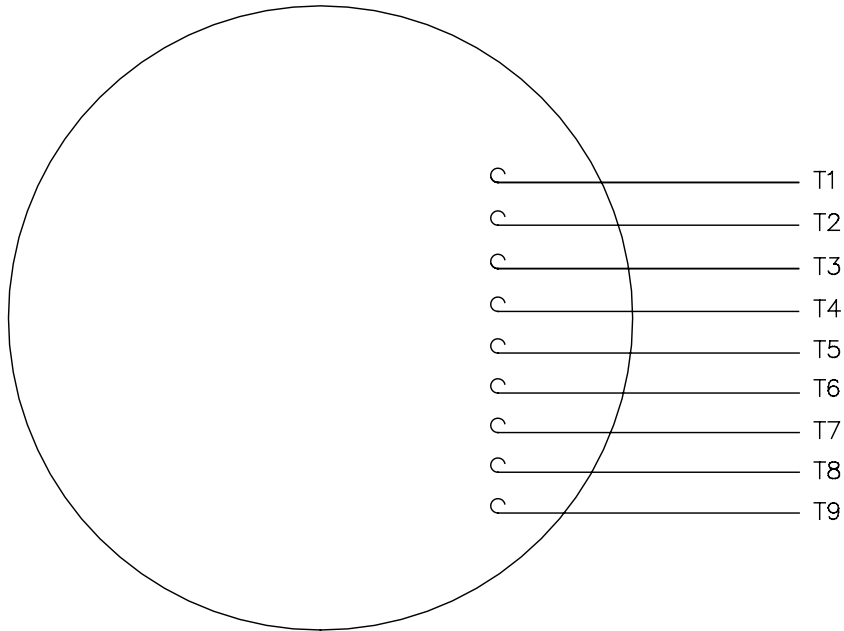
NO		REVISION	BY & DATE	CHK	ANG	TOLERANCES UNLESS SPECIFIED	 marathon® electric	DRAWN UD 08/21/13		
						DEC		INCHES	CHK SR 08/21/13	
						.X		±.1	APPR	
						.XX		±.03	SCALE 1:4	
						.XXX		±.005	REF	
						.XXX	±.005 <td colspan="2">TITLE OUTLINE - WASHDOWN</td>	TITLE OUTLINE - WASHDOWN		
						.XXXX	±.0005 <td colspan="2">210FR. -TEFC - C'FACE - 3 PHASE</td>	210FR. -TEFC - C'FACE - 3 PHASE		
						ANG	±1/2° <td colspan="2">MAT'L</td>	MAT'L		
							<td colspan="2">FINISH</td>	FINISH		
							<td>SIZE</td> <td>DRAWING NO</td>	SIZE	DRAWING NO	
							<td>A</td> <td>SS88927</td>	A	SS88927	
							<td></td> <td>REV</td>		REV	

THIS DRAWING IN DESIGN AND DETAIL IS OUR PROPERTY AND MUST NOT BE USED EXCEPT IN CONNECTION WITH OUR WORK. ALL RIGHTS OF DESIGN AND INVENTION ARE RESERVED. THIS IS AN ELECTRONICALLY GENERATED DOCUMENT - DO NOT SCALE THIS PRINT

RFP CAD FILE SIZE A
 DIST SS88927 DRAWING NO SS88927 REV

005010-01

VIEW FROM OUTSIDE OF MOTOR AT SWITCH END.



VOLTAGE	L1	L2	L3	JOIN & INSULATE
HIGH	T1	T2	T3	(T4,T7) (T5,T8) (T6,T9)
LOW	T1,T7	T2,T8	T3,T9	T4,T5,T6

				TOLERANCES UNLESS SPECIFIED		REGAL ™ Regal Beloit America, Inc.		DRAWN RDW 04/12/02				
				DEC.	INCHES			CHK				
				.X	±.1			APPD				
				.XX	±.01			SCALE 1=1				
				.XXX	±.005	TITLE		REF FIG.2-51				
A	UPDATED TO REGAL LOGO			SAJ	06/26/15	AJY	.XXXX	±.0005	MAT'L. DECAL - 004014	FMF		
NO.	REVISION			BY & DATE	CHK	ANG	±1/2"	FINISH	PREV			
THIS DRAWING IN DESIGN AND DETAIL IS OUR PROPERTY AND MUST NOT BE USED EXCEPT IN CONNECTION WITH OUR WORK ALL RIGHTS OF DESIGN AND INVENTION ARE RESERVED THIS IS AN ELECTRONICALLY GENERATED DOCUMENT - DO NOT SCALE THIS PRINT				RFP	04/12/02		CAD FILE	00501001		SIZE	DRAWING NO.	REV.
				DIST	BRF-NLV				A	005010-01		A



P.O. BOX 8003
WAUSAU, WI 54401-8003
PH. 715-675-3311

DATA VOLTS: 460

CERTIFICATION DATA SHEET

CUSTOMER: _____ CUSTOMER P.O. #: _____
 ORDER #: _____ REFERENCE MODEL #: 215TTWWD16007
 CONN. DIAGRAM: 005010.01 CAT #: N214A
 OUTLINE: SS88927-1115 CUSTOMER PART #: _____
 WINDING: K2132128 NONE 1 MOUNTING: F1/F2 CAPABLE
 SPEED: _____

TYPICAL MOTOR PERFORMANCE DATA

HP	KW	SYNC RPM	FL RPM	FRAME	ENCLOSURE	TYPE	KVA CODE	DESIGN		
15	11.2	3600	3495	215JM	TEFC	TFW	G	B		
PH	HZ	VOLTS	AMPS	START TYPE	DUTY	INSL	S.F.	AMB	ELEV.	
3	60/50	230/460#190/380	35/17.6&28.4/14.2	LINE OR INVERTER	CONT	F	1.15	40	3300	
F.L. EFF	91.0	3/4 LD EFF	90.7	1/2 LD EFF	90.6	GTD EFF	ELECT. TYPE			
F.L. PF	89.0	3/4 LD PF	86.3	1/2 LD PF	79.1	89.5	SQ CAGE INV RATED			
F.L. TORQUE	LR AMPS @ 460 V	L.R. TORQUE	B.D. TORQUE	F.L. RISE (°C)						
22.5 LB-FT	109	42.8 LB-FT 190%	61.8 LB-FT 275%	80						
@ 3 FT.	POWER	ROTOR WK ²	MAX. LOAD WK ²	SAFE STALL TIME	STARTS/HOUR	MOTOR WGT				
72 dBA	81 dBA	0.75 LB-FT ²	18 LB-FT ²	15 SEC.	2	128 LB.				
*** SUPPLEMENTAL INFORMATION ***										
DE BRACKET TYPE	ODE BRACKET TYPE	MOUNT TYPE	MOTOR ORIENTATION	SEVERE DUTY	HAZARDOUS LOCATION	DRIP COVER	SCREENS	PAINT		
C-FACE	STANDARD	RIGID	HORIZONTAL	NO	NONE	NO	NONE	HITE - LEESON (EPO)		
BEARINGS		GREASE	SHAFT TYPE	SPECIAL DE	SPECIAL ODE	SHAFT MATERIAL	FRAME MATERIAL			
DE	ODE	POLYREX EM	JM	NONE	NONE	303 STAINLESS (C-501)	ROLLED STEEL			
BALL	BALL									
6309	6206									
THERMOSTATS	PROTECTORS	WDG RTD's	BRG RTD's	THERMISTORS	CONTROL	SPACE HEATERS				
NONE	NOT	NONE	NONE	NONE	FALSE	NA				
R1 (ohms/ph)	R2 (ohms/ph)	X1 (ohms/ph)	X2 (ohms/ph)	Xm (ohms/ph)	VIBRATION (in/sec)	FLOAT				
0.397	0.295	1.334	1.249	45.171	0.150	ODE				
* N O T E S *					INVERTER TORQUE: VARIABLE 10:1 INV. HP SPEED RANGE: NONE					
					ENCODER: NONE NONE NONE NONE PPR					
					BRAKE: NONE NONE NONE NONE					
					FT-LB: NA VOLTAGE: NONE HZ:					
					UL: V-INS, CONST UL REC					
PREPARED BY: FAREEDA DUDEKULA DATE: 9/17/2018										

FORM: 3531 REV_4 2/27/06

Data Sheet

215TTWWD16007

Date: 12/10/2018
 Customer: _____
 Attention: _____
 Submitted by: FAREEDA DUDEKULA



Submittal

Data @ 460 V

Motor Load Data

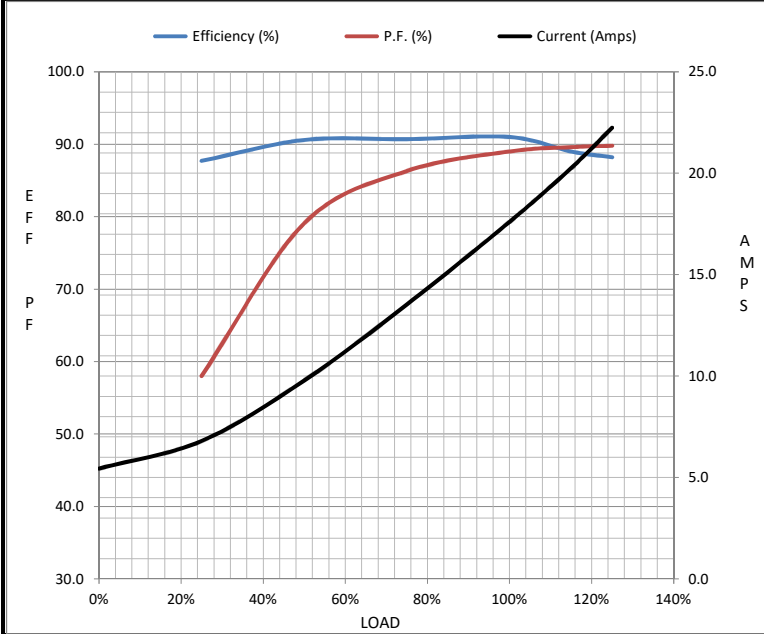
Load	0%	25%	50%	75%	100%	115%	125%	LR
Current (Amps)	5.4	6.8	9.8	13.5	17.6	20.3	22.2	109
Torque (ft-lb)	0.00	5.5	11.1	16.9	22.5	26.1	28.6	42.8
RPM	3600	3576	3552	3524	3495	3,475	3461	0
Efficiency (%)		87.7	90.6	90.7	91.0	89.0	88.2	
P.F. (%)	18.2	58.0	79.1	86.3	89.0	89.6	89.8	45.6

Motor Speed Data

	LR	Pull-Up	BD	Rated	Idle
Speed (RPM)	0	632	3120	3495	3600
Current (Amps)	109	111	70.5	17.6	5.4
Torque (ft-lb)	42.8	42.7	61.8	22.5	0.00

Information Block

HP	15.0			
Sync. RPM	3600			
Frame	215			
Enclosure	TEFC			
Construction	TFR			
Voltage	230/460#190/380 V			
Frequency	60 Hz			
Design	A			
LR Code letter	G			
Service Factor	1.15			
Temp Rise @ FL	80 °C			
Duty	CONT			
Ambient	40 °C			
Elevation	1,000 feet			
Rotor/Shaft wk ²	0.75 Lb-Ft ²			
Ref Wdg	K2132128 NONE			
Sound Pressure @ 1M	72 dBA			
VFD Rating	VARIABLE 10:1			
Outline Dwg	SS88927-1115			
Conn. Diag	005010.01			
Additional Specifications:				
0				
0				
EQUIV CKT (OHMS / PHASE)				
R1	R2	X1	X2	Xm
0.3970	0.2950	1.3340	1.2490	45.1710



Speed - Torque Curve

