

# PRODUCT INFORMATION PACKET

Model No: 215TTWWD16006

Catalog No: N664A

PowerWash™ XT Wash Down Duty™ General Purpose Motor, 15 & 10 HP, 3 Ph, 60 & 50 Hz,  
230/460 & 190/380 V, 3600 & 3000 RPM, 215TC Frame, TEFC



Regal and Marathon are trademarks of Regal Rexnord Corporation or one of its affiliated companies.

©2023 Regal Rexnord Corporation, All Rights Reserved. MC017097E



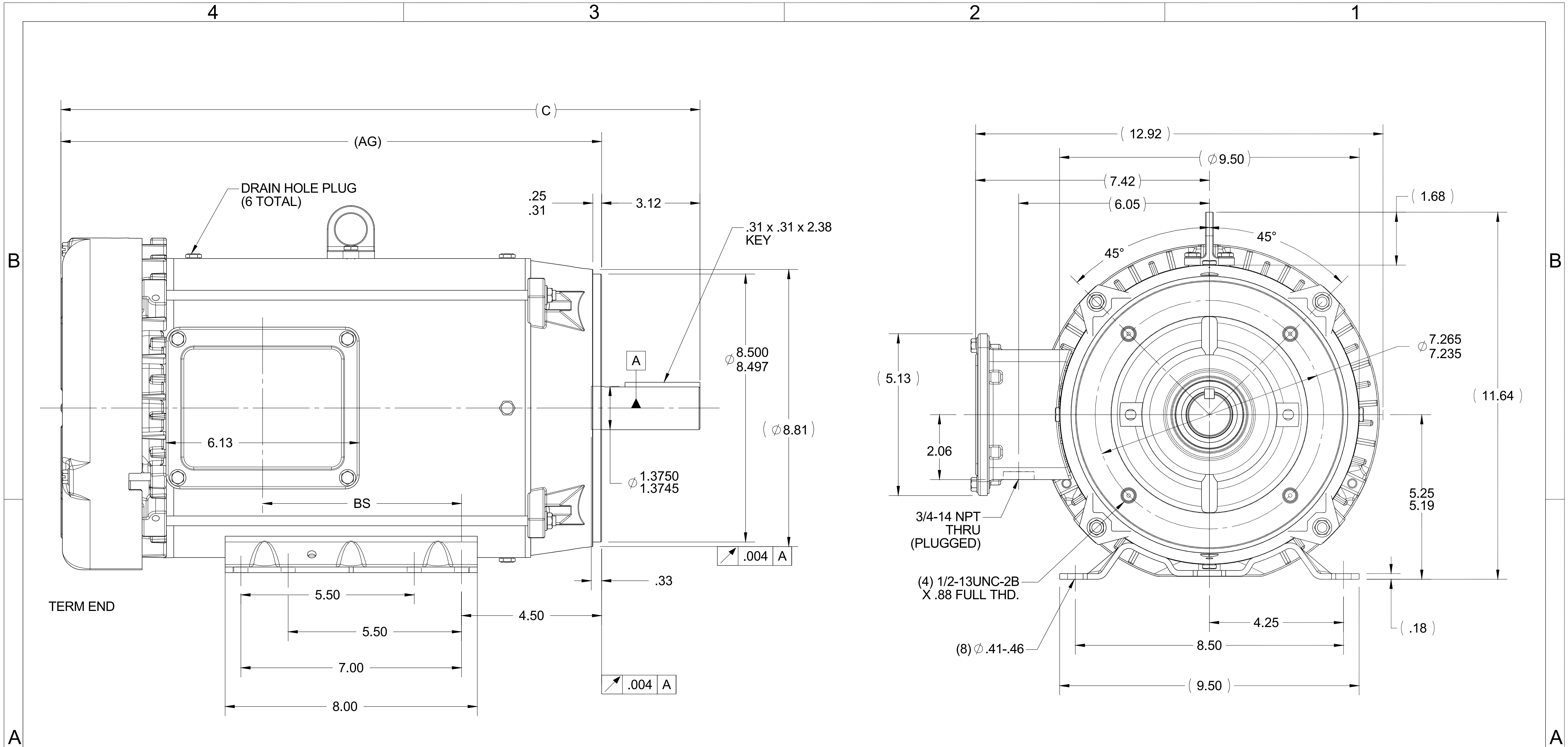
### Nameplate Specifications

Phase	<b>3</b>	Output HP	<b>15 &amp; 10 Hp</b>
Output KW	<b>11.2 &amp; 7.5 kW</b>	Voltage	<b>230/460 &amp; 190/380 V</b>
Speed	<b>3495 &amp; 2930 rpm</b>	Service Factor	<b>1.15 &amp; 1.15</b>
Frame	<b>215TC</b>	Enclosure	<b>Totally Enclosed Fan Cooled</b>
Thermal Protection	<b>No Protection</b>	Efficiency	<b>91 &amp; 91 %</b>
Ambient Temperature	<b>40 °C</b>	Frequency	<b>60 &amp; 50 Hz</b>
Current	<b>35/17.6 &amp; 29/14.5 A</b>	Power Factor	<b>89</b>
Duty	<b>Continuous</b>	Insulation Class	<b>F</b>
Design Code	<b>B</b>	KVA Code	<b>G</b>
Drive End Bearing Size	<b>6309</b>	Opp Drive End Bearing Size	<b>6206</b>
UL	<b>Recognized</b>	CSA	<b>Y</b>
CE	<b>Y</b>	IP Code	<b>43</b>
Number of Speeds	<b>1</b>		

### Technical Specifications

Electrical Type	<b>Squirrel Cage Inverter Rated</b>	Starting Method	<b>Line Or Inverter</b>
Poles	<b>2</b>	Rotation	<b>Reversible</b>
Resistance Main	<b>.7386 Ohms</b>	Mounting	<b>Round</b>
Motor Orientation	<b>Horizontal</b>	Drive End Bearing	<b>Ball</b>
Opp Drive End Bearing	<b>Ball</b>	Frame Material	<b>Rolled Steel</b>
Shaft Type	<b>T</b>	Overall Length	<b>20.96 in</b>
Frame Length	<b>11.15 in</b>	Shaft Diameter	<b>1.375 in</b>
Shaft Extension	<b>3.42 in</b>	Assembly/Box Mounting	<b>F1/F2 CAPABLE</b>
Inverter Load	<b>VARIABLE 10:1</b>		
Connection Drawing	<b>005010.01</b>	Outline Drawing	<b>038033-1115</b>





NOTES:  
 1- NAMEPLATE TO BE READ FROM C'BOX SIDE OF MOTOR.  
 DASH 965 TO BE READ FROM OPPOSITE SHAFT END  
 2- C'BOX CAN BE MOUNTED ON OPPOSITE SIDE BY REMOVING BRACKETS AND TURNING FRAME 180 DEGREES (EXCEPT AS NOTED).

ORACLE REV  
001

DRAWING REVISION B	REVISION BY SAJID	DATE 08/25/15
ECO ECO-0084019	APPROVED BY JD	DATE 08/25/15
ECO DESCRIPTION FAN GUARD UPDATED		
<small>COPYRIGHT REGAL BELOIT AMERICA, INC. ALL RIGHTS RESERVED. PROPRIETARY AND CONFIDENTIAL INFORMATION - THIS DOCUMENT IS THE PROPERTY OF REGAL BELOIT AMERICA, INC. ("OWNER") AND CONTAINS OWNER'S PROPRIETARY INFORMATION. ANY PERSON, CORPORATION OR OTHER FIRM RECEIVING IT IS DEEMED, BY RECEIVING IT, TO AGREE THAT IT, AND/OR ANY PART OF IT, SHALL NOT BE DISCLOSED TO ANY PERSON, CORPORATION OR OTHER ENTITY, DUPLICATED, AND/OR USED, EXCEPT AS EXPRESSLY APPROVED IN WRITING IN ADVANCE BY OWNER. THIS DOCUMENT SHALL BE RETURNED TO OWNER UPON REQUEST. IT MAY BE SUBJECT TO CERTAIN RESTRICTIONS UNDER APPLICABLE EXPORT CONTROL LAWS AND REGULATIONS.</small>		

TOLERANCES UNLESS OTHERWISE SPECIFIED:

DEC.	INCH	mm	ANGLE
.X	±0.1	[±2.5]	±0.5°
.XX	±0.03	[±0.76]	
.XXX	±0.005	[±0.127]	
.XXXX	±0.0005	[±0.0127]	

REMOVE BURRS & BREAK SHARP EDGES: .003/.015 [0.076/.381] X 45°  
 CORNER FILLETS: R.02 [.51]  
 MACHINED SURFACES: 125 INCH 3.2 mm

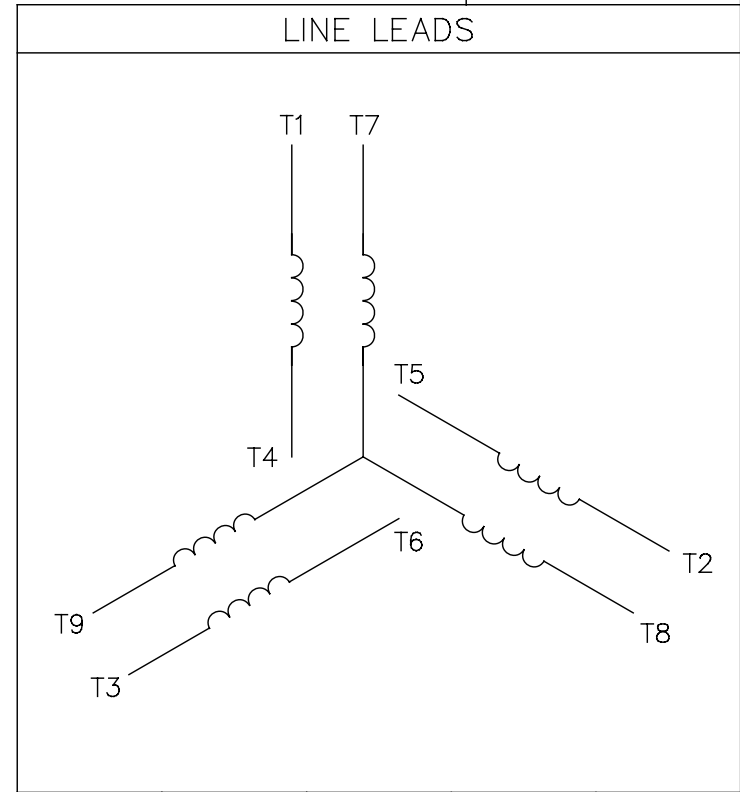
DRAWN BY SS
DATE 08/20/15
APPROVED BY JD
DATE 08/20/15
REFERENCE
THIRD ANGLE PROJECTION

<b>REGAL</b> ™ Regal Beloit America, Inc.	
DESCRIPTION <b>OUTLINE</b>	
WASHDOWN 210FR-TEFC-C-FACE-3PH	
MATERIAL	PROCESS/FINISH
SIZE <b>B</b>	DRAWING NUMBER <b>038033</b>
	SHEET 1 OF 1

DASH	FRAME	C	BS	AG	MOUNTING
965	213T	18.77	4.82	15.65	
1115	213/15T	20.27	6.32	17.15	
1240	215T	21.52	7.57	18.40	F1 ONLY

005010-01

VIEW FROM OUTSIDE OF MOTOR AT SWITCH END.



VOLTAGE	L1	L2	L3	JOIN & INSULATE
HIGH	T1	T2	T3	(T4,T7) (T5,T8) (T6,T9)
LOW	T1,T7	T2,T8	T3,T9	T4,T5,T6

		TOLERANCES UNLESS SPECIFIED		<b>Regal Beloit America, Inc.</b>		DRAWN RDW 04/12/02	
		DEC.	INCHES			CHK	APPD
		.X	±.1	TITLE EXTERNAL WIRING DIAGRAM 3 PHASE W/O PROTECTOR MAT'L. DECAL - 004014		SCALE	1=1
		.XX	±.01			REF	FIG.2-51
		.XXX	±.005			FMF	PREV
A	UPDATED TO REGAL LOGO	SAJ	06/26/15	AJY	.XXXX	±.0005	
NO.	REVISION	BY & DATE	CHK	ANG	±1/2"	FINISH	
THIS DRAWING IN DESIGN AND DETAIL IS OUR PROPERTY AND MUST NOT BE USED EXCEPT IN CONNECTION WITH OUR WORK ALL RIGHTS OF DESIGN AND INVENTION ARE RESERVED THIS IS AN ELECTRONICALLY GENERATED DOCUMENT - DO NOT SCALE THIS PRINT				RFP	04/12/02	CAD FILE	00501001
				DIST	BRF-NLV	SIZE	DRAWING NO.
						A	005010-01
							REV. A



P.O. BOX 8003  
WAUSAU, WI 54401-8003  
PH. 715-675-3311

DATA VOLTS: 460

**CERTIFICATION DATA SHEET**

CUSTOMER: \_\_\_\_\_ CUSTOMER P.O. #: \_\_\_\_\_  
 ORDER #: \_\_\_\_\_ REFERENCE MODEL #: 215TTWWD16006  
 CONN. DIAGRAM: 005010.01 CAT #: N664A  
 OUTLINE: SS86634-1115 CUSTOMER PART #: \_\_\_\_\_  
 WINDING: K2132128 NONE 1 MOUNTING: F1/F2 CAPABLE  
 SPEED: \_\_\_\_\_

**TYPICAL MOTOR PERFORMANCE DATA**

HP	KW	SYNC RPM	FL RPM	FRAME	ENCLOSURE	TYPE	KVA CODE	DESIGN		
15	11.2	3600	3495	215TC	TEFC	TFW	G	B		
PH	HZ	VOLTS	AMPS	START TYPE	DUTY	INSL	S.F.	AMB	ELEV.	
3	60/50	230/460#190/380	35/17.6&28.4/14.2	LINE OR INVERTER	CONT	F	1.15	40	3300	
F.L. EFF	91.0	3/4 LD EFF	90.7	1/2 LD EFF	90.6	GTD EFF	ELECT. TYPE			
F.L. PF	89.0	3/4 LD PF	86.3	1/2 LD PF	79.1	89.5	SQ CAGE INV RATED			
F.L. TORQUE	LR AMPS @ 460 V	L.R. TORQUE	B.D. TORQUE	F.L. RISE (°C)						
22.5 LB-FT	109	42.8 LB-FT 190%	61.8 LB-FT 275%	80						
@ 3 FT.	POWER	ROTOR WK <sup>2</sup>	MAX. LOAD WK <sup>2</sup>	SAFE STALL TIME	STARTS/HOUR	MOTOR WGT				
72 dBA	81 dBA	0.75 LB-FT <sup>2</sup>	18 LB-FT <sup>2</sup>	15 SEC.	2	128 LB.				
*** SUPPLEMENTAL INFORMATION ***										
DE BRACKET TYPE	ODE BRACKET TYPE	MOUNT TYPE	MOTOR ORIENTATION	SEVERE DUTY	HAZARDOUS LOCATION	DRIP COVER	SCREENS	PAINT		
C-FACE	STANDARD	ROUND	HORIZONTAL	NO	NONE	NO	NONE	HITE - LEESON (EPO)		
BEARINGS		GREASE	SHAFT TYPE	SPECIAL DE	SPECIAL ODE	SHAFT MATERIAL	FRAME MATERIAL			
DE	ODE	POLYREX EM	T	NONE	NONE	303 STAINLESS (C-501)	ROLLED STEEL			
BALL	BALL									
6309	6206									
THERMOSTATS	PROTECTORS	WDG RTD's	BRG RTD's	THERMISTORS	CONTROL	SPACE HEATERS				
NONE	NOT	NONE	NONE	NONE	FALSE	NA				
R1 (ohms/ph)	R2 (ohms/ph)	X1 (ohms/ph)	X2 (ohms/ph)	Xm (ohms/ph)	VIBRATION (in/sec)	FLOAT				
0.397	0.295	1.334	1.249	45.171	0.150	ODE				
* N O T E S *					INVERTER TORQUE: VARIABLE 10:1 INV. HP SPEED RANGE: NONE					
					ENCODER: NONE NONE NONE NONE PPR					
					BRAKE: NONE NONE NONE NONE					
					FT-LB: NA VOLTAGE: NONE HZ:					
					UL: V-INS, CONST UL REC					
PREPARED BY: FAREEDA DUDEKULA DATE: 9/17/2018										

FORM: 3531 REV\_4 2/27/06

Data Sheet

215TTWWD16006

Date: 12/5/2018  
 Customer: \_\_\_\_\_  
 Attention: \_\_\_\_\_  
 Submitted by: FAREEDA DUDEKULA



Submittal

Data @ 460 V

Motor Load Data

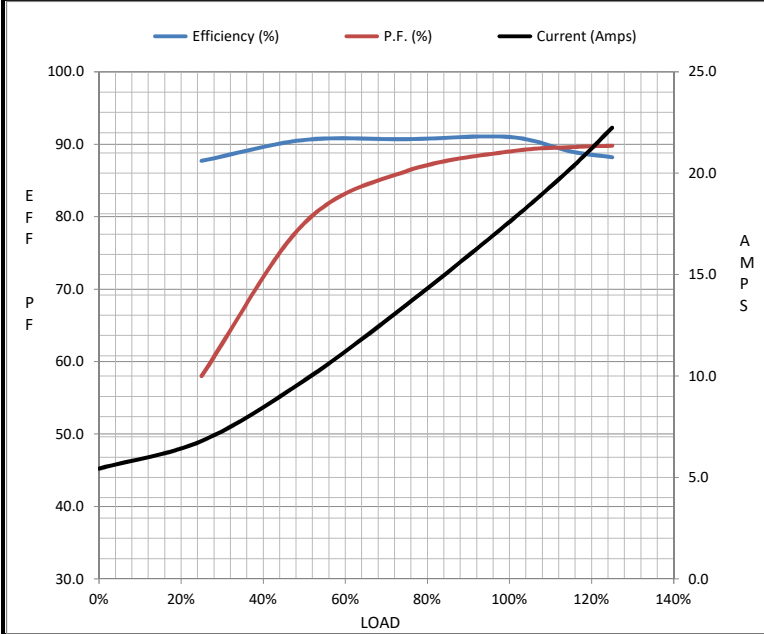
Load	0%	25%	50%	75%	100%	115%	125%	LR
Current (Amps)	5.4	6.8	9.8	13.5	17.6	20.3	22.2	109
Torque (ft-lb)	0.00	5.5	11.1	16.9	22.5	26.1	28.6	42.8
RPM	3600	3576	3552	3524	3495	3,475	3461	0
Efficiency (%)		87.7	90.6	90.7	91.0	89.0	88.2	
P.F. (%)	18.2	58.0	79.1	86.3	89.0	89.6	89.8	45.6

Motor Speed Data

	LR	Pull-Up	BD	Rated	Idle
Speed (RPM)	0	632	3120	3495	3600
Current (Amps)	109	111	70.5	17.6	5.4
Torque (ft-lb)	42.8	42.7	61.8	22.5	0.00

Information Block

HP	15.0			
Sync. RPM	3600			
Frame	215			
Enclosure	TEFC			
Construction	TFR			
Voltage	230/460#190/380 V			
Frequency	60 Hz			
Design	A			
LR Code letter	G			
Service Factor	1.15			
Temp Rise @ FL	80 °C			
Duty	CONT			
Ambient	40 °C			
Elevation	1,000 feet			
Rotor/Shaft wk <sup>2</sup>	0.75 Lb-Ft <sup>2</sup>			
Ref Wdg	K2132128 NONE			
Sound Pressure @ 1M	72 dBA			
VFD Rating	VARIABLE 10:1			
Outline Dwg	SS86634-1115			
Conn. Diag	005010.01			
Additional Specifications:				
0				
0				
EQUIV CKT (OHMS / PHASE)				
R1	R2	X1	X2	Xm
0.3970	0.2950	1.3340	1.2490	45.1710



Speed - Torque Curve

