

PRODUCT INFORMATION PACKET

Model No: 215TTWWD16005

Catalog No: N212A

PowerWash™ XT Wash Down Duty™ Washdown Pump Motor, 10 & 7.50 HP, 3 Ph, 60 & 50 Hz,
230/460 & 190/380 V, 3600 & 3000 RPM, 215JM Frame, TEFC



Regal and Marathon are trademarks of Regal Rexnord Corporation or one of its affiliated companies.

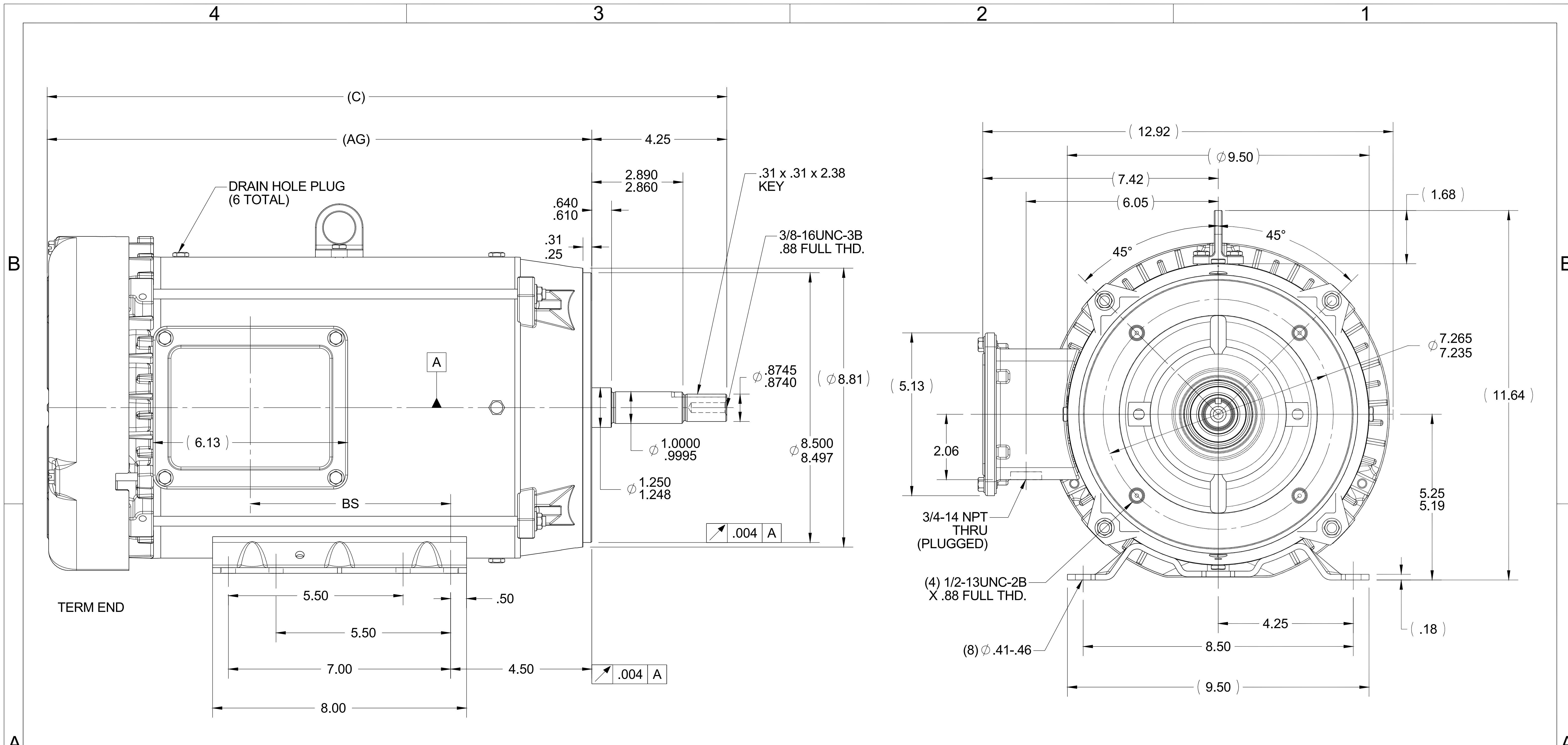
©2023 Regal Rexnord Corporation, All Rights Reserved. MC017097E

Nameplate Specifications

Phase	3	Output HP	10 & 7.50 Hp
Output KW	7.5 & 5.6 kW	Voltage	230/460 & 190/380 V
Speed	3525 & 2930 rpm	Service Factor	1.15 & 1.0
Frame	215JM	Enclosure	Totally Enclosed Fan Cooled
Thermal Protection	No Protection	Efficiency	90.2 & 89.5 %
Ambient Temperature	40 °C	Frequency	60 & 50 Hz
Current	23.6/11.8 & 22/11 A	Power Factor	87.9
Duty	Continuous	Insulation Class	F
Design Code	B	KVA Code	H
Drive End Bearing Size	6309	Opp Drive End Bearing Size	6206
UL	Recognized	CSA	Y
CE	Y	IP Code	55
Number of Speeds	1		

Technical Specifications

Electrical Type	Squirrel Cage Induction Run	Starting Method	Across The Line
Poles	2	Rotation	Reversible
Resistance Main	.8 Ohms	Mounting	Rigid Base
Motor Orientation	Horizontal	Drive End Bearing	Ball
Opp Drive End Bearing	Ball	Frame Material	Rolled Steel
Shaft Type	JM	Overall Length	21.40 in
Frame Length	11.15 in	Shaft Diameter	1.000 in
Shaft Extension	4.50 in	Assembly/Box Mounting	F1 ONLY
Connection Drawing	005010.01	Outline Drawing	038051-1115



- NOTES:
- 1- NAMEPLATE TO BE READ FROM C'BOX SIDE OF MOTOR.
DASH 965 TO BE READ FROM OPPOSITE SHAFT END
 - 2- C'BOX CAN BE MOUNTED ON OPPOSITE SIDE BY REMOVING BRACKETS AND TURNING FRAME 180 DEGREES (EXCEPT AS NOTED).

ORACLE REV
001

DRAWING REVISION A	REVISION BY SYED	DATE 11/19/15
ECO ECO-0087183	APPROVED BY SYED	DATE 11/19/15

TOLERANCES UNLESS OTHERWISE SPECIFIED:

DEC.	INCH	mm	ANGLE
.X	± 0.1	[± 2.5]	$\pm 0.5^\circ$
.XX	± 0.03	[± 0.76]	
.XXX	± 0.005	[± 0.127]	
.XXXX	± 0.0005	[± 0.0127]	

REMOVE BURRS & BREAK SHARP EDGES: .003/.015 [0.076/.381] X 45°
CORNER FILLETS: R.02 [.51]
MACHINED SURFACES: 125 INCH $\sqrt{3.2}$ mm $\sqrt{}$
mm SHOWN IN [BRACKETS]

DRAWN BY SYED	DATE 11/19/15
APPROVED BY SYED	DATE 11/19/15
REFERENCE	THIRD ANGLE PROJECTION

REGAL ™ Regal Beloit America, Inc.	
DESCRIPTION OUTLINE WASHDOWN 210FR-TEFC-C-FACE-3PH	
MATERIAL	PROCESS/FINISH
SIZE B	DRAWING NUMBER 038051
SHEET 1 OF 1	

DASH	FRAME	C	BS	AG	MOUNTING
965	213T	19.90	4.82	15.65	
1115	213/15T	21.40	6.32	17.15	
1240	215T	22.65	7.57	18.40	F1 ONLY

005010-01

VIEW FROM OUTSIDE OF MOTOR AT SWITCH END.



VOLTAGE	L1	L2	L3	JOIN & INSULATE
HIGH	T1	T2	T3	(T4,T7) (T5,T8) (T6,T9)
LOW	T1,T7	T2,T8	T3,T9	T4,T5,T6

				TOLERANCES UNLESS SPECIFIED		REGAL ™ Regal Beloit America, Inc.		DRAWN RDW 04/12/02			
				DEC.	INCHES			CHK			
				.X	±.1			APPD			
				.XX	±.01			SCALE 1=1			
				.XXX	±.005	TITLE		REF FIG.2-51			
A	UPDATED TO REGAL LOGO	SAJ 06/26/15	AJY	.XXXX	±.0005	MAT'L.		FMF			
NO.	REVISION	BY & DATE	CHK	ANG	±1/2"	FINISH		PREV			
THIS DRAWING IN DESIGN AND DETAIL IS OUR PROPERTY AND MUST NOT BE USED EXCEPT IN CONNECTION WITH OUR WORK ALL RIGHTS OF DESIGN AND INVENTION ARE RESERVED THIS IS AN ELECTRONICALLY GENERATED DOCUMENT - DO NOT SCALE THIS PRINT				RFP	04/12/02	CAD FILE		00501001	SIZE	DRAWING NO.	REV.
				DIST	BRF-NLV			A	005010-01	A	



P.O. BOX 8003
WAUSAU, WI 54401-8003
PH. 715-675-3311

DATA VOLTS: 460

CERTIFICATION DATA SHEET

CUSTOMER: _____ CUSTOMER P.O. #: _____
 ORDER #: _____ REFERENCE MODEL #: 215TTWWD16005
 CONN. DIAGRAM: 005010.01 CAT #: N212A
 OUTLINE: 038051-1115 CUSTOMER PART #: _____
 WINDING: K2152226 NONE 2 MOUNTING: F1 ONLY
 SPEED: _____

TYPICAL MOTOR PERFORMANCE DATA

HP	KW	SYNC RPM	FL RPM	FRAME	ENCLOSURE	TYPE	KVA CODE	DESIGN		
10	7.5	3600	3525	215JM	TEFC	TFW	H	B		
PH	HZ	VOLTS	AMPS	START TYPE	DUTY	INSL	S.F.	AMB	ELEV.	
3	60/50	230/460#190/380	23.6/11.8&22/11	ACROSS THE LINE	CONT	F	1.15	40	3300	
F.L. EFF	90.2	3/4 LD EFF	91.5	1/2 LD EFF	90.8	GTD EFF	88.5	ELECT. TYPE	SQ CAGE IND RUN	
F.L. PF	87.9	3/4 LD PF	83.5	1/2 LD PF	73.7					
F.L. TORQUE	LR AMPS @ 460 V	L.R. TORQUE	B.D. TORQUE	F.L. RISE (°C)						
14.9 LB-FT	79.5	27.7 LB-FT 186%	47.1 LB-FT 316%	60						
@ 3 FT.	POWER	ROTOR WK ²	MAX. LOAD WK ²	SAFE STALL TIME	STARTS/HOUR	MOTOR WGT				
72 dBA	81 dBA	0.55 LB-FT ²	18 LB-FT ²	15 SEC.	2	120 LB.				
*** SUPPLEMENTAL INFORMATION ***										
DE BRACKET TYPE	ODE BRACKET TYPE	MOUNT TYPE	MOTOR ORIENTATION	SEVERE DUTY	HAZARDOUS LOCATION	DRIP COVER	SCREENS	PAINT		
C-FACE	STANDARD	RIGID	HORIZONTAL	NO	NONE	NO	NONE	HITE - LEESON (EPO)		
BEARINGS		GREASE	SHAFT TYPE	SPECIAL DE	SPECIAL ODE	SHAFT MATERIAL	FRAME MATERIAL			
DE	ODE	POLYREX EM	JM	NONE	NONE	303 STAINLESS (C-501)	ROLLED STEEL			
BALL	BALL									
6309	6206									
THERMOSTATS	PROTECTORS	WDG RTD's	BRG RTD's	THERMISTORS	CONTROL	SPACE HEATERS				
NONE	NOT	NONE	NONE	NONE	FALSE	NA				
R1 (ohms/ph)	R2 (ohms/ph)	X1 (ohms/ph)	X2 (ohms/ph)	Xm (ohms/ph)	VIBRATION (in/sec)	FLOAT				
0.828	0.502	1.974	1.347	58.563	0.150	ODE				
* N O T E S *					INVERTER TORQUE: NONE					
					INV. HP SPEED RANGE: NONE					
					ENCODER: NONE					
					NONE					
					NONE NONE PPR					
PREPARED BY: FAREEDA DUDEKULA				BRAKE: NONE						
DATE: 9/17/2018				NONE NONE						
				FT-LB: NA						
				VOLTAGE: NONE HZ:						
				UL: V-INS, CONST UL REC						

FORM: 3531 REV_4 2/27/06

Data Sheet

215TTWWD16005

Date: 12/10/2018
 Customer: _____
 Attention: _____
 Submitted by: FAREEDA DUDEKULA



Submittal

Data @ 460 V

Motor Load Data

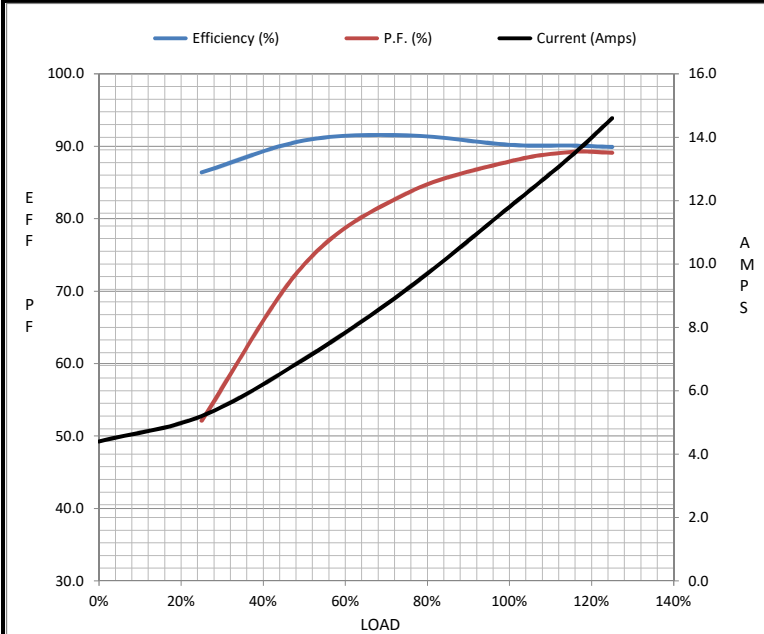
Load	0%	25%	50%	75%	100%	115%	125%	LR
Current (Amps)	4.4	5.2	7.0	9.2	11.8	13.4	14.6	79.5
Torque (ft-lb)	0.00	3.7	7.4	11.1	14.9	17.2	18.8	27.7
RPM	3600	3580	3564	3545	3525	3510	3500	0
Efficiency (%)		86.4	90.8	91.5	90.2	90.1	89.9	
P.F. (%)	7.4	52.1	73.7	83.5	87.9	89.2	89.1	46.3

Motor Speed Data

	LR	Pull-Up	BD	Rated	Idle
Speed (RPM)	0	700	3070	3525	3600
Current (Amps)	79.5	78.0	52.0	11.8	4.4
Torque (ft-lb)	27.7	28.5	47.1	14.9	0.00

Information Block

HP	10.0			
Sync. RPM	3600			
Frame	215			
Enclosure	TEFC			
Construction	TFR			
Voltage	230/460#190/380 V			
Frequency	60 Hz			
Design	B			
LR Code letter	H			
Service Factor	1.15			
Temp Rise @ FL	60 °C			
Duty	CONT			
Ambient	40 °C			
Elevation	1,000 feet			
Rotor/Shaft wk ²	0.55 Lb-Ft ²			
Ref Wdg	K2152226 NONE			
Sound Pressure @ 1M	72 dBA			
VFD Rating	NONE			
Outline Dwg	038051-1115			
Conn. Diag	005010.01			
Additional Specifications:				
0				
0				
EQUIV CKT (OHMS / PHASE)				
R1	R2	X1	X2	Xm
0.8280	0.5020	1.9740	1.3470	58.5630



Speed - Torque Curve

