

PRODUCT INFORMATION PACKET

Model No: 215TTWRD6027

Catalog No: N319B

PowerWash™ XT Wash Down Duty™ General Purpose Motor, 10 & 7.5 HP, 3 Ph, 60 & 50 Hz,
208-230/460 & 190/380 V, 1800 & 1500 RPM, 215T Frame, TEFC



Regal and Marathon are trademarks of Regal Rexnord Corporation or one of its affiliated companies.

©2023 Regal Rexnord Corporation, All Rights Reserved. MC017097E

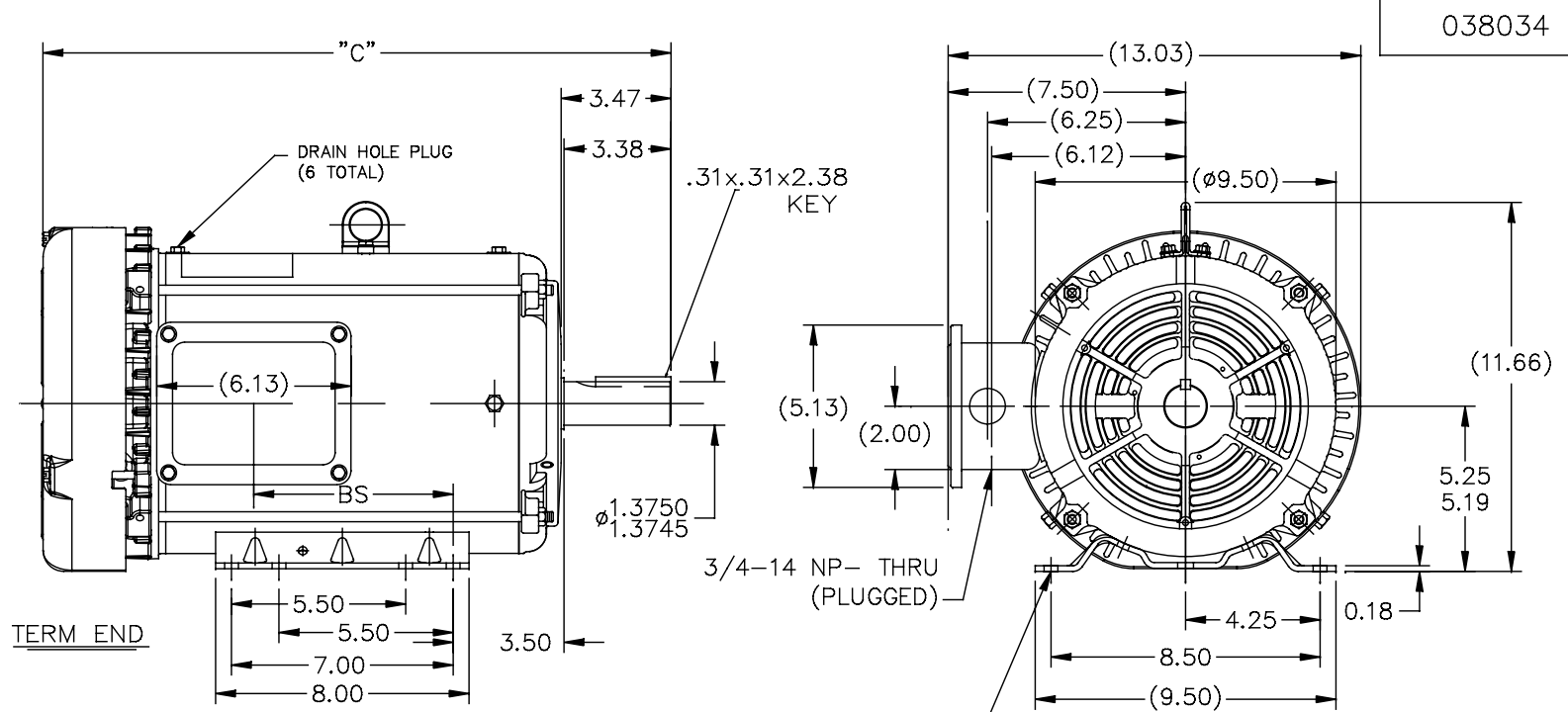


Nameplate Specifications

Phase	3	Output HP	10 & 7.50 Hp
Output KW	7.5 & 5.6 kW	Voltage	208-230/460 & 190/380 V
Speed	1760 & rpm	Service Factor	1.15 & 1.0
Frame	215T	Enclosure	Totally Enclosed Fan Cooled
Thermal Protection	No Protection	Efficiency	91.7 %
Ambient Temperature	40 °C	Frequency	60 & 50 Hz
Current	14-26.4/13.2 & 27.4/13.7 A	Power Factor	77.5
Duty	Continuous	Insulation Class	F
Design Code	B	KVA Code	H
Drive End Bearing Size	6307	Opp Drive End Bearing Size	6206
UL	Recognized	CSA	Y
CE	Y	IP Code	43
Number of Speeds	1		

Technical Specifications

Electrical Type	Squirrel Cage Inverter Rated	Starting Method	Line Or Inverter
Poles	4	Rotation	Reversible
Resistance Main	.9 Ohms	Mounting	Rigid Base
Motor Orientation	Horizontal	Drive End Bearing	Ball
Opp Drive End Bearing	Ball	Frame Material	Rolled Steel
Shaft Type	T	Overall Length	19.54 in
Frame Length	11.15 in	Shaft Diameter	1.375 in
Shaft Extension	3.47 in	Assembly/Box Mounting	F1/F2 CAPABLE
Inverter Load	CONSTANT 10:1		
Outline Drawing	038034-1115	Connection Drawing	005010.01



038034

DASH	FRAME	C	BS	MOUNTING
965	213T	18.04	4.82	F1/F2
1115	213/15T	19.54	6.32	F1/F2
1240	215T	20.79	7.57	F1 ONLY

MAXIMUM FACE RUNOUT TO BE .004 T.I.R.
 MAXIMUM PILOT ECCENTRICITY TO BE .004 T.I.R.
 PERMISSIBLE SHAFT RUNOUT TO BE .002 T.I.R.
 ALIGN BASE TO C-FACE MOUNTING HOLES WITHIN $\pm 1/16$ "

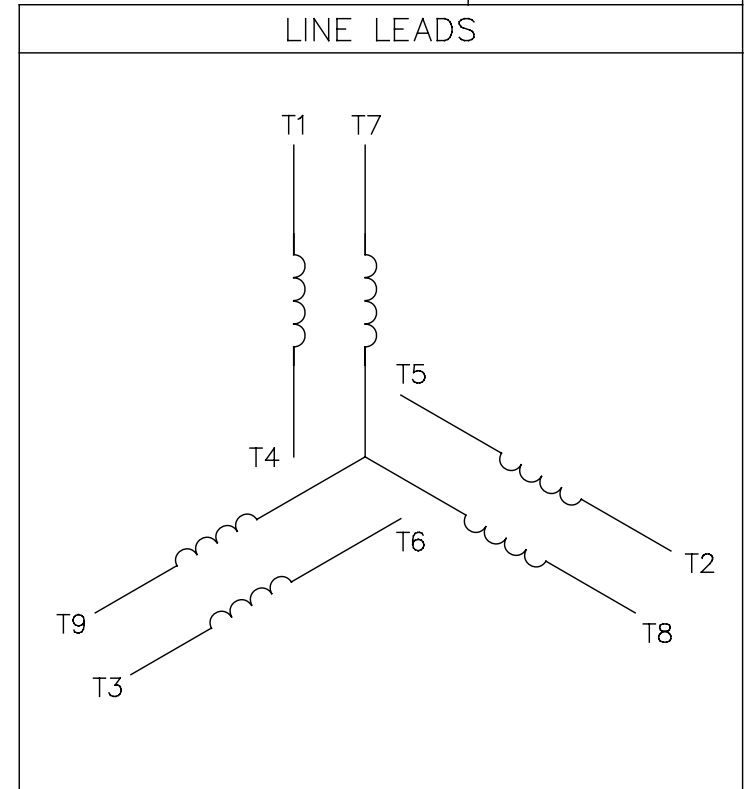
SPECIAL FEATURES:

- 1) SHAFT SEALS & V-RING
- 2) PLUGGED DRAIN HOLES IN FRAME & CONDUIT BOX
- 3) GASKETS THROUGHOUT
- 4) STAINLESS STEEL SHAFT, HARDWARE & NAMEPLATE

		TOLERANCES UNLESS SPECIFIED		Regal Beloit America, Inc.		DRAWNSYED 08/21/2015					
		DEC.	INCHES			CHK	AJ 08/21/2015				
		.X	$\pm .1$			APPD					
		.XX	$\pm .03$			SCALE	1=5				
01	FAN GUARD UPDATED	SAJ	08/25/15	JD	.XXX	$\pm .005$	REF				
0	NEW DRAWING RELEASE				.XXXX	$\pm .0005$	FMF				
NO.	REVISION	BY & DATE	CHK	ANG	$\pm 1/2$ "	FINISH	PREV				
THIS DRAWING IN DESIGN AND DETAIL IS OUR PROPERTY AND MUST NOT BE USED EXCEPT IN CONNECTION WITH OUR WORK ALL RIGHTS OF DESIGN AND INVENTION ARE RESERVED THIS IS AN ELECTRONICALLY GENERATED DOCUMENT - DO NOT SCALE THIS PRINT				RFP	CAD FILE	038034	SIZE	DRAWING NO.	PAGE	OF	REV.
				DIST			A	038034			B

005010-01

VIEW FROM OUTSIDE OF MOTOR AT SWITCH END.



VOLTAGE	L1	L2	L3	JOIN & INSULATE
HIGH	T1	T2	T3	(T4,T7) (T5,T8) (T6,T9)
LOW	T1,T7	T2,T8	T3,T9	T4,T5,T6

				TOLERANCES UNLESS SPECIFIED		Regal Beloit America, Inc.		DRAWN RDW 04/12/02				
				DEC.	INCHES			CHK				
				.X	±.1			APPD				
				.XX	±.01			SCALE 1=1				
				.XXX	±.005	TITLE		REF FIG.2-51				
A	UPDATED TO REGAL LOGO			SAJ	06/26/15	AJY	.XXXX	±.0005	MAT'L.	DECAL - 004014	FMF	
NO.	REVISION			BY & DATE	CHK	ANG	±1/2"	FINISH			PREV	
THIS DRAWING IN DESIGN AND DETAIL IS OUR PROPERTY AND MUST NOT BE USED EXCEPT IN CONNECTION WITH OUR WORK ALL RIGHTS OF DESIGN AND INVENTION ARE RESERVED THIS IS AN ELECTRONICALLY GENERATED DOCUMENT - DO NOT SCALE THIS PRINT				RFP	04/12/02		CAD FILE	00501001		SIZE	DRAWING NO.	
				DIST	BRF-NLV				A	005010-01		REV.



P.O. BOX 8003
WAUSAU, WI 54401-8003
PH. 715-675-3311

DATA VOLTS: 460

CERTIFICATION DATA SHEET

CUSTOMER: _____ CUSTOMER P.O. #: _____
 ORDER #: _____ REFERENCE MODEL #: 215TTWRD6027
 CONN. DIAGRAM: 005010.01 CAT #: N319A
 OUTLINE: 038034-1115 CUSTOMER PART #: _____
 WINDING: K2154513 NONE 3 MOUNTING: F1/F2 CAPABLE
 SPEED: _____

TYPICAL MOTOR PERFORMANCE DATA

HP	KW	SYNC RPM	FL RPM	FRAME	ENCLOSURE	TYPE	KVA CODE	DESIGN	
10	7.5	1800	1760	215T	TEFC	TFW	H	B	
PH	HZ	VOLTS	AMPS	START TYPE	DUTY	INSL	S.F.	AMB	ELEV.
3	60/50	208-230/460#190/380	14-26.4/13.2&27.4/13.7	LINE OR INVERTER	CONT	F	1.15	40	3300
F.L. EFF	91.7	3/4 LD EFF	91.7	1/2 LD EFF	91.0	GTD EFF	90.2	ELECT. TYPE	
F.L. PF	77.5	3/4 LD PF	69.6	1/2 LD PF	57.2	SQ CAGE INV RATED			
F.L. TORQUE	LR AMPS @ 460 V	L.R. TORQUE	B.D. TORQUE	F.L. RISE (°C)					
29.9 LB-FT	81.0	76.0 LB-FT 254%	90.0 LB-FT 301%	65					
@ 3 FT.	POWER	ROTOR WK ²	MAX. LOAD WK ²	SAFE STALL TIME	STARTS/HOUR	MOTOR WGT			
62 dBA	71 dBA	1.10 LB-FT ²	50 LB-FT ²	20 SEC.	2	150	LB.		
*** SUPPLEMENTAL INFORMATION ***									
DE BRACKET TYPE	ODE BRACKET TYPE	MOUNT TYPE	MOTOR ORIENTATION	SEVERE DUTY	HAZARDOUS LOCATION	DRIP COVER	SCREENS	PAINT	
STANDARD	STANDARD	RIGID	HORIZONTAL	NO	NONE	NO	NONE	HITE - LEESON (EPO)	
BEARINGS		GREASE	SHAFT TYPE	SPECIAL DE	SPECIAL ODE	SHAFT MATERIAL	FRAME MATERIAL		
DE	ODE	POLYREX EM	T	NONE	NONE	303 STAINLESS (C-501)	ROLLED STEEL		
BALL	BALL	6307	6206						
THERMOSTATS	PROTECTORS	WDG RTD's	BRG RTD's	THERMISTORS	CONTROL	SPACE HEATERS			
NONE	NOT	NONE	NONE	NONE	FALSE	NA			
R1 (ohms/ph)	R2 (ohms/ph)	X1 (ohms/ph)	X2 (ohms/ph)	Xm (ohms/ph)	VIBRATION (in/sec)	FLOAT			
0.584	0.505	1.764	2.136	36.032	0.150	ODE			

* N O T E S *						INVERTER TORQUE: CONSTANT 10:1 INV. HP SPEED RANGE: NONE					
						ENCODER: NONE NONE NONE					
						BRAKE: NONE NONE					
						FT-LB: NA VOLTAGE: NONE					
						UL: V-INS, CONST UL REC					
PREPARED BY: FAREEDA DUDEKULA											
DATE: 9/17/2018											

FORM: 3531 REV_4 2/27/06

Data Sheet

Date: 12/5/2018
 Customer: _____
 Attention: _____
 Submitted by: FAREEDA DUDEKULA



215TTWRD6027

Submittal

Data @ 460 V

Motor Load Data

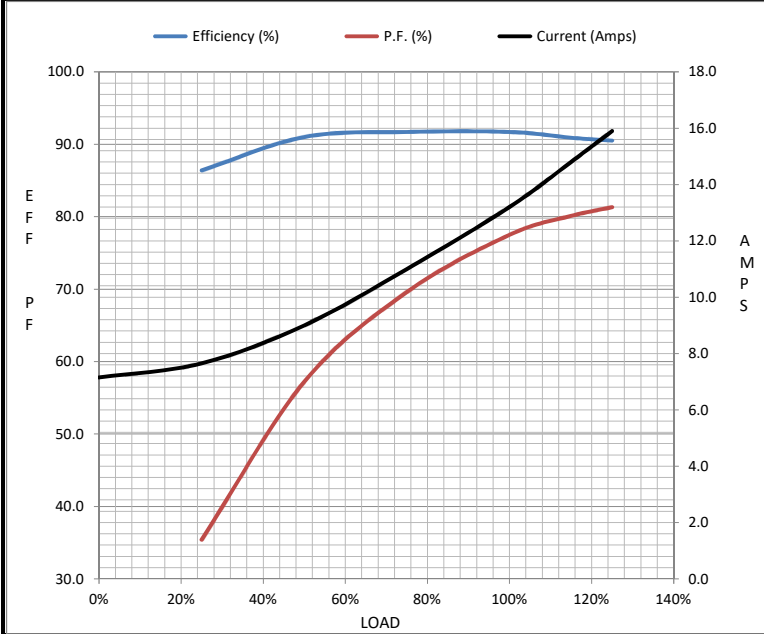
Load	0%	25%	50%	75%	100%	115%	125%	LR
Current (Amps)	7.2	7.7	9.0	11.0	13.2	14.8	15.9	81.0
Torque (ft-lb)	0.00	7.3	14.8	22.3	29.9	34.5	37.6	76.0
RPM	1800	1790	1780	1770	1760	1,754	1747	0
Efficiency (%)		86.4	91.0	91.7	91.7	90.9	90.5	
P.F. (%)	4.8	35.4	57.2	69.6	77.5	80.1	81.3	42.0

Motor Speed Data

	LR	Pull-Up	BD	Rated	Idle
Speed (RPM)	0	900	1575	1760	1800
Current (Amps)	81.0	78.0	51.0	13.2	7.2
Torque (ft-lb)	76.0	70.0	90.0	29.9	0.00

Information Block

HP	10.0			
Sync. RPM	1800			
Frame	215			
Enclosure	TEFC			
Construction	TFR			
Voltage	208-230/460#190/380 V			
Frequency	60 Hz			
Design	B			
LR Code letter	H			
Service Factor	1.15			
Temp Rise @ FL	65 °C			
Duty	CONT			
Ambient	40 °C			
Elevation	1,000 feet			
Rotor/Shaft wk ²	1.10 Lb-Ft ²			
Ref Wdg	K2154513 NONE			
Sound Pressure @ 1M	62 dBA			
VFD Rating	CONSTANT 10:1			
Outline Dwg	038034-1115			
Conn. Diag	005010.01			
Additional Specifications:				
0				
0				
EQUIV CKT (OHMS / PHASE)				
R1	R2	X1	X2	Xm
0.5840	0.5050	1.7640	2.1360	36.0320



Speed - Torque Curve

