

# PRODUCT INFORMATION PACKET

**marathon**<sup>®</sup>  
Motors

Model No: 215TTWR7026

Catalog No: N661

General Purpose Motor, 10 & 7.50 HP, 3 Ph, 60 & 50 Hz, 230/460 & 208-230/460 V, 1800 & 1500 RPM,  
215TCV Frame, TEFC

Regal and Marathon are trademarks of Regal Rexnord Corporation or one of its affiliated companies.

©2023 Regal Rexnord Corporation, All Rights Reserved. MC017097E

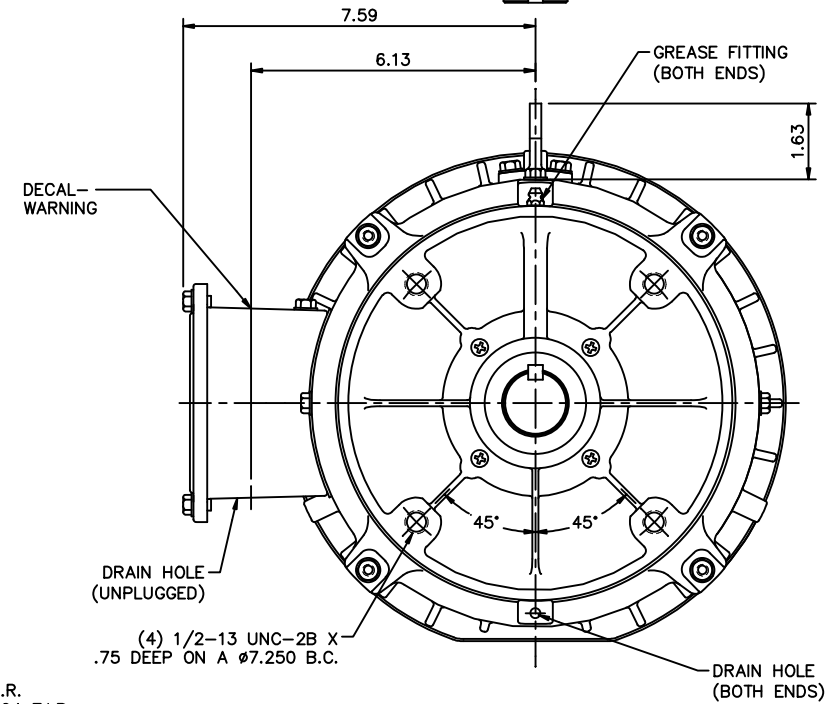
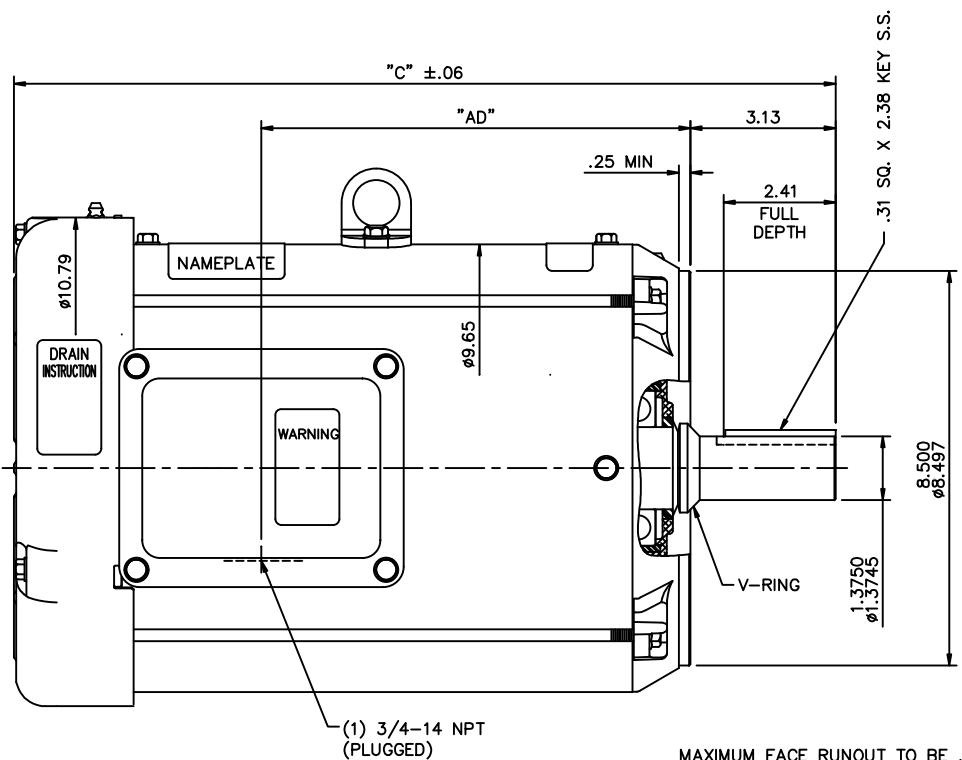
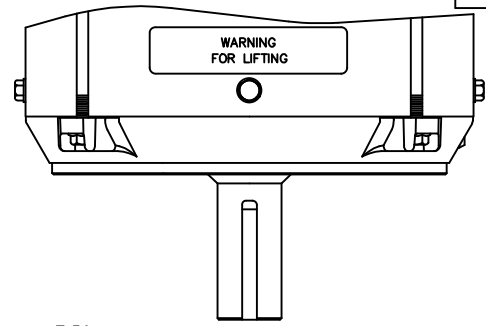
**RegalRexnord**

### Nameplate Specifications

Phase	3	Output HP	10 & 7.50 Hp
Output KW	7.5 & 5.6 kW	Voltage	230/460 & 208-230/460 V
Speed	1760 & 1450 rpm	Service Factor	1.15 & 1.15
Frame	215TCV	Enclosure	Totally Enclosed Fan Cooled
Thermal Protection	No Protection	Efficiency	89.5 & 90.2 %
Ambient Temperature	40 °C	Frequency	60 & 50 Hz
Current	28/14 & 26/13 A	Power Factor	76
Duty	Continuous	Insulation Class	F
Design Code	B	KVA Code	J
Drive End Bearing Size	6209	Opp Drive End Bearing Size	6206
UL	Recognized	CSA	Y
CE	Y	IP Code	55
Number of Speeds	1		

### Technical Specifications

Electrical Type	Squirrel Cage Induction Run	Starting Method	Across The Line
Poles	4	Rotation	Reversible
Resistance Main	.99 Ohms	Mounting	Round
Motor Orientation	Horizontal Or Shaft Down	Drive End Bearing	Ball
Opp Drive End Bearing	Ball	Frame Material	Rolled Steel
Shaft Type	T	Overall Length	18.21 in
Frame Length	11.50 in	Shaft Diameter	1.375 in
Shaft Extension	3.38 in	Assembly/Box Mounting	F1 ONLY
Connection Drawing	005010.01ME	Outline Drawing	037607ME-1150



MAXIMUM FACE RUNOUT TO BE .004 T.I.R.  
 MAXIMUM PILOT ECCENTRICITY TO BE .004 T.I.R.  
 PERMISSIBLE SHAFT RUNOUT TO BE .002 T.I.R.

**SPECIAL FEATURES:**

- BUNA-N GASKETS THROUGHOUT
- SHAFT SEALS - BOTH ENDS OF MOTOR
- V-RING AT SHAFT END OF MOTOR
- STAINLESS STEEL SHAFT, NAMEPLATE & HARDWARE

DASH NO.	"C"	"AD"
1000	16.71	8.25
1050	17.21	8.75
1100	17.71	9.25
1150	18.21	9.75
1200	18.71	10.25
1250	19.21	10.75

REVISION		BY & DATE	CHK	ANG	±1/2'	FINISH	MARATHON ELECTRIC		DRAWN	RDW 2/19/03
01	UPDATED TO NEW STANDARDS	LST 8/7/2008					TITLE		CHK	
THIS DRAWING IN DESIGN AND DETAIL IS OUR PROPERTY AND MUST NOT BE USED EXCEPT IN CONNECTION WITH OUR WORK ALL RIGHTS OF DESIGN AND INVENTION ARE RESERVED THIS IS AN ELECTRONICALLY GENERATED DOCUMENT - DO NOT SCALE THIS PRINT							OUTLINE - 210TC FRAME TEFC - "C" FACE		APPD	SW 2/19/03
							WASHGUARD		SCALE	3=8
							RFP 2/19/03 CAD FILE 037607ME		REF	
							DIST		FMF	
							SIZE B		PREV	
							DRAWING NO. 037607		REV.	01

VIEW FROM OUTSIDE OF MOTOR AT SWITCH END.



VOLTAGE	L1	L2	L3	JOIN & INSULATE
HIGH	T1	T2	T3	(T4,T7) (T5,T8) (T6,T9)
LOW	T1,T7	T2,T8	T3,T9	T4,T5,T6

NO.	REVISION	BY & DATE	CHK	TOLERANCES UNLESS SPECIFIED		TITLE	DRAWN RDW 04/12/02	
				DEC.	INCHES			
				.X	±.1	 EXTERNAL WIRING DIAGRAM 3 PHASE W/O PROTECTOR DECAL - 004014	CHK	
				.XX	±.01		APPD	
				.XXX	±.005		SCALE 1=1	
				.XXXX	±.0005		REF FIG.2-51	
				ANG ±1/2'		MAT'L.	FMF	
						FINISH	PREV	
				RFP 04/12/02	CAD FILE 00501001ME	SIZE A	DRAWING NO. 005010-01ME	REV.
				DIST				

THIS DRAWING IN DESIGN AND DETAIL IS OUR PROPERTY AND MUST NOT BE USED EXCEPT IN CONNECTION WITH OUR WORK ALL RIGHTS OF DESIGN AND INVENTION ARE RESERVED THIS IS AN ELECTRONICALLY GENERATED DOCUMENT - DO NOT SCALE THIS PRINT