

PRODUCT INFORMATION PACKET

marathon®
Motors

Model No: 215TTWR6026

Catalog No: N619A

PowerWash™ XT Wash Down Duty™ General Purpose Motor, 10 & 7.50 HP, 3 Ph, 60 & 50 Hz,
230/460 & 190/380 V, 1800 & 1500 RPM, 215TC Frame, TEFC



Regal and Marathon are trademarks of Regal Rexnord Corporation or one of its affiliated companies.

©2023 Regal Rexnord Corporation, All Rights Reserved. MC017097E

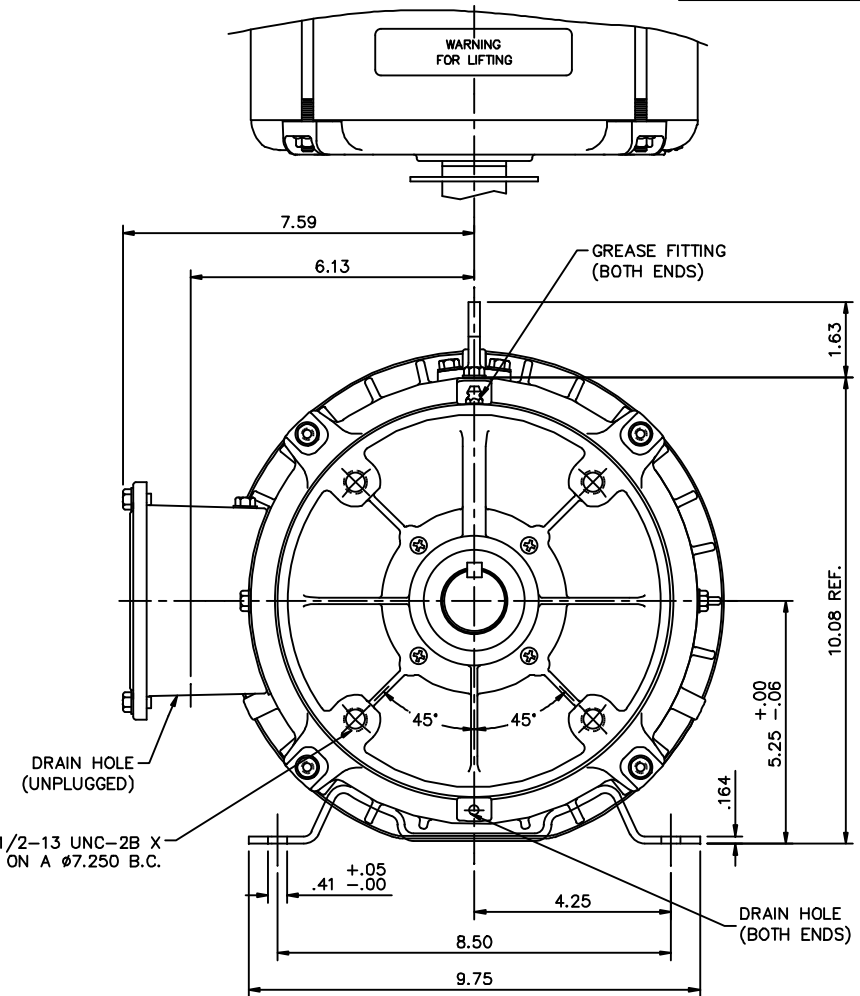
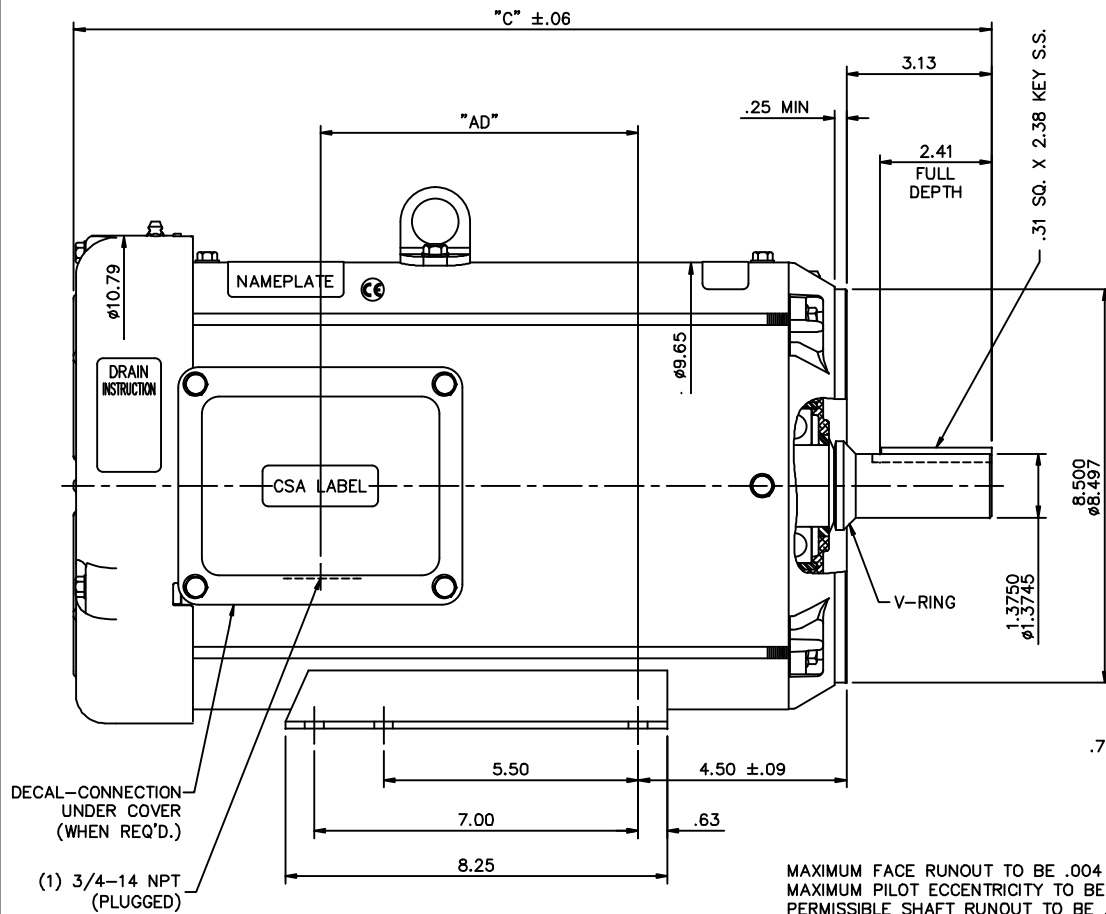
RegalRexnord

Nameplate Specifications

Phase	3	Output HP	10 & 7.50 Hp
Output KW	7.5 & 5.6 kW	Voltage	230/460 & 190/380 V
Speed	1765 & 1460 rpm	Service Factor	1.15 & 1.0
Frame	215TC	Enclosure	Totally Enclosed Fan Cooled
Thermal Protection	No Protection	Efficiency	91.7 & 91.7 %
Ambient Temperature	40 °C	Frequency	60 & 50 Hz
Current	26.8/13.4 & 31.2/15.6 A	Power Factor	77
Duty	Continuous	Insulation Class	F
Design Code	B	KVA Code	H
Drive End Bearing Size	6209	Opp Drive End Bearing Size	6206
UL	Recognized	CSA	Y
CE	Y	IP Code	55
Number of Speeds	1		

Technical Specifications

Electrical Type	Squirrel Cage Inverter Rated	Starting Method	Line Or Inverter
Poles	4	Rotation	Reversible
Resistance Main	.755 Ohms	Mounting	Rigid Base
Motor Orientation	Horizontal	Drive End Bearing	Ball
Opp Drive End Bearing	Ball	Frame Material	Rolled Steel
Shaft Type	T	Overall Length	19.71 in
Frame Length	13.00 in	Shaft Diameter	1.375 in
Shaft Extension	3.13 in	Assembly/Box Mounting	F1/F2 Capable
Inverter Load	CONSTANT 10:1		
Outline Drawing	037638ME-1300	Connection Drawing	005010.01ME



MAXIMUM FACE RUNOUT TO BE .004 T.I.R.
 MAXIMUM PILOT ECCENTRICITY TO BE .004 T.I.R.
 PERMISSIBLE SHAFT RUNOUT TO BE .002 T.I.R.

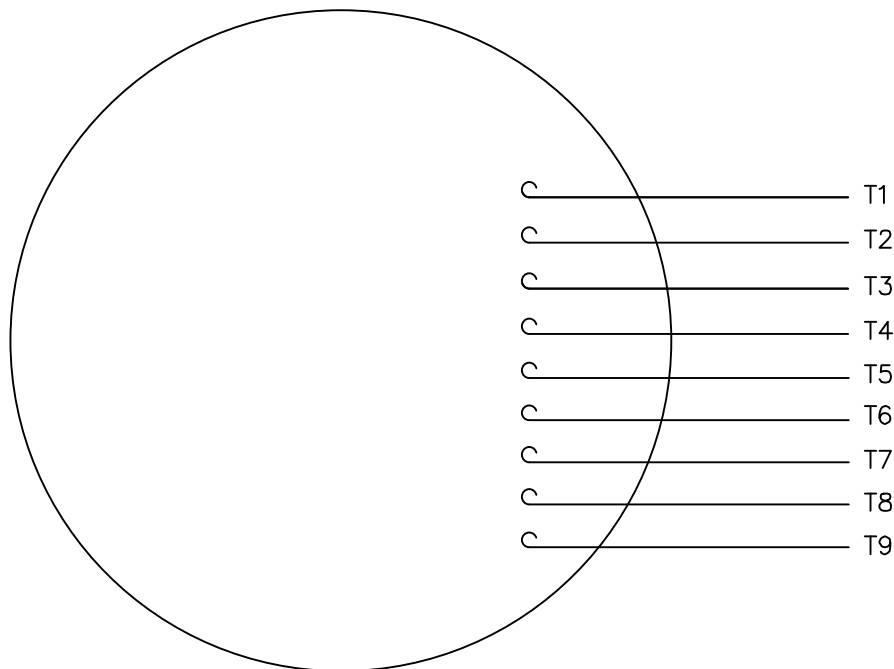
SPECIAL FEATURES:

BUNA-N GASKETS THROUGHOUT
 SHAFT SEALS - BOTH ENDS OF MOTOR
 V-RING AT SHAFT END OF MOTOR
 STAINLESS STEEL SHAFT, NAMEPLATE & HARDWARE

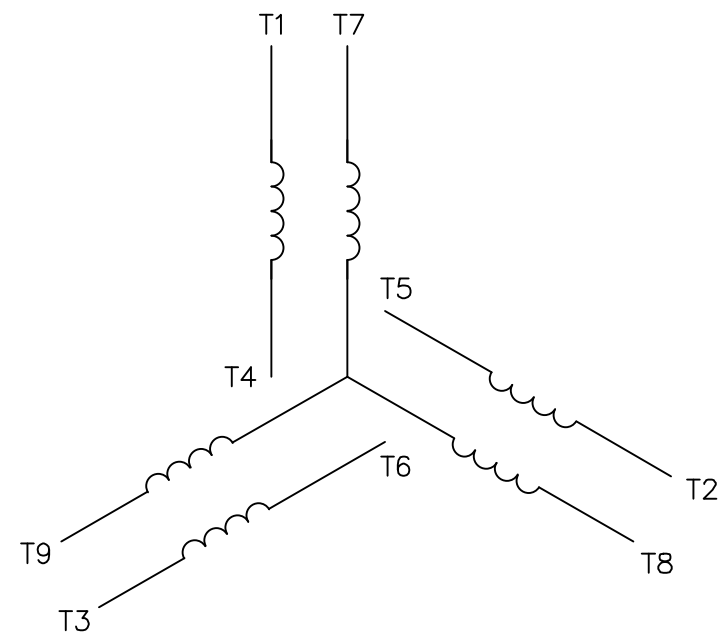
DASH NO.	"C"	"AD"
1100	17.71	4.75
1150	18.21	5.25
1200	18.71	5.75
1250	19.21	6.25
1300	19.71	6.75
1350	20.21	7.25

				TOLERANCES UNLESS SPECIFIED		MARATHON ELECTRIC	DRAWN LST 4/25/08
				DEC.	INCHES		
				.X	±.1	TITLE OUTLINE - 210TC FRAME TEFC - "C" FACE RIGID	SCALE 3-B
				.XX	±.03		
				.XXX	±.005		
01	ADDED WASH GUARD LOGO	SD 04/09/2011	BY & DATE	.XXXX	±.0005	MAT'L WASHGUARD	REF 037607
NO.	REVISION	BY & DATE	CHK	ANG	±1/2"	FINISH	PREV
THIS DRAWING IN DESIGN AND DETAIL IS OUR PROPERTY AND MUST NOT BE USED EXCEPT IN CONNECTION WITH OUR WORK ALL RIGHTS OF DESIGN AND INVENTION ARE RESERVED THIS IS AN ELECTRONICALLY GENERATED DOCUMENT - DO NOT SCALE THIS PRINT				RFP		CAD FILE 037638ME	SIZE B
				DIST			DRAWING NO. 037638
							REV. 01


VIEW FROM OUTSIDE OF MOTOR AT SWITCH END.



LINE LEADS



VOLTAGE	L1	L2	L3	JOIN & INSULATE
HIGH	T1	T2	T3	(T4,T7) (T5,T8) (T6,T9)
LOW	T1,T7	T2,T8	T3,T9	T4,T5,T6

				TOLERANCES UNLESS SPECIFIED		 MARATHON ELECTRIC	DRAWN RDW 04/12/02		
				DEC.	INCHES		CHK		
				.X	±.1		APPD		
				.XX	±.01		TITLE EXTERNAL WIRING DIAGRAM 3 PHASE W/O PROTECTOR	SCALE 1=1	
				.XXX	±.005			REF FIG.2—51	
				.XXXX	±.0005		MAT'L. DECAL — 004014	FMF	
NO.	REVISION	BY & DATE	CHK	ANG	±1/2*	FINISH	PREV		
THIS DRAWING IN DESIGN AND DETAIL IS OUR PROPERTY AND MUST NOT BE USED EXCEPT IN CONNECTION WITH OUR WORK ALL RIGHTS OF DESIGN AND INVENTION ARE RESERVED THIS IS AN ELECTRONICALLY GENERATED DOCUMENT — DO NOT SCALE THIS PRINT			RFP	04/12/02	CAD FILE	00501001ME	SIZE	DRAWING NO.	REV.
			DIST				A	005010—01ME	

CERTIFICATION DATA SHEET

Model#: 215TTWR6026 AA
 CONN. DIAGRAM: 005010.01ME
 OUTLINE: 037638ME-1300

WINDING#: T9497 FR 3
 ASSEMBLY: F1/F2 CAPABLE

TYPICAL MOTOR PERFORMANCE DATA

HP	KW	SYNC. RPM	F.L. RPM	FRAME	ENCLOSURE	KVA CODE	DESIGN
10&7 1/2	7.50&5.60	1800	1765&1460	215TC	TEFC	H	B

PH	Hz	VOLTS	FL AMPS	START TYPE	DUTY	INSL	S.F	AMB°C	ELEVATION
3	60/50	230/460#190/ 380	26.8/13.4&31. 2/15.6	LINE OR INVERTER	CONTINUOU S	F4	1.15/1.0	40	3300

FULL LOAD EFF: 91.7&91.7	3/4 LOAD EFF: 91.7	1/2 LOAD EFF: 90.6	GTD. EFF	ELEC. TYPE	NO LOAD AMPS
FULL LOAD PF: 77&79	3/4 LOAD PF: 71.7	1/2 LOAD PF: 60.1	0	SQ CAGE INV RATED	12.4 / 6.2

F.L. TORQUE	LOCKED ROTOR AMPS	L.R. TORQUE	B.D. TORQUE	F.L. RISE°C
29.75 LB-FT	158 / 79	55.2 LB-FT 186	90 LB-FT 303	0

SOUND PRESSURE @ 3 FT.	SOUND POWER	ROTOR WK^2	MAX. WK^2	SAFE STALL TIME	STARTS /HOUR	APPROX. MOTOR WGT
0 dBA	10 dBA	1.16 LB-FT^2	1.2 LB-FT^2	0 SEC.	0	0 LBS.

*** SUPPLEMENTAL INFORMATION ***

DE BRACKET TYPE	ODE BRACKET TYPE	MOUNT TYPE	ORIENTATION	SEVERE DUTY	HAZARDOUS LOCATION	DRIP COVER	SCREENS	PAINT
C-FACE	STANDARD	RIGID	HORIZONTAL	FALSE	NONE	FALSE	NONE	WHITE - LEESON (EPOXY)

BEARINGS		GREASE	SHAFT TYPE	SPECIAL DE	SPECIAL ODE	SHAFT MATERIAL	FRAME MATERIAL
DE	OPE						
BALL	BALL	POLYREX EM	T	NONE	NONE	303 STAINLESS (C-501)	ROLLED STEEL
6209	6206						

THERMO-PROTECTORS				THERMISTORS	CONTROL	SPACE /n HEATERS
THERMOSTATS	PROTECTORS	WDG RTDs	BRG RTDs			
NONE	NOT	NONE	NONE	NONE	FALSE	NONE VOLTS

If Inverter equals NONE, contact factory for further information

* N O T E S *	INVERTER TORQUE: CONSTANT 10:1
	INV. HP SPEED RANGE: NONE
	ENCODER: NONE NONE NONE NONE NONE PPR
	BRAKE: NONE NONE NONE P/N NONE NONE NONE - FT-LB NONE V NONE Hz

DATE: 06/23/2017 01:03:27 AM
 FORM 3531 REV.3 02/07/99
 ** Subject to change without notice.

Data Sheet

Date: 6/29/2017

Customer: _____

Attention: _____

Submitted by: FAREEDA DUDEKULA



215TTWD16026

Submittal

Data @ 460 V

Motor Load Data

Load	0%	25%	50%	75%	100%	115%	125%	LR	
Current (Amps)	7.2	7.7	9.0	11.0	13.2	14.8	15.9	81.0	
Torque (ft-lb)	0.00	7.3	14.8	22.3	29.9	34.5	37.6	76.0	
RPM	1800	1790	1780	1770	1760	1,754	1747	0	
Efficiency (%)		86.4	91.0	91.7	91.7	90.9	90.5		
P.F. (%)	4.8	35.4	57.2	69.6	77.5	80.1	81.3	42.0	

Motor Speed Data

	LR	Pull-Up	BD	Rated	Idle	Information Block																												
Speed (RPM)	0	900	1575	1760	1800	HP	10.0																											
Current (Amps)	81.0	78.0	51.0	13.2	7.2	Sync. RPM	1800																											
Torque (ft-lb)	76.0	70.0	90.0	29.9	0.00	Frame	215																											
<div><div>— Efficiency (%)</div><div>— P.F. (%)</div><div>— Current (Amps)</div><table><caption>Graph Data Points (Estimated)</caption><thead><tr><th>Load (%)</th><th>Efficiency (%)</th><th>P.F. (%)</th><th>Current (Amps)</th></tr></thead><tbody><tr><td>25</td><td>86</td><td>1.5</td><td>7.5</td></tr><tr><td>50</td><td>91</td><td>6.5</td><td>10.5</td></tr><tr><td>75</td><td>92</td><td>10.5</td><td>13.5</td></tr><tr><td>100</td><td>92</td><td>12.0</td><td>15.5</td></tr><tr><td>125</td><td>91</td><td>12.5</td><td>16.5</td></tr></tbody></table></div>						Load (%)	Efficiency (%)	P.F. (%)	Current (Amps)	25	86	1.5	7.5	50	91	6.5	10.5	75	92	10.5	13.5	100	92	12.0	15.5	125	91	12.5	16.5	Enclosure	TEFC			
						Load (%)	Efficiency (%)	P.F. (%)	Current (Amps)																									
						25	86	1.5	7.5																									
						50	91	6.5	10.5																									
						75	92	10.5	13.5																									
						100	92	12.0	15.5																									
						125	91	12.5	16.5																									
						Construction	TFW																											
						Voltage	230/460#190/381V																											
						Frequency	60 Hz																											
						Design	B																											
						LR Code letter	H																											
						Service Factor	1.15																											
						Temp Rise @ FL	65 °C																											
						Duty	CONT																											
						Ambient	40 °C																											
						Elevation	1,000 feet																											
Rotor/Shaft wk ²	1.10 Lb-Ft ²																																	
Ref Wdg	K2154513 NONE																																	
Sound Pressure @ 1M	62 dBA																																	
VFD Rating	CONSTANT 3:1																																	
Outline Dwg	037618-1200																																	
Conn. Diag	005010.01ME																																	
Additional Specifications:																																		
0																																		
0																																		
EQUIV CKT (OHMS / PHASE)																																		
R1		R2		X1		X2		Xm																										
0.5840		0.5050		1.7640		2.1360		36.0320																										

Speed -Torque Curve

