

PRODUCT INFORMATION PACKET

marathon®
Motors

Model No: 215TTTS17077

Catalog No: S510

Kiln Duty Motor, 5 HP, 3 Ph, 60 Hz, 460 V, 1200 RPM, 215T Frame, TEAO



Regal and Marathon are trademarks of Regal Rexnord Corporation or one of its affiliated companies.
©2022 Regal Rexnord Corporation, All Rights Reserved. MC017097E

RegalRexnord

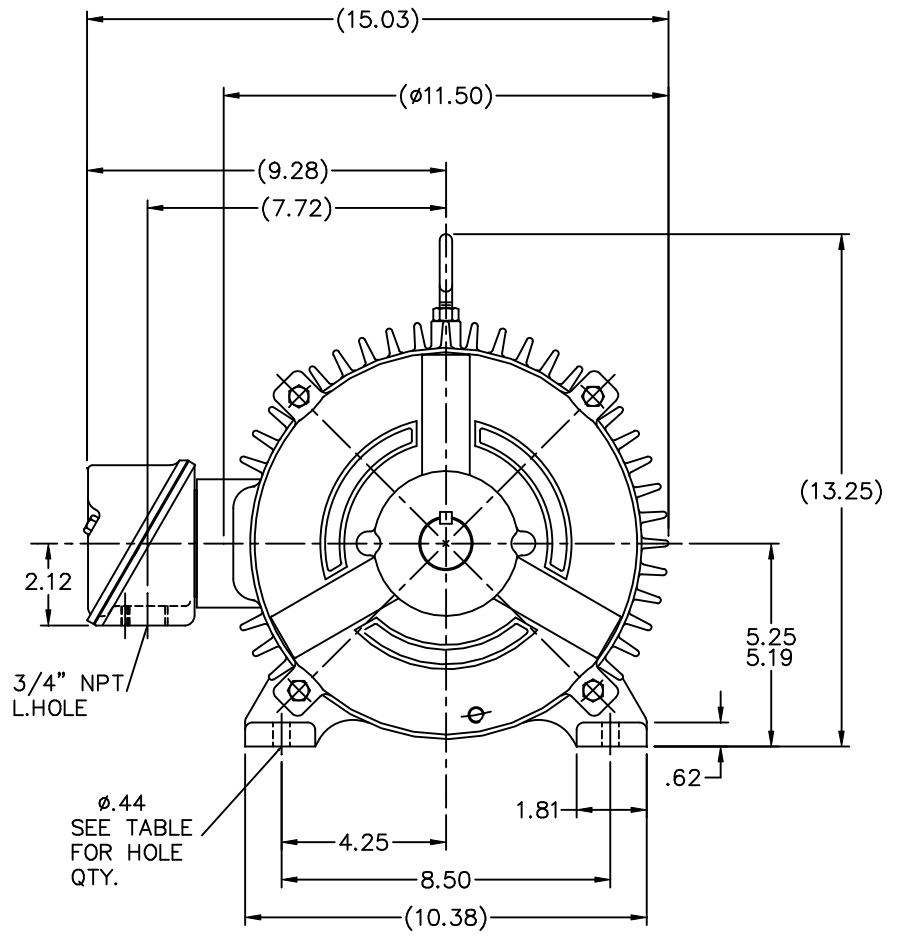
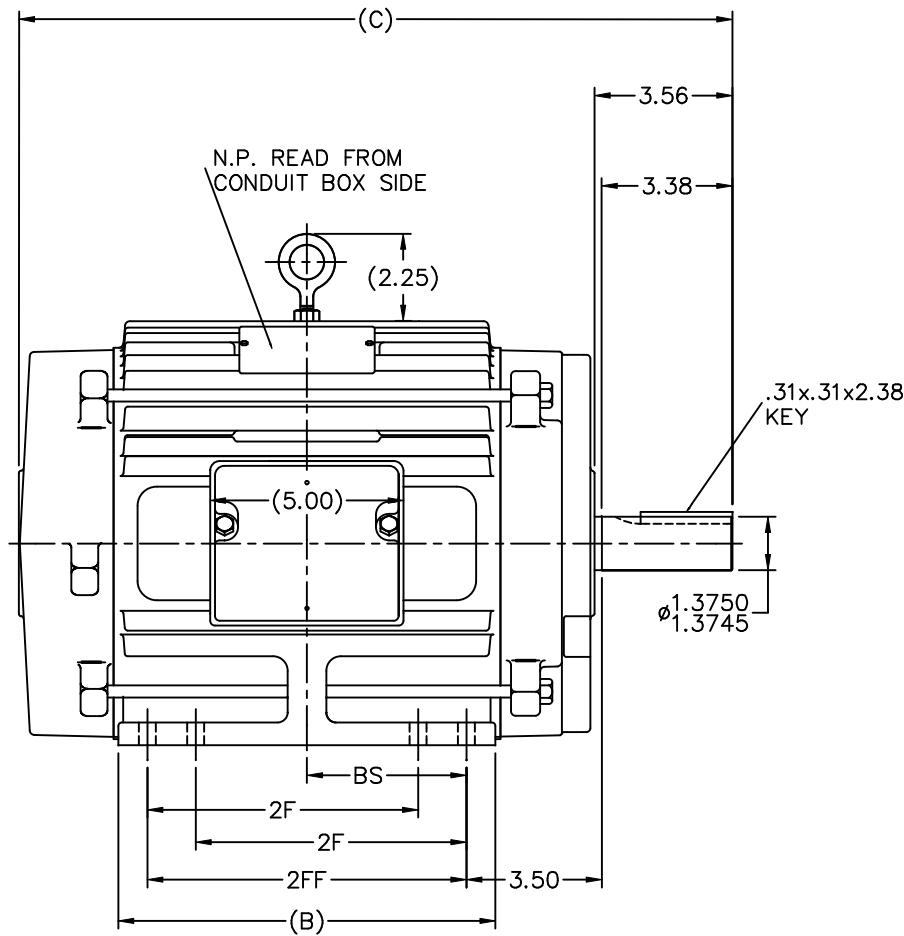


Nameplate Specifications

Output HP	5 Hp	Output KW	3.7 kW
Frequency	60 Hz	Voltage	460 V
Current	6.9 A	Speed	1170 rpm
Service Factor	1.15	Phase	3
Efficiency	87.5 %	Power Factor	77
Duty	Continuous	Insulation Class	H
Design Code	B	KVA Code	H
Frame	215T	Enclosure	Totally Enclosed Air Over
Thermal Protection	Thermostat	Ambient Temperature	90 °C
Drive End Bearing Size	6307	Opp Drive End Bearing Size	6206
UL	Recognized	CSA	Y
CE	N	IP Code	54
Number of Speeds	1		

Technical Specifications

Electrical Type	Squirrel Cage Inverter Rated	Starting Method	Line Or Inverter
Poles	6	Rotation	Reversible
Resistance Main	1.9 Ohms	Mounting	Rigid Base
Motor Orientation	Horizontal	Drive End Bearing	Ball / Heat Stabilized
Opp Drive End Bearing	Ball / Heat Stabilized	Frame Material	Cast Iron
Shaft Type	T	Overall Length	17.19 in
Frame Length	8.75 in	Shaft Diameter	1.375 in
Shaft Extension	3.56 in	Assembly/Box Mounting	F1/F2 CAPABLE
Inverter Load	VARIABLE 20:1		
Outline Drawing	B-SS85995-875	Connection Drawing	A-EE7300T



- NOTES:
 1. BOX CAN BE ROTATED IN 90° STEPS.
 2. BOX CAN BE MOUNTED ON OPPOSITE SIDE BY REMOVING BRACKETS AND TURNING FRAME 180°.

(REPLACES A-SS87840)

DASH	FRAME	B	2F	2FF	BS	C	FOOT HOLE QTY.	MOUNTING
725	213T	7.00	-	5.50	2.75	15.69	4	F1 OR F2
875	215T	8.50	-	7.00	3.50	17.19	4	F1 OR F2
875	213/5T	8.50	5.50	7.00	3.50	17.19	8	F1 OR F2
1000	213T	9.75	5.50	8.25	4.12	18.44	8	F1 OR F2
1000	215T	9.75	7.00	8.25	4.12	18.44	8	F1 OR F2

		TOLERANCES UNLESS SPECIFIED		MARATHON ELECTRIC		DRAWN BRH 06-17-1996	
8	CLARIFIED EXT. DIMENSION	MU43615	TAT	02-13-2004	ML	DEC.	INCHES
7	ADDED FOOT HOLE QTY. & MTG. TO TABLE	CN 37322	TAT	01-14-2004	ML	.X	±.1
6	FOOT HOLES WERE 4 NOW 8	CN 29200-450	DRS	05-16-2000	.XX	±.03	TITLE OUTLINE
5	REVISED CONDUIT BOX	CN 28426	NJS	01-18-2000	.XXX	±.005	210T FR. - TENV - CAST CONDUIT BOX
4	AD'D '213/15 MAY ONLY HAVE..' NOTE	CN 27400-361	BLR	08-31-1999	.XXXX	±.0005	MATL
NO.	REVISION	BY & DATE	CHK	ANG	±7'30"	FINISH	PREV
THIS DRAWING IN DESIGN AND DETAIL IS OUR PROPERTY AND MUST NOT BE USED EXCEPT IN CONNECTION WITH OUR WORK ALL RIGHTS OF DESIGN AND INVENTION ARE RESERVED THIS IS AN ELECTRONICALLY GENERATED DOCUMENT - DO NOT SCALE THIS PRINT						RFP	CAD FILE ss85995
						DIST	LB
						SIZE	DRAWING NO. PAGE OF REV.
						B	SS85995 8

ERROR: undefined
OFFENDING COMMAND: Pscript_WinNT_

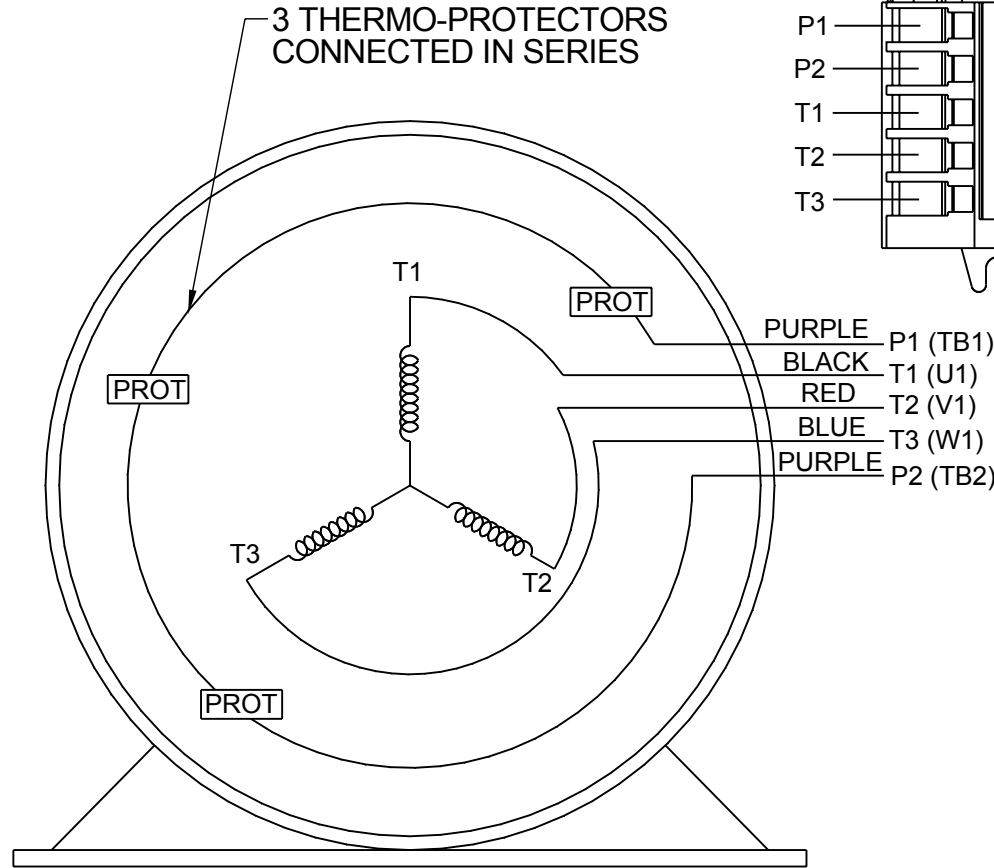
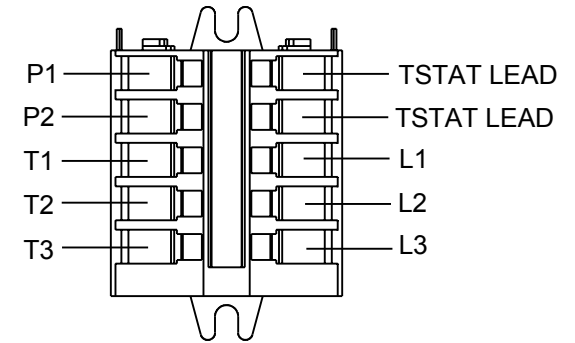
STACK:

**THREE PHASE - SINGLE VOLTAGE
MOTOR - CONDUIT BOX @ 'A'**

**TO REVERSE ROTATION:
INTERCHANGE ANY TWO LINE
LEAD CONNECTIONS**

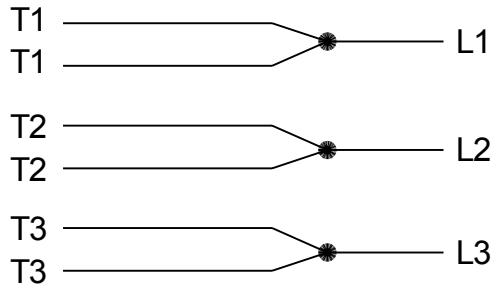
**NOTE FOR FACTORY USE ONLY:
TO SURGE TEST:
FOR 3 LEAD COMMON CONNECT:
CONNECT P1 TO T1 THEN P2 TO L1
FOR 6 LEAD COMMON CONNECT:
CONNECT P1 TO BOTH T1
THEN P2 TO L1**

TERMINAL BLOCK WHEN SPECIFIED



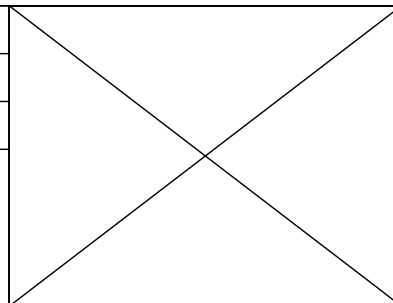
- T2BM
- T6AW
- T6AL
- T6Z
- T4EG
- T4BF
- T8A
- T6H
- T6A
- T4AX
- T4A
- T2A
- T2F

**IF MOTOR HAS MULTIPLE
T'S PER LEAD CONNECT
TOGETHER LIKE T'S**



A-9806 DECAL

DRAWING REVISION AB	REVISION BY AJW	DATE 07-17-2015
ECO ECO-0081632	APPROVED BY T.VUE	DATE 07-17-2015
ECO DESCRIPTION REV'D IEC MARKINGS PER IEC-60034-8		
<small>COPYRIGHT REGAL BELOIT AMERICA, INC. ALL RIGHTS RESERVED. PROPRIETARY AND CONFIDENTIAL INFORMATION - THIS DOCUMENT IS THE PROPERTY OF REGAL BELOIT AMERICA, INC. ("OWNER") AND CONTAINS OWNER'S PROPRIETARY INFORMATION. ANY PERSON, CORPORATION OR OTHER FIRM RECEIVING IT IS DEEMED, BY RECEIVING IT, TO AGREE THAT IT, AND/OR ANY PART OF IT, SHALL NOT BE DISCLOSED TO ANY PERSON, CORPORATION OR OTHER ENTITY, DUPLICATED, AND/OR USED, EXCEPT AS EXPRESSLY APPROVED IN WRITING IN ADVANCE BY OWNER. THIS DOCUMENT SHALL BE RETURNED TO OWNER UPON REQUEST. IT MAY BE SUBJECT TO CERTAIN RESTRICTIONS UNDER APPLICABLE EXPORT CONTROL LAWS AND REGULATIONS.</small>		



DRAWN BY LZ
DATE 01-04-1994
APPROVED BY GK
DATE 01-20-1994
REFERENCE
THIRD ANGLE PROJECTION

REGAL ™ Regal Beloit America, Inc.	
DESCRIPTION CONN DIAGRAM-EXTERNAL 3Ø-SINGLE VOLT-MOTOR WITH PROTECTOR	
MATERIAL	PROCESS/FINISH
SIZE A	DRAWING NUMBER EE7300T
SHEET 1 OF 1	

Data Sheet

Date: 6/29/2017

215TTTS17077

Customer: _____

Attention: _____

Submitted by: FAREEDA DUDEKULA



Submittal

Data @ 460 V

Motor Load Data

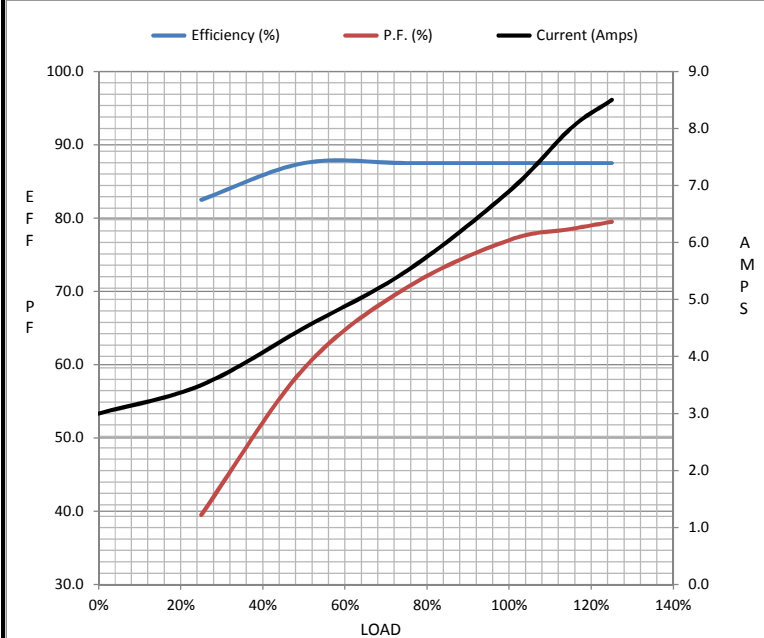
Load	0%	25%	50%	75%	100%	115%	125%	LR
Current (Amps)	3.0	3.5	4.5	5.5	6.9	8.0	8.5	44.0
Torque (ft-lb)	0.00	5.5	11.0	16.5	22.5	26.0	28.5	43.0
RPM	1200	1195	1185	1175	1170	1,165	1160	0
Efficiency (%)		82.5	87.5	87.5	87.5	87.5	87.5	
P.F. (%)	6.5	39.5	59.5	70.5	77.0	78.5	79.5	43.0

Motor Speed Data

	LR	Pull-Up	BD	Rated	Idle
Speed (RPM)	0	600	1030	1170	1200
Current (Amps)	44.0	40.0	30.0	6.9	3.0
Torque (ft-lb)	43.0	40.0	70.0	22.5	0.00

Information Block

HP	5.0			
Sync. RPM	1200			
Frame	215			
Enclosure	TEAO			
Construction	TTN			
Voltage	460 V			
Frequency	60 Hz			
Design	B			
LR Code letter	H			
Service Factor	1.15			
Temp Rise @ FL	45 ° C			
Duty	CONT AOM			
Ambient	40 ° C			
Elevation	1,000 feet			
Rotor/Shaft wk ²	0.95 Lb-Ft ²			
Ref Wdg	K2156100 R12			
Sound Pressure @ 1M	0 dBA			
VFD Rating	VARIABLE 20:1			
Outline Dwg	B-SS85995-875			
Conn. Diag	A-EE7300T			
Additional Specifications:				
0				
0				
EQUIV CKT (OHMS / PHASE)				
R1	R2	X1	X2	Xm
1.1360	1.1810	4.7880	5.2260	69.2960



Speed -Torque Curve

