

PRODUCT INFORMATION PACKET

Model No: 215TTTL17037
Catalog No: 215TTTL17037
20/20,1800,215TDZ,TEAO,3/60/460#/380-415

Regal and are trademarks of Regal Rexnord Corporation or one of its affiliated companies.
©2022 Regal Rexnord Corporation, All Rights Reserved. MC017097E



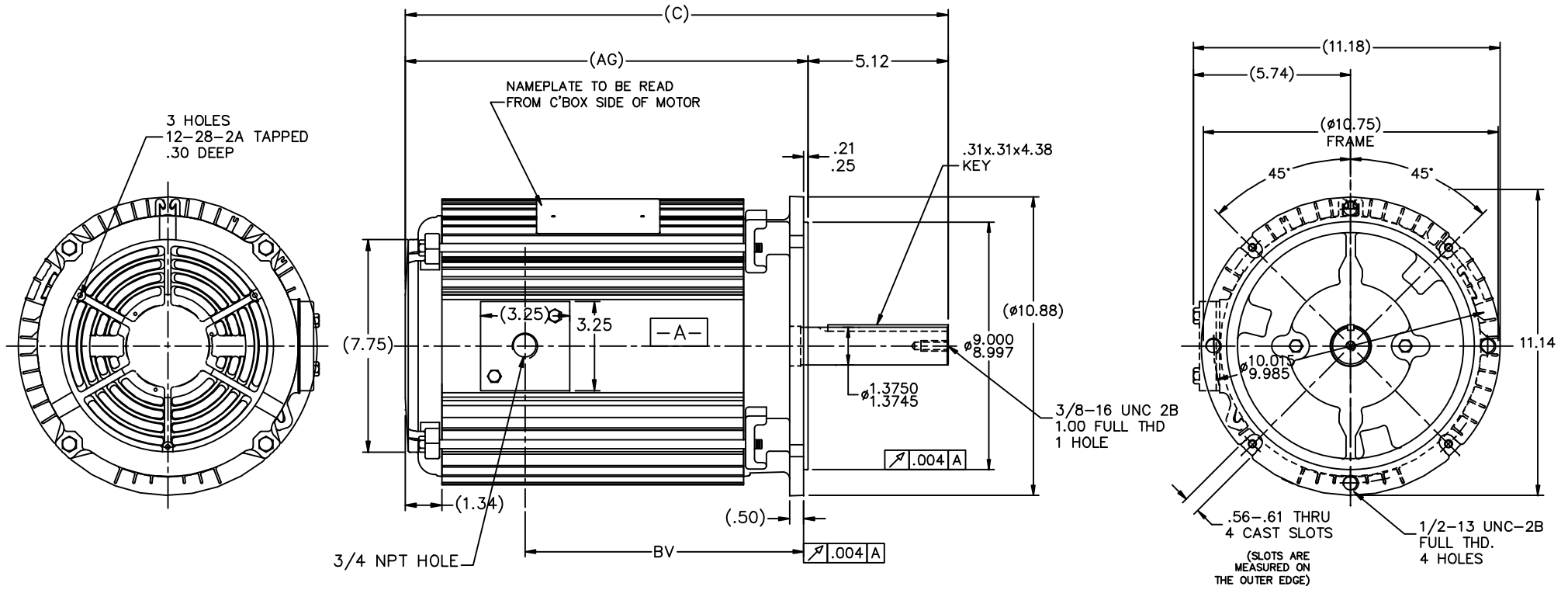
Nameplate Specifications

Output HP	20 Hp	Output KW	14.9 kW
Frequency	60 Hz	Voltage	460 V
Current	26.0 A	Speed	1755 rpm
Service Factor	1.15	Phase	3
Efficiency	88.5 %	Power Factor	81
Duty	Continuous	Insulation Class	F
Design Code	B	KVA Code	G
Frame	215TDVZ	Enclosure	Totally Enclosed Air Over
Thermal Protection	No Protection	Ambient Temperature	0 °C
Drive End Bearing Size	6208	Opp Drive End Bearing Size	6206
UL	Recognized	CSA	Y
CE	N	IP Code	43
Number of Speeds	1		

Technical Specifications

Electrical Type	Squirrel Cage Induction Run	Starting Method	Wye Start Delta Run
Poles	4	Rotation	Reversible
Resistance Main	.484 Ohms	Mounting	Round
Motor Orientation	Horizontal Or Shaft Down	Drive End Bearing	Ball
Opp Drive End Bearing	Ball	Frame Material	Aluminum
Shaft Type	Single Special Extension	Assembly/Box Mounting	F1/F2 CAPABLE
Outline Drawing	SS89620-1275	Connection Drawing	EE7340

This is an uncontrolled document once printed or downloaded and is subject to change without notice. Date Created:10/13/2022



NOTES:

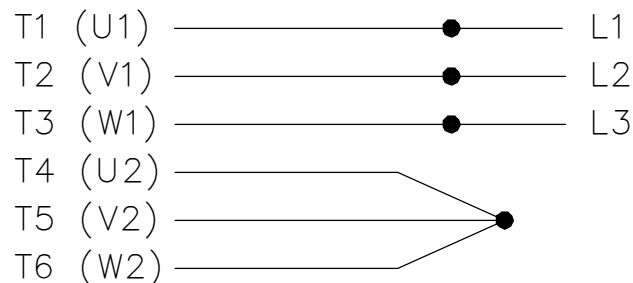
1. NAMEPLATE TO BE READ FROM CONDUIT BOX SIDE OF MOTOR.

DASH	FRAME	BV	C	AG
1100	210TDZ	10.42	19.79	14.67
1275	210TDZ	12.17	21.54	16.42

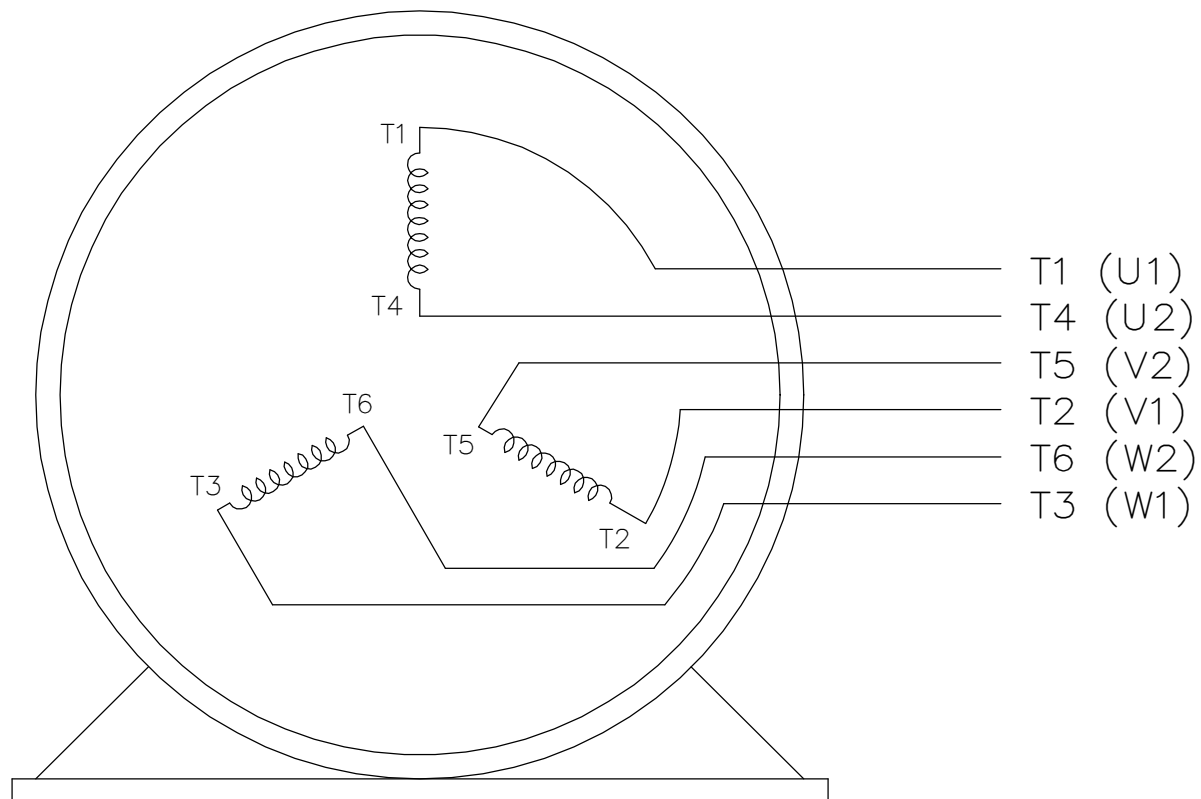
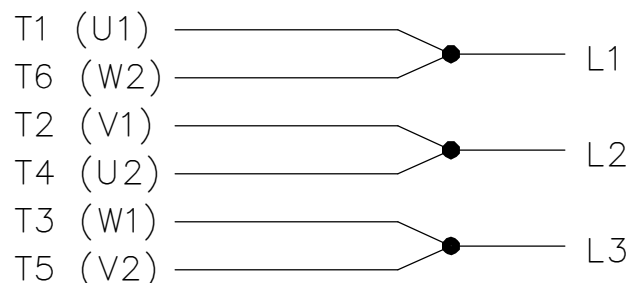
				TOLERANCES UNLESS SPECIFIED		MARATHON ELECTRIC	DRAWN AK 04-20-2009			
				DEC.	INCHES		CHK	SVL	04-20-2009	
				.X	±.1					
				.XX	±.03					
				.XXX	±.005					
1	REMOVED LIFT LUGS	ISAAC 12-2766	WGJ 06-21-2012	EMH	.XXXX ±.0005	TITLE OUTLINE 210TDZ FRAME - TENV - D FLANGE	APPD	AK	04-20-2009	
NO.	REVISION	BY & DATE	CHK	ANG	±7'30"	MAT'L	REF	B-SS330215	FMF	
THIS DRAWING IN DESIGN AND DETAIL IS OUR PROPERTY AND MUST NOT BE USED EXCEPT IN CONNECTION WITH OUR WORK ALL RIGHTS OF DESIGN AND INVENTION ARE RESERVED THIS IS AN ELECTRONICALLY GENERATED DOCUMENT - DO NOT SCALE THIS PRINT						FINISH	PREV	SS330211		
						RFP	CAD FILE ss89620	SIZE	DRAWING NO.	PAGE OF
						DIST LB		B	ss89620	1

THREE PHASE
WYE START DELTA RUN

START



RUN



VIEW OF TERMINAL END

NOTE:
IEC LEAD MARKINGS ARE NOTED
IN PARANTHESES

DRAWING REVISION F	REVISION BY RTT	REV DATE/© DATE 05-29-2019	TOLERANCES (EXCEPT AS NOTED): <div>DEC. INCH mm ANGLE</div> <div>.X ±0.1 [±3] ±7° 30"</div> <div>.XX ±0.02 [±0.5]</div> <div>.XXX ±0.005 [±0.13]</div> <div>.XXXX ±0.0005 [±0.013]</div> <div>REMOVE BURRS & BREAK SHARP</div> <div>EDGES: .003/.015 [.08/.38] X 45 °</div> <div>CORNER FILLETS: R.02 [.5]</div> <div>MACHINED SURFACES: 200/ 5.1</div> <div>INCH mm</div> <div>mm DIMENSIONS IN [BRACKETS]</div> <div>ARE FOR REFERENCE ONLY</div>	DRAWN BY LZ	<div><div>REGAL®</div><div>Regal Beloit America, Inc.</div></div>		
ECO ECO-0167538	APPROVED BY JWA	DATE 05-29-2019		DATE 01-06-1994	<div>DESCRIPTION</div> <div>CONNECTION DIAGRAM</div> <div>3<MOD-DIAM> - WYE START DELTA RUN</div>		
ECO DESCRIPTION				APPROVED BY GK			
UPDATED TITLE BLOCK				DATE 01-18-1994	<div>MATERIAL</div> <div>PROCESS/FINISH</div>		
COPYRIGHT (PER REVISION DATE) REGAL BELOIT AMERICA, INC. ALL RIGHTS RESERVED. PROPRIETARY AND CONFIDENTIAL INFORMATION - THIS DOCUMENT IS THE PROPERTY OF REGAL BELOIT AMERICA, INC. ("OWNER") AND CONTAINS OWNER'S PROPRIETARY INFORMATION. ANY PERSON, CORPORATION OR OTHER FIRM RECEIVING IT IS DEEMED, BY RECEIVING IT, TO AGREE THAT IT, AND/OR ANY PART OF IT, SHALL NOT BE DISCLOSED TO ANY PERSON, CORPORATION OR OTHER ENTITY, DUPLICATED, AND/OR USED, EXCEPT AS EXPRESSLY APPROVED IN WRITING IN ADVANCE BY OWNER. THIS DOCUMENT SHALL BE RETURNED TO OWNER UPON REQUEST. IT MAY BE SUBJECT TO CERTAIN RESTRICTIONS UNDER APPLICABLE EXPORT CONTROL LAWS AND REGULATIONS.				REFERENCE			
			THIRD ANGLE PROJECTION	<div>SIZE A</div>	<div>DRAWING NUMBER</div> <div>EE7340</div>	<div>SHEET</div> <div>1 OF 1</div>	