

# PRODUCT INFORMATION PACKET



Model No: 215TTGN16509  
Catalog No: 215TTGN16509  
10,3600,EPFC,215T,3/60/230/460

Regal and Marathon are trademarks of Regal Rexnord Corporation or one of its affiliated companies.  
©2024 Regal Rexnord Corporation, All Rights Reserved. MC017097E



**Nameplate Specifications**

Phase	3	Output HP	10 Hp
Output KW	7.5 kW	Voltage	230/460 V
Speed	3535 rpm	Service Factor	1.15
Frame	215T	Enclosure	Explosion Proof Fan cooled
Thermal Protection	Thermostat	Efficiency	91.7 %
Ambient Temperature	40 °C	Frequency	60 Hz
Current	23.6/11.8 A	Power Factor	87
Duty	Continuous	Insulation Class	F
Design Code	B	KVA Code	H
Drive End Bearing Size	6307	Opp Drive End Bearing Size	6208
UL	No	CSA	N
CE	N	IP Code	54
Number of Speeds	1	Hazardous Location	EXP PROOF CL I GR C&D CL II GR F&G T3B

**Technical Specifications**

Electrical Type	Squirrel Cage Inverter Rated	Starting Method	Line Or Inverter
Poles	2	Rotation	Reversible
Resistance Main	.8 Ohms	Mounting	Rigid Base
Motor Orientation	Horizontal	Drive End Bearing	Ball
Opp Drive End Bearing	Ball	Frame Material	Cast Iron
Shaft Type	T	Assembly/Box Mounting	F1 ONLY
Outline Drawing	037660-1212	Connection Drawing	A-EE7308BT

This is an uncontrolled document once printed or downloaded and is subject to change without notice. Date Created:09/07/2024

4

3

Uncontrolled Copy

2

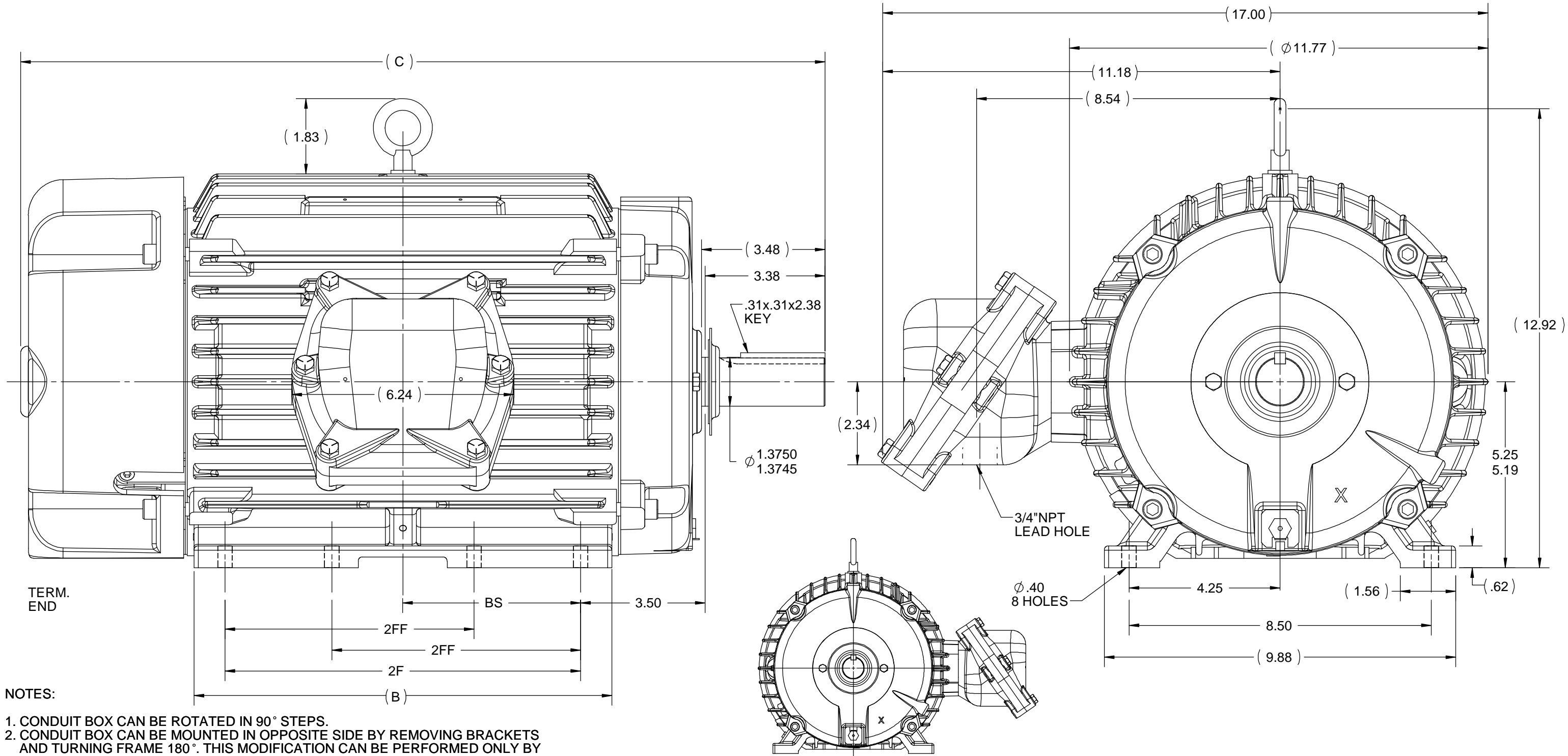
1

B

B


A

A



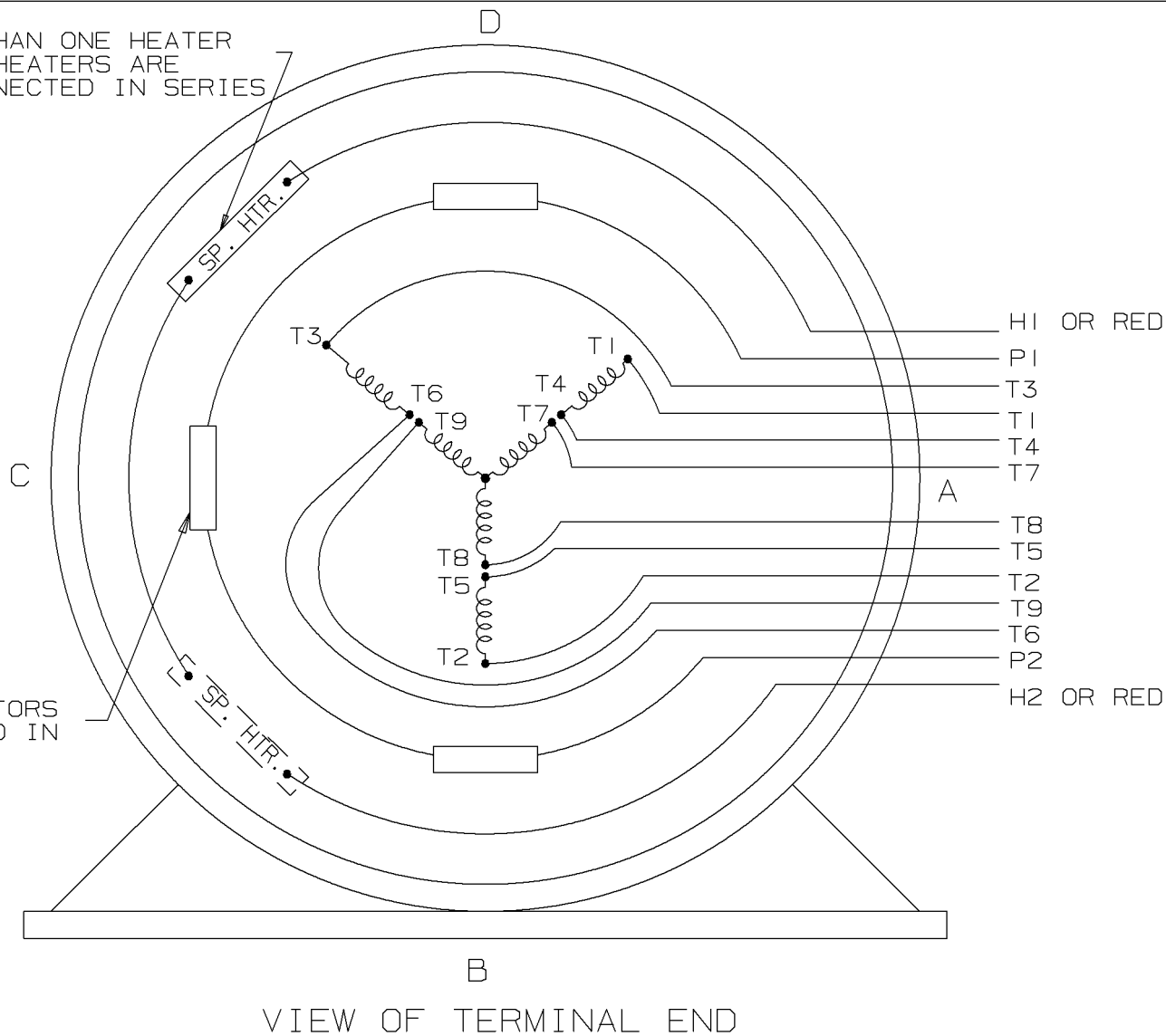
- NOTES:
1. CONDUIT BOX CAN BE ROTATED IN 90° STEPS.
  2. CONDUIT BOX CAN BE MOUNTED IN OPPOSITE SIDE BY REMOVING BRACKETS AND TURNING FRAME 180°. THIS MODIFICATION CAN BE PERFORMED ONLY BY THE ORIGINAL EQUIPMENT MANUFACTURER, OR BY A FACILITY THAT IS COVERED UNDER UNDERWRITERS LABORATORIES INC. CATEGORY PTKQ, TITLED "MOTOR AND GENERATORS,. REBUILT FOR USE IN HAZARDOUS LOCATION".
  3. NAMEPLATE TO BE READ FROM CONDUIT BOX SIDE OF MOTOR.

1212	215	22.63	11.76	10	7	5
912	213/215	19.63	8.63	7	5.5	3.5
DASH	FRAME	C	B	2F	2FF	BS

DRAWING REVISION G	REVISION BY MVG	DATE 02/08/2019	TOLERANCES UNLESS OTHERWISE SPECIFIED:				DRAWN BY AK 10/28/2009	 Regal Beloit America, Inc.		
ECO ECO-0139404	APPROVED BY SR	DATE 02/08/2019	DEC.	INCH	mm	ANGLE	DATE			
ECO DESCRIPTION OUTLINE UPDATED AS PER ECR-0149056			.X	±0.1	[±2.5]	±7° 30"	APPROVED BY	DESCRIPTION OUTLINE		
COPYRIGHT REGAL BELOIT AMERICA, INC. ALL RIGHTS RESERVED. PROPRIETARY AND CONFIDENTIAL INFORMATION - THIS DOCUMENT IS THE PROPERTY OF REGAL BELOIT AMERICA, INC. ("OWNER") AND CONTAINS OWNER'S PROPRIETARY INFORMATION. ANY PERSON, CORPORATION OR OTHER FIRM RECEIVING IT IS DEEMED, BY RECEIVING IT, TO AGREE THAT IT, AND/OR ANY PART OF IT, SHALL NOT BE DISCLOSED TO ANY PERSON, CORPORATION OR OTHER ENTITY, DUPLICATED, AND/OR USED, EXCEPT AS EXPRESSLY APPROVED IN WRITING IN ADVANCE BY OWNER. THIS DOCUMENT SHALL BE RETURNED TO OWNER UPON REQUEST. IT MAY BE SUBJECT TO CERTAIN RESTRICTIONS UNDER APPLICABLE EXPORT CONTROL LAWS AND REGULATIONS.			.XX	±0.03	[±0.76]		DATE	210 FR. - EPFC		
			.XXX	±0.005	[±0.127]		REFERENCE SS84370	MATERIAL		PROCESS/FINISH
			.XXXX	±0.0005	[±0.0127]		THIRD ANGLE PROJECTION	SIZE B	DRAWING NUMBER 037660	SHEET 1 OF 1
			REMOVE BURRS & BREAK SHARP EDGES: .003/.015 [.076/.381] X 45° CORNER FILLETS: R.02 [.51] MACHINED SURFACES: 200 INCH/mm 5.1 mm SHOWN IN [BRACKETS]							

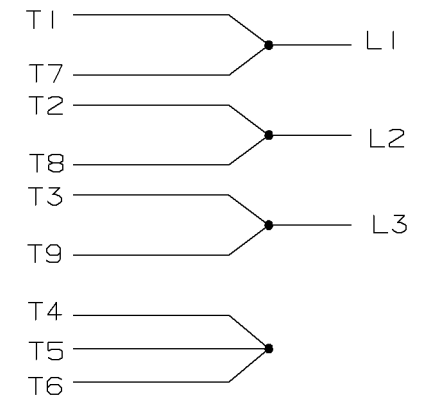
NOTE:  
IF MORE THAN ONE HEATER  
IS USED, HEATERS ARE  
TO BE CONNECTED IN SERIES

NOTE:  
3 PROTECTORS  
CONNECTED IN  
SERIES

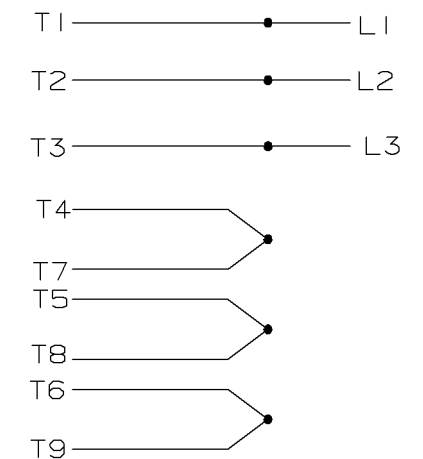



A- EE7308BT

## LOW VOLTAGE



## HIGH VOLTAGE



				<div>✓</div> <div>MAX. SURFACE ROUGHNESS UNLESS NOTED OTHERWISE</div>	UNLESS OTHERWISE SPECIFIED DIMENSIONS ARE IN INCHES TOL. ON XX±.020    XXX±.005    XXXX±.0005    ANGLES± 7°30"				
				MATL SPEC			DRAWN BY PGK	09-18-1996	
				FINISH			CHKD BY KL	10-01-1996	
2	10-01-1996	REDRAWN ON CADD & REVISE TO HAVE LEADS FOR HEATER MARK HI OR H2    CN 22696	PGK	REFERENCE DRW.	WAUSAU, WISCONSIN 54401		APPD BY ML	10-01-1996	
REV	DATE	CHANGE	NAME	PART NAME    CONNECTION DIAGRAM THREE PHASE - DUAL VOLTAGE MOTOR				DRWG NO A - EE7308BT	
		SHOP BOOK	PURCHASED	DISTRIBUTION - WA - LB - WP - LM - BR			CADD FILE NO.	EE7308BT	

SHOP BOOK

PURCHASED

DISTRIBUTION - WA - LB - WP - LM - BR

CADD FILE NO.

EE7308BT