

# PRODUCT INFORMATION PACKET

Model No: 215TTFW7088

Catalog No: M880

Other Purpose Motor, 5 HP, 3 Ph, 60 Hz, 230/460 V, 1200 RPM, 215HPV Frame, TEFC

Regal and are trademarks of Regal Rexnord Corporation or one of its affiliated companies.  
©2022 Regal Rexnord Corporation, All Rights Reserved. MC017097E

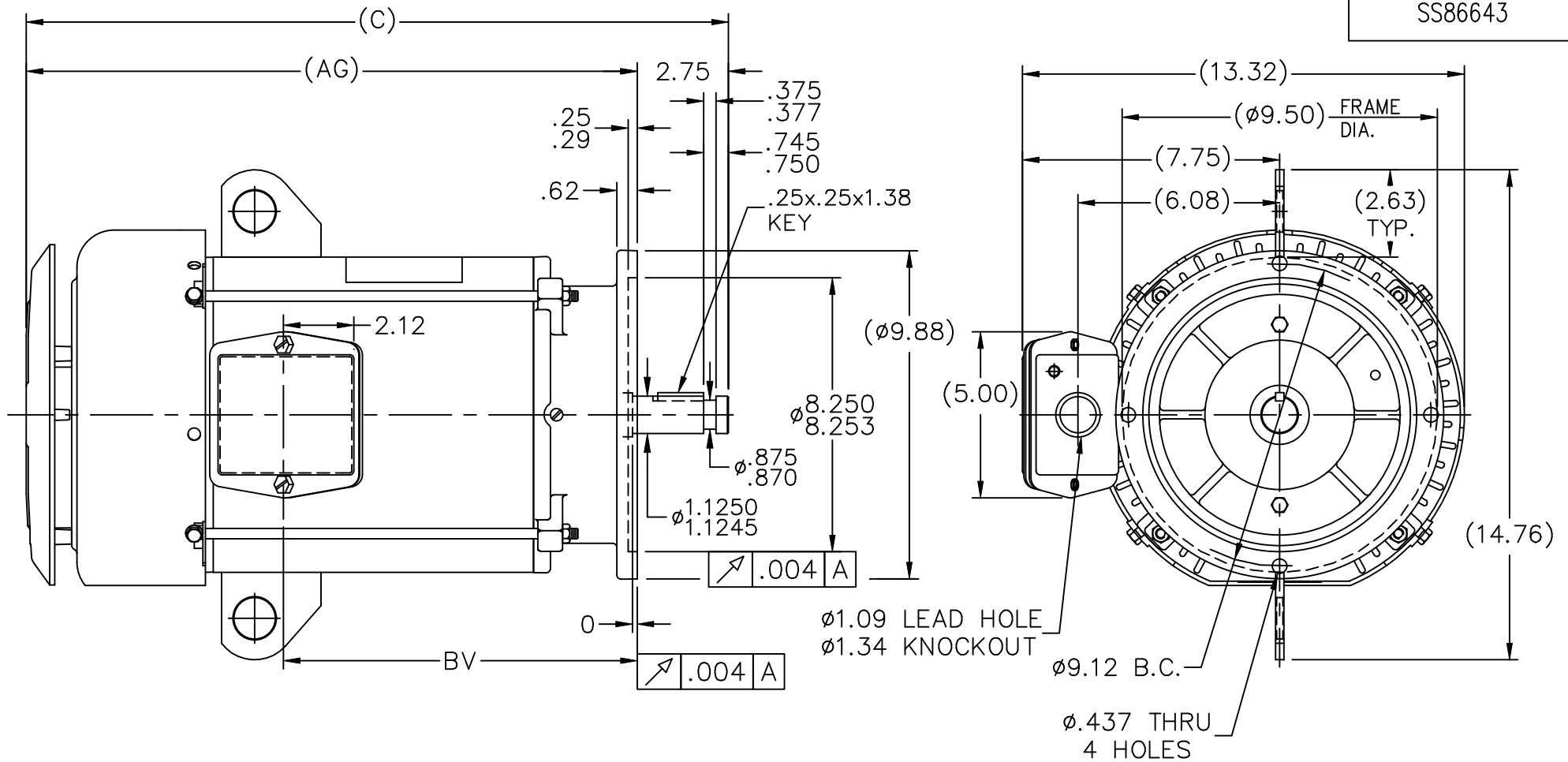


**Nameplate Specifications**

|                        |                      |                            |                                    |
|------------------------|----------------------|----------------------------|------------------------------------|
| Output HP              | <b>5 Hp</b>          | Output KW                  | <b>3.7 kW</b>                      |
| Frequency              | <b>60 Hz</b>         | Voltage                    | <b>230/460 V</b>                   |
| Current                | <b>14.8/7.4 A</b>    | Speed                      | <b>1155 rpm</b>                    |
| Service Factor         | <b>1.15</b>          | Phase                      | <b>3</b>                           |
| Efficiency             | <b>84 %</b>          | Power Factor               | <b>75.5</b>                        |
| Duty                   | <b>Continuous</b>    | Insulation Class           | <b>F</b>                           |
| Design Code            | <b>B</b>             | KVA Code                   | <b>J</b>                           |
| Frame                  | <b>215HPV</b>        | Enclosure                  | <b>Totally Enclosed Fan Cooled</b> |
| Thermal Protection     | <b>No Protection</b> | Ambient Temperature        | <b>40 °C</b>                       |
| Drive End Bearing Size | <b>6309</b>          | Opp Drive End Bearing Size | <b>6206</b>                        |
| UL                     | <b>Recognized</b>    | CSA                        | <b>Y</b>                           |
| CE                     | <b>Y</b>             | IP Code                    | <b>43</b>                          |
| Number of Speeds       | <b>1</b>             |                            |                                    |

**Technical Specifications**

|                       |                                    |                       |                                     |
|-----------------------|------------------------------------|-----------------------|-------------------------------------|
| Electrical Type       | <b>Squirrel Cage Induction Run</b> | Starting Method       | <b>Part Wdg Start Low Volt Only</b> |
| Poles                 | <b>6</b>                           | Rotation              | <b>Reversible</b>                   |
| Resistance Main       | <b>2.68 Ohms</b>                   | Mounting              | <b>Round</b>                        |
| Motor Orientation     | <b>Shaft Down</b>                  | Drive End Bearing     | <b>Ball</b>                         |
| Opp Drive End Bearing | <b>Ball</b>                        | Frame Material        | <b>Rolled Steel</b>                 |
| Shaft Type            | <b>HP</b>                          | Overall Length        | <b>22.66 in</b>                     |
| Frame Length          | <b>11.15 in</b>                    | Shaft Diameter        | <b>1.125 in</b>                     |
| Shaft Extension       | <b>2.75 in</b>                     | Assembly/Box Mounting | <b>F1/F2 CAPABLE</b>                |
| Outline Drawing       | <b>A-SS86643-1115</b>              | Connection Drawing    | <b>A-EE7308EK</b>                   |

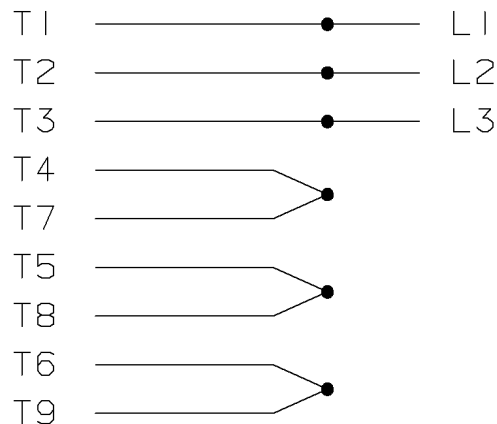


| DASH | FR.     | C     | AG    | BV    |
|------|---------|-------|-------|-------|
| 965  | 213T    | 21.16 | 18.41 | 10.66 |
| 1115 | 213/15T | 22.66 | 19.91 | 12.16 |
| 1240 | 213/15T | 23.91 | 21.16 | 13.41 |

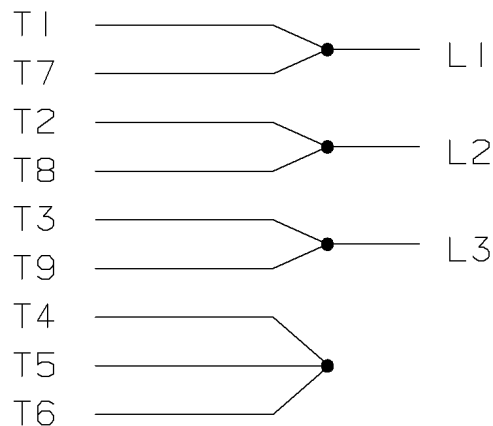
- NOTES:
- NAMEPLATE TO BE READ FROM SHAFT EXT. END OF MOTOR.
  - BOX CAN BE MOUNTED IN 90° STEPS.

| NO.  | REVISION                                       | BY & DATE      | CHK | ANG        | TOLERANCES UNLESS SPECIFIED |                  | MARATHON ELECTRIC  | DRAWN MRB 11-05-1996 |        |                     |         |        |
|--|--|----------------|-----|------------|-----------------------------|------------------|--|----------------------|--------|---------------------|---------|--------|
|  |  |                |     |            | DEC.                        | INCHES           |  |                      |        |                     |         |        |
| 7  | UPDATED DRAWING                                | TJW 04/30/2007 |     |            | DEC.                        | INCHES           | TITLE OUTLINE<br>210T FR.-TEFC-P' BASE-R/S FRAME<br><br>MAT'L.<br><br>FINISH | CHK ML 11-07-1996    |        |                     |         |        |
| 6  | REDRAWN IN AUTOCAD                             | TAT 07-22-2004 | ML  | .X         |                             |                  |  | APPD DN 11-08-1996   |        |                     |         |        |
| 5  | ADDED $\phi 9.12$ B.C. & $\phi .437$ (4) HOLES | CN 29200-1501  | HLB | 02-27-2001 | .XX                         | $\pm .03$        |  | SCALE 7=32           |        |                     |         |        |
| 4  | UPDATED C' BOX GEOMETRY                        | CN 28425       | DRS | 01-31-2000 | .XXX                        | $\pm .005$       |  | REF                  |        |                     |         |        |
| 3  | REMOVED GROUND SCREW FROM FRAME                | CN 24453       | MJD | 10-01-1997 | .XXXX                       | $\pm .0005$      |  | FMF                  |        |                     |         |        |
|  |  |                |     |            |                             | $\pm 7'30''$     |  | PREV                 |        |                     |         |        |
| THIS DRAWING IN DESIGN AND DETAIL IS OUR PROPERTY AND MUST NOT BE USED EXCEPT IN CONNECTION WITH OUR WORK ALL RIGHTS OF DESIGN AND INVENTION ARE RESERVED THIS IS AN ELECTRONICALLY GENERATED DOCUMENT - DO NOT SCALE THIS PRINT |  |                |     |            | RFP                         | CAD FILE ss86643 |  |                      | SIZE A | DRAWING NO. SS86643 | PAGE OF | REV. 7 |
|  |  |                |     |            | DIST LB                     |                  |  |                      |        |                     |         |        |

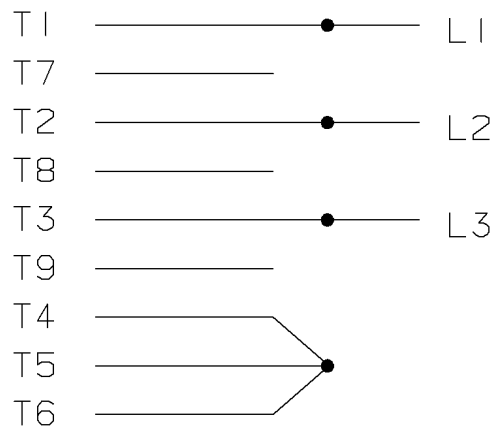
RUN - HIGH VOLTAGE



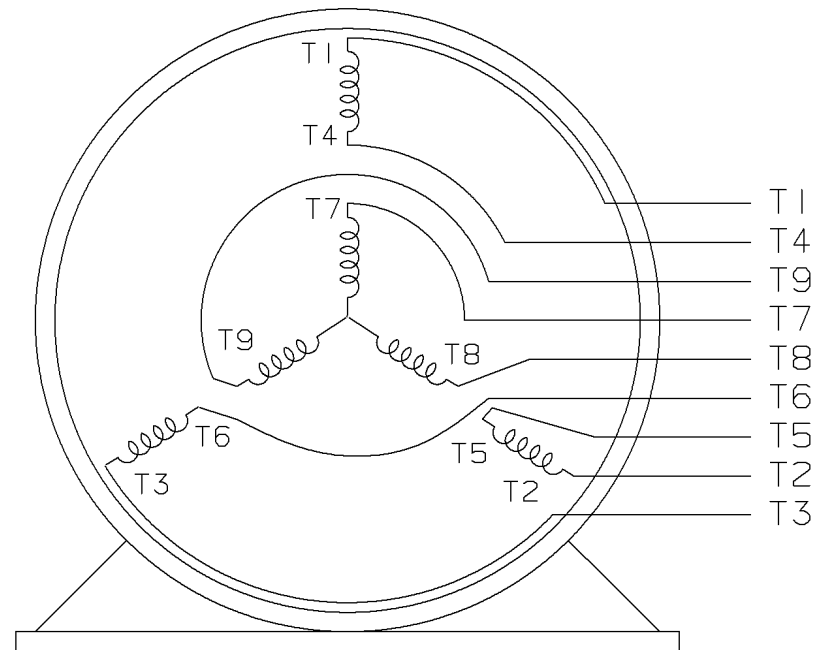
RUN - LOW VOLTAGE



START - LOW VOLTAGE



THREE PHASE  
DUAL VOLTAGE MOTOR



VIEW OF TERMINAL END

REF.  
WINDING DIAGRAM

T8Y, T2Y, T2BL, T4BX, T2EC, T2G, T8M  
T6BZ, T2B, T6BL, T4AV, T6B, T4B

|  |                           |         |     |            |           | TOLERANCES UNLESS SPECIFIED |   | REGAL-BELOIT <i>Motor Technologies</i> |           | DRAWN HLB 03-06-2001 |               |             |      |
|--|---------------------------|---------|-----|------------|-----------|-----------------------------|---|--|-----------|----------------------|---------------|-------------|------|
|  |                           |         |     |            |           | DEC.                        | TOLERANCE   |  |           | CHK                  | ML 03-19-2001 |             |      |
|  |                           |         |     |            |           | .X                          | ± .1  |  |           | APPD                 | GK 03-20-2001 |             |      |
|  |                           |         |     |            |           | .XX                         | ± .02   | TITLE CONNECTION DIAGRAM               |           | SCALE                |               |             |      |
| 2  | ADDED T8M WINDING DIAGRAM | MU41675 | CAV | 05-15-2002 | ML        | .XXX                        | ± .005  | 3Ø DUAL VOLTAGE MOTOR 9 LEADS          |           | REF                  |               |             |      |
| 1  | NEW DRAWING MU36218       |         | HLB | 03-20-2001 | ML        | .XXXX                       | ± .0005   | ✓ SURFACE ROUGHNESS UNLESS SPECIFIED   | MAT'L.    | FMF                  |               |             |      |
| NO.  | REVISION                  |         | BY  | DATE       | CHK       | ANG                         | ± 7'30"   | FINISH                                 |           | PREV                 |               |             |      |
| THIS DRAWING IN DESIGN AND DETAIL IS OUR PROPERTY AND MUST NOT BE USED EXCEPT IN CONNECTION WITH OUR WORK. ALL RIGHTS OF DESIGN AND INVENTION ARE RESERVED. THIS IS AN ELECTRONICALLY GENERATED DOCUMENT - DO NOT SCALE THIS PRINT |                           |         |     |            | PURCHASED |                             | CAD FILE EE7308EK   |  | SHOP BOOK |                      | SIZE          | DRAWING NO. | REV. |
|  |                           |         |     |            | DIST      |                             | <del>WA</del> - <del>LB</del> - <del>WC</del> - <del>XM</del> - <del>BR</del> - <del>BY</del> |  | A         |                      | EE7308EK      |             | 2    |