

PRODUCT INFORMATION PACKET



Model No: 215TTFW7047

Catalog No: M412

Other Purpose Motor, 10 & 7.50 HP, 3 Ph, 60 & 50 Hz, 208-230/460 & 190/380 V, 1800 & 1500 RPM,
215JM Frame, TEFC

Regal and Marathon are trademarks of Regal Rexnord Corporation or one of its affiliated companies.

©2023 Regal Rexnord Corporation, All Rights Reserved. MC017097E

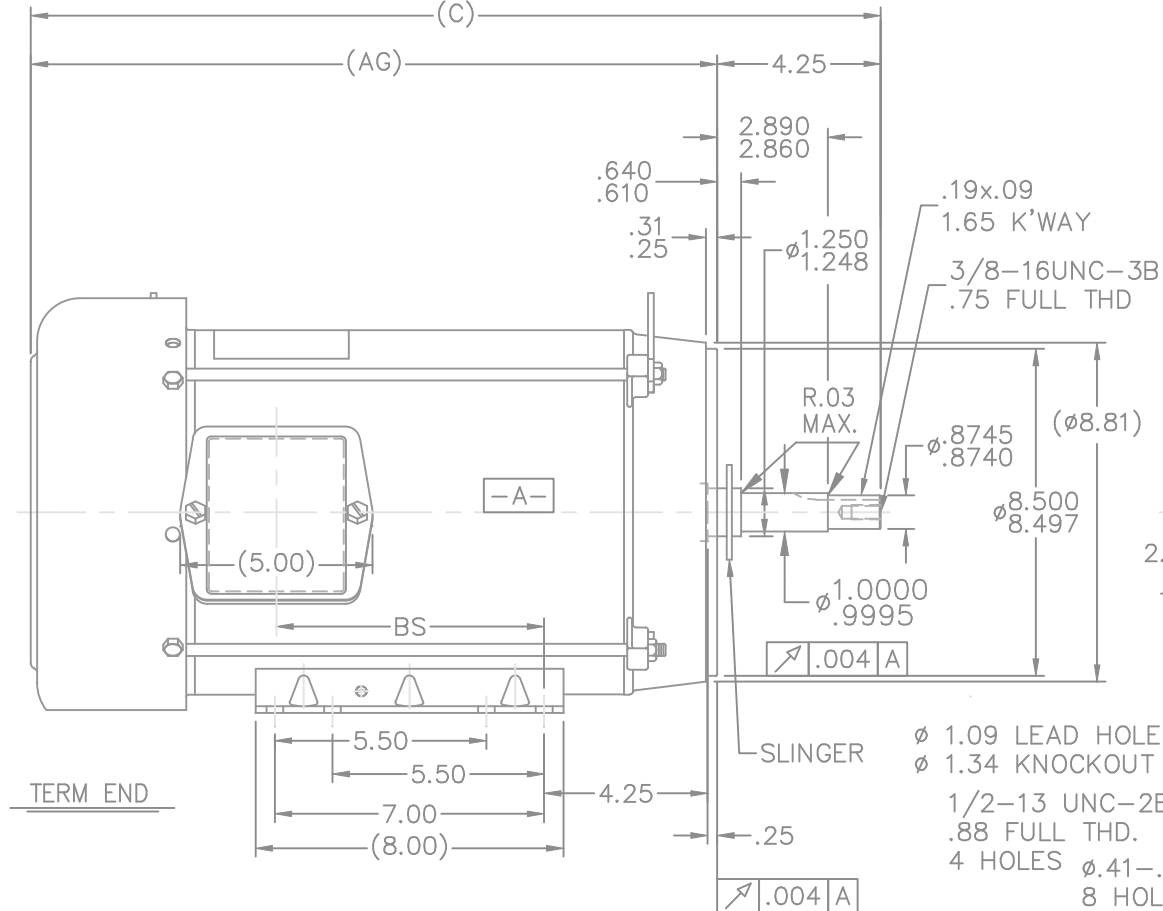


Nameplate Specifications

| | | | |
|------------------------|--------------------------|----------------------------|-----------------------------|
| Phase | 3 | Output HP | 10 & 7.50 Hp |
| Output KW | 7.5 & 5.6 kW | Voltage | 208-230/460 & 190/380 V |
| Speed | 1740 & 1450 rpm | Service Factor | 1.15 & 1.15 |
| Frame | 215JM | Enclosure | Totally Enclosed Fan Cooled |
| Thermal Protection | No Protection | Efficiency | 88.5 & 87.5 % |
| Ambient Temperature | 40 °C | Frequency | 60 & 50 Hz |
| Current | 28-25/12.5 & 23.2/11.6 A | Power Factor | 83.5 |
| Duty | Continuous | Insulation Class | F |
| Design Code | B | KVA Code | H |
| Drive End Bearing Size | 6309 | Opp Drive End Bearing Size | 6206 |
| UL | Recognized | CSA | Y |
| CE | Y | IP Code | 43 |
| Number of Speeds | 1 | | |

Technical Specifications

| | | | |
|-----------------------|-----------------------------|-----------------------|-----------------|
| Electrical Type | Squirrel Cage Induction Run | Starting Method | Across The Line |
| Poles | 4 | Rotation | Reversible |
| Resistance Main | 1.2 Ohms | Mounting | Rigid Base |
| Motor Orientation | Horizontal | Drive End Bearing | Ball |
| Opp Drive End Bearing | Ball | Frame Material | Rolled Steel |
| Shaft Type | JM | Overall Length | 22.09 in |
| Frame Length | 11.15 in | Shaft Diameter | 0.875 in |
| Shaft Extension | 4.25 in | Assembly/Box Mounting | F1/F2 Capable |
| Outline Drawing | A-SS86629-1115 | Connection Drawing | A-EE7308 |



| DASH | FR. | C | AG | BS | MOUNTING |
|------|---------|-------|-------|------|----------|
| 965 | 213T | 20.59 | 16.34 | 5.43 | |
| 1115 | 213/15T | 22.09 | 17.84 | 6.93 | |
| 1240 | 213/15T | 23.34 | 19.09 | 8.18 | F1 ONLY |

NOTES:

1. NAMEPLATE TO BE READ FROM C'BOX SIDE OF MOTOR.
2. BOX CAN BE MOUNTED IN 90° STEPS.
3. BOX CAN BE MOUNTED ON OPPOSITE SIDE BY REMOVING BRACKETS AND TURNING FRAME 180°. (EXCEPT AS NOTED.)

| | | | | | |
|-----|---|----------------|-----|--------------------------------|---------|
| 6 | UPDATED DRAWING | TJW 04/30/2007 | | TOLERANCES UNLESS SPECIFIED | |
| 5 | REDRAWN IN AUTOCAD | TAT 07-06-2004 | ML | DEC. | INCHES |
| 4 | UPDATED C' BOX GEOMETRY CN 28425 | DRS 01-14-2000 | | .X | ±.1 |
| 3 | REVISED MOUNTING HOLES ON C' FACE WAS .75 | MJD 06-18-1998 | | .XX | ±.03 |
| | FULL THREAD CN 25600-210 | | | .XXX | ±.005 |
| 2 | REMOVED GRD. SCREW FROM FRAME CN 24453 | MJD 10-01-1997 | | .XXXX | ±.0005 |
| NO. | REVISION | BY & DATE | CHK | ANG | ± 7'30" |



| | |
|---------------------------|---------|
| TITLE | OUTLINE |
| 210T JM-BB-TS-TEFC-R/S-C' | FACE |

| | |
|--|--------|
| | MAT'L. |
|--|--------|

FINISH

DRAWN DRS 09-06-1996

| | |
|-----|---------------|
| CHK | ML 09-20-1996 |
|-----|---------------|

APPD DN 09-20-1996

| | |
|-------|-----|
| SCALE | 1=5 |
|-------|-----|

REF

| | |
|--|-----|
| | FMF |
|--|-----|

| | |
|--|------|
| | PREV |
|--|------|

THIS DRAWING IN DESIGN AND DETAIL IS OUR PROPERTY AND MUST NOT BE USED EXCEPT
IN CONNECTION WITH OUR WORK ALL RIGHTS OF DESIGN AND INVENTION ARE RESERVED
THIS IS AN ELECTRONICALLY GENERATED DOCUMENT – DO NOT SCALE THIS PRINT

RFP

| DIST | LB |
|------|----|
|------|----|

CAD FILE ss86629

| |
|------|
| SIZE |
|------|

A

| | | | | |
|---|-------------|------|----|------|
| E | DRAWING NO. | PAGE | OF | REV. |
|---|-------------|------|----|------|

SS86629

REV.

6



| NO. | REVISION | BY & DATE | CHK | ANG | TOLERANCES UNLESS SPECIFIED | DEC. | INCHES | DRAWN RM | 11/20/1990 |
|--|--|----------------|-----|-------|--------------------------------|---------|-----------------|----------|--------------------------|
| | | | | | | | | | |
| 5 | CHG TO REGAL LOGO | SL 09/10/2015 | AB | | | | | CHK | ML 11/21/1990 |
| 4 | REVISED IEC NOTATIONS | MSG 11/15/2011 | CMN | .X | ±.1 | | | APPD | SAS 04/24/2003 |
| 3 | ADDED IEC NOTATIONS... (U1), (V1) ETC. MU95194 | MSG 5/10/2010 | MJS | .XX | ±.02 | | | SCALE | 1=1 |
| 2 | ADDED THE OPTIONAL CORD CONNECTION MU46318 | RDH 04/24/2003 | DRS | .XXX | ±.005 | | | REF | |
| 1 | REDRAWN | RM 11/20/1990 | | .XXXX | ±.0005 | | | FMF | |
| | | | | | ±7'30" | | | PREV | |
| THIS DRAWING IN DESIGN AND DETAIL IS OUR PROPERTY AND MUST NOT BE USED EXCEPT IN CONNECTION WITH OUR WORK ALL RIGHTS OF DESIGN AND INVENTION ARE RESERVED THIS IS AN ELECTRONICALLY GENERATED DOCUMENT - DO NOT SCALE THIS PRINT | | | | | | RFP | CAD FILE ee7308 | SIZE | DRAWING NO. PAGE OF REV. |
| | | | | | | DIST WP | | A | EE7308 5 |