

PRODUCT INFORMATION PACKET



Model No: 215TTFW4047

Catalog No: U340

10 HP Close-Coupled Pump Motor, 3 phase, 1800 RPM, 230/460 V, 215JM Frame, TEFC
Close-Coupled Pump Motors

Regal and Marathon are trademarks of Regal Rexnord Corporation or one of its affiliated companies.
©2021 Regal Rexnord Corporation, All Rights Reserved. MC017097E

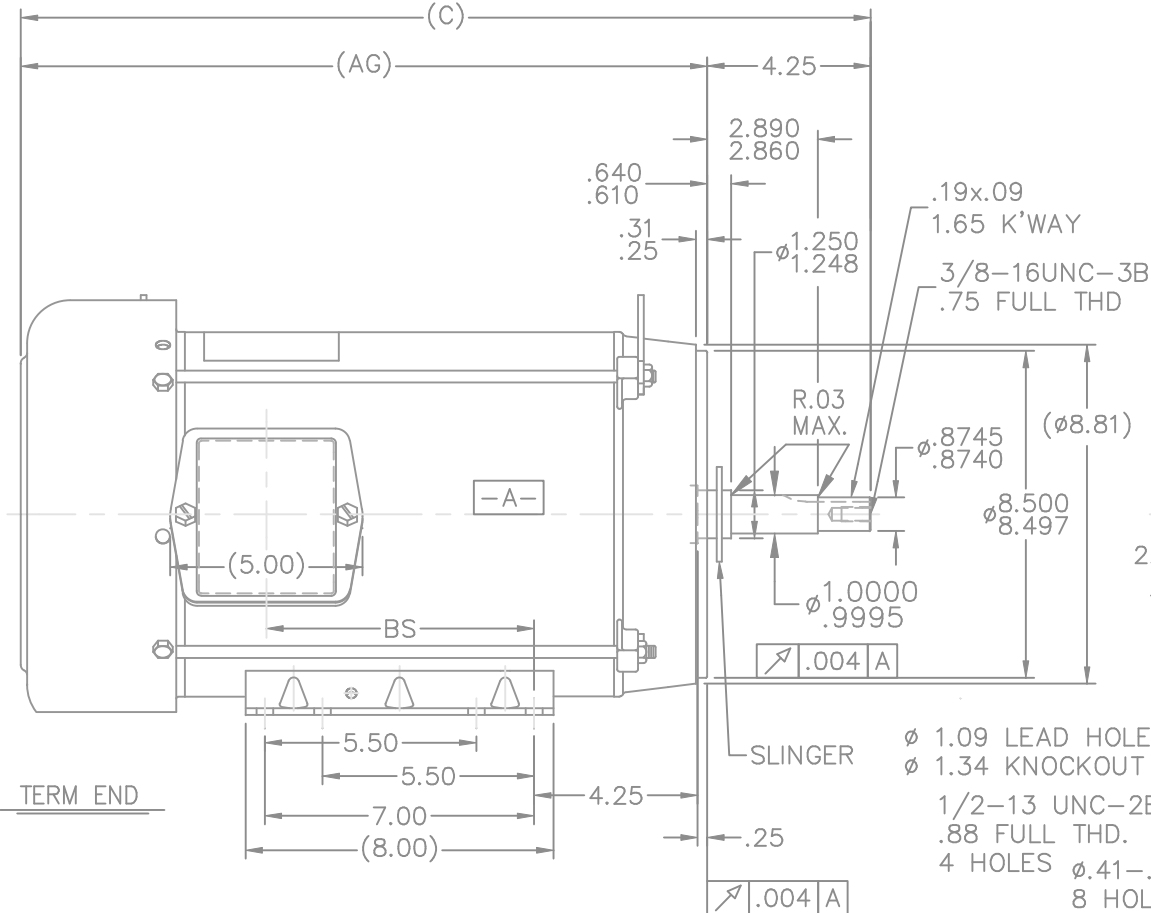


Nameplate Specifications

Output HP	10 Hp	Output KW	7.5 kW
Frequency	60 Hz	Voltage	230/460 V
Current	26.0/13.0 A	Speed	1755 rpm
Service Factor	1.15	Phase	3
Efficiency	89.5 %	Power Factor	81
Duty	Continuous	Insulation Class	F
Design Code	B	KVA Code	G
Frame	215JM	Enclosure	Totally Enclosed Fan Cooled
Thermal Protection	No	Ambient Temperature	40 °C
Drive End Bearing Size	6309	Opp Drive End Bearing Size	6206
UL	Recognized	CSA	Y
CE	Y	IP Code	43
Number of Speeds	1		

Technical Specifications

Electrical Type	Squirrel Cage Induction Run	Starting Method	Across The Line
Poles	4	Rotation	Reversible
Resistance Main	1.05 Ohms	Mounting	Rigid Base
Motor Orientation	Horizontal	Drive End Bearing	Ball
Opp Drive End Bearing	Ball	Frame Material	Rolled Steel
Shaft Type	JM	Overall Length	22.09 in
Frame Length	11.15 in	Shaft Diameter	0.875 in
Shaft Extension	4.25 in	Assembly/Box Mounting	F1/F2 Capable
Connection Drawing	A-EE7308	Outline Drawing	A-SS86629-1115



DASH	FR.	C	AG	BS	MOUNTING
965	213T	20.59	16.34	5.43	
1115	213/15T	22.09	17.84	6.93	
1240	213/15T	23.34	19.09	8.18	F1 ONLY

1. NAMEPLATE TO BE READ FROM C'BOX SIDE OF MOTOR.
2. BOX CAN BE MOUNTED IN 90° STEPS.
3. BOX CAN BE MOUNTED ON OPPOSITE SIDE BY REMOVING BRACKETS AND TURNING FRAME 180°. (EXCEPT AS NOTED.)

6	UPDATED DRAWING	TJW 04/30/2007		TOLERANCES UNLESS SPECIFIED	
5	REDRAWN IN AUTOCAD	TAT 07-06-2004	ML	DEC.	INCHES
4	UPDATED C' BOX GEOMETRY CN 28425	DRS 01-14-2000		.X	±.1
3	REVISED MOUNTING HOLES ON C' FACE WAS .75	MJD 06-18-1998		.XX	±.03
	FULL THREAD CN 25600-210			.XXX	±.005
2	REMOVED GRD. SCREW FROM FRAME CN 24453	MJD 10-01-1997		.XXXX	±.0005
NO.	REVISION	BY & DATE	CHK	ANG	±7'30"



TITLE	OUTLINE
210T JM-BB-TS-TEFC-R/S-C' FACE	

MAT'L.

FINISH

DRAWN DRS 09-06-1996

CHK ML 09-20-1996

APPD DN 09-20-1996

SCALE 1=5

REF

FMF

[PREV](#)

THIS DRAWING IN DESIGN AND DETAIL IS OUR PROPERTY AND MUST NOT BE USED EXCEPT
IN CONNECTION WITH OUR WORK ALL RIGHTS OF DESIGN AND INVENTION ARE RESERVED
THIS IS AN ELECTRONICALLY GENERATED DOCUMENT - DO NOT SCALE THIS PRINT

DIST LB

CAD FILE ss86629

SIZE	DRAWING NO.	PAGE	OF	REV.
------	-------------	------	----	------

A	SS86629	6
---	---------	---



NO.	REVISION	BY & DATE	CHK	ANG	TOLERANCES UNLESS SPECIFIED	FINISH	DRAWING NO.	PAGE	OF	REV.
5	CHG TO REGAL LOGO	SL 09/10/2015	AB	DEC.	INCHES					
4	REVISED IEC NOTATIONS	MSG 11/15/2011	CMN	.X	±.1					
3	ADDED IEC NOTATIONS... (U1), (V1) ETC. MU95194	MSG 5/10/2010	MJS	.XX	±.02					
2	ADDED THE OPTIONAL CORD CONNECTION MU46318	RDH 04/24/2003	DRS	.XXX	±.005					
1	REDRAWN	RM 11/20/1990		.XXXX	±.0005					
					±7'30"					
THIS DRAWING IN DESIGN AND DETAIL IS OUR PROPERTY AND MUST NOT BE USED EXCEPT IN CONNECTION WITH OUR WORK ALL RIGHTS OF DESIGN AND INVENTION ARE RESERVED THIS IS AN ELECTRONICALLY GENERATED DOCUMENT - DO NOT SCALE THIS PRINT						RFP	CAD FILE ee7308	SIZE A	DRAWING NO. EE7308	PAGE 5
						DIST WP				