

# PRODUCT INFORMATION PACKET

**marathon®**  
Motors

Model No: 215TTFS6030

Catalog No: E306

10 HP General Purpose Motor, 3 phase, 1800 RPM, 575 V, 215T Frame, TEFC  
General Purpose Motors



Regal and Marathon are trademarks of Regal Rexnord Corporation or one of its affiliated companies.  
©2021 Regal Rexnord Corporation, All Rights Reserved. MC017097E

**RegalRexnord**

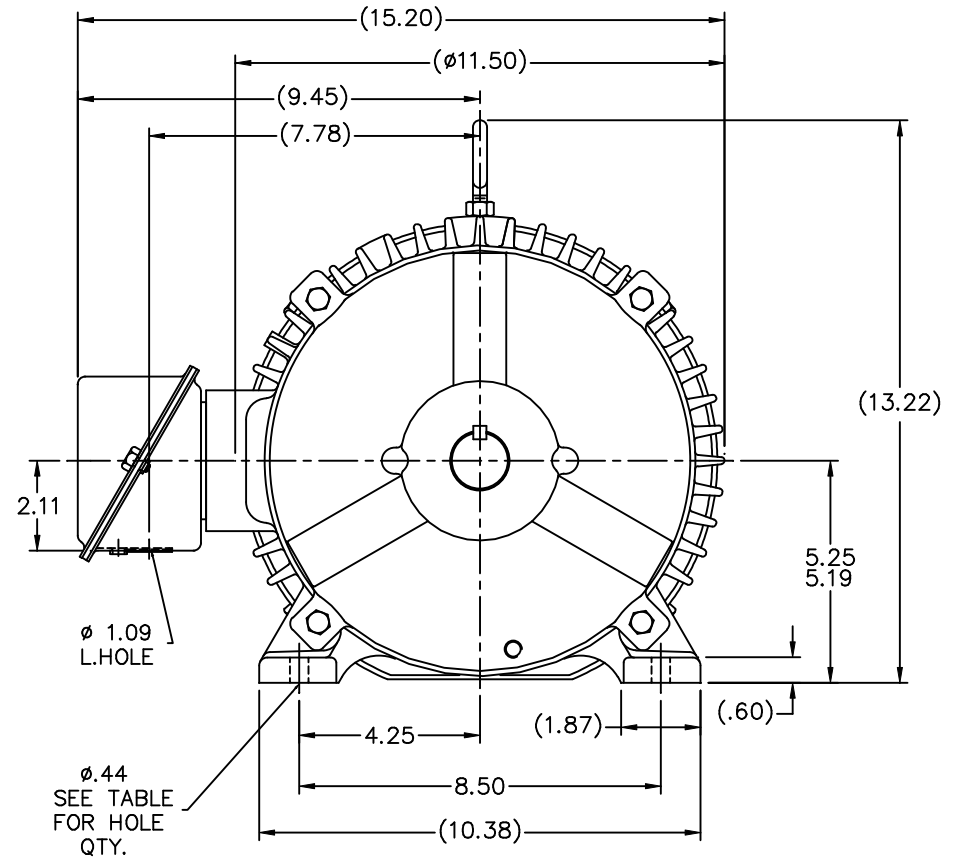
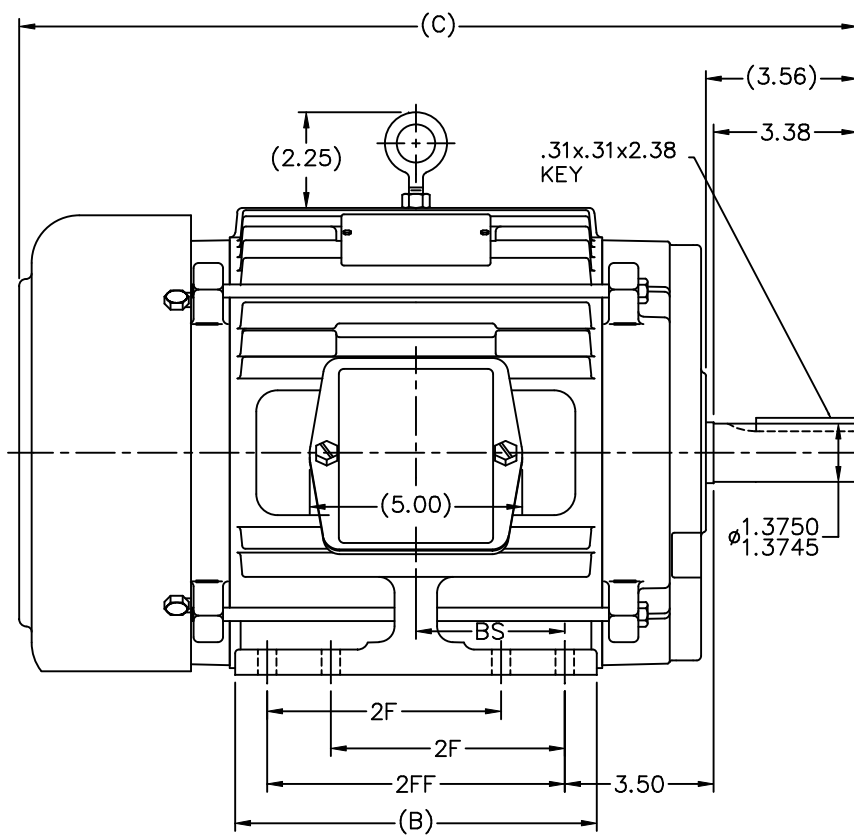
**Nameplate Specifications**

Output HP	10 Hp	Output KW	7.5 kW
Frequency	60 Hz	Voltage	575 V
Current	10.0 A	Speed	1765 rpm
Service Factor	1.15	Phase	3
Efficiency	91.7 %	Power Factor	82
Duty	Continuous	Insulation Class	F
Design Code	B	KVA Code	G
Frame	215T	Enclosure	Totally Enclosed Fan Cooled
Thermal Protection	No	Ambient Temperature	40 °C
Drive End Bearing Size	6307	Opp Drive End Bearing Size	6206
UL	Recognized	CSA	Y
CE	Y	IP Code	43
Number of Speeds	1		

**Technical Specifications**

Electrical Type	Squirrel Cage Induction Run	Starting Method	Across The Line
Poles	4	Rotation	Reversible
Resistance Main	.894 Ohms	Mounting	Rigid Base
Motor Orientation	Horizontal	Drive End Bearing	Ball
Opp Drive End Bearing	Ball	Frame Material	Cast Iron
Shaft Type	T	Overall Length	19.70 in
Frame Length	8.75 in	Shaft Diameter	1.375 in
Shaft Extension	3.56 in	Assembly/Box Mounting	F1/F2 Capable
Connection Drawing	A-EE7300	Outline Drawing	B-SS84278-875

This is an uncontrolled document once printed or downloaded and is subject to change without notice. Date Created:10/12/2021



## NOTES:

1. CONDUIT BOX CAN BE ROTATED IN 90° STEPS.
2. CONDUIT BOX CAN BE MOUNTED ON OPPOSITE SIDE BY REMOVING BRACKETS AND TURNING FRAME 180°.
3. NAMEPLATE TO BE READ FROM CONDUIT BOX SIDE OF MOTOR

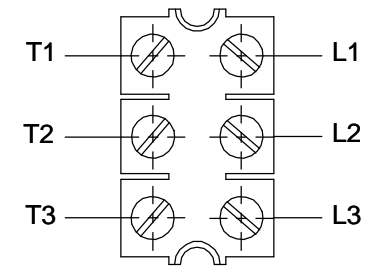
DASH	FRAME	B	C	2F	2FF	BS	FOOT HOLE QTY.	MOUNTING
725	213T	7.00	18.20	-	5.50	2.75	4	F1 OR F2
875	215T	8.50	19.70	-	7.00	3.50	4	F1 OR F2
875	213/5T	8.50	19.70	5.50	7.00	3.50	8	F1 OR F2
1000	213T	9.75	20.95	5.50	8.25	4.12	8	F1 OR F2
1000	215T	9.75	20.95	7.00	8.25	4.12	8	F1 OR F2

				TOLERANCES UNLESS SPECIFIED		MARATHON ELECTRIC	DRAWN SMC 04-07-1993			
NO.	REVISION	BY & DATE	CHK	ANG	FINISH		CHK	ML	APPD	REV.
7	ADDED FOOT HOLE QTY. & MTG. TO TABLE	CN 37322	TAT	01-14-2004	ML	.X	DEC.	INCHES		
6	UPDATED C' BOX GEOMETRY	CN 28425	DRS	01-27-2000	.XX	±.03				SCALE 11=32
5	ADDED DASHES 725 & 1000 WAS 'A' SIZE	CN 27451	MRB	04-13-1999	.XXX	±.005				REF
4	5.25/5.19 DIM. WAS 5.25/5.22	CN 16763	MRB	05-03-1995	.XXXX	±.0005				FMF
THIS DRAWING IN DESIGN AND DETAIL IS OUR PROPERTY AND MUST NOT BE USED EXCEPT IN CONNECTION WITH OUR WORK ALL RIGHTS OF DESIGN AND INVENTION ARE RESERVED THIS IS AN ELECTRONICALLY GENERATED DOCUMENT - DO NOT SCALE THIS PRINT							PREV			
CAD FILE ss84278							SIZE	DRAWING NO.	PAGE	OF
DIST LB							B	SS84278	7	

# THREE PHASE - SINGLE VOLTAGE MOTOR - CONDUIT BOX @ 'A'

TO REVERSE ROTATION:  
INTERCHANGE ANY TWO  
LINE LEAD CONNECTIONS.

## TERMINAL BLOCK WHEN SPECIFIED



### IF MOTOR HAS 6 LEADS



A-9806 DECAL

### OPTIONAL CORD CONNECTION



### VIEW OF TERMINAL END

DRAWING REVISION AB	REVISION BY JJB	DATE 06-27-2017
ECO ECO-0125361	APPROVED BY TB	DATE 06-27-2017
ECO DESCRIPTION UPDATED TO CURRENT STANDARDS		
<small>COPYRIGHT REGAL BELOIT AMERICA, INC. ALL RIGHTS RESERVED.          PROPRIETARY AND CONFIDENTIAL INFORMATION - THIS DOCUMENT IS THE PROPERTY OF          REGAL BELOIT AMERICA, INC. ("OWNER") AND CONTAINS OWNER'S PROPRIETARY          INFORMATION. ANY PERSON, CORPORATION OR OTHER FIRM RECEIVING IT IS DEEMED,          BY RECEIVING IT, TO AGREE THAT IT, AND/OR ANY PART OF IT, SHALL NOT BE DISCLOSED          TO ANY PERSON, CORPORATION OR OTHER ENTITY, DUPLICATED, AND/OR USED, EXCEPT          AS EXPRESSLY APPROVED IN WRITING IN ADVANCE BY OWNER. THIS DOCUMENT SHALL          BE RETURNED TO OWNER UPON REQUEST. IT MAY BE SUBJECT TO CERTAIN          RESTRICTIONS UNDER APPLICABLE EXPORT CONTROL LAWS AND REGULATIONS.</small>		

DRAWN BY DA
DATE 03-26-1993
APPROVED BY TB
DATE 03-26-1993
REFERENCE
THIRD ANGLE PROJECTION



Regal Beloit America, Inc.

DESCRIPTION  
**CONNECTION DIAGRAM**  
EXTERNAL - SINGLE VOLTAGE - 3Ø MOTOR

MATERIAL PROCESS/FINISH

SIZE A	DRAWING NUMBER EE7300	SHEET 1 OF 1
-----------	--------------------------	-----------------

## CERTIFICATION DATA SHEET

Model#: 215TTFS6030 EV

WINDING#: K2154249 NONE 4

CONN. DIAGRAM: A-EE7300

ASSEMBLY: F1/F2 CAPABLE

OUTLINE: B-SS84278-875

## TYPICAL MOTOR PERFORMANCE DATA

HP	KW	SYNC. RPM	F.L. RPM	FRAME	ENCLOSURE	KVA CODE	DESIGN
10	7.5	1800	1765	215T	TEFC	G	B

PH	Hz	VOLTS	FL AMPS	START TYPE	DUTY	INSL	S.F	AMB°C	ELEVATION
3	60	575	10	ACROSS THE LINE	CONTINUOUS	F3	1.15	40	3300

FULL LOAD EFF: 91.7	3/4 LOAD EFF: 91.7	1/2 LOAD EFF: 91	GTD. EFF	ELEC. TYPE	NO LOAD AMPS
FULL LOAD PF: 82	3/4 LOAD PF: 78	1/2 LOAD PF: 68	91	SQ CAGE IND RUN	4

F.L. TORQUE	LOCKED ROTOR AMPS	L.R. TORQUE	B.D. TORQUE	F.L. RISE°C
29.8 LB-FT	64	60 LB-FT 201	81 LB-FT 272	55

SOUND PRESSURE @ 3 FT.	SOUND POWER	ROTOR WK^2	MAX. WK^2	SAFE STALL TIME	STARTS /HOUR	APPROX. MOTOR WGT
62 dBA	72 dBA	1.2 LB-FT^2	192 LB-FT^2	20 SEC.	2	240 LBS.

## \*\*\* SUPPLEMENTAL INFORMATION \*\*\*

DE BRACKET TYPE	ODE BRACKET TYPE	MOUNT TYPE	ORIENTATION	SEVERE DUTY	HAZARDOUS LOCATION	DRIP COVER	SCREENS	PAINT
STANDARD	STANDARD	RIGID	HORIZONTAL	FALSE	NONE	FALSE	NONE	BLUE (ENAMEL)

BEARINGS		GREASE	SHAFT TYPE	SPECIAL DE	SPECIAL ODE	SHAFT MATERIAL	FRAME MATERIAL
DE	OPE						
BALL	BALL						
6307	6206	POLYREX EM	T	NONE	NONE	1045 HOT ROLLED (C-204)	CAST IRON

THERMO-PROTECTORS				THERMISTORS	CONTROL	SPACE /n HEATERS
THERMOSTATS	PROTECTORS	WDG RTDs	BRG RTDs			
NONE	NOT	NONE	NONE	NONE	FALSE	NONE VOLTS

If Inverter equals NONE, contact factory for further information

* N O T E S *	INVERTER TORQUE: NONE		
	INV. HP SPEED RANGE: NONE		
	ENCODER: NONE		
	NONE NONE		
	NONE NONE PPR		
	BRAKE: NONE NONE		
	NONE P/N NONE		
	NONE NONE		
- FT-LB		NONE V	NONE Hz

DATE: 06/22/2017 08:02:06 AM

FORM 3531 REV.3 02/07/99

\*\* Subject to change without notice.

## Data Sheet

Date: 6/29/2017

Customer: \_\_\_\_\_

Attention: \_\_\_\_\_

Submitted by: FAREEDA DUDEKULA



215TTF56030

Submittal

Data @ 575 V

## Motor Load Data

Load	0%	25%	50%	75%	100%	115%	125%	LR	
Current (Amps)	4.0	4.4	6.0	8.0	10.0	11.2	12.4	64.0	
Torque (ft-lb)	0.00	7.5	14.5	22.0	29.8	34.5	37.5	60.0	
RPM	1800	1790	1785	1775	1765	1,755	1750	0	
Efficiency (%)		87.5	91.0	91.7	91.7	91.0	90.2		
P.F. (%)	6.5	47.0	68.0	78.0	82.0	83.5	83.5	42.0	

## Motor Speed Data

	LR	Pull-Up	BD	Rated	Idle					
Speed (RPM)	0	900	1675	1765	1800					
Current (Amps)	64.0	57.6	36.8	10.0	4.0					
Torque (ft-lb)	60.0	54.0	81.0	29.8	0.00					
<div><div>— Efficiency (%) — P.F. (%) — Current (Amps)</div><div>EFFICIENCY (%)</div><div>P.F. (%)</div><div>CURRENT (AMPS)</div><div>LOAD</div></div>						Information Block				
						HP		10.0		
						Sync. RPM		1800		
						Frame		215		
						Enclosure		TEFC		
						Construction		TFN		
						Voltage		575 V		
						Frequency		60 Hz		
						Design		B		
						LR Code letter		G		
						Service Factor		1.15		
						Temp Rise @ FL		55 ° C		
						Duty		CONT		
						Ambient		40 ° C		
						Elevation		1,000 feet		
						Rotor/Shaft wk²		1.20 Lb-Ft²		
						Ref Wdg		K2154249 NONE		
Sound Pressure @ 1M		62 dBA								
VFD Rating		NONE								
Outline Dwg		B-SS84278-875								
Conn. Diag		A-EE7300								
Additional Specifications:										
0										
0										
EQUIV CKT (OHMS / PHASE)										
R1		R2		X1		X2		Xm		
0.8430		0.7630		3.2700		5.0140		79.8750		

## Speed -Torque Curve

