

# PRODUCT INFORMATION PACKET

**marathon®**  
Motors

Model No: 215TTFS6001

Catalog No: E219

10 HP General Purpose Motor, 3 phase, 3600 RPM, 230/460 V, 215T Frame, TEFC  
General Purpose Motors



Regal and Marathon are trademarks of Regal Rexnord Corporation or one of its affiliated companies.  
©2021 Regal Rexnord Corporation, All Rights Reserved. MC017097E

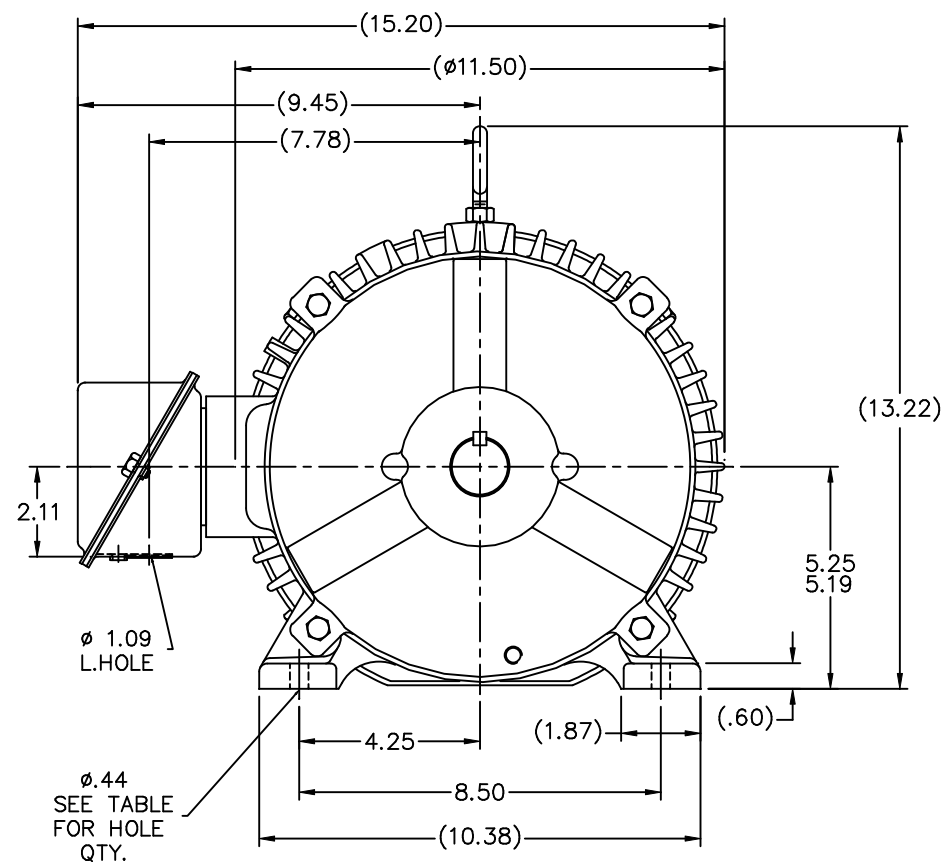
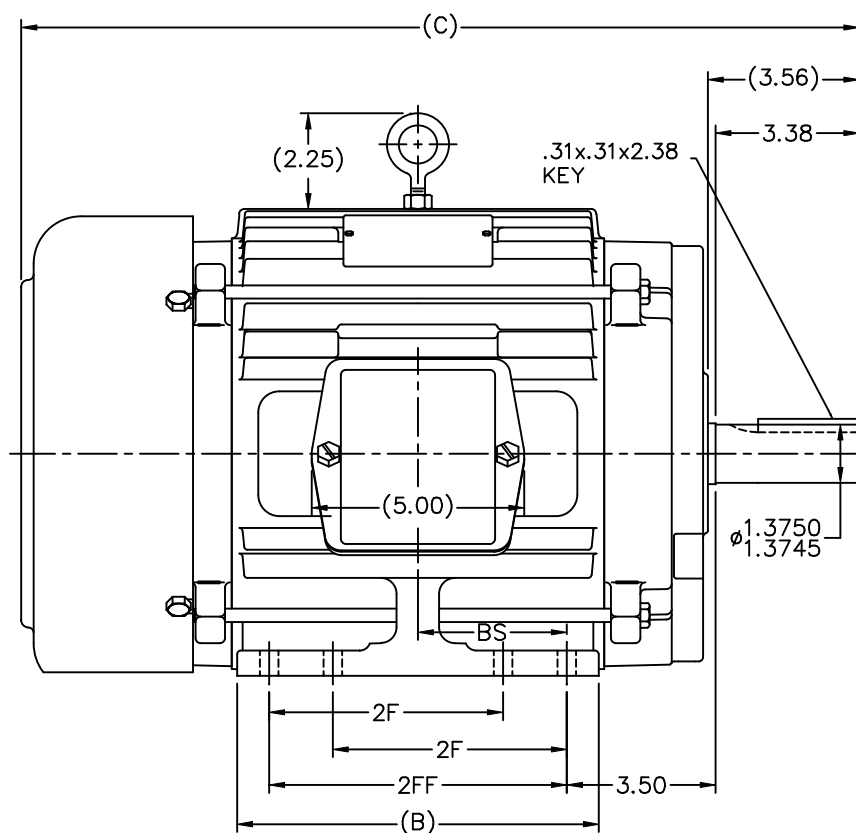
**RegalRexnord**

### Nameplate Specifications

Output HP	10 Hp	Output KW	7.5 kW
Frequency	60 Hz	Voltage	230/460 V
Current	23.6/11.8 A	Speed	3535 rpm
Service Factor	1.15	Phase	3
Efficiency	91.7 %	Power Factor	87
Duty	Continuous	Insulation Class	F
Design Code	B	KVA Code	H
Frame	215T	Enclosure	Totally Enclosed Fan Cooled
Thermal Protection	No	Ambient Temperature	40 °C
Drive End Bearing Size	6307	Opp Drive End Bearing Size	6206
UL	Recognized	CSA	Y
CE	Y	IP Code	43
Number of Speeds	1		

### Technical Specifications

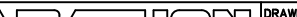
Electrical Type	Squirrel Cage Induction Run	Starting Method	Across The Line
Poles	2	Rotation	Reversible
Resistance Main	.8 Ohms	Mounting	Rigid Base
Motor Orientation	Horizontal	Drive End Bearing	Ball
Opp Drive End Bearing	Ball	Frame Material	Cast Iron
Shaft Type	T	Overall Length	19.70 in
Frame Length	8.75 in	Shaft Diameter	1.375 in
Shaft Extension	3.56 in	Assembly/Box Mounting	F1/F2 Capable
Outline Drawing	B-SS84278-875	Connection Drawing	A-EE7308



NOTES:

1. CONDUIT BOX CAN BE ROTATED IN 90° STEPS.
2. CONDUIT BOX CAN BE MOUNTED ON OPPOSITE SIDE BY REMOVING BRACKETS AND TURNING FRAME 180°.
3. NAMEPLATE TO BE READ FROM CONDUIT BOX SIDE OF MOTOR

DASH	FRAME	B	C	2F	2FF	BS	FOOT HOLE QTY.	MOUNTING
725	213T	7.00	18.20	—	5.50	2.75	4	F1 OR F2
875	215T	8.50	19.70	—	7.00	3.50	4	F1 OR F2
875	213/5T	8.50	19.70	5.50	7.00	3.50	8	F1 OR F2
1000	213T	9.75	20.95	5.50	8.25	4.12	8	F1 OR F2
1000	215T	9.75	20.95	7.00	8.25	4.12	8	F1 OR F2

						TOLERANCES UNLESS SPECIFIED		DRAWN SMC 04-07-1993
						DEC. INCHES		CHK ML 04-12-1993
7	ADDED FOOT HOLE QTY. & MTG. TO TABLE	CN 37322	TAT 01-14-2004	ML	X	±.1		APPD GK 04-19-1993
6	UPDATED C' BOX GEOMETRY	CN 28425	DRS 01-27-2000	.XX	±.03		TITLE OUTLINE	SCALE 11=32
5	ADDED DASHES 725 & 1000 WAS 'A' SIZE	CN 27451	MRB 04-13-1999	.XXX	±.005		210T FR. - TEFC - STEEL C' BOX	REF
4	5.25/5.19 DIM. WAS 5.25/5.22	CN 16763	MRB 05-03-1995	.XXXX	±.0005		MATL.	FIMF
NO.	REVISION		BY & DATE	CHK	ANG	±7°30"	FINISH	PREV
THIS DRAWING IN DESIGN AND DETAIL IS OUR PROPERTY AND MUST NOT BE USED EXCEPT IN CONNECTION WITH OUR WORKED DRAWING ALL RIGHTS OF DESIGN ARE RESERVED THIS IS AN ELECTRONICALLY GENERATED DOCUMENT - DO NOT SCALE THIS PRINT							RFP	INVEST FILE SS84278
					DIST	LB	SIZE B	DRAWING NO. PAGE OF REV. SS84278 7



NO.	REVISION	BY & DATE	CHK	ANG	TOLERANCES UNLESS SPECIFIED	FINISH	DRAWING NO.	PAGE	OF	REV.
5	CHG TO REGAL LOGO	SL 09/10/2015	AB	DEC.	INCHES					
4	REVISED IEC NOTATIONS	MSG 11/15/2011	CMN	.X	±.1					
3	ADDED IEC NOTATIONS... (U1), (V1) ETC. MU95194	MSG 5/10/2010	MJS	.XX	±.02					
2	ADDED THE OPTIONAL CORD CONNECTION MU46318	RDH 04/24/2003	DRS	.XXX	±.005					
1	REDRAWN	RM 11/20/1990		.XXXX	±.0005					
					±7'30"					
THIS DRAWING IN DESIGN AND DETAIL IS OUR PROPERTY AND MUST NOT BE USED EXCEPT IN CONNECTION WITH OUR WORK ALL RIGHTS OF DESIGN AND INVENTION ARE RESERVED THIS IS AN ELECTRONICALLY GENERATED DOCUMENT - DO NOT SCALE THIS PRINT						RFP	CAD FILE ee7308	SIZE A	DRAWING NO. EE7308	PAGE 5
						DIST WP				

## CERTIFICATION DATA SHEET

Model#: 215TTFS6001 GW

WINDING#: K215295 NONE 6

CONN. DIAGRAM: A-EE7308

ASSEMBLY: F1/F2 CAPABLE

OUTLINE: B-SS84278-875

## TYPICAL MOTOR PERFORMANCE DATA

HP	KW	SYNC. RPM	F.L. RPM	FRAME	ENCLOSURE	KVA CODE	DESIGN
10	7.5	3600	3535	215T	TEFC	H	B

PH	Hz	VOLTS	FL AMPS	START TYPE	DUTY	INSL	S.F	AMB°C	ELEVATION
3	60	230/460	23.6/11.8	ACROSS THE LINE	CONTINUOUS	F3	1.15	40	3300

FULL LOAD EFF: 91.7	3/4 LOAD EFF: 92.4	1/2 LOAD EFF: 91.7	GTD. EFF	ELEC. TYPE	NO LOAD AMPS
FULL LOAD PF: 87	3/4 LOAD PF: 86	1/2 LOAD PF: 78.5	91	SQ CAGE IND RUN	7 / 3.5

F.L. TORQUE	LOCKED ROTOR AMPS	L.R. TORQUE	B.D. TORQUE	F.L. RISE°C
14.9 LB-FT	160 / 80	30 LB-FT 201	46 LB-FT 309	50

SOUND PRESSURE @ 3 FT.	SOUND POWER	ROTOR WK^2	MAX. WK^2	SAFE STALL TIME	STARTS /HOUR	APPROX. MOTOR WGT
72 dBA	82 dBA	0.68 LB-FT^2	18 LB-FT^2	15 SEC.	2	230 LBS.

## \*\*\* SUPPLEMENTAL INFORMATION \*\*\*

DE BRACKET TYPE	ODE BRACKET TYPE	MOUNT TYPE	ORIENTATION	SEVERE DUTY	HAZARDOUS LOCATION	DRIP COVER	SCREENS	PAINT
STANDARD	STANDARD	RIGID	HORIZONTAL	FALSE	NONE	FALSE	NONE	BLUE (ENAMEL)

BEARINGS		GREASE	SHAFT TYPE	SPECIAL DE	SPECIAL ODE	SHAFT MATERIAL	FRAME MATERIAL
DE	OPE						
BALL	BALL						
6307	6206	POLYREX EM	T	NONE	NONE	1144 STRESSPROOF (C-223)	CAST IRON

THERMO-PROTECTORS				THERMISTORS	CONTROL	SPACE /n HEATERS
THERMOSTATS	PROTECTORS	WDG RTDs	BRG RTDs			
NONE	NOT	NONE	NONE	NONE	FALSE	NONE VOLTS

If Inverter equals NONE, contact factory for further information

* N O T E S *	INVERTER TORQUE: NONE
	INV. HP SPEED RANGE: NONE
	ENCODER: NONE
	NONE NONE NONE NONE PPR
	BRAKE: NONE NONE
	NONE P/N NONE
	NONE NONE
	- FT-LB NONE V NONE Hz

DATE: 06/22/2017 08:01:00 AM

FORM 3531 REV.3 02/07/99

\*\* Subject to change without notice.

## Data Sheet

Date: 16-06-2017

Customer:

Attention:

Submitted by: FAREEDA DUDEKULA

215TTF56001



Submittal

Data @ 460 V

## Motor Load Data

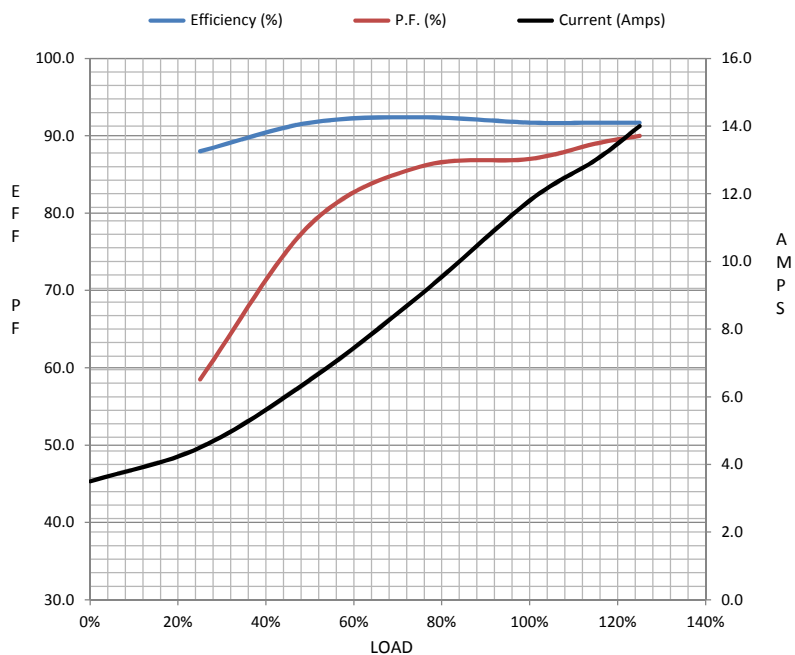
Load	0%	25%	50%	75%	100%	115%	125%	LR	
Current (Amps)	3.5	4.5	6.5	9.0	11.8	13.0	14.0	80.0	
Torque (ft-lb)	0.00	3.5	7.5	11.0	14.9	17.0	18.5	30.0	
RPM	3600	3585	3570	3555	3535	3,530	3525	0	
Efficiency (%)		88.0	91.7	92.4	91.7	91.7	91.7		
P.F. (%)	8.5	58.5	78.5	86.0	87.0	89.0	90.0	40.0	

## Motor Speed Data

	LR	Pull-Up	BD	Rated	Idle
Speed (RPM)	0	1800	3175	3535	3600
Current (Amps)	80.0	72.0	50.0	11.8	3.5
Torque (ft-lb)	30.0	27.0	46.0	14.9	0.00

## Information Block

HP	10.0			
Sync. RPM	3600			
Frame	215			
Enclosure	TEFC			
Construction	TFN			
Voltage	230/460 V			
Frequency	60 Hz			
Design	B			
LR Code letter	H			
Service Factor	1.15			
Temp Rise @ FL	50 ° C			
Duty	CONT			
Ambient	40 ° C			
Elevation	1,000 feet			
Rotor/Shaft wk <sup>2</sup>	0.68 Lb-Ft <sup>2</sup>			
Ref Wdg	K215295 NONE			
Sound Pressure @ 1M	72 dBA			
VFD Rating	NONE			
Outline Dwg	B-SS84278-875			
Conn. Diag	A-EE7308			
Additional Specifications:				
0				
365THFS8036				
EQUIV CKT (OHMS / PHASE)				
R1	R2	X1	X2	Xm
0.5230	0.3980	1.8060	2.0620	72.1360



## Speed -Torque Curve

