

# PRODUCT INFORMATION PACKET



Model No: 215TTFS14103

Catalog No: L421A

General Purpose Motor, 3 & 2 HP, 3 Ph, 60 & 50 Hz, 230/460 & 190/380 V, 900 & 750 RPM, 215T Frame,  
TEFC

Regal and Marathon are trademarks of Regal Rexnord Corporation or one of its affiliated companies.

©2023 Regal Rexnord Corporation, All Rights Reserved. MC017097E

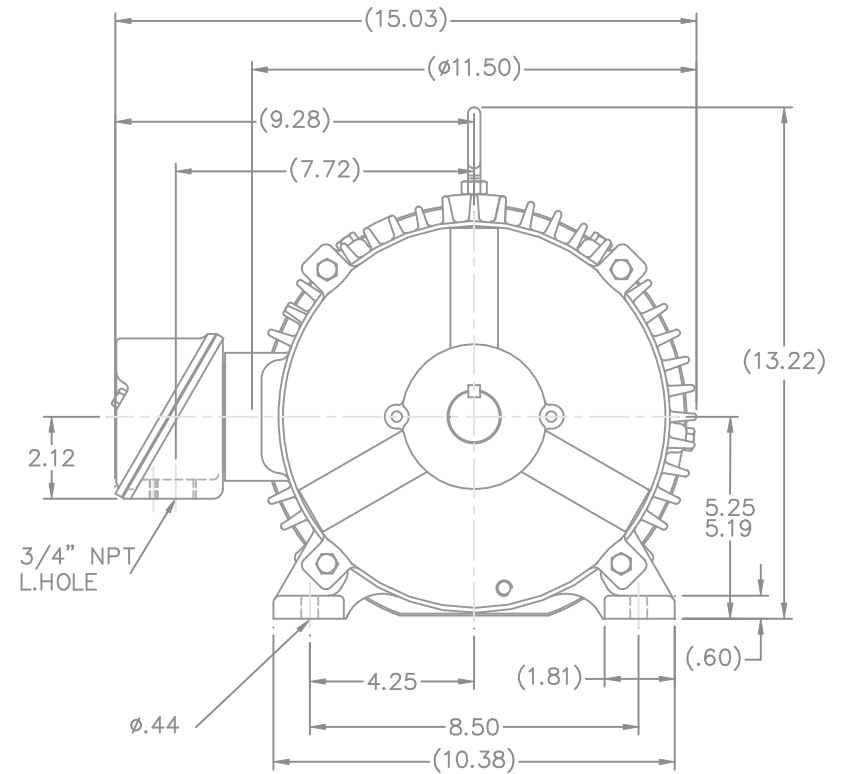
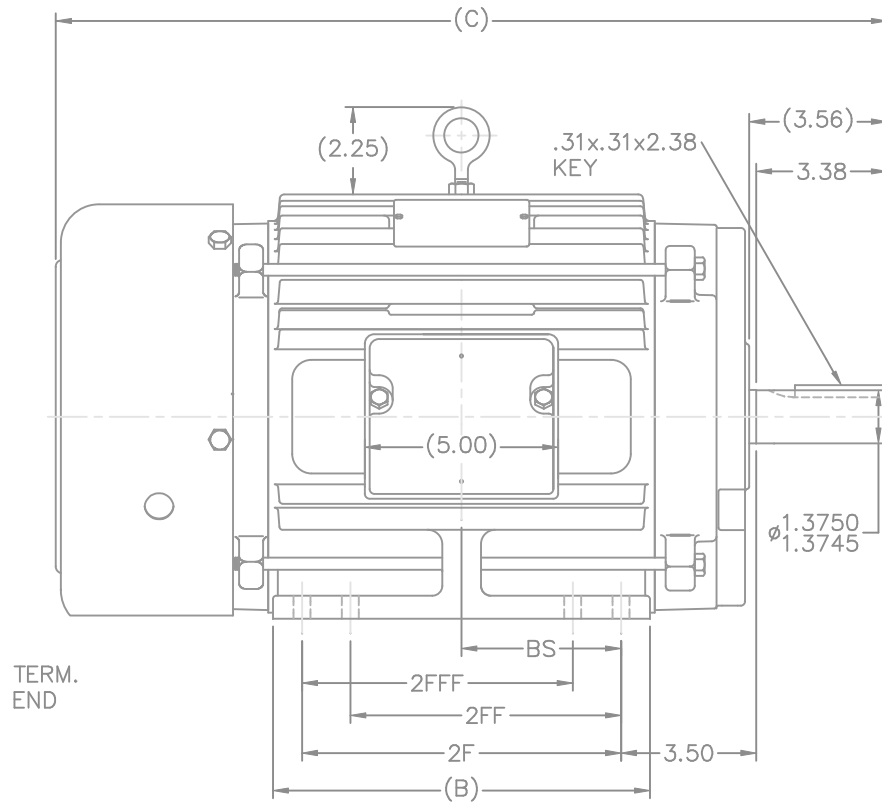


### Nameplate Specifications

Phase	3	Output HP	3 & 2 Hp
Output KW	2.2 & 1.5 kW	Voltage	230/460 & 190/380 V
Speed	873 & 730 rpm	Service Factor	1.15 & 1.15
Frame	215T	Enclosure	Totally Enclosed Fan Cooled
Thermal Protection	No Protection	Efficiency	84 & 82.5 %
Ambient Temperature	40 °C	Frequency	60 & 50 Hz
Current	10.6/5.3 & 9.4/4.7 A	Power Factor	65.2
Duty	Continuous	Insulation Class	F
Design Code	B	KVA Code	H
Drive End Bearing Size	6307	Opp Drive End Bearing Size	6206
UL	Recognized	CSA	Y
CE	Y	IP Code	43
Number of Speeds	1		

### Technical Specifications


Electrical Type	Squirrel Cage Induction Run	Starting Method	Across The Line
Poles	8	Rotation	Reversible
Resistance Main	3.17 Ohms	Mounting	Rigid Base
Motor Orientation	Horizontal	Drive End Bearing	Ball
Opp Drive End Bearing	Ball	Frame Material	Cast Iron
Shaft Type	T	Overall Length	19.72 in
Frame Length	8.75 in	Shaft Diameter	1.375 in
Shaft Extension	3.56 in	Assembly/Box Mounting	F1/F2 Capable
Connection Drawing	A-EE7308	Outline Drawing	B-SS84236-875



DASH	FRAME	B	2F	2FF	2FFF	BS	FOOT HOLE QTY.	MOUNTING	C CAST FAN GUARD	C STEEL FAN GUARD
725	213T	7.00	5.50	—	—	2.75	4	F1 OR F2	18.22	18.74
875	215T	8.50	7.00	—	—	3.50	4	F1 OR F2	19.72	20.24
875	213/5T	8.50	7.00	5.50	5.50	3.50	8	F1 OR F2	19.72	20.24
1000	213T	9.75	8.25	5.50	5.50	4.12	8	F1 OR F2	20.97	21.49
1000	215T	9.75	8.25	7.00	7.00	4.12	8	F1 OR F2	20.97	21.49

## NOTES:

1. CONDUIT BOX CAN BE ROTATED IN 90° STEPS.
2. CONDUIT BOX CAN BE MOUNTED ON OPPOSITE SIDE BY REMOVING BRACKETS AND TURNING FRAME 180°.
3. NAMEPLATE TO BE READ FROM CONDUIT BOX SIDE OF MOTOR.

13	REMOVED NOTE "SEE TABLE FOR HOLE QTY."	RDH 11-18-2003	ML	TOLERANCES UNLESS SPECIFIED		DRAWN RM 1-11-1993
12	-875'S FOOT HOLE QTY'S. WERE SWITCHED CN37323	ERH 10-21-2003	ML	DEC. INCHES		CHK ML 1-12-1993
11	REVISED TABLE TO CLARIFY MOUNTINGS CN37301	TAT 9-28-2003	ML	.X ±.1		APPD GK 1-12-1993
10	CORRECTED CONDUIT BOX VIEWS CN28426	BLR 1-5-2000	.XX ±.03	TITLE OUTLINE 210T FR. — TEFC		SCALE 5=16
9	REVISED CONDUIT BOX CN28426	BLR 1-4-2000	.XXX ±.005	MATL	REF	
8	REVISED DASH TABLE AND FOOT HOLE DIM.	MRB 3-26-1999	.XXXX ±.0005		FMF	
NO.	REVISION	BY & DATE	CHK	ANG ±7°30"	FINISH	PREV
THIS DRAWING IN DESIGN AND DETAIL IS OUR PROPERTY AND MUST NOT BE USED EXCEPT IN CONNECTION WITH OUR RIGHTS OF DESIGN AND INVENTION. THIS IS AN ELECTRONICALLY GENERATED DOCUMENT — DO NOT SCALE THIS PRINT				RFP	CAD FILE ss84236	SIZE B
				DIST LB		DRAWING NO. SS84236
						PAGE OF
						REV. 13

THIS DRAWING IN DESIGN AND DETAIL IS OUR PROPERTY AND MUST NOT BE USED EXCEPT IN CONNECTION WITH OUR WORK. ALL RIGHTS OF DESIGN AND INVENTION ARE RESERVED. THIS IS AN ELECTRONICALLY GENERATED DOCUMENT — DO NOT SCALE THIS PRINT



NO.	REVISION	BY & DATE	CHK	ANG	TOLERANCES UNLESS SPECIFIED		RFP	CAD FILE	SIZE	DRAWING NO.	PAGE	OF	REV.
					DEC.	INCHES							
5	CHG TO REGAL LOGO	SL 09/10/2015	AB		DEC.	INCHES							
4	REVISED IEC NOTATIONS	MSG 11/15/2011	CMN	.X		±.1							
3	ADDED IEC NOTATIONS... (U1), (V1) ETC. MU95194	MSG 5/10/2010	MJS	.XX		±.02							
2	ADDED THE OPTIONAL CORD CONNECTION MU46318	RDH 04/24/2003	DRS	.XXX		±.005							
1	REDRAWN	RM 11/20/1990		.XXXX		±.0005							
						±7'30"							
THIS DRAWING IN DESIGN AND DETAIL IS OUR PROPERTY AND MUST NOT BE USED EXCEPT IN CONNECTION WITH OUR WORK ALL RIGHTS OF DESIGN AND INVENTION ARE RESERVED THIS IS AN ELECTRONICALLY GENERATED DOCUMENT - DO NOT SCALE THIS PRINT								CAD FILE ee7308	A	EE7308			5