

PRODUCT INFORMATION PACKET

Model No: 284TSTGCD6505

Catalog No: C502

Explosion Proof Motor, 25 HP, 3 Ph, 60 Hz, 230/460 V, 3600 RPM, 284TSC Frame, EPFC



Regal and are trademarks of Regal Rexnord Corporation or one of its affiliated companies.
©2022 Regal Rexnord Corporation, All Rights Reserved. MC017097E

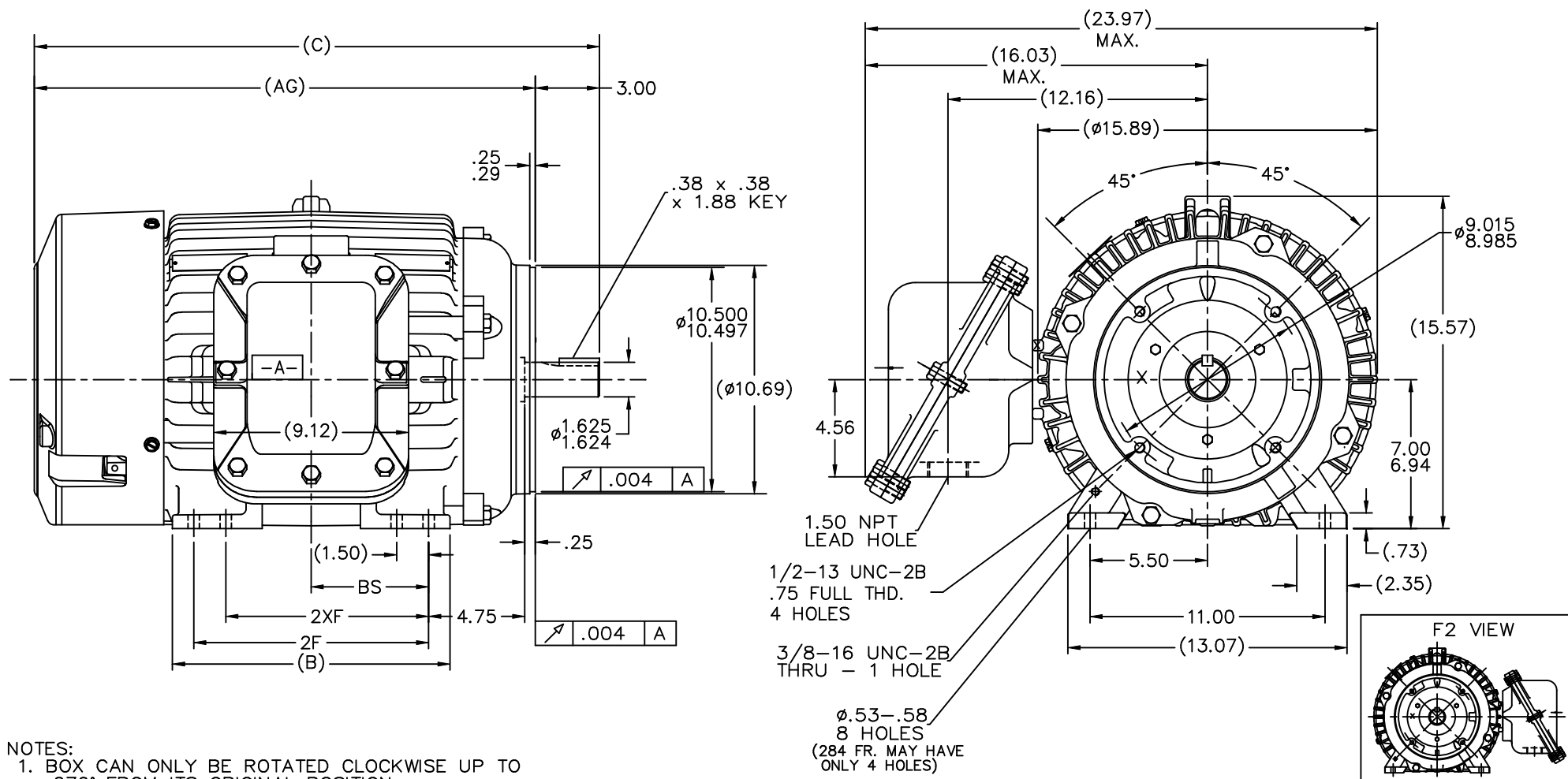
Nameplate Specifications

Output HP	25 Hp	Output KW	18.7 kW
Frequency	60 Hz	Voltage	230/460 V
Current	60.0/30.0 A	Speed	3555 rpm
Service Factor	1	Phase	3
Efficiency	91.7 %	Power Factor	86
Duty	Continuous	Insulation Class	F
Design Code	B	KVA Code	G
Frame	284TSC	Enclosure	Explosion Proof Fan cooled
Thermal Protection	Thermostat	Ambient Temperature	50 °C
Drive End Bearing Size	6311	Opp Drive End Bearing Size	6210
UL	UL Listed And CSA Certified	CSA	Y
CE	N	IP Code	54
Hazardous Location	DIV 1 EXP PROOF CL I GR CD CL II GR FG T3C	Number of Speeds	1

Technical Specifications

Electrical Type	Squirrel Cage Induction Run	Starting Method	Across The Line
Poles	2	Rotation	Reversible
Resistance Main	.395 Ohms	Mounting	Rigid Base
Motor Orientation	Horizontal	Drive End Bearing	Ball
Opp Drive End Bearing	Ball	Frame Material	Cast Iron
Shaft Type	TS	Shaft Diameter	1.625 in
Assembly/Box Mounting	F1 ONLY		
Outline Drawing	SS311282-1275	Connection Drawing	EE7308AD

This is an uncontrolled document once printed or downloaded and is subject to change without notice. Date Created:08/24/2022

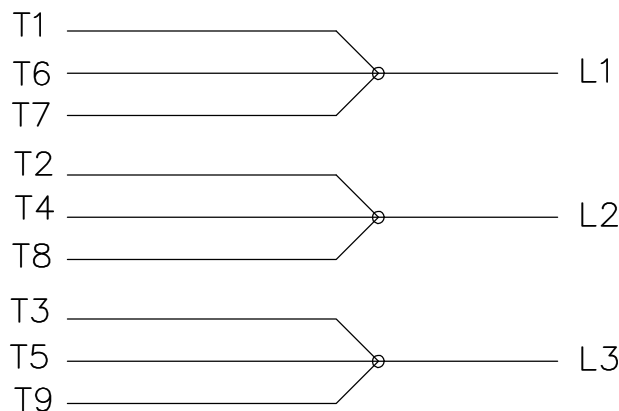
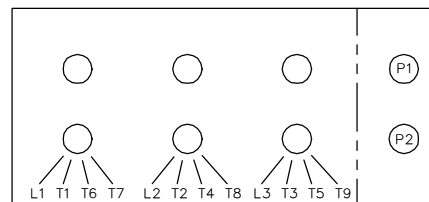
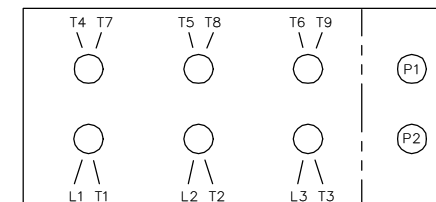
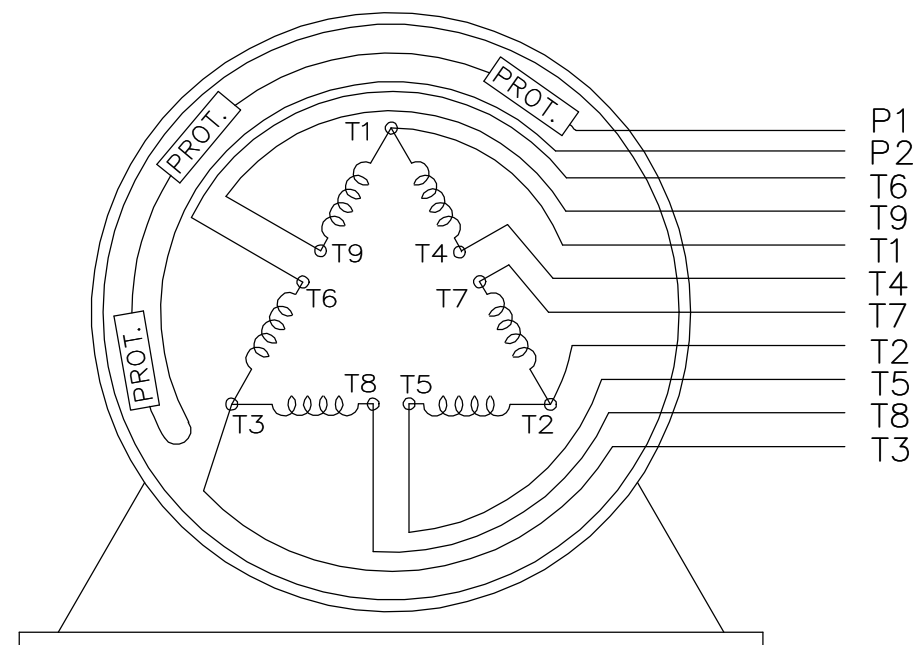
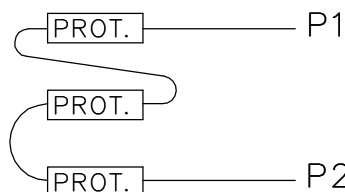
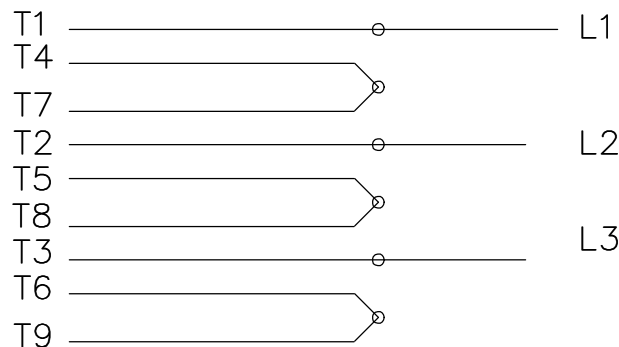


NOTES:


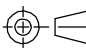
- BOX CAN ONLY BE ROTATED CLOCKWISE UP TO 270° FROM ITS ORIGINAL POSITION.
- NAMEPLATE TO BE READ FROM CONDUIT BOX SIDE OF MOTOR.

DASH	FRAME	B	AG	C	2F	2XF	BS
1275	284TSC	12.50	21.96	24.96	9.50		4.75
1425	284/286TSC	13.00	23.46	26.46	11.00	9.50	5.50

				TOLERANCES UNLESS SPECIFIED		MARATHON ELECTRIC	DRAWN TJB 02-05-2002			
				DEC.	INCHES		CHK	DRS	02-06-2002	
				.X	±.1			APPD	BW	02-06-2002
2	ADDED F2 VIEW	ERH	11-19-2003	BW	.XXX ±.005	TITLE	OUTLINE-EXP. PR.-TGN			
1	NEW DRAWING	MU 40507	TJB 02-06-2002	BW	.XXXX ±.0005		280TSC FR.-BB-STD-12.50 LAM			
REVISION				BY & DATE	CHK	ANG	FINISH			
THIS DRAWING IN DESIGN AND DETAIL IS OUR PROPERTY AND MUST NOT BE USED EXCEPT IN CONNECTION WITH OUR WORK ALL RIGHTS OF DESIGN AND INVENTION ARE RESERVED THIS IS AN ELECTRONICALLY GENERATED DOCUMENT - DO NOT SCALE THIS PRINT				RFP			CAD FILE ss311282			
				DIST	LB		SIZE	DRAWING NO.	PAGE	OF
							B	SS311282		2

LOW VOLTAGELOW VOLTAGEHIGH VOLTAGEHIGH VOLTAGEVIEW OF TERMINAL END

WHEN MORE THAN ONE PROT. IS USED; PROT. ARE CONNECTED IN SERIES

DRAWING REVISION L	REVISION BY JP	REV DATE/© DATE 06-21-2019	TOLERANCES (EXCEPT AS NOTED):				DRAWN BY MJD	 Regal Beloit America, Inc.	DESCRIPTION CONN DIAGRAM-EXTERNAL	
ECO ECO-0168744	APPROVED BY MH	DATE 06-21-2019	DEC. .X .XX .XXX .XXXX	INCH ±0.1 ±0.02 ±0.005 ±0.0005	mm [±3] [±0.5] [±0.13] [±0.013]	ANGLE ±7° 30"	DATE 12-19-1997			
ECO DESCRIPTION UPDATED TO CURRENT STANDARDS			REMOVE BURRS & BREAK SHARP EDGES: .003/.015 [.08/.38] X 45° CORNER FILLETS: R.02 [.5] MACHINED SURFACES: 200/ 5.1				APPROVED BY GK	MATERIAL		PROCESS/FINISH
COPYRIGHT (PER REVISION DATE) REGAL BELOIT AMERICA, INC. ALL RIGHTS RESERVED. PROPRIETARY AND CONFIDENTIAL INFORMATION - THIS DOCUMENT IS THE PROPERTY OF REGAL BELOIT AMERICA, INC. ("OWNER") AND CONTAINS OWNER'S PROPRIETARY INFORMATION. ANY PERSON, CORPORATION OR OTHER FIRM RECEIVING IT IS DEEMED, BY RECEIVING IT, TO AGREE THAT IT, AND/OR ANY PART OF IT, SHALL NOT BE DISCLOSED TO ANY PERSON, CORPORATION OR OTHER ENTITY, DUPLICATED, AND/OR USED, EXCEPT AS EXPRESSLY APPROVED IN WRITING IN ADVANCE BY OWNER. THIS DOCUMENT SHALL BE RETURNED TO OWNER UPON REQUEST. IT MAY BE SUBJECT TO CERTAIN RESTRICTIONS UNDER APPLICABLE EXPORT CONTROL LAWS AND REGULATIONS.			mm DIMENSIONS IN [BRACKETS] ARE FOR REFERENCE ONLY				DATE 01-07-1998			
							REFERENCE			
							THIRD ANGLE PROJECTION 	SIZE A	DRAWING NUMBER EE7308AD	SHEET 1 OF 1



P.O. BOX 8003
WAUSAU, WI 54401-8003
PH. 715-675-3311

DATA VOLTS: 460

CERTIFICATION DATA SHEET

CUSTOMER:
ORDER #:
CONN. DIAGRAM: EE7308AD
OUTLINE: SS311282-1275
WINDING: HA31802004 NONE 2
SPEED:

CUSTOMER P.O. #:
REFERENCE MODEL #: 284TSTGCD6505
CAT #: C502
CUSTOMER PART #:
MOUNTING: F1 ONLY

TYPICAL MOTOR PERFORMANCE DATA

HP	KW	SYNC RPM	FL RPM	FRAME	ENCLOSURE	TYPE	KVA CODE	DESIGN
25	18.7	3600	3555	284TSC	EPFC	TFC	G	B

PH	HZ	VOLTS	AMPS	START TYPE	DUTY	INSL	S.F.	AMB	ELEV.
3	60/50	230/460#190/380	60/30&58/29	LINE OR INVERTER	CONT	F	1.15	40	3300

F.L. EFF	91.7	3/4 LD EFF	91.7	1/2 LD EFF	91.0	GTD EFF	91.0	ELECT. TYPE	
F.L. PF	86.0	3/4 LD PF	82.0	1/2 LD PF	73.5	SQ CAGE INV RATED			

F.L. TORQUE	LR AMPS @ 460 V	L.R. TORQUE	B.D. TORQUE	F.L. RISE (°C)	
37.0 LB-FT	181	65.0 LB-FT	176%	94.0 LB-FT 254%	55

SOUND PRESSURE @ 3 FT.	SOUND	POWER	ROTOR WK ²	MAX. LOAD WK ²	SAFE STALL TIME	STARTS/HOUR	APPROX.	MOTOR WGT
75 dBA	84 dBA		2.90 LB-FT ²	30 LB-FT ²	20 SEC.	2	460	LB.

*** SUPPLEMENTAL INFORMATION ***								
DE BRACKET TYPE	ODE BRACKET TYPE	MOUNT TYPE	MOTOR ORIENTATION	SEVERE DUTY	HAZARDOUS LOCATION	DRIP COVER	SCREENS	PAINT
C-FACE	STANDARD	RIGID	HORIZONTAL	PREMIUM SEVERE DUTY	ROOF CL I GR C&D CL II	NO	NONE	BLUE - RAL 5003 (EPOXY)

BEARINGS		GREASE	SHAFT TYPE	SPECIAL DE	SPECIAL ODE	SHAFT	MATERIAL	FRAME MATERIAL
DE	ODE							
BALL	BALL	POLYREX EM	TS	NONE	NONE	1045 HOT ROLLED (C-204)		CAST IRON
6311	6210							

THERMOSTATS	PROTECTORS	WDG RTD's	BRG RTD's	THERMISTORS	CONTROL	SPACE	HEATERS
TSTATS (N/C)	NOT	NONE	NONE	NONE	FALSE		NA

R1 (ohms/ph)	R2 (ohms/ph)	X1 (ohms/ph)	X2 (ohms/ph)	Xm (ohms/ph)	VIBRATION (in/sec)	FLOAT
0.261	0.113	0.826	0.864	24.381	0.080	ODE

* N O T E s *					INVERTER TORQUE: CONSTANT 10:1/VARIABLE 10:1 INV. HP SPEED RANGE: NONE			
					ENCODER: NONE			
					NONE			
					NONE PPR			

PREPARED BY:				BRAKE: NONE			
DATE: 8/30/2021				NONE			
				FT-LB: NA			
				VOLTAGE: NONE			
				HZ:			

FORM: 3531 REV. 4 2/27/06

UL: NO LETTER - ALL BRANDS-UL LISTED AND CSA CERTIFIED DIV. 1 XP MOTORS

