

# PRODUCT INFORMATION PACKET

**marathon®**  
Motors

Model No: 215TTFC6080

Catalog No: GT1114

5 HP General Purpose Motor, 3 phase, 1200 RPM, 575 V, 215T Frame, TEFC  
General Purpose Motors



Regal and Marathon are trademarks of Regal Rexnord Corporation or one of its affiliated companies.  
©2021 Regal Rexnord Corporation, All Rights Reserved. MC017097E

**RegalRexnord**

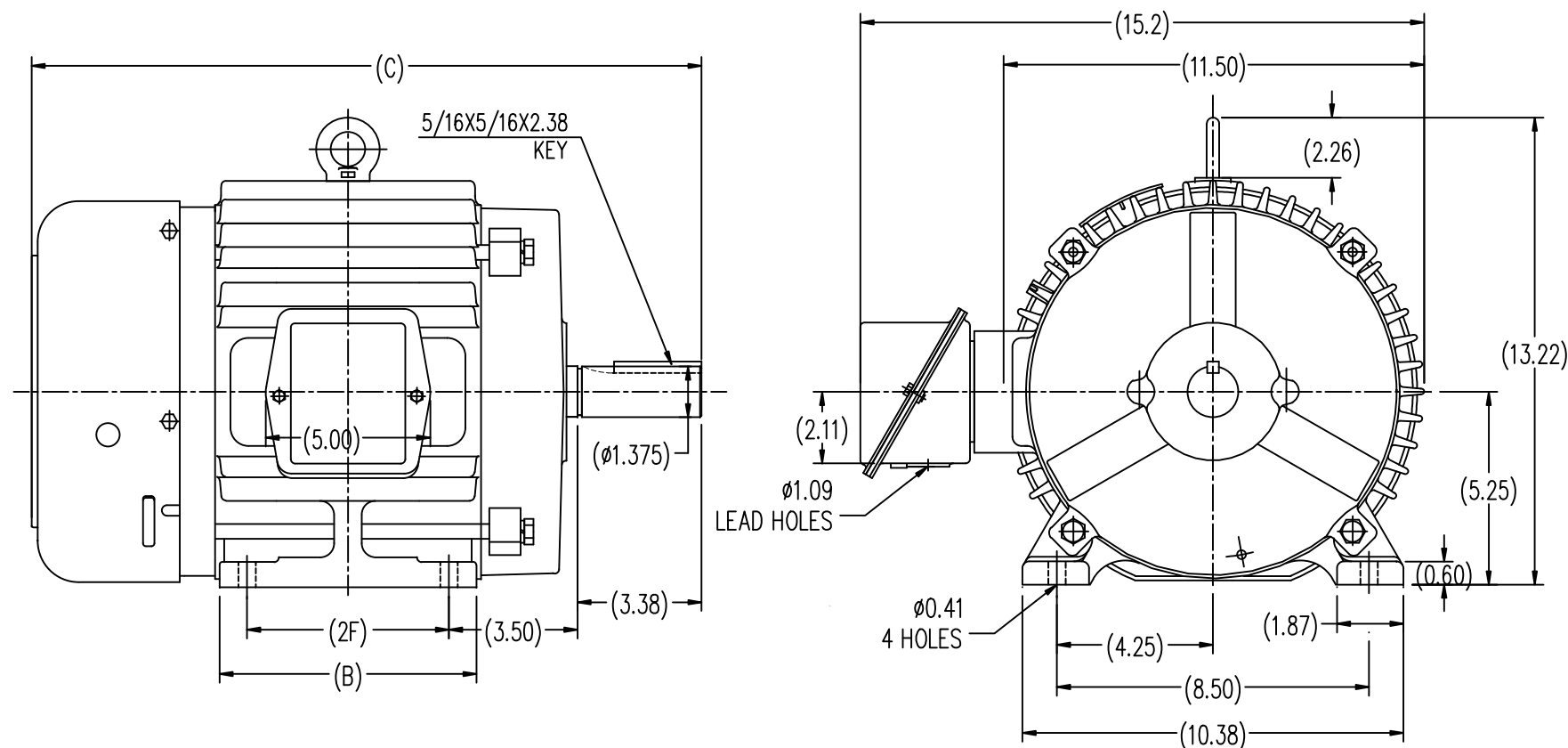
**Nameplate Specifications**

Output HP	5 Hp	Output KW	3.7 kW
Frequency	60 Hz	Voltage	575 V
Current	5.6 A	Speed	1182 rpm
Service Factor	1.15	Phase	3
Efficiency	89.5 %	Power Factor	73
Duty	Continuous	Insulation Class	F
Design Code	B	KVA Code	K
Frame	215T	Enclosure	Totally Enclosed Fan Cooled
Thermal Protection	No	Ambient Temperature	40 °C
Drive End Bearing Size	6307	Opp Drive End Bearing Size	6206
UL	Recognized	CSA	Y
CE	Y	IP Code	43
Number of Speeds	1		


**Technical Specifications**

Electrical Type	Squirrel Cage Induction Run	Starting Method	Across The Line
Poles	6	Rotation	Reversible
Resistance Main	1.625 Ohms	Mounting	Rigid Base
Motor Orientation	Horizontal	Drive End Bearing	Ball
Opp Drive End Bearing	Ball	Frame Material	Cast Iron
Shaft Type	T	Overall Length	19.73 in
Shaft Diameter	1.375 in	Shaft Extension	3.37 in
Assembly/Box Mounting	F1/F2 CAPABLE		
Outline Drawing	SS620291-215T	Connection Drawing	A-EE7300

This is an uncontrolled document once printed or downloaded and is subject to change without notice. Date Created:10/11/2021



213T	7.00	18.23	5.50
215T	8.50	19.73	7.00
FRAME	B	C	2F

		TOLERANCES UNLESS SPECIFIED		 <b>REGAL-BELOIT CORPORATION</b>	DRAWN HZJ 03-05-2010	
		DEC.	INCHES		CHK	ZYH 03-05-2010
		.X	±.1		APPD	CL 03-05-2010
		.XX	±.03		SCALE	1=3
		.XXX	±.005		REF	
		.XXXX	±.0005	TITLE	FMF	HWADA
					PREV	
NO.	REVISION	BY & DATE	CHK	ANG	±1/2-	FINISH
THIS DRAWING IN DESIGN AND DETAIL IS OUR PROPERTY AND MUST NOT BE USED EXCEPT IN CONNECTION WITH OUR WORK ALL RIGHTS OF DESIGN AND INVENTION ARE RESERVED THIS IS AN ELECTRONICALLY GENERATED DOCUMENT - DO NOT SCALE THIS PRINT			RFP			CAD FILE
			DIST			SS620291
						SIZE
						DRAWING NO.
						REV.

**THREE PHASE - SINGLE VOLTAGE  
MOTOR - CONDUIT BOX @ 'A'**

**TO REVERSE ROTATION:  
INTERCHANGE ANY TWO  
LINE LEAD CONNECTIONS.**

**TERMINAL BLOCK WHEN SPECIFIED**



**IF MOTOR HAS  
6 LEADS**



**A-9806 DECAL**

**OPTIONAL CORD  
CONNECTION**



**VIEW OF TERMINAL END**

DRAWING REVISION AB	REVISION BY JJB	DATE 06-27-2017
ECO ECO-0125361	APPROVED BY TB	DATE 06-27-2017
ECO DESCRIPTION <b>UPDATED TO CURRENT STANDARDS</b>		
<small>COPYRIGHT REGAL BELOIT AMERICA, INC. ALL RIGHTS RESERVED.          PROPRIETARY AND CONFIDENTIAL INFORMATION - THIS DOCUMENT IS THE PROPERTY OF          REGAL BELOIT AMERICA, INC. ("OWNER") AND CONTAINS OWNER'S PROPRIETARY          INFORMATION. ANY PERSON, CORPORATION OR OTHER FIRM RECEIVING IT IS DEEMED,          BY RECEIVING IT, TO AGREE THAT IT, AND/OR ANY PART OF IT, SHALL NOT BE DISCLOSED          TO ANY PERSON, CORPORATION OR OTHER ENTITY, DUPLICATED, AND/OR USED, EXCEPT          AS EXPRESSLY APPROVED IN WRITING IN ADVANCE BY OWNER. THIS DOCUMENT SHALL          BE RETURNED TO OWNER UPON REQUEST. IT MAY BE SUBJECT TO CERTAIN          RESTRICTIONS UNDER APPLICABLE EXPORT CONTROL LAWS AND REGULATIONS.</small>		

DRAWN BY DA
DATE 03-26-1993
APPROVED BY TB
DATE 03-26-1993
REFERENCE
THIRD ANGLE PROJECTION



**Regal Beloit America, Inc.**

**DESCRIPTION**  
**CONNECTION DIAGRAM**  
**EXTERNAL - SINGLE VOLTAGE - 3Ø MOTOR**

**MATERIAL** **PROCESS/FINISH**

SIZE <b>A</b>	DRAWING NUMBER <b>EE7300</b>	SHEET 1 OF 1
------------------	---------------------------------	-----------------

## CERTIFICATION DATA SHEET

**Model#:** 215TTFC6080 AA  
**CONN. DIAGRAM:** A-EE7300  
**OUTLINE:** B-SS620291

**WINDING#:** CHT21560001 NONE 3  
**ASSEMBLY:** F1/F2 CAPABLE

## TYPICAL MOTOR PERFORMANCE DATA

HP	KW	SYNC. RPM	F.L. RPM	FRAME	ENCLOSURE	KVA CODE	DESIGN
5	3.70	1200	1182	215T	TEFC	K	B

PH	Hz	VOLTS	FL AMPS	START TYPE	DUTY	INSL	S.F	AMB°C	ELEVATION
3	60	575	5.6	ACROSS THE LINE	CONTINUOUS	F7	1.15	40	3300

FULL LOAD EFF: 89.5	3/4 LOAD EFF: 89.5	1/2 LOAD EFF: 88.5	GTD. EFF	ELEC. TYPE	NO LOAD AMPS
FULL LOAD PF: 73	3/4 LOAD PF: 67	1/2 LOAD PF: 56	88.5	SQ CAGE IND RUN	2.8

F.L. TORQUE	LOCKED ROTOR AMPS	L.R. TORQUE	B.D. TORQUE	F.L. RISE°C
22.2 LB-FT	40.8	45 LB-FT 202	75 LB-FT 335	30

SOUND PRESSURE @ 3 FT.	SOUND POWER	ROTOR WK^2	MAX. WK^2	SAFE STALL TIME	STARTS /HOUR	APPROX. MOTOR WGT
55 dBA	65 dBA	1.5 LB-FT^2	110 LB-FT^2	25 SEC.	2	265 LBS.

## \*\*\* SUPPLEMENTAL INFORMATION \*\*\*

DE BRACKET TYPE	ODE BRACKET TYPE	MOUNT TYPE	ORIENTATION	SEVERE DUTY	HAZARDOUS LOCATION	DRIP COVER	SCREENS	PAINT
STANDARD	STANDARD	RIGID	HORIZONTAL	FALSE	NONE	FALSE	NONE	BLUE (ENAMEL)

BEARINGS		GREASE	SHAFT TYPE	SPECIAL DE	SPECIAL ODE	SHAFT MATERIAL	FRAME MATERIAL
DE	OPE						
BALL	BALL						
6307	6206	POLYREX EM	T	NONE	NONE	1045 HOT ROLLED (C-204)	CAST IRON

THERMO-PROTECTORS				THERMISTORS	CONTROL	SPACE /n HEATERS
THERMOSTATS	PROTECTORS	WDG RTDs	BRG RTDs			
NONE	NOT	NONE	NONE	NONE	FALSE	NONE VOLTS

If Inverter equals NONE, contact factory for further information

INVERTER TORQUE: NONE
INV. HP SPEED RANGE: NONE
ENCODER: NONE
NONE NONE
NONE NONE PPR
BRAKE: NONE NONE
NONE P/N NONE
NONE NONE
NONE FT-LB NONE V NONE Hz

\*  
N  
O  
T  
E  
S  
\*

DATE: 06/22/2017 07:55:31 AM  
 FORM 3531 REV.3 02/07/99  
 \*\* Subject to change without notice.

## Data Sheet

Date: 6/29/2017

Customer: \_\_\_\_\_

Attention: \_\_\_\_\_

Submitted by: FAREEDA DUDEKULA



215TTC6080

Submittal

Data @ 575 V

## Motor Load Data

Load	0%	25%	50%	75%	100%	115%	125%	LR	
Current (Amps)	2.80	3.0	3.7	4.6	5.6	6.3	6.8	40.8	
Torque (ft-lb)	0.00	5.5	11.0	16.6	22.2	25.7	28.0	45.0	
RPM	1200	1195	1192	1188	1182	1,180	1176	0	
Efficiency (%)		84.0	88.5	89.5	89.5	89.5	88.5		
P.F. (%)	5.0	36.0	56.0	67.0	73.0	75.0	76.0	35.0	

## Motor Speed Data

	LR	Pull-Up	BD	Rated	Idle	Information Block				
Speed (RPM)	0	600	1100	1182	1200	HP	5.0			
Current (Amps)	40.8	36.0	24.4	5.6	2.80	Sync. RPM	1200			
Torque (ft-lb)	45.0	40.0	75.0	22.2	0.00	Frame	215			
<div><div>— Efficiency (%) — P.F. (%) — Current (Amps)</div><div>EFFICIENCY (%) P.F. (%) CURRENT (AMPS)</div><div>LOAD</div></div>						Enclosure	TEFC			
						Construction	TFC			
						Voltage	575 V			
						Frequency	60 Hz			
						Design	B			
						LR Code letter	K			
						Service Factor	1.15			
						Temp Rise @ FL	30 ° C			
						Duty	CONT			
						Ambient	40 ° C			
						Elevation	1,000 feet			
						Rotor/Shaft wk²	1.50 Lb-Ft²			
						Ref Wdg	CHT21560001 NONE			
						Sound Pressure @ 1M	55 dBA			
						VFD Rating	NONE			
						Outline Dwg	B-SS620291			
						Conn. Diag	A-EE7300			
Additional Specifications:										
0										
0										
EQUIV CKT (OHMS / PHASE)										
R1		R2		X1		X2		Xm		
1.5090		0.9760		6.7450		9.6740		114.4880		

## Speed -Torque Curve

