

# PRODUCT INFORMATION PACKET



Model No: 215TTFBA4026

Catalog No: E1956

Other Purpose Motor, 10 & 7.50 HP, 3 Ph, 60 & 50 Hz, 208-230/460 & 190/380 V, 1800 & 1500 RPM,  
215T Frame, TEFC

Regal and Marathon are trademarks of Regal Rexnord Corporation or one of its affiliated companies.

©2023 Regal Rexnord Corporation, All Rights Reserved. MC017097E

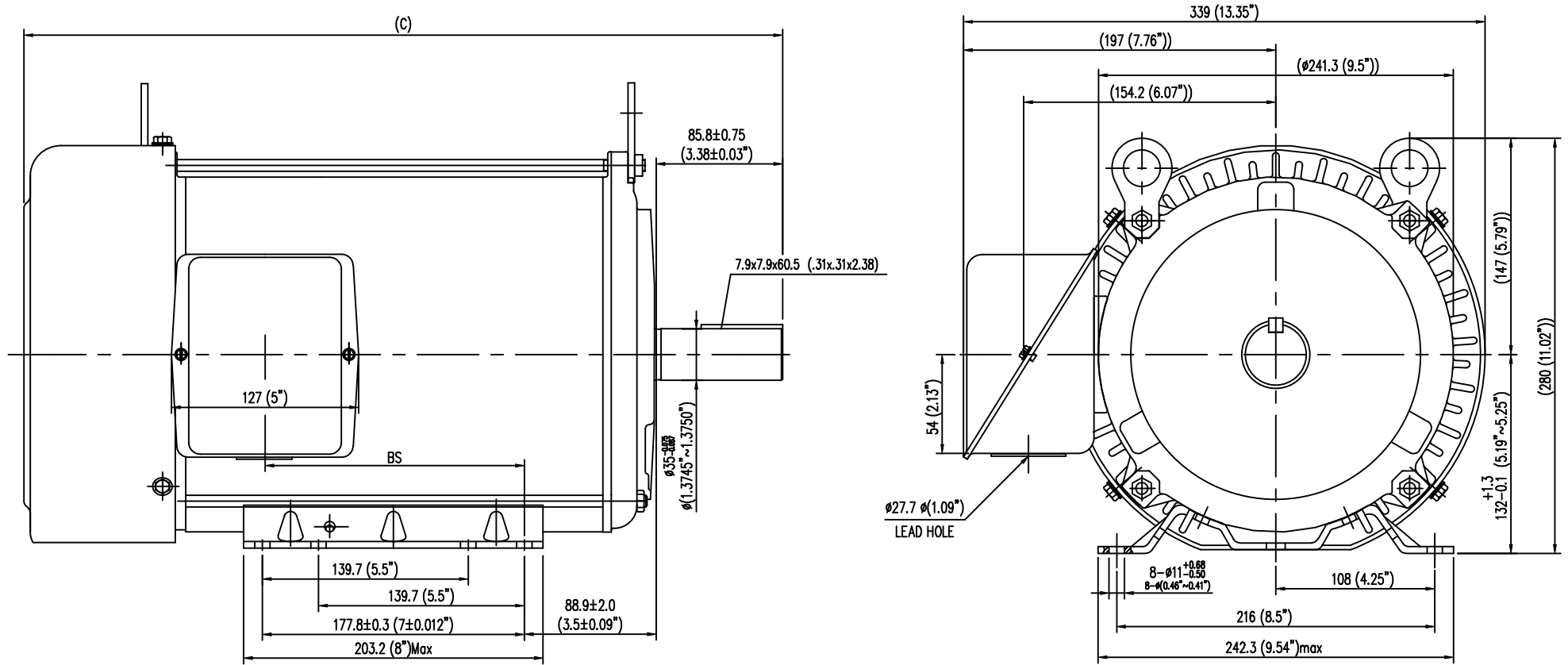


### Nameplate Specifications

Phase	3	Output HP	10 & 7.50 Hp
Output KW	7.5 & 5.6 kW	Voltage	208-230/460 & 190/380 V
Speed	1765 & 1470 rpm	Service Factor	1.15 & 1.15
Frame	215T	Enclosure	Totally Enclosed Fan Cooled
Thermal Protection	No Protection	Efficiency	89.5 & 91 %
Ambient Temperature	40 °C	Frequency	60 & 50 Hz
Current	27.6-25/12.5 & 23/11.5 A	Power Factor	84
Duty	Continuous	Insulation Class	F
Design Code	B	KVA Code	H
Drive End Bearing Size	6307	Opp Drive End Bearing Size	6206
UL	Recognized	CSA	Y
CE	Y	IP Code	43
Number of Speeds	1		

### Technical Specifications

Electrical Type	Squirrel Cage Induction Run	Starting Method	Across The Line
Poles	4	Rotation	Reversible
Resistance Main	.771 Ohms	Mounting	Rigid Base
Motor Orientation	Horizontal	Drive End Bearing	Ball
Opp Drive End Bearing	Ball	Frame Material	Rolled Steel
Shaft Type	T	Overall Length	20.24 in
Shaft Diameter	1.375 in	Shaft Extension	3.38 in
Assembly/Box Mounting	F1/F2 CAPABLE		
Connection Drawing	A-EE7308	Outline Drawing	A-SS620045



TYPE	C	BS
213T-4-7.5HP TTFBA4026	476(18.74") <sub>Max</sub>	138(5.43")
215T-4-10HP TTFBA4026	514(20.24") <sub>Max</sub>	176(6.93")

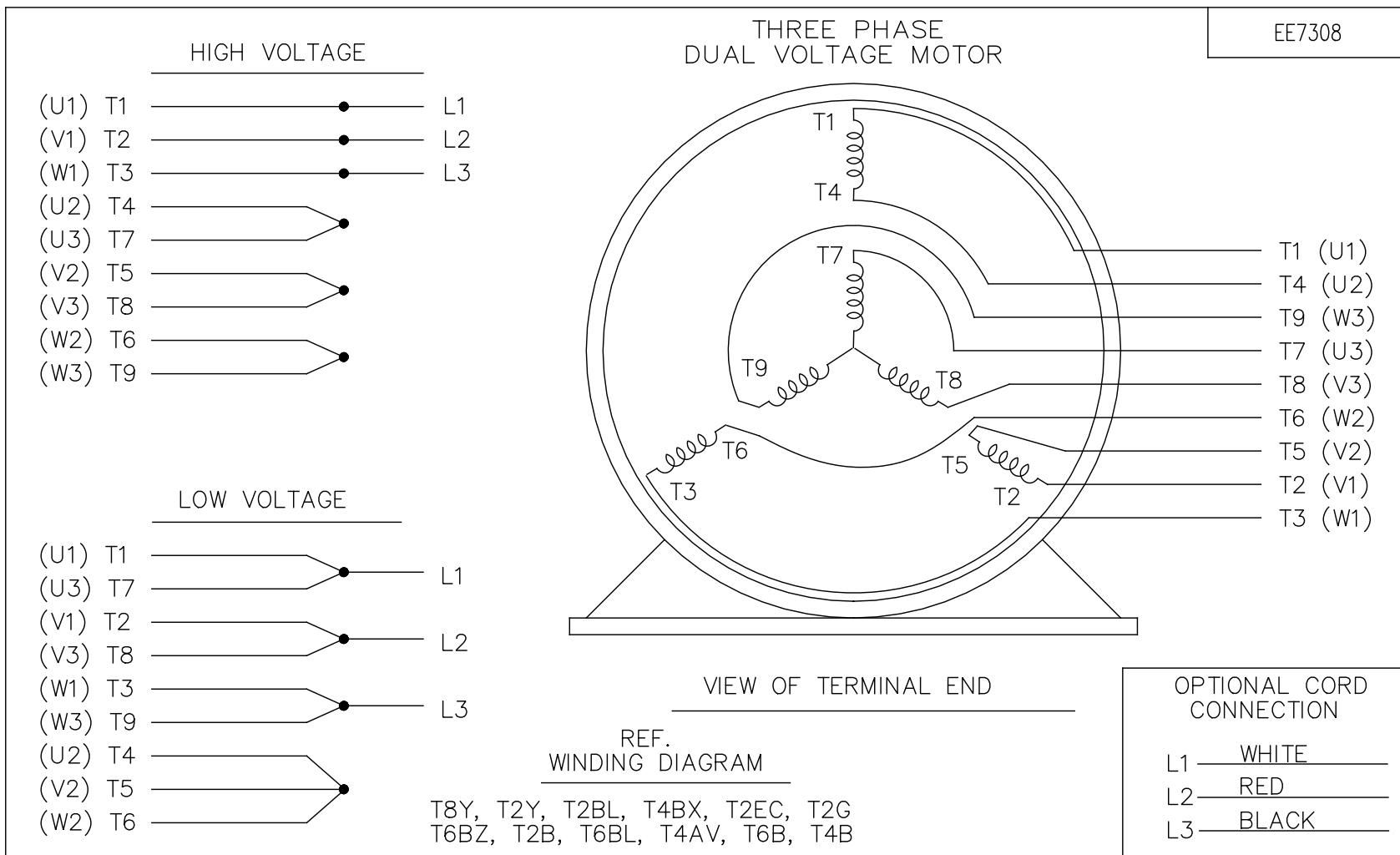
(MAY NOT BE DRAWN TO SCALE)

TOLERANCES UNLESS SPECIFIED			MARATHON ELECTRIC		DRAWN MSG 03-27-2007	
DEC.	INCHES				CHK	ML 03-27-2007
.X	±	-			APPD	GK 03-27-2007
.XX	±	-			SCALE	.015=1
.XXX	±	-			REF	
.XXXX	±	-			FMF	HUADA
NO.	REVISION	BY & DATE	CHK	ANG	PREV	
THIS DRAWING IN DESIGN AND DETAIL IS OUR PROPERTY AND MUST NOT BE USED EXCEPT IN CONNECTION WITH OUR WORK ALL RIGHTS OF DESIGN AND INVENTION ARE RESERVED THIS IS AN ELECTRONICALLY GENERATED DOCUMENT - DO NOT SCALE THIS PRINT			RFP	CAD FILE SS620045	SIZE	DRAWING NO. PAGE OF REV.
			DIST	CHA	B	SS620045

ERROR: syntaxerror  
OFFENDING COMMAND: --nostringval--

STACK:

/RS  
-dictionary-  
/Pscript\_WinNT\_Compat  
-dictionary-



NO.	REVISION	BY & DATE	CHK	ANG	TOLERANCES UNLESS SPECIFIED		RFP	CAD FILE	SIZE	DRAWING NO.	PAGE	OF	REV.
					DEC.	INCHES							
5	CHG TO REGAL LOGO	SL 09/10/2015	AB		DEC.	INCHES							
4	REVISED IEC NOTATIONS	MSG 11/15/2011	CMN	.X		±.1							
3	ADDED IEC NOTATIONS... (U1), (V1) ETC. MU95194	MSG 5/10/2010	MJS	.XX		±.02							
2	ADDED THE OPTIONAL CORD CONNECTION MU46318	RDH 04/24/2003	DRS	.XXX		±.005							
1	REDRAWN	RM 11/20/1990		.XXXX		±.0005							
						±7'30"							
THIS DRAWING IN DESIGN AND DETAIL IS OUR PROPERTY AND MUST NOT BE USED EXCEPT IN CONNECTION WITH OUR WORK ALL RIGHTS OF DESIGN AND INVENTION ARE RESERVED THIS IS AN ELECTRONICALLY GENERATED DOCUMENT - DO NOT SCALE THIS PRINT								CAD FILE ee7308	A	EE7308			5