

PRODUCT INFORMATION PACKET

marathon®
Motors

Model No: 215TTDW7301

Catalog No: Y304

Crop Dryer Motor, 10 & 15 HP, 3 Ph, 60 & 60 Hz, 208-220/440 & 208-220/440 V, 3600 & 3600 RPM,
215TZ Frame, DPAO



Regal and Marathon are trademarks of Regal Rexnord Corporation or one of its affiliated companies.

©2023 Regal Rexnord Corporation, All Rights Reserved. MC017097E

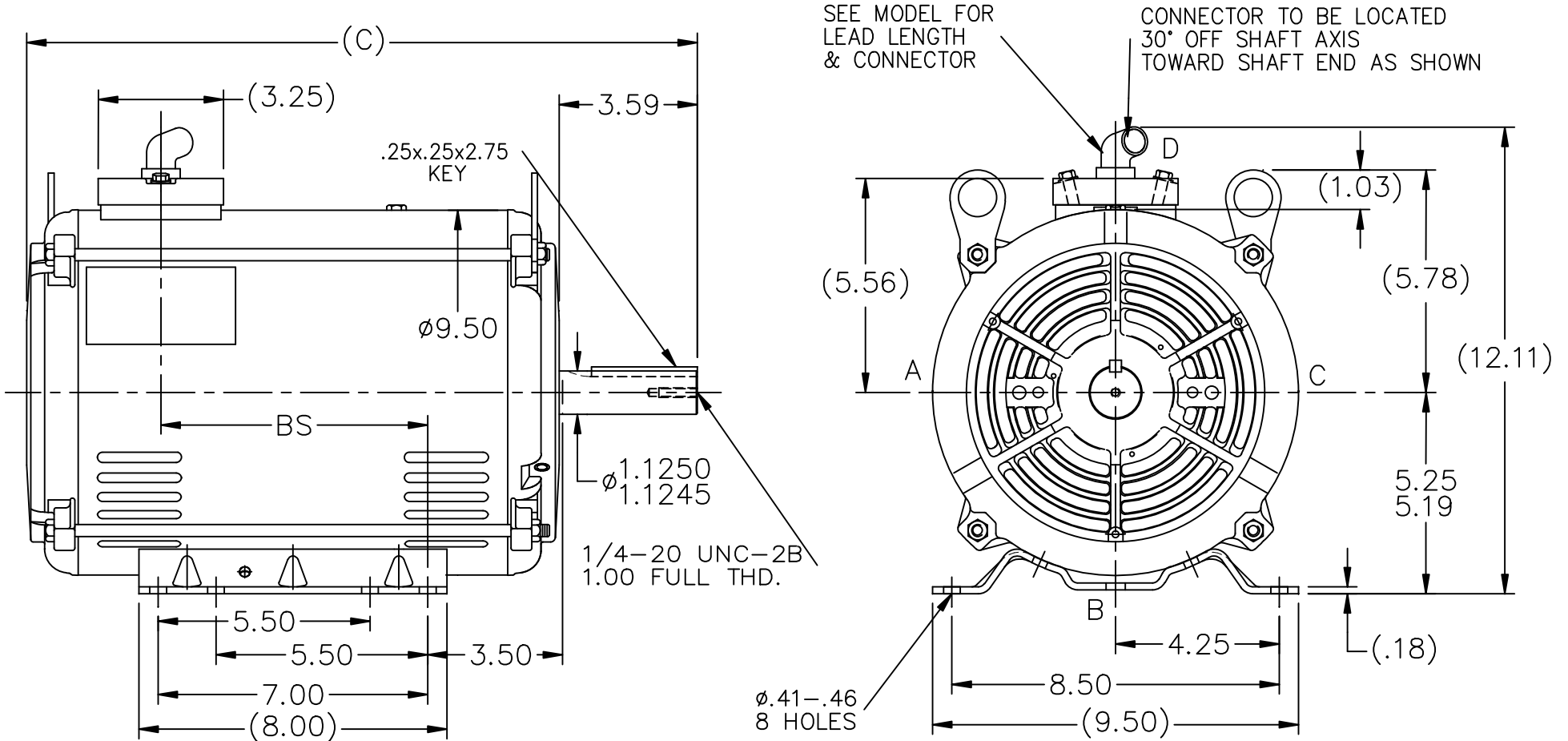
RegalRexnord

Nameplate Specifications

Phase	3	Output HP	10 & 15 Hp
Output KW	7.5 & 11.2 kW	Voltage	208-220/440 & 208-220/440 V
Speed	3470 & 3385 rpm	Service Factor	1.5 & 1.0
Frame	215TZ	Enclosure	Drip Proof Air Over
Thermal Protection	No Protection	Efficiency	85.5 & 81.5 %
Ambient Temperature	40 °C	Frequency	60 & 60 Hz
Current	28-26/13 & 42-40/20 A	Power Factor	87
Duty	Continuous	Insulation Class	F
Design Code	B	KVA Code	G
Drive End Bearing Size	6307	Opp Drive End Bearing Size	6206
UL	Recognized	CSA	Y
CE	N	IP Code	23
Number of Speeds	1		

Technical Specifications

Electrical Type	Squirrel Cage Induction Run	Starting Method	Across The Line
Poles	2	Rotation	Reversible
Resistance Main	1.8 Ohms	Mounting	Rigid Base
Motor Orientation	Horizontal	Drive End Bearing	Ball
Opp Drive End Bearing	Ball	Frame Material	Rolled Steel
Shaft Type	Single Special Extension	Overall Length	17.41 in
Frame Length	11.15 in	Shaft Diameter	1.125 in
Shaft Extension	3.59 in	Assembly/Box Mounting	F3
Outline Drawing	A-SS86606-1115	Connection Drawing	A-EE7308T

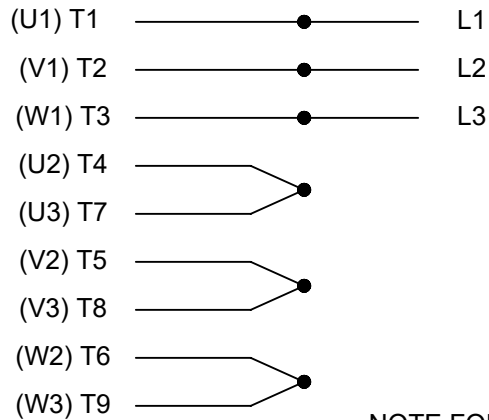


DASH	FR.	C	BS
965	213T	15.91	5.43
1115	213/15T	17.41	6.93
1240	213/15T	18.66	8.18

- NOTES:
1. NAMEPLATE TO BE READ FROM "A" SIDE OF MOTOR.
 2. SEE MODEL FOR LEAD LENGTH.

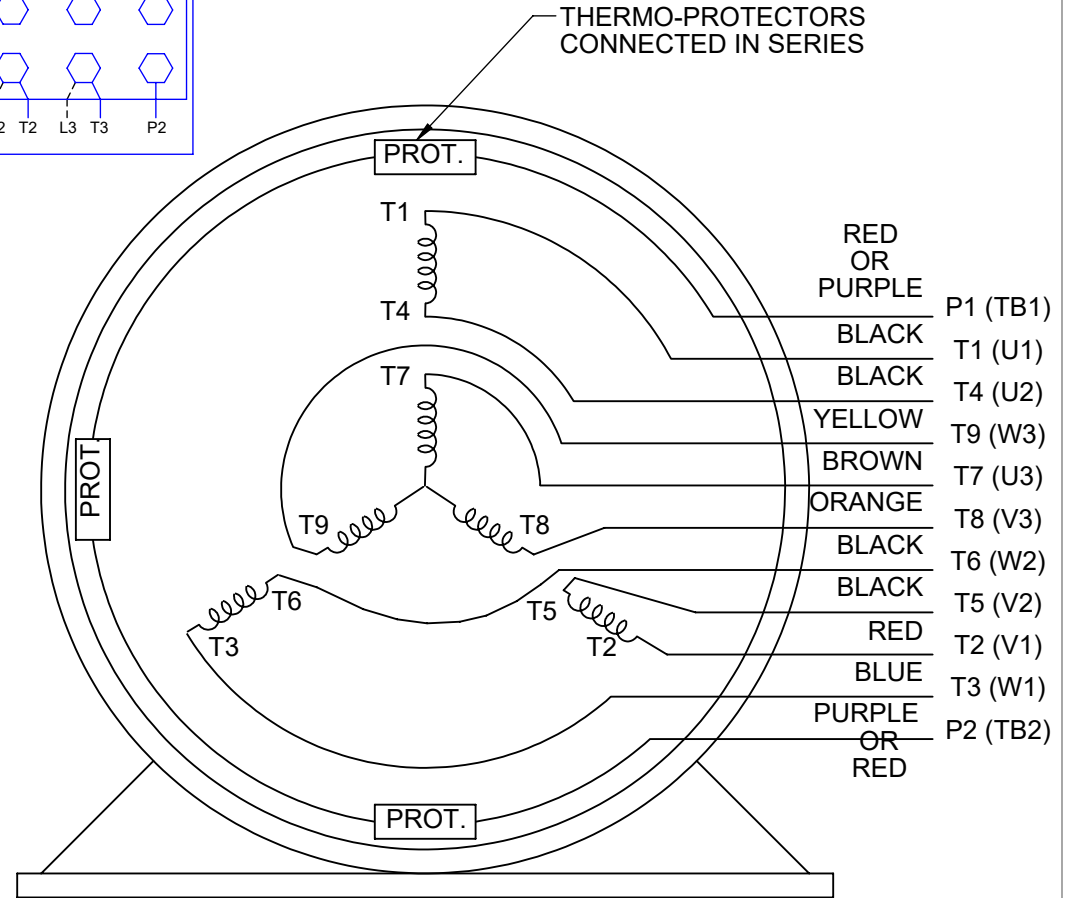
				TOLERANCES UNLESS SPECIFIED		MARATHON ELECTRIC	DRAWN MRB 04-15-1996					
				DEC.	INCHES		CHK	ML	05-17-1996			
4	REPLACED ADAPTER PLATE W/LEESON PLATE	07-1734	MSG	11-12-2008	MSG	.X	±.1	APPD	DN	05-17-1996		
3	REVISION NO SHOULDER ON SHAFT EXT	CN 23925-407	MH	11-07-1997		.XX	±.03	SCALE	1=4			
2	ADDED CONNECTOR & CONNECTOR NOTES RE-ISSUE		MRB	01-22-1997		.XXX	±.005	REF				
1	NEW DRAWING	DES./DEV.	MRB	05-22-1996		.XXXX	±.0005	FMF				
NO.	REVISION		BY & DATE	CHK	ANG	±7'30"		FINISH	PREV			
THIS DRAWING IN DESIGN AND DETAIL IS OUR PROPERTY AND MUST NOT BE USED EXCEPT IN CONNECTION WITH OUR WORK ALL RIGHTS OF DESIGN AND INVENTION ARE RESERVED THIS IS AN ELECTRONICALLY GENERATED DOCUMENT - DO NOT SCALE THIS PRINT				RFP	CAD FILE ss86606			SIZE	DRAWING NO.	PAGE	OF	REV.
				DIST	LB			A	SS86606			4

HIGH VOLTAGE



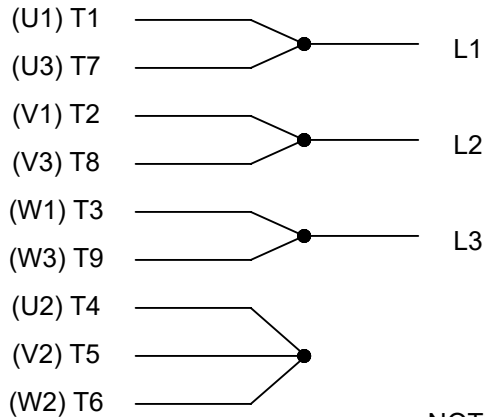
**THREE PHASE
DUAL VOLTAGE MOTOR**

THERMO-PROTECTORS
CONNECTED IN SERIES



NOTE FOR FACTORY USE ONLY:
TO SURGE TEST FOR COMMON CONNECT:
HIGH VOLT: CONNECT P1 TO T1
THEN P2 TO L1
LOW VOLT: CONNECT P1 TO T1 & T7,
THEN P2 TO L1

LOW VOLTAGE



VIEW OF TERMINAL END

NOTE: LEAD'S COLOR CAN BE YELLOW OR WHITE FOR MT2 PLANT

DRAWING REVISION T	REVISION BY ZR	DATE 01-14-2019		DRAWN BY SMC	Regal Beloit America, Inc.
ECO ECO-0159915	APPROVED BY DR	DATE 01-15-2019		DATE 05-13-1992	
ECO DESCRIPTION ADDED TERMINAL CONNECTION DIAGRAM				APPROVED BY TB	DESCRIPTION CONN DIAGRAM-INTERNAL 3 PHASE - DUAL VOLTAGE MOTOR
<small>COPYRIGHT REGAL BELOIT AMERICA, INC. ALL RIGHTS RESERVED. PROPRIETARY AND CONFIDENTIAL INFORMATION - THIS DOCUMENT IS THE PROPERTY OF REGAL BELOIT AMERICA, INC. ("OWNER") AND CONTAINS OWNER'S PROPRIETARY INFORMATION. ANY PERSON, CORPORATION OR OTHER FIRM RECEIVING IT IS DEEMED, BY RECEIVING IT, TO AGREE THAT IT, AND/OR ANY PART OF IT, SHALL NOT BE DISCLOSED TO ANY PERSON, CORPORATION OR OTHER ENTITY, DUPLICATED, AND/OR USED, EXCEPT AS EXPRESSLY APPROVED IN WRITING IN ADVANCE BY OWNER. THIS DOCUMENT SHALL BE RETURNED TO OWNER UPON REQUEST. IT MAY BE SUBJECT TO CERTAIN RESTRICTIONS UNDER APPLICABLE EXPORT CONTROL LAWS AND REGULATIONS.</small>				DATE 05-13-1992	MATERIAL
			REFERENCE EE7308/EE7300	SIZE A	DRAWING NUMBER EE7308T

Data Sheet

Date: 19-06-2017
Customer: _____
Attention: _____
Submitted by: FAREEDA DUDEKULA



215TTDW7301

Submittal

Data @ **440 V**

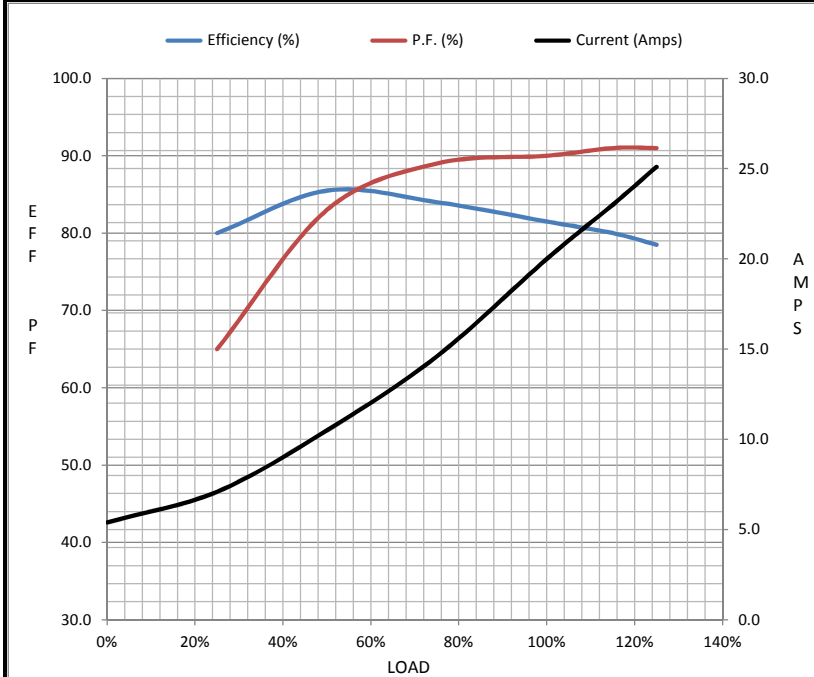
Motor Load Data

Load	0%	25%	50%	75%	100%	115%	125%	LR
Current (Amps)	5.4	7.1	10.5	14.6	20.0	23.0	25.1	80.0
Torque (ft-lb)	0.00	5.6	11.2	17.0	23.5	27.0	29.5	22.5
RPM	3600	3555	3505	3455	3385	3,360	3350	0
Efficiency (%)		80.0	85.5	84.0	81.5	80.0	78.5	
P.F. (%)	10.5	65.0	83.0	89.0	90.0	91.0	91.0	54.5

Motor Speed Data

	LR	Pull-Up	BD	Rated	Idle
Speed (RPM)	0	1800	2830	3385	3600
Current (Amps)	80.0	69.0	48.1	20.0	5.4
Torque (ft-lb)	22.5	20.5	38.5	23.5	0.00

Information Block				
HP	15.0			
Sync. RPM	3600			
Frame	213			
Enclosure	DP			
Construction	TDW			
Voltage	220/440#208-221V			
Frequency	60 Hz			
Design	B			
LR Code letter	G			
Service Factor	1.15			
Temp Rise @ FL	0 °C			
Duty	CONT			
Ambient	40 °C			
Elevation	1,000 feet			
Rotor/Shaft wk ²	0.33 Lb-Ft ²			
Ref Wdg	K213279 R2			
Sound Pressure @ 1M	75 dBA			
VFD Rating	NONE			
Outline Dwg	A-SS86606-1115			
Conn. Diag	A-EE7308T			
Additional Specifications:				
0				
365THFS8036				
EQUIV CKT (OHMS / PHASE)				
R1	R2	X1	X2	Xm
1.0690	0.6920	2.1630	0.7530	54.8410



Speed - Torque Curve

