

PRODUCT INFORMATION PACKET

marathon®
Motors

Model No: 215TTDC6003

Catalog No: U286

15 HP General Purpose Motor, 3 phase, 3600 RPM, 575 V, 215T Frame, ODP
General Purpose Motors



Regal and Marathon are trademarks of Regal Rexnord Corporation or one of its affiliated companies.
©2021 Regal Rexnord Corporation, All Rights Reserved. MC017097E

RegalRexnord

Nameplate Specifications

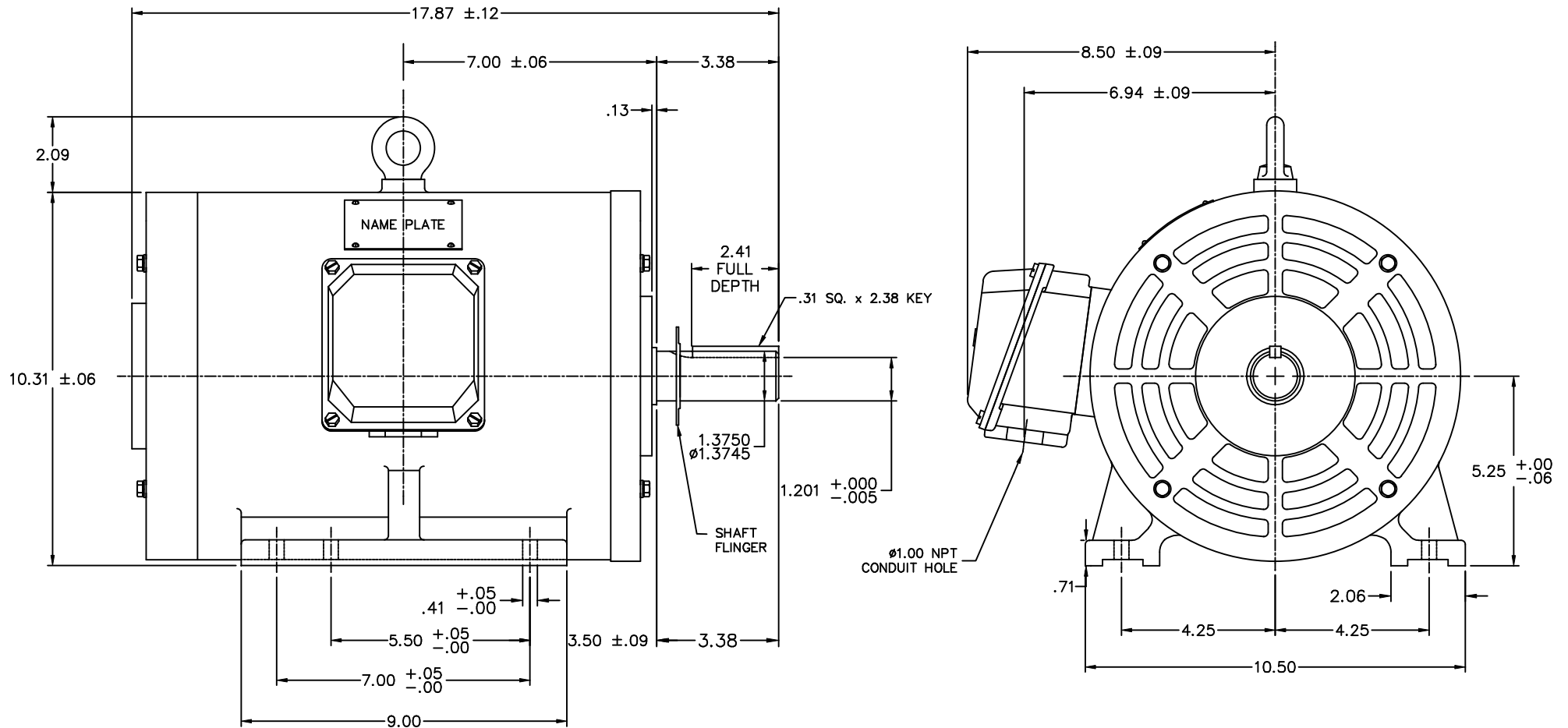
Output HP	15 Hp	Output KW	11.2 kW
Frequency	60 Hz	Voltage	575 V
Current	13.9 A	Speed	3510 rpm
Service Factor	1.15	Phase	3
Efficiency	91 %	Power Factor	89
Duty	Continuous	Insulation Class	F
Design Code	B	KVA Code	H
Frame	215T	Enclosure	Drip Proof
Thermal Protection	No	Ambient Temperature	40 °C
Drive End Bearing Size	6308	Opp Drive End Bearing Size	6208
UL	Recognized	CSA	Y
CE	Y	IP Code	22
Number of Speeds	1		


Technical Specifications

Electrical Type	Squirrel Cage Inverter Rated	Starting Method	Line Or Inverter
Poles	2	Rotation	Reversible
Resistance Main	.736 Ohms	Mounting	Rigid Base
Motor Orientation	Horizontal	Drive End Bearing	Ball
Opp Drive End Bearing	Ball	Frame Material	Cast Iron
Shaft Type	T	Overall Length	17.87 in
Shaft Diameter	1.375 in	Shaft Extension	3.38 in
Assembly/Box Mounting	F1/F2 Capable		
Outline Drawing	169550.60ME	Connection Drawing	00510201ME

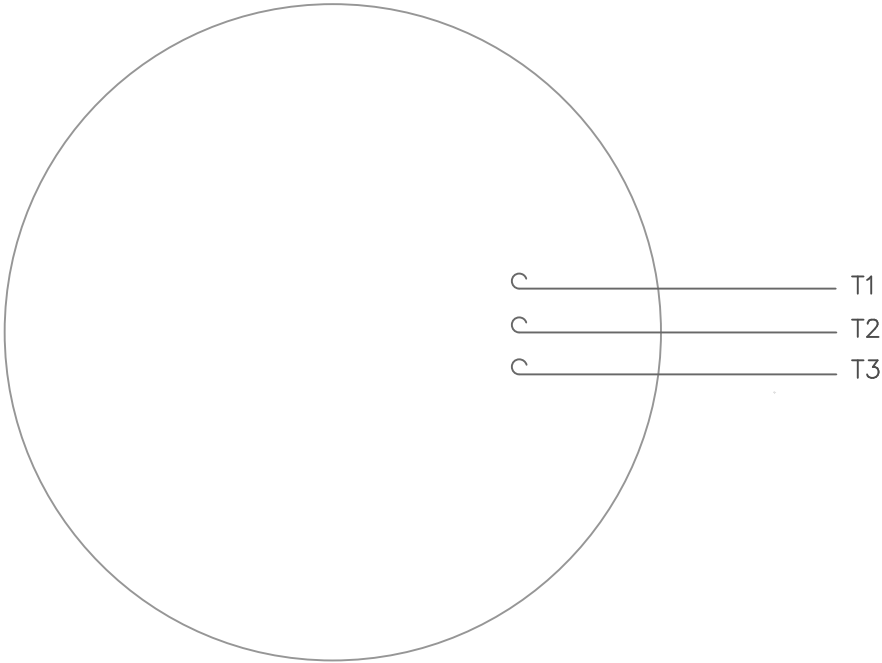
This is an uncontrolled document once printed or downloaded and is subject to change without notice. Date Created:10/12/2021

169550-60ME




						TOLERANCES UNLESS SPECIFIED		DRAWN CTO 04-23-2002		
					DEC.	INCHES		CHK ML 05-20-2002		
					.X	±.1		APPD SB 05-21-2002		
					.XX	±.03	TITLE OUTLINE - 21ST FRAME ODP, RIGID MOUNT, NEW CON-BOX	SCALE 1=1		
					.XXX	±.005		REF 169515		
1	NEW DRAWING	CTO 04/23/02			.XXXX	±.0005		FMF		
NO.	REVISION	BY & DATE	CHK	ANG	±1/2"	FINISH	PREV			
THIS DRAWING IN DESIGN AND DETAIL IS OUR PROPERTY AND MUST NOT BE USED EXCEPT IN CONNECTION WITH OUR WORK ALL RIGHTS OF DESIGN AND INVENTION ARE RESERVED THIS IS AN ELECTRONICALLY GENERATED DOCUMENT - DO NOT SCALE THIS PRINT						RFP	CAD FILE 16955060me	SIZE B	DRAWING NO. 169550-60ME	REV. 1
						DIST				

VIEW FROM OUTSIDE OF MOTOR AT SWITCH END.



CONNECT LEADS AS FOLLOWS FOR FOUR CONDUCTOR CORD ()				
CORD	L1 (RED)	L2 (WHITE)	L3 (BLACK)	(GREEN)
MOTOR	T1	T2	T3	GROUND

				TOLERANCES UNLESS SPECIFIED			DRAWN RDW 5/1/02		
				DEC.	INCHES		CHK		
				.X	±.1		APPD		
				.XX	±.01		SCALE 1=1		
				.XXX	±.005		REF		
				.XXXX	±.0005	MAT'L. DECAL - 004169		FMF	
NO.	REVISION	BY & DATE	CHK	ANG	±1/2°	FINISH		PREV	
THIS DRAWING IN DESIGN AND DETAIL IS OUR PROPERTY AND MUST NOT BE USED EXCEPT IN CONNECTION WITH OUR WORK ALL RIGHTS OF DESIGN AND INVENTION ARE RESERVED THIS IS AN ELECTRONICALLY GENERATED DOCUMENT - DO NOT SCALE THIS PRINT			RFP 5/1/02		CAD FILE 00510201ME		SIZE A	DRAWING NO. 005102-01ME	REV.
			DIST						

CERTIFICATION DATA SHEET

Model#: 215TTDC6003 AA

WINDING#: T10702011 NONE 4

CONN. DIAGRAM: 00510201ME

ASSEMBLY: F1/F2 CAPABLE

OUTLINE: 169550.60ME

TYPICAL MOTOR PERFORMANCE DATA

HP	KW	SYNC. RPM	F.L. RPM	FRAME	ENCLOSURE	KVA CODE	DESIGN
15	11.2	3600	3510	215T	DP	H	B

PH	Hz	VOLTS	FL AMPS	START TYPE	DUTY	INSL	S.F	AMB°C	ELEVATION
3	60	575	13.9	LINE OR INVERTER	CONTINUOUS	F5	1.15	40	3300

FULL LOAD EFF: 91	3/4 LOAD EFF: 91	1/2 LOAD EFF: 91	GTD. EFF	ELEC. TYPE	NO LOAD AMPS
FULL LOAD PF: 89	3/4 LOAD PF: 88	1/2 LOAD PF: 82.1	90.2	SQ CAGE INV RATED	3.8

F.L. TORQUE	LOCKED ROTOR AMPS	L.R. TORQUE	B.D. TORQUE	F.L. RISE°C
22.6 LB-FT	92.8	46.1 LB-FT 204	70.9 LB-FT 314	60

SOUND PRESSURE @ 3 FT.	SOUND POWER	ROTOR WK^2	MAX. WK^2	SAFE STALL TIME	STARTS /HOUR	APPROX. MOTOR WGT
79 dBA	89 dBA	- LB-FT^2	- LB-FT^2	- SEC.	-	184 LBS.

*** SUPPLEMENTAL INFORMATION ***

DE BRACKET TYPE	ODE BRACKET TYPE	MOUNT TYPE	ORIENTATION	SEVERE DUTY	HAZARDOUS LOCATION	DRIP COVER	SCREENS	PAINT
STANDARD	STANDARD	RIGID	HORIZONTAL	FALSE	NONE	FALSE	NONE	BLUE (ENAMEL)

BEARINGS		GREASE	SHAFT TYPE	SPECIAL DE	SPECIAL ODE	SHAFT MATERIAL	FRAME MATERIAL
DE	OPE						
BALL	BALL						
6308	6208	POLYREX EM	T	NONE	NONE	1045 HOT ROLLED (C-204)	CAST IRON

THERMO-PROTECTORS				THERMISTORS	CONTROL	SPACE /n HEATERS
THERMOSTATS	PROTECTORS	WDG RTDs	BRG RTDs			
NONE	NOT	NONE	NONE	NONE	FALSE	NONE VOLTS

If Inverter equals NONE, contact factory for further information

* N O T E S *	INVERTER TORQUE: CONSTANT 10:1					
	INV. HP SPEED RANGE: 1.5 X BASE SPEED					
	ENCODER: NONE					
	NONE NONE					
	NONE NONE PPR					
	BRAKE: NONE NONE					
	NONE P/N NONE					
	NONE NONE					
	NONE FT-LB		NONE V		NONE Hz	

DATE: 06/22/2017 07:21:43 AM

FORM 3531 REV.3 02/07/99

** Subject to change without notice.

Data Sheet

Date: 6/29/2017

Customer: _____

Attention: _____

Submitted by: FAREEDA DUDEKULA



215TTDC6003

Submittal

Data @ 575 V

Motor Load Data

Load	0%	25%	50%	75%	100%	115%	125%	LR	
Current (Amps)	3.8	5.1	7.7	10.6	13.8	16.0	17.3	92.8	
Torque (ft-lb)	0.00	5.7	11.3	17.0	22.6	26.0	28.2	46.1	
RPM	3600	3580	3560	3535	3510	3,495	3485	0	
Efficiency (%)		88.5	91.0	91.0	91.0	90.2	89.5		
P.F. (%)	9.4	64.5	82.1	88.0	89.0	89.5	90.0	0.0	

Motor Speed Data

	LR	Pull-Up	BD	Rated	Idle					
Speed (RPM)	0	1800	2960	3510	3600					
Current (Amps)	92.8	85.4	60.4	13.8	3.8					
Torque (ft-lb)	46.1	39.6	70.9	22.6	0.00					

Efficiency (%)

P.F. (%)

Current (Amps)

Load (%)	Efficiency (%)	P.F. (%)	Current (Amps)
0	-	-	3.8
25	88.5	64.5	4.5
50	91.0	82.0	6.5
75	91.0	88.0	9.0
100	90.0	90.0	13.8
125	89.0	90.0	18.5

HP	15.0			
Sync. RPM	3600			
Frame	215			
Enclosure	DP			
Construction	TDC			
Voltage	575 V			
Frequency	60 Hz			
Design	A			
LR Code letter	H			
Service Factor	1.15			
Temp Rise @ FL	60 ° C			
Duty	CONT			
Ambient	40 ° C			
Elevation	1,000 feet			
Rotor/Shaft wk²	0.00 Lb-Ft²			
Ref Wdg	T10702011 NONE			
Sound Pressure @ 1M	79 dBA			
VFD Rating	CONSTANT 10:1			
Outline Dwg	169550.60ME			
Conn. Diag	5102.01			
Additional Specifications:				
0				
0				
EQUIV CKT (OHMS / PHASE)				
R1	R2	X1	X2	Xm
0.0000	0.0000	0.0000	0.0000	0.0000

Speed -Torque Curve

