

# PRODUCT INFORMATION PACKET

Model No: 215TCDW7004

Catalog No: Z431

Close-Coupled Pump Motor, 10 HP, 1 Ph, 60 Hz, 230 V, 3600 RPM, 215JP Frame, DP

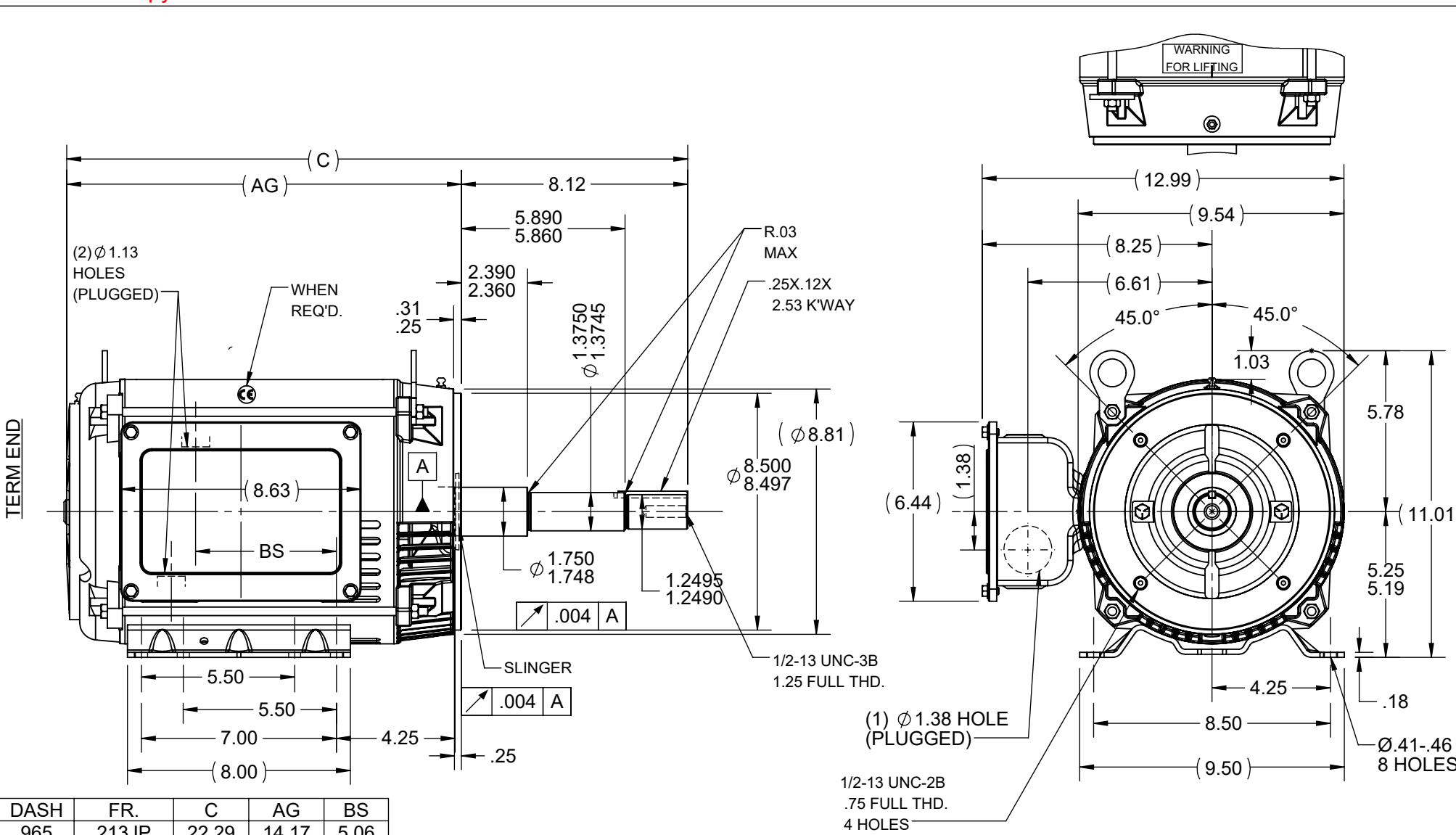


### Nameplate Specifications

|                        |                      |                            |                   |
|------------------------|----------------------|----------------------------|-------------------|
| Output HP              | <b>10 Hp</b>         | Output KW                  | <b>7.5 kW</b>     |
| Frequency              | <b>60 Hz</b>         | Voltage                    | <b>230 V</b>      |
| Current                | <b>47.0 A</b>        | Speed                      | <b>3465 rpm</b>   |
| Service Factor         | <b>1.15</b>          | Phase                      | <b>1</b>          |
| Efficiency             | <b>81.5 %</b>        | Power Factor               | <b>84</b>         |
| Duty                   | <b>Continuous</b>    | Insulation Class           | <b>F</b>          |
| Design Code            | <b>L</b>             | KVA Code                   | <b>G</b>          |
| Frame                  | <b>215JP</b>         | Enclosure                  | <b>Drip Proof</b> |
| Thermal Protection     | <b>No Protection</b> | Ambient Temperature        | <b>40 °C</b>      |
| Drive End Bearing Size | <b>6309</b>          | Opp Drive End Bearing Size | <b>6206</b>       |
| UL                     | <b>Recognized</b>    | CSA                        | <b>Y</b>          |
| CE                     | <b>Y</b>             | IP Code                    | <b>22</b>         |
| Number of Speeds       | <b>1</b>             |                            |                   |

### Technical Specifications

|                       |                                      |                       |                                   |
|-----------------------|--------------------------------------|-----------------------|-----------------------------------|
| Electrical Type       | <b>Capacitor Start Induction Run</b> | Starting Method       | <b>Across The Line</b>            |
| Poles                 | <b>2</b>                             | Rotation              | <b>Selective Counterclockwise</b> |
| Resistance Main       | <b>0 Ohms</b>                        | Mounting              | <b>Rigid Base</b>                 |
| Motor Orientation     | <b>Horizontal</b>                    | Drive End Bearing     | <b>Ball</b>                       |
| Opp Drive End Bearing | <b>Ball</b>                          | Frame Material        | <b>Rolled Steel</b>               |
| Shaft Type            | <b>JP</b>                            | Overall Length        | <b>23.81 in</b>                   |
| Frame Length          | <b>11.15 in</b>                      | Shaft Diameter        | <b>1.250 in</b>                   |
| Shaft Extension       | <b>8.15 in</b>                       | Assembly/Box Mounting | <b>F1 ONLY</b>                    |
| Outline Drawing       | <b>037644-1115</b>                   | Connection Drawing    | <b>A-EE7090JR</b>                 |



| DASH | FR.      | C     | AG    | BS   |
|------|----------|-------|-------|------|
| 965  | 213JP    | 22.29 | 14.17 | 5.06 |
| 1115 | 213/15JP | 23.79 | 15.67 | 6.56 |
| 1240 | 213/15JP | 25.04 | 16.92 | 7.81 |

NOTE:  
1. NAMEPLATE TO BE READ FROM C'BOX SIDE OF MOTOR.

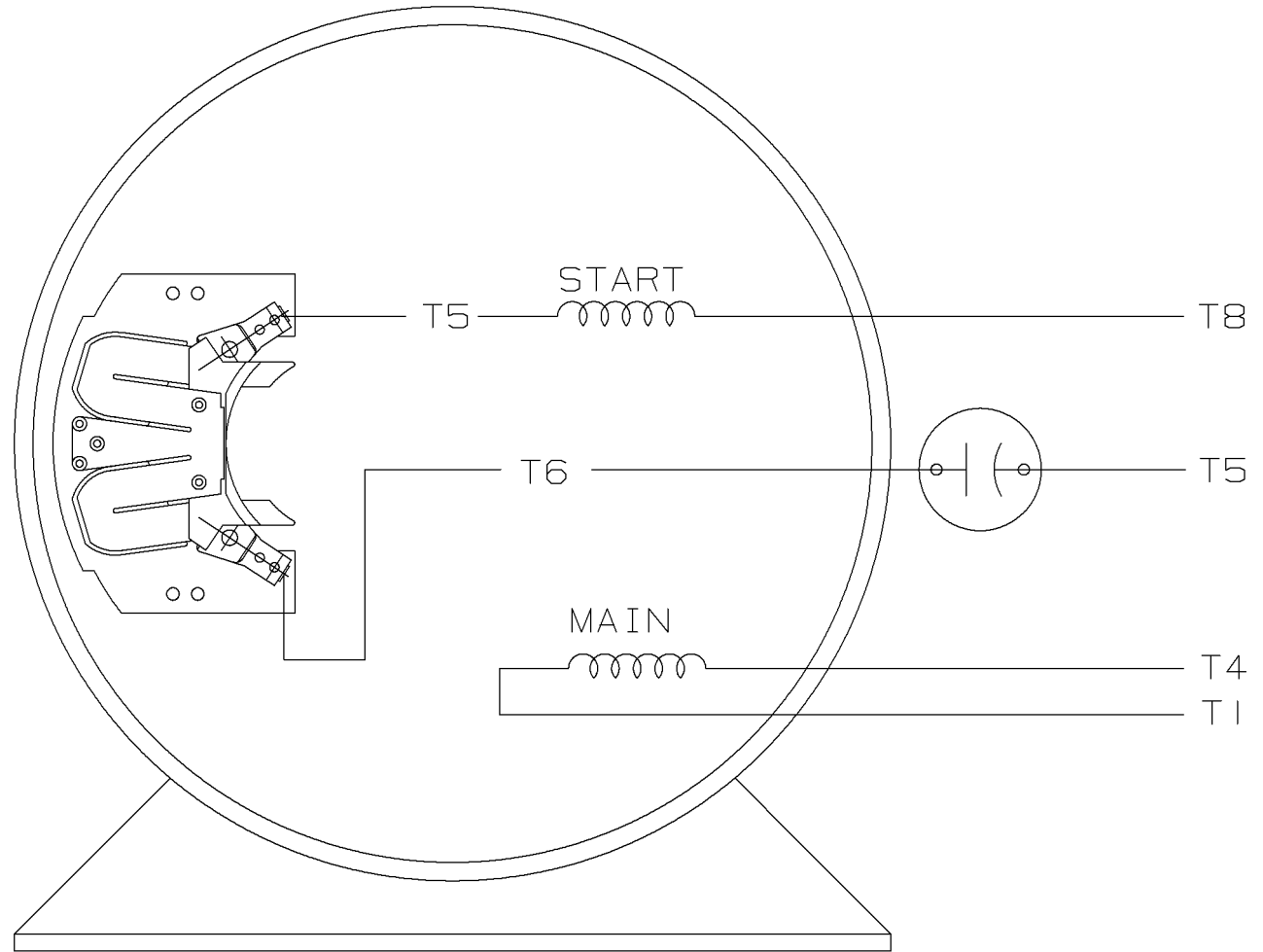
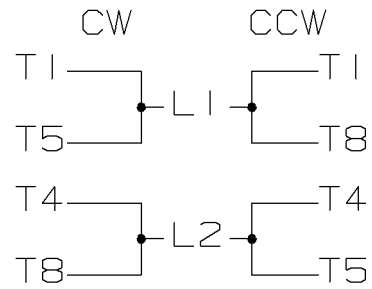
|  |                   |                               |
|--|-------------------|-------------------------------|
| DRAWING REVISION<br>F  | REVISION BY<br>KR | REV DATE/© DATE<br>03/30/2022 |
| REQUEST NUMBER<br>CR-0008033   | APPROVED BY<br>MN | DATE<br>03/30/2022            |
| REQUEST NUMBER DESCRIPTION<br>REDRAWN IN SOLIDWORKS  |                   |                               |
| COPYRIGHT (PER REVISION DATE) REGAL BELOIT AMERICA, INC. ALL RIGHTS RESERVED. PROPRIETARY AND CONFIDENTIAL INFORMATION - THIS DOCUMENT IS THE PROPERTY OF REGAL BELOIT AMERICA, INC. ("OWNER") AND CONTAINS OWNER'S PROPRIETARY INFORMATION. ANY PERSON, CORPORATION OR OTHER FIRM RECEIVING IT IS DEEMED, BY RECEIVING IT, TO AGREE THAT IT, AND/OR ANY PART OF IT, SHALL NOT BE DISCLOSED TO ANY PERSON, CORPORATION OR OTHER ENTITY, DUPLICATED, AND/OR USED, EXCEPT AS EXPRESSLY APPROVED IN WRITING IN ADVANCE BY OWNER. THIS DOCUMENT SHALL BE RETURNED TO OWNER UPON REQUEST. IT MAY BE SUBJECT TO CERTAIN RESTRICTIONS UNDER APPLICABLE EXPORT CONTROL LAWS AND REGULATIONS. |                   |                               |

|   |         |          |         |
|---|---------|----------|---------|
| TOLERANCES (EXCEPT AS NOTED):                               |         |          |         |
| DEC.  | INCH    | mm       | ANGLE   |
| .X  | ±0.1    | [±3]     | ±7' 30" |
| .XX   | ±0.03   | [±0.8]   |         |
| .XXX  | ±0.005  | [±0.13]  |         |
| .XXXX   | ±0.0005 | [±0.013] |         |
| REMOVE BURRS & BREAK SHARP EDGES: .003/.015 [.08/.38] X 45° |         |          |         |
| CORNER FILLETS: R.02 [.5]                                   |         |          |         |
| MACHINED SURFACES: 200/ 5.1                                 |         |          |         |
| INCH mm   |         |          |         |
| mm DIMENSIONS IN [BRACKETS] ARE FOR REFERENCE ONLY          |         |          |         |

|                        |
|------------------------|
| DRAWN BY<br>GRB        |
| DATE<br>14/11/08       |
| APPROVED BY<br>SK      |
| DATE<br>14/11/08       |
| REFERENCE<br>SS86684   |
| THIRD ANGLE PROJECTION |

|             |                          |                            |  |
|-------------|--------------------------|----------------------------|--|
|             |                          | Regal Beloit America, Inc. |  |
| DESCRIPTION |                          | OUTLINE                    |  |
|             |                          | 210 JP FR. DP - 'C' FACE   |  |
| MATERIAL    |                          | PROCESS/FINISH             |  |
| SIZE<br>A   | DRAWING NUMBER<br>037644 | SHEET<br>1 OF 1            |  |

SINGLE VOLTAGE CAPACITOR START MOTOR, ELECTRICALLY REVERSIBLE



VIEW OF TERMINAL END

|     |            |             |          |  |   |                                   |            |
|-----|------------|-------------|----------|--|---|-----------------------------------|------------|
|     |            |             |          | <input checked="" type="checkbox"/> MAX. SURFACE ROUGHNESS UNLESS NOTED OTHERWISE<br>MATL SPEC<br>FINISH<br>REFERENCE DRW. | UNLESS OTHERWISE SPECIFIED DIMENSIONS ARE IN INCHES<br>TOL. ON XX±.02 XXX±.005 XXXX±.0005 ANGLES± 7'30" | DRAWN BY GK<br>CHKD BY<br>APPD BY | 01-10-1987 |
| 1   | 01-10-1987 | NEW DRAWING | CN-7664C | GK   | MARATHON ELECTRIC<br>WAUSAU, WISCONSIN 54401  |                                   |            |
| REV | DATE       | CHANGE      |          | NAME   | PART NAME CONNECTION DIAGRAM  | DRWG NO<br>A- EE7090JR            |            |

SHOP BOOK

PURCHASED

DISTRIBUTION - WA - LB - WP - LM - BR

CADD FILE NO.

EE7090JR

ERROR: syntaxerror  
OFFENDING COMMAND: --nostringval--

STACK:

214  
/Otilde  
213  
/Ocircumflex  
212  
/Oacute  
211  
/Ograve  
210  
/Ntilde  
209  
/Eth  
208  
/Idieresis  
207  
/Icircumflex  
206  
/Iacute  
205  
/Igrave  
204  
/Edieresis  
203  
/Ecircumflex  
202  
/Eacute  
201  
/Egrave  
200  
/Ccedilla  
199  
/AE  
198  
/Aring  
197  
/Adieresis  
196  
/Atilde  
195  
/Acircumflex  
194  
/Aacute  
193  
/Agrave  
192  
/questiondown  
191  
/threequarters  
190  
/onehalf  
189  
/onequarter  
188  
/guillemotright  
187  
/ordmasculine  
186  
/onesuperior  
185  
/cedilla  
184  
/periodcentered  
183  
/paragraph  
182  
/mu  
181  
/acute

CERTIFICATION DATA SHEET

Model#: 215TCDW7004 AB WINDING#: CK10250 NONE 2  
 CONN. DIAGRAM: A-EE7090JL ASSEMBLY: F1 ONLY  
 OUTLINE: 037644-1115

TYPICAL MOTOR PERFORMANCE DATA

| HP | KW   | SYNC. RPM | F.L. RPM | FRAME | ENCLOSURE | KVA CODE | DESIGN |
|----|------|-----------|----------|-------|-----------|----------|--------|
| 10 | 7.50 | 3600      | 3465     | 215JP | DP        | G        | L      |

| PH | Hz | VOLTS | FL AMPS | START TYPE      | DUTY       | INSL | S.F  | AMB°C | ELEVATION |
|----|----|-------|---------|-----------------|------------|------|------|-------|-----------|
| 1  | 60 | 230   | 47      | ACROSS THE LINE | CONTINUOUS | F4   | 1.15 | 40    | 3300      |

| FULL LOAD EFF: 81.5 | 3/4 LOAD EFF: 80  | 1/2 LOAD EFF: 79 | GTD. EFF | ELEC. TYPE        | NO LOAD AMPS |
|---------------------|-------------------|------------------|----------|-------------------|--------------|
| FULL LOAD PF: 84    | 3/4 LOAD PF: 79.5 | 1/2 LOAD PF: 69  | 0        | CAP START IND RUN | 21           |

| F.L. TORQUE | LOCKED ROTOR AMPS | L.R. TORQUE    | B.D. TORQUE    | F.L. RISE°C |
|-------------|-------------------|----------------|----------------|-------------|
| 15.1 LB-FT  | 249               | 23.1 LB-FT 153 | 34.3 LB-FT 227 | 55          |

| SOUND PRESSURE @ 3 FT. | SOUND POWER | ROTOR WK^2 | MAX. WK^2 | SAFE STALL TIME | STARTS /HOUR | APPROX. MOTOR WGT |
|------------------------|-------------|------------|-----------|-----------------|--------------|-------------------|
| - dBA                  | - dBA       | 0 LB-FT^2  | - LB-FT^2 | 10 SEC.         | -            | 0 LBS.            |

\*\*\* SUPPLEMENTAL INFORMATION \*\*\*

| DE BRACKET TYPE | ODE BRACKET TYPE | MOUNT TYPE | ORIENTATION | SEVERE DUTY | HAZARDOUS LOCATION | DRIP COVER | SCREENS | PAINT         |
|-----------------|------------------|------------|-------------|-------------|--------------------|------------|---------|---------------|
| C-FACE          | STANDARD         | RIGID      | HORIZONTAL  | FALSE       | NONE               | FALSE      | NONE    | BLUE (ENAMEL) |

| BEARINGS |      | GREASE     | SHAFT TYPE | SPECIAL DE | SPECIAL ODE | SHAFT MATERIAL    | FRAME MATERIAL |
|----------|------|------------|------------|------------|-------------|-------------------|----------------|
| DE       | OPE  |            |            |            |             |                   |                |
| BALL     | BALL | POLYREX EM | JP         | NONE       | NONE        | AISI 1045 (C-240) | ROLLED STEEL   |
| 6309     | 6206 |            |            |            |             |                   |                |

| THERMO-PROTECTORS |            |          |          | THERMISTORS | CONTROL | SPACE /n HEATERS |
|-------------------|------------|----------|----------|-------------|---------|------------------|
| THERMOSTATS       | PROTECTORS | WDG RTDs | BRG RTDs |             |         |                  |
| NONE              | NOT        | NONE     | NONE     | NONE        | FALSE   | NONE VOLTS       |

If Inverter equals NONE, contact factory for further information

\*  
N  
O  
T  
E  
S  
\*

|                           |
|---------------------------|
| INVERTER TORQUE: NONE     |
| INV. HP SPEED RANGE: NONE |
| ENCODER: NONE             |
| NONE NONE                 |
| NONE NONE PPR             |
| BRAKE: NONE NONE          |
| NONE P/N NONE             |
| NONE NONE                 |
| NONE FT-LB NONE V NONE Hz |

DATE: 06/21/2017 10:29:46 AM

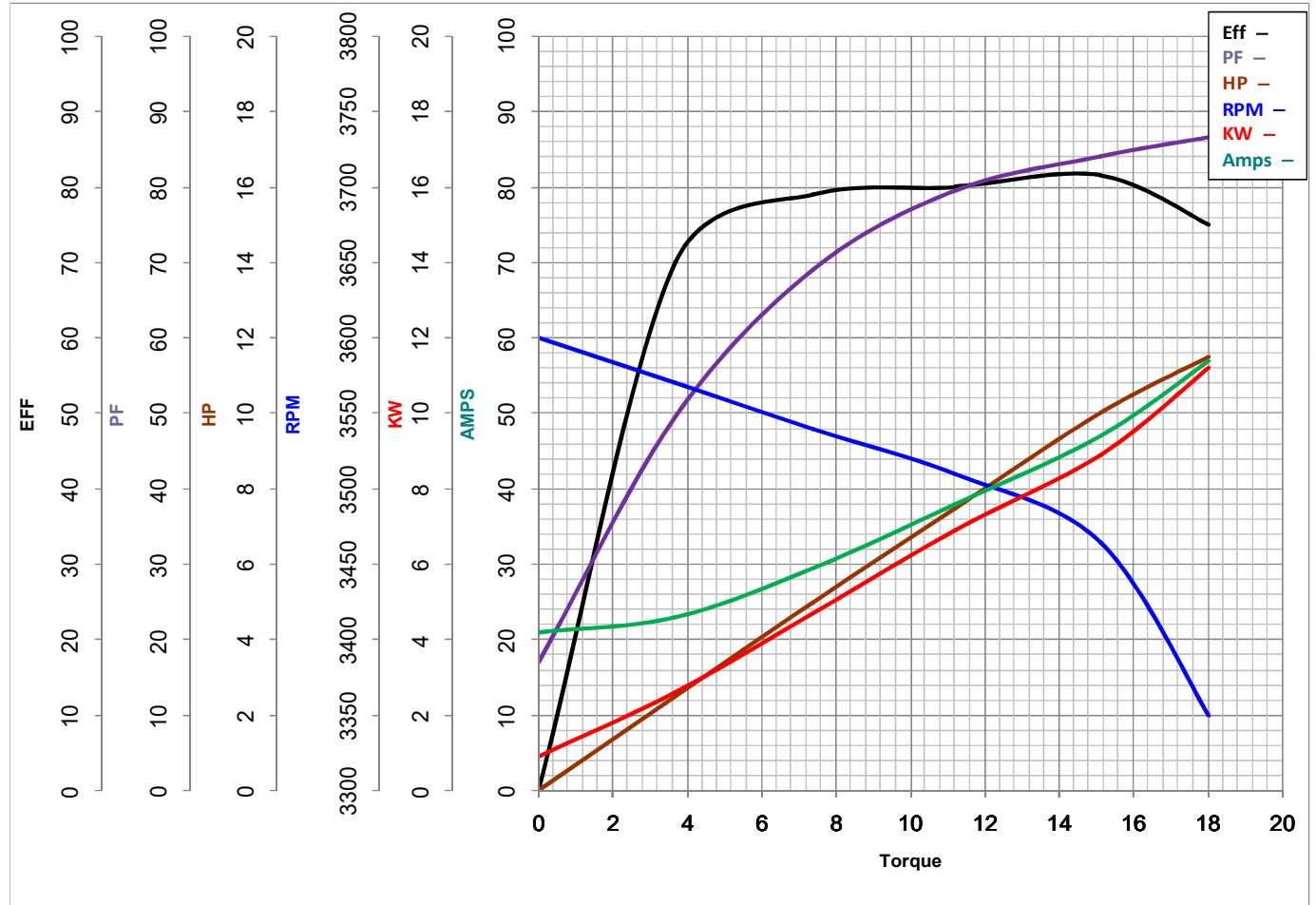
FORM 3531 REV.3 02/07/99

\*\* Subject to change without notice.



**MARATHON ELECTRIC CORPORATION**  
TYPICAL PERFORMANCE CURVE for AC MOTOR

Customer \_\_\_\_\_ Curve at 230 Volts HP 10.00 PHASE 1  
 Model No 215TCDW7004 60 HZ  
10 HP VOLTS 230  
 Catalog No Z431 HZ 60 RPM 3465



|           |             |       |           |             |       |
|-----------|-------------|-------|-----------|-------------|-------|
| FL TORQUE | <u>15.1</u> | Lb.Ft | FL AMPS   | <u>47</u>   |       |
| BD TORQUE | <u>34.3</u> | Lb.Ft | PU TORQUE | <u>23.0</u> | Lb.Ft |
| LR TORQUE | <u>23.1</u> | Lb.Ft | LR AMPS   | <u>249</u>  |       |
| WINDING   | CK10250-2   |       | Date      | 1/17/2019   |       |

## EC Declaration of Conformity

The undersigned representing  
the manufacturer:

Regal Beloit America  
100 East Randolph St.  
Wausau, WI 54401

and the authorized representative  
established within the Community:

Marathon Electric UK  
6F Thistleton Road Ind. Estate  
Market Overton  
Oakham, Rutland LE15 7PP UK

are committed to providing customers with products that comply with applicable regulations and international protocols to which they are subject, including the requirements of the European Parliament Directive on the Harmonization of the laws relating to electrical equipment designed for use within certain voltage limits (2014/35/EU).

Regal Beloit America declares that the following product(s), to which this declaration relates, are in conformity with the relevant sections of the EC standards listed below.

This statement supersedes any statements previously issued pertaining to the product(s) listed below and is subject to change without notice.

Model No : 215TCDW7004

(Model No. may contain prefix and/or suffix characters)

Catalog No : Z431

Rework No : N/A

Directives :

Low Voltage Directive 2014/35/EU

Harmonized Standards Used :

EN 60034-1: 2010 (IEC 60034-1: 2010)

EN 60034-5: 2001/A1:2007 (IEC 60034-5: 2000/A1:2006)

Authorized Representative:



Michael A. Logsdon  
Vice President, Technology

Authorized Representative in the Community:



Julian Clark  
Marketing Engineer

Created on 09/01/2022

**CE 22**