

PRODUCT INFORMATION PACKET

marathon®
Motors

Model No: 215TBFW7028

Catalog No: Z115

Chore ® General Purpose Farm Duty Motor, 7.50 HP, 1 Ph, 60 Hz, 230 V, 1800 RPM, 215TZ Frame, TEFC



Regal and Marathon are trademarks of Regal Rexnord Corporation or one of its affiliated companies.
©2022 Regal Rexnord Corporation, All Rights Reserved. MC017097E

RegalRexnord



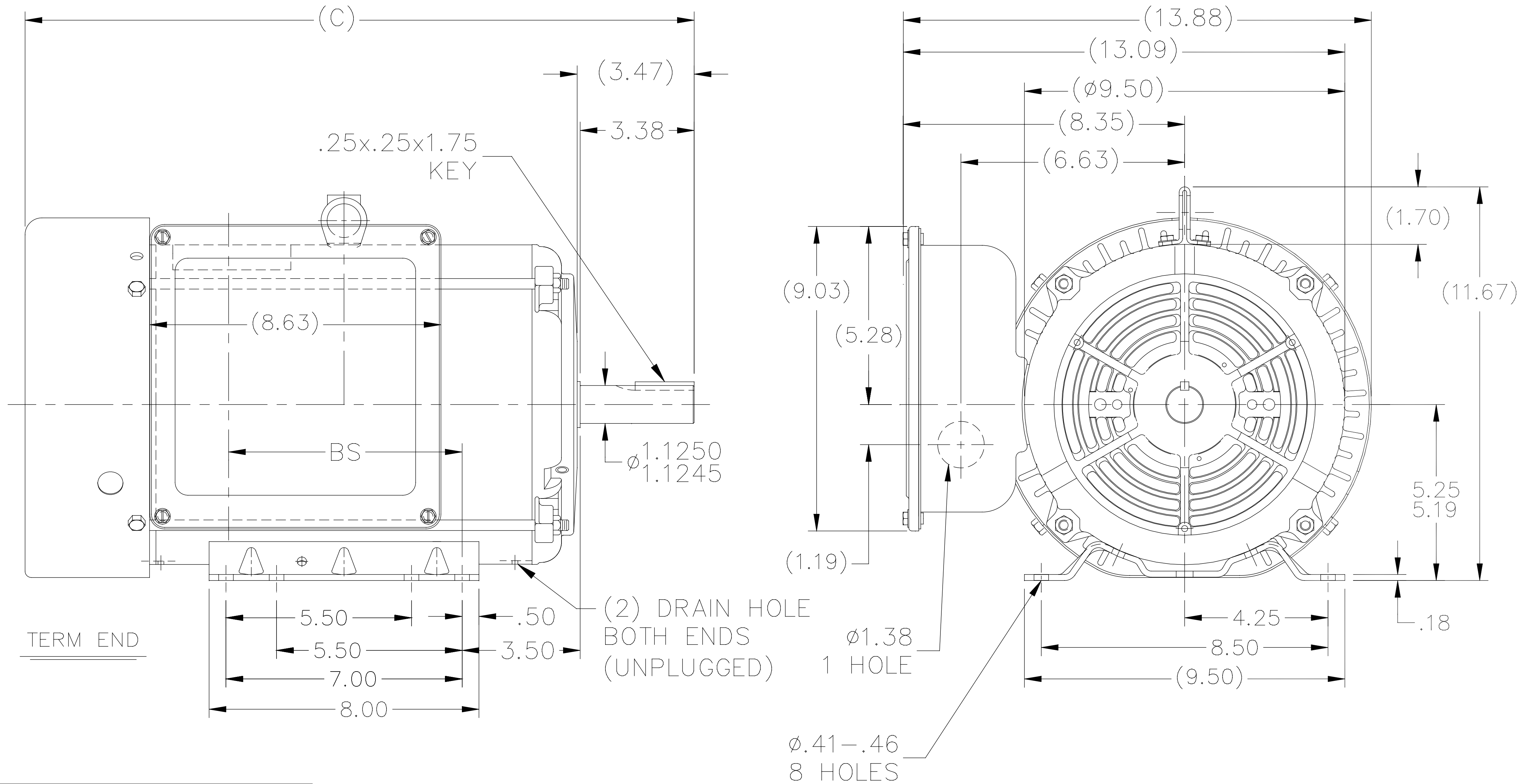
Nameplate Specifications

Output HP	7.50 Hp	Output KW	5.6 kW
Frequency	60 Hz	Voltage	230 V
Current	30.5 A	Speed	1750 rpm
Service Factor	1.15	Phase	1
Efficiency	85.5 %	Power Factor	95
Duty	Continuous	Insulation Class	F
Design Code	L	KVA Code	K
Frame	215TZ	Enclosure	Totally Enclosed Fan Cooled
Thermal Protection	Manual	Ambient Temperature	40 °C
Drive End Bearing Size	6307	Opp Drive End Bearing Size	6206
UL	Recognized (Not Protector)	CSA	Y
CE	Y	IP Code	43
Number of Speeds	1		

Technical Specifications

Electrical Type	Capacitor Start Capacitor Run	Starting Method	Across The Line
Poles	4	Rotation	Selective Counterclockwise
Resistance Main	.215 Ohms	Mounting	Rigid Base
Motor Orientation	Horizontal	Drive End Bearing	Ball
Opp Drive End Bearing	Ball	Frame Material	Rolled Steel
Shaft Type	Single Special Extension	Overall Length	21.09 in
Frame Length	12.40 in	Shaft Diameter	1.125 in
Shaft Extension	3.5 in	Assembly/Box Mounting	F1 ONLY
Connection Drawing	A-EE9048RC	Outline Drawing	A-SS86671-1240


SS86671



DASH	FRAME	C	BS
965	213T	18.34	5.42
1115	213/15T	19.84	6.92
1240	215T	21.09	8.17

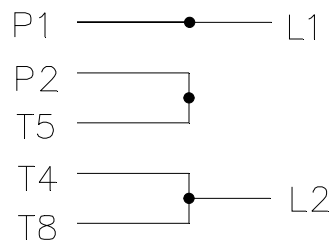
NOTES:

1. NAMEPLATE TO BE READ FROM C'BOX SIDE OF MOTOR.
2. DASH 965 TO BE READ FROM OPPOSITE SHAFT END.

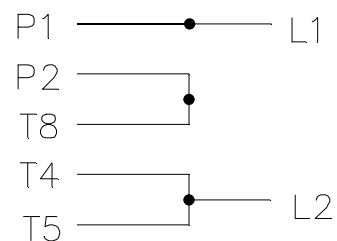
				TOLERANCES UNLESS SPECIFIED		 Regal Beloit America, Inc.	DRAWN MH 04-17-1997		
				DEC.	INCHES		CHK ML 04-18-1997	APPD DN 04-18-1997	SCALE 7=32
				.X	±.1	TITLE OUTLINE - STEEL C' BOX 210 FR. - BB - TS - TEFC 1 ϕ	REF		
8	DRAIN HOLES ADDED		KIR 02/08/16	SS .XXX	±.005		FMF		
7	REVISED 'B' DIMENSION	08-0118	RJW 01-22-2008	ML .XXXX	±.0005		PREV		
NO.	REVISION		BY & DATE	CHK ANG	±7'30"				
THIS DRAWING IN DESIGN AND DETAIL IS OUR PROPERTY AND MUST NOT BE USED EXCEPT IN CONNECTION WITH OUR WORK ALL RIGHTS OF DESIGN AND INVENTION ARE RESERVED THIS IS AN ELECTRONICALLY GENERATED DOCUMENT - DO NOT SCALE THIS PRINT				RFP	CAD FILE ss86671		SIZE A	DRAWING NO. SS86671	PAGE OF 8
				DIST LB					REV. 8

CONNECT:
START CAPACITORS IN PARALLEL

C.W. ROTATION

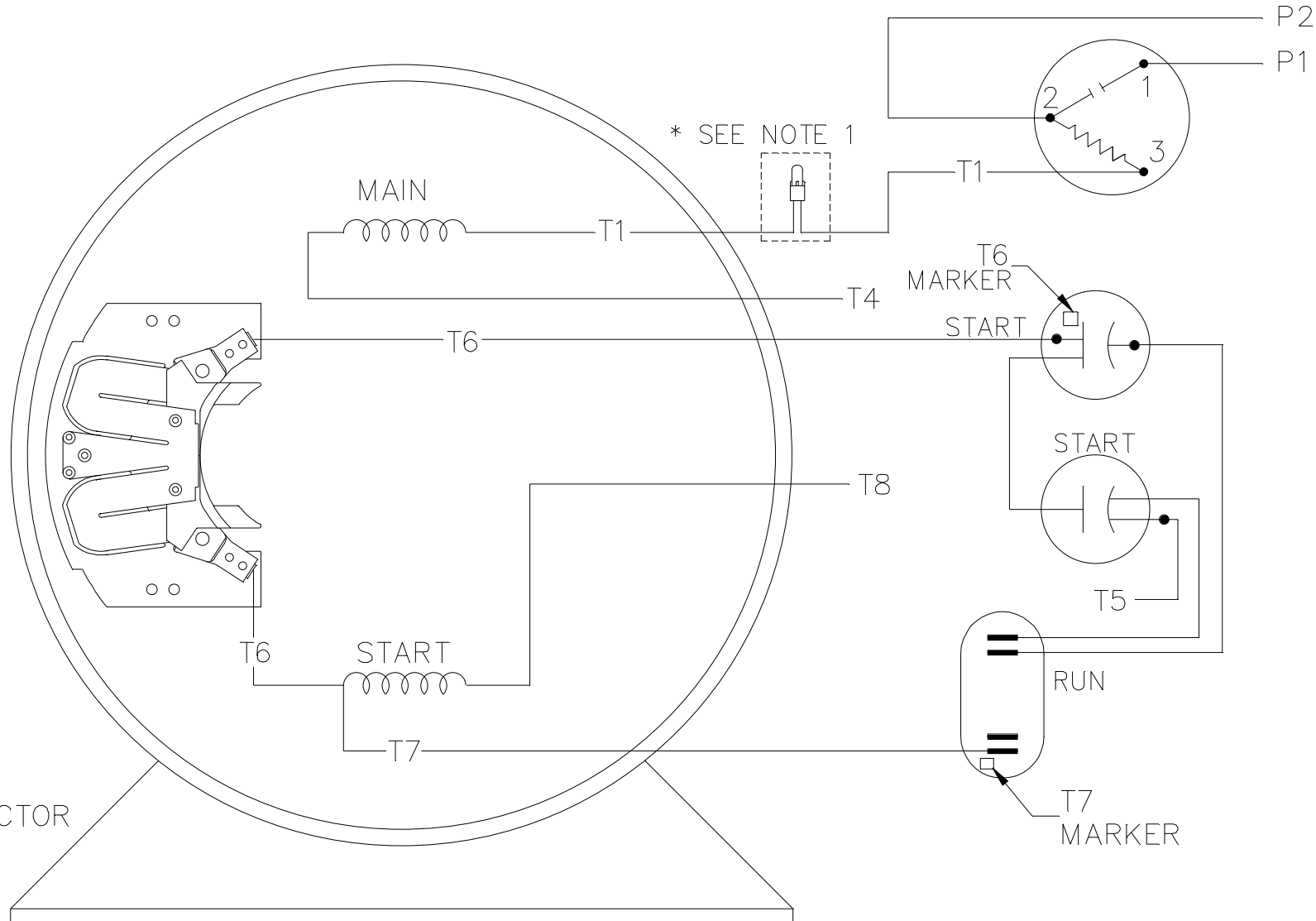


C.C.W. ROTATION



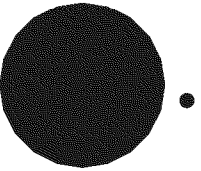
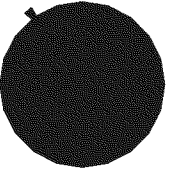
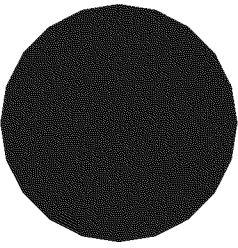
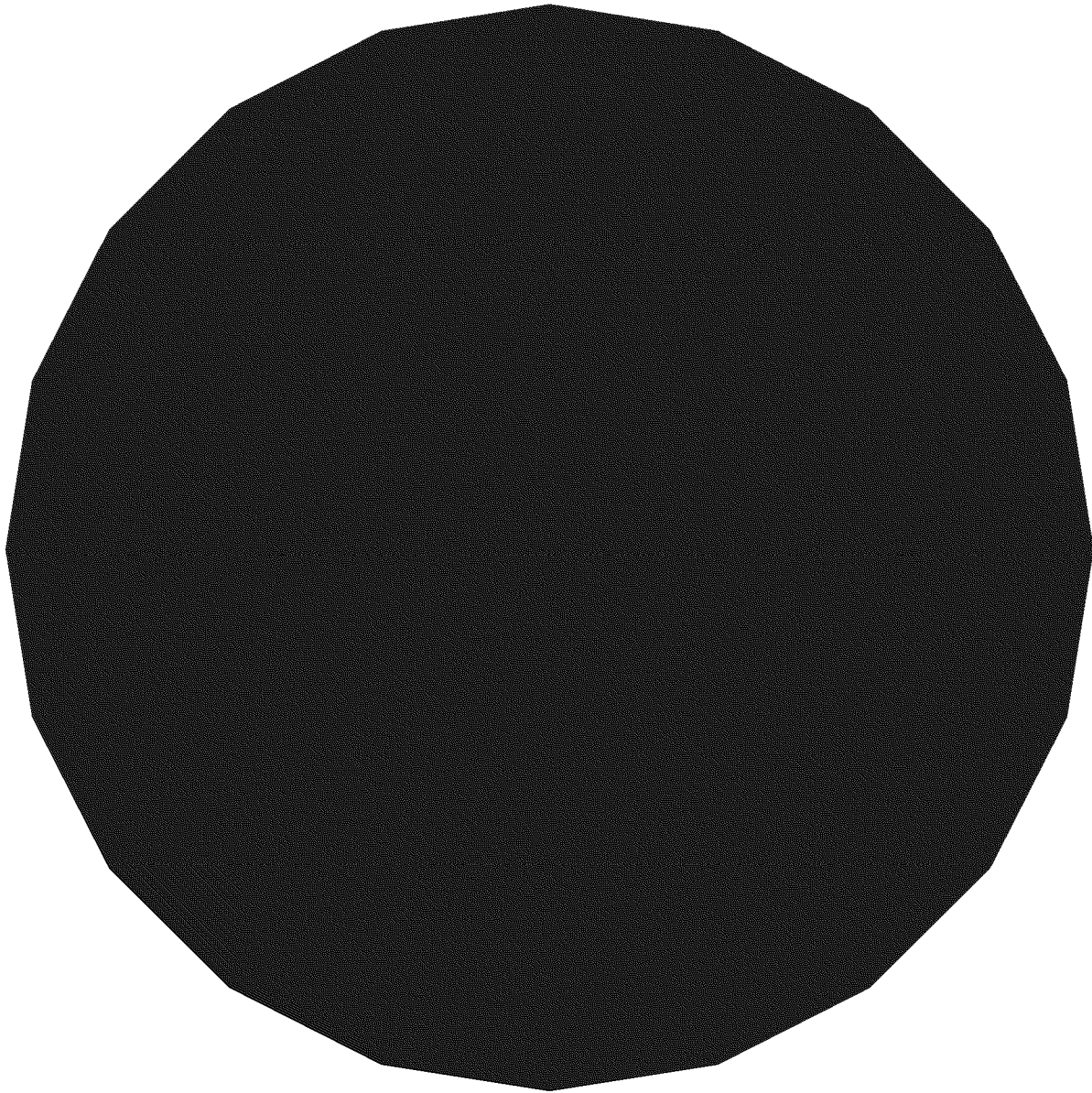
SINGLE VOLTAGE
CAPACITOR START
CAPACITOR RUN
REVERSIBLE

NOTE:
1. USE PRESSURE CONNECTOR
ONLY IN MT2 PLANT



VIEW OF TERMINAL END

NO.	REVISION	BY & DATE	CHK	TOLERANCES UNLESS SPECIFIED		MARATHON ELECTRIC	DRAWN MK 08-13-2007					
				DEC.	INCHES		CHK	MB 08-15-2007	APPD	MB 08-15-2007		
3	ADDED PRESSURE CONNECTOR IN MT2 MODEL	NB 10/5/2011	AK	.XX	±.02	TITLE CONNECTION DIAGRAM	SCALE	1=1				
2	CORRECT THE CONNECTIONS PER 08-1578	RWR 04-29-2008	ML	.XXX	±.005		REF	213M1029CD				
1	MOVED T5 LEAD 08-1578	RJW 04-15-2008	ML	.XXXX	±.0005		MAT'L.	213M1029				
				ANG	±7'30"	FINISH	PREV					
THIS DRAWING IN DESIGN AND DETAIL IS OUR PROPERTY AND MUST NOT BE USED EXCEPT IN CONNECTION WITH OUR WORK ALL RIGHTS OF DESIGN AND INVENTION ARE RESERVED THIS IS AN ELECTRONICALLY GENERATED DOCUMENT - DO NOT SCALE THIS PRINT				RFP	08-15-2007	CAD FILE	EE9048RC	SIZE	DRAWING NO.	PAGE	OF	REV.
				DIST				A	EE9048RC			3



CERTIFICATION DATA SHEET

Model#: 215TBFW7028 DD WINDING#: BK104122 NONE 1
 CONN. DIAGRAM: A-EE9048RC ASSEMBLY: F1 ONLY
 OUTLINE: A-SS86671-1240

TYPICAL MOTOR PERFORMANCE DATA

HP	KW	SYNC. RPM	F.L. RPM	FRAME	ENCLOSURE	KVA CODE	DESIGN
7 1/2	5.6	1800	1750	215TZ	TEFC	K	L

PH	Hz	VOLTS	FL AMPS	START TYPE	DUTY	INSL	S.F	AMB°C	ELEVATION
1	60	230	30.5	ACROSS THE LINE	CONTINUOUS	F4	1.15	40	3300

FULL LOAD EFF: 85.5	3/4 LOAD EFF: 84.5	1/2 LOAD EFF: 81	GTD. EFF	ELEC. TYPE	NO LOAD AMPS
FULL LOAD PF: 95	3/4 LOAD PF: 94	1/2 LOAD PF: 91	0	CAP START CAP RUN	7

F.L. TORQUE	LOCKED ROTOR AMPS	L.R. TORQUE	B.D. TORQUE	F.L. RISE°C
22.5 LB-FT	266	86.5 LB-FT 384	58.5 LB-FT 260	70

SOUND PRESSURE @ 3 FT.	SOUND POWER	ROTOR WK^2	MAX. WK^2	SAFE STALL TIME	STARTS / HOUR	APPROX. MOTOR WGT
72 dBA	82 dBA	0 LB-FT^2	- LB-FT^2	10 SEC.	-	0 LBS.

*** SUPPLEMENTAL INFORMATION ***

DE BRACKET TYPE	ODE BRACKET TYPE	MOUNT TYPE	ORIENTATION	SEVERE DUTY	HAZARDOUS LOCATION	DRIP COVER	SCREENS	PAINT
STANDARD	STANDARD	RIGID	HORIZONTAL	FALSE	NONE	FALSE	NONE	BLACK (ENAMEL)

BEARINGS		GREASE	SHAFT TYPE	SPECIAL DE	SPECIAL ODE	SHAFT MATERIAL	FRAME MATERIAL
DE	OPE						
BALL	BALL	POLYREX EM	SGL SPL EXT	1.125 x 3.38 IN SEK	NONE	AISI 1045 (C-240)	ROLLED STEEL
6307	6206						

THERMO-PROTECTORS				THERMISTORS	CONTROL	SPACE /n HEATERS
THERMOSTATS	PROTECTORS	WDG RTDs	BRG RTDs			
NONE	MANUAL	NONE	NONE	NONE	FALSE	NONE VOLTS

If Inverter equals NONE, contact factory for further information

*
N
O
T
E
S
*

INVERTER TORQUE: NONE
INV. HP SPEED RANGE: NONE
ENCODER: NONE
NONE NONE
NONE NONE PPR
BRAKE: NONE NONE
NONE P/N NONE
NONE NONE
- FT-LB NONE V NONE Hz

DATE: 06/22/2017 07:01:04 AM
 FORM 3531 REV.3 02/07/99

** Subject to change without notice.



MARATHON ELECTRIC CORPORATION
TYPICAL PERFORMANCE CURVE for AC MOTOR

Customer

Curve at

230

Volts

HP 7.50

PHASE 1

Model No 215TBFW7028

60

HZ

VOLTS 230

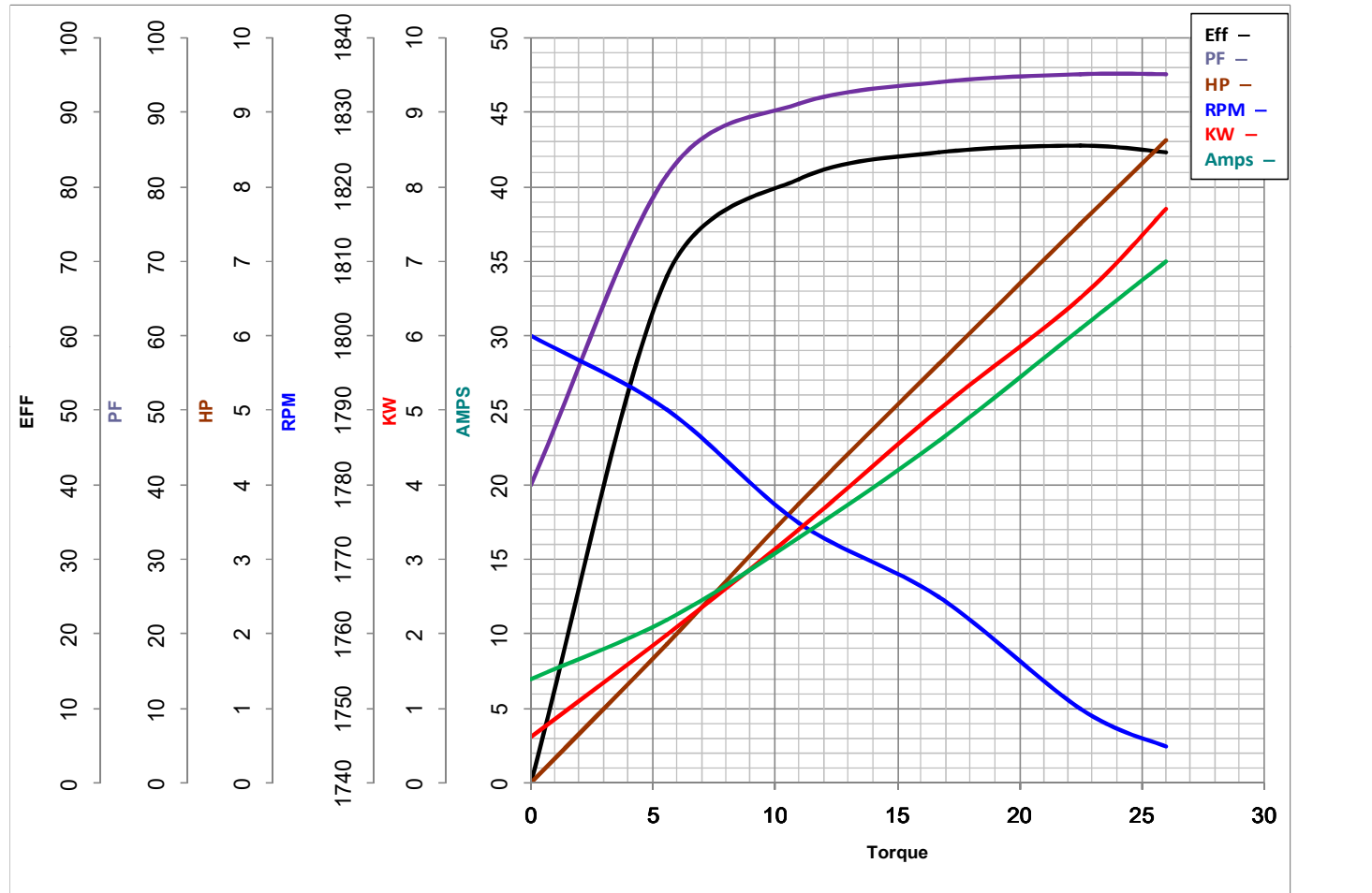
7.5

HP

HZ 60

RPM 1750

Catalog No Z115



Torque in Lb.Ft

FL TORQUE 22.5 Lb.Ft
BD TORQUE 58.5 Lb.Ft
LR TORQUE 86.5 Lb.Ft

FL AMPS 30.5
PU TORQUE 51.0 Lb.Ft
LR AMPS 266

WINDING BK104122-1

Date 1/17/2019

EC Declaration of Conformity

The undersigned representing
the manufacturer:

Regal Beloit America
100 East Randolph St.
Wausau, WI 54401

and the authorized representative
established within the Community:

Marathon Electric UK
6F Thistleton Road Ind. Estate
Market Overton
Oakham, Rutland LE15 7PP UK

are committed to providing customers with products that comply with applicable regulations and international protocols to which they are subject, including the requirements of the European Parliament Directive on the Harmonization of the laws relating to electrical equipment designed for use within certain voltage limits (2014/35/EU).

Regal Beloit America declares that the following product(s), to which this declaration relates, are in conformity with the relevant sections of the EC standards listed below.

This statement supersedes any statements previously issued pertaining to the product(s) listed below and is subject to change without notice.

Model No : 215TBFW7028

(Model No. may contain prefix and/or suffix characters)

Catalog No : Z115

Rework No : N/A

Directives :

Low Voltage Directive 2014/35/EU

Harmonized Standards Used :

EN 60034-1: 2010 (IEC 60034-1: 2010)

EN 60034-5: 2001/A1:2007 (IEC 60034-5: 2000/A1:2006)

Authorized Representative:



Michael A. Logsdon
Vice President, Technology

Authorized Representative in the Community:



Julian Clark
Marketing Engineer

Created on 09/01/2022

CE 22