

# PRODUCT INFORMATION PACKET

marathon®  
Motors

Model No: 215TBDW7027

Catalog No: Z413

Close-Coupled Pump Motor, 10 HP, 1 Ph, 60 Hz, 230 V, 1800 RPM, 215JM Frame, DP



Regal and Marathon are trademarks of Regal Rexnord Corporation or one of its affiliated companies.  
©2022 Regal Rexnord Corporation, All Rights Reserved. MC017097E

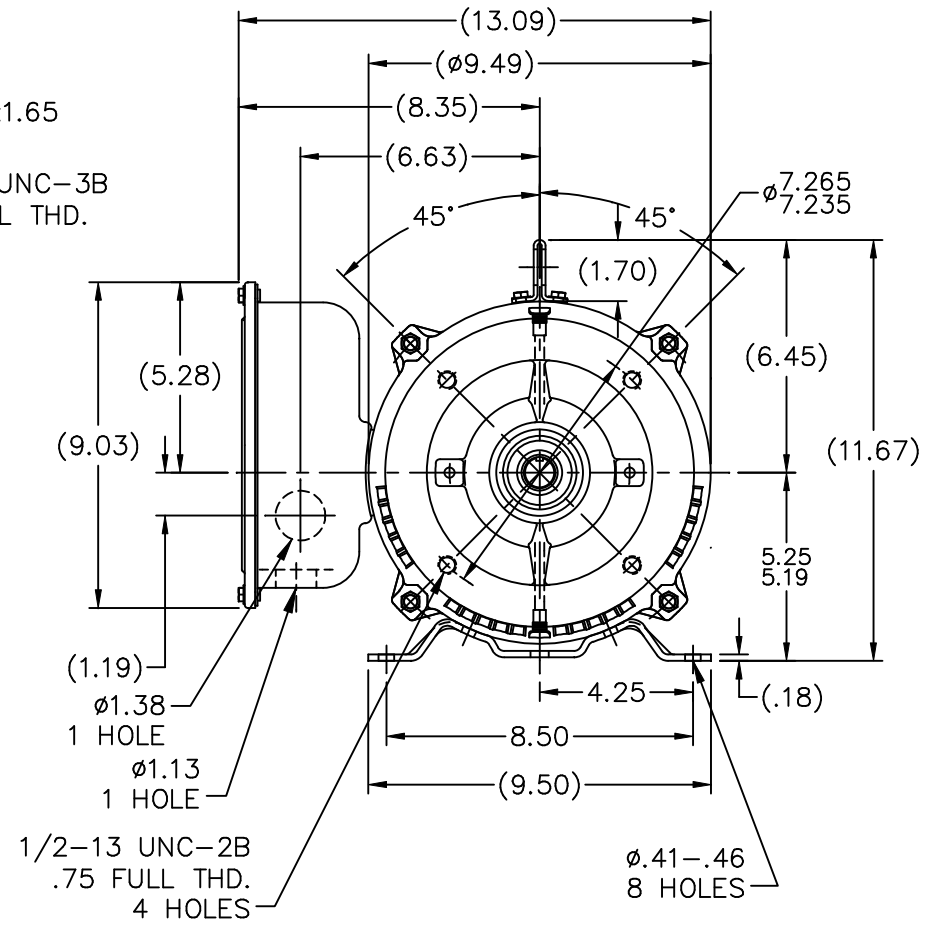
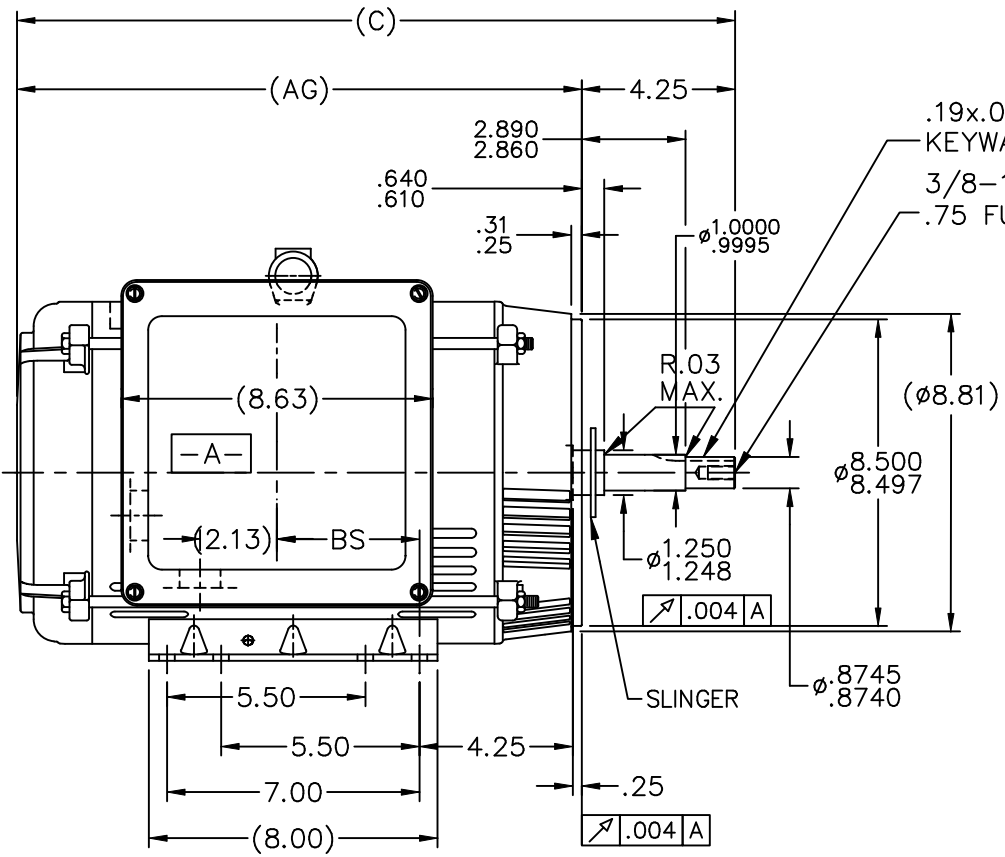
RegalRexnord

### Nameplate Specifications

Output HP	<b>10 Hp</b>	Output KW	<b>7.5 kW</b>
Frequency	<b>60 Hz</b>	Voltage	<b>230 V</b>
Current	<b>44.0 A</b>	Speed	<b>1730 rpm</b>
Service Factor	<b>1.15</b>	Phase	<b>1</b>
Efficiency	<b>82.5 %</b>	Power Factor	<b>89</b>
Duty	<b>Continuous</b>	Insulation Class	<b>F</b>
Design Code	<b>L</b>	KVA Code	<b>G</b>
Frame	<b>215JM</b>	Enclosure	<b>Drip Proof</b>
Thermal Protection	<b>No Protection</b>	Ambient Temperature	<b>40 °C</b>
Drive End Bearing Size	<b>6309</b>	Opp Drive End Bearing Size	<b>6206</b>
UL	<b>Recognized</b>	CSA	<b>Y</b>
CE	<b>Y</b>	IP Code	<b>22</b>
Number of Speeds	<b>1</b>		


### Technical Specifications

Electrical Type	<b>Capacitor Start Capacitor Run</b>	Starting Method	<b>Across The Line</b>
Poles	<b>4</b>	Rotation	<b>Selective Counterclockwise</b>
Resistance Main	<b>0 Ohms</b>	Mounting	<b>Rigid Base</b>
Motor Orientation	<b>Horizontal</b>	Drive End Bearing	<b>Ball</b>
Opp Drive End Bearing	<b>Ball</b>	Frame Material	<b>Rolled Steel</b>
Shaft Type	<b>JM</b>	Overall Length	<b>21.17 in</b>
Frame Length	<b>12.40 in</b>	Shaft Diameter	<b>0.875 in</b>
Shaft Extension	<b>4.25 in</b>	Assembly/Box Mounting	<b>F1 ONLY</b>
Outline Drawing	<b>A-SS89482-1240</b>	Connection Drawing	<b>A-EE9048MF</b>

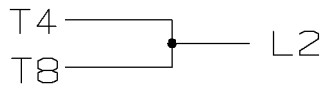
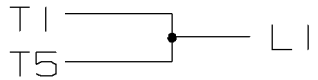


DASH	FR.	C	AG	BS
965	213JM	18.42	14.17	2.45
1115	213/15JM	19.92	15.67	3.95
1240	213/15JM	21.17	16.92	5.20

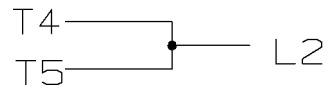
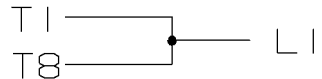
NOTES:  
1. NAMEPLATE TO BE READ FROM C'BOX SIDE OF MOTOR.

				TOLERANCES UNLESS SPECIFIED			DRAWN RWR 01-22-2008					
				DEC.	INCHES		CHK MSG 01-25-2008					
				.X	±.1		APPD EMH 01-25-2008					
				.XX	±.03		SCALE 1=5					
				.XXX	±.005		REF A-SS88686LE					
				.XXXX	±.0005	TITLE OUTLINE	FMF ISAAC#07-1847					
				.XXXX	±.0005	210 FR. - DR. PR. - 1 PHASE	PREV					
NO.	REVISION	BY & DATE	CHK	ANG	±7'30"	MAT'L.	FINISH	SIZE	DRAWING NO.	PAGE	OF	REV.
			RFP	01-25-2008		CAD FILE	SS89482	A	SS89482			
			DIST	LB								

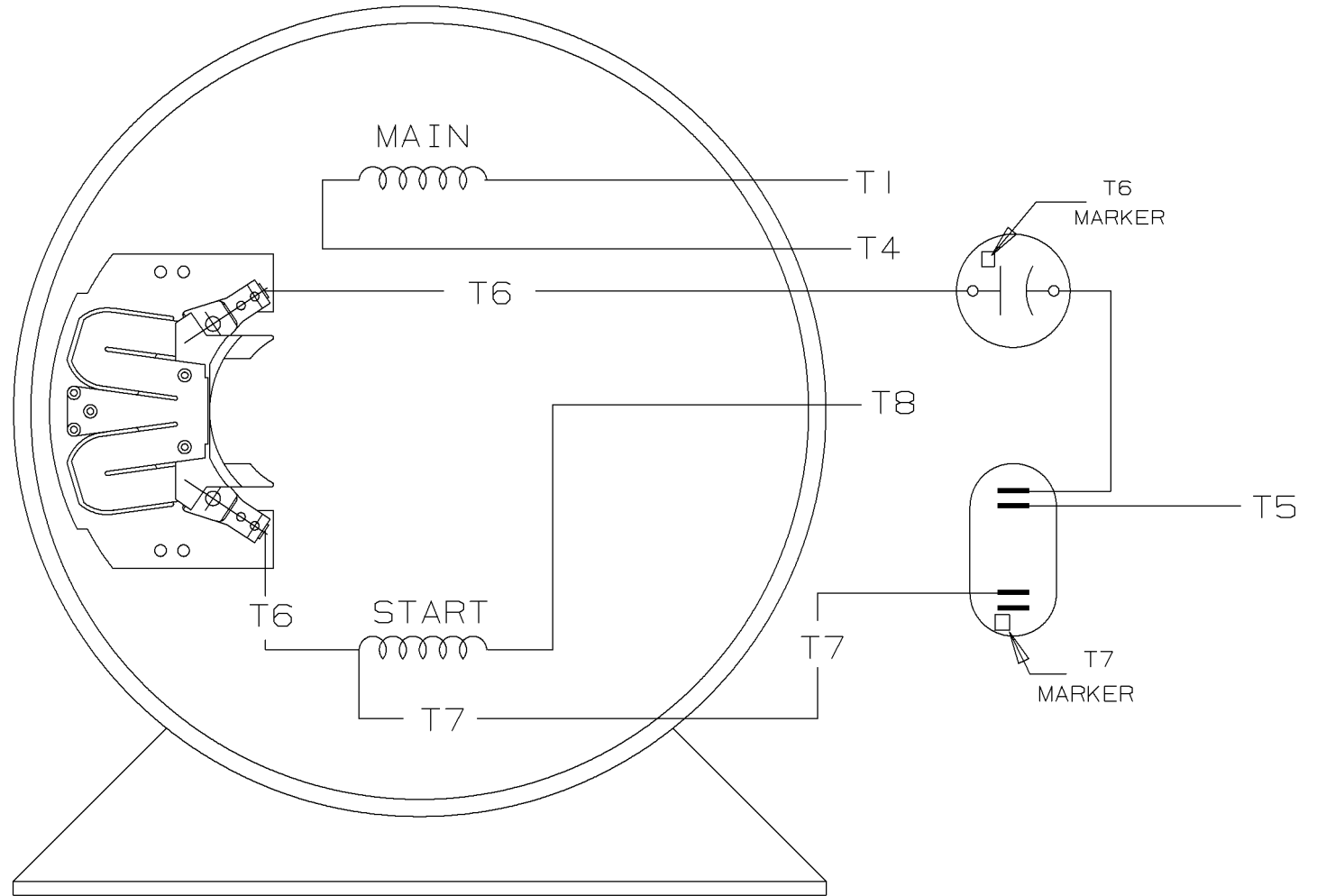
C.W. ROTATION



C.C.W. ROTATION



SINGLE VOLTAGE  
CAPACITOR START  
CAPACITOR RUN  
REVERSIBLE



VIEW OF TERMINAL END

				<input checked="" type="checkbox"/> MAX. SURFACE ROUGHNESS UNLESS NOTED OTHERWISE	UNLESS OTHERWISE SPECIFIED DIMENSIONS ARE IN INCHES				
				MATL SPEC	180 - 210 SWITCH	DRAWN BY	GK	11-01-1986	
				FINISH		CHKD BY	ML	11-01-1986	
I	11-04-1986	NEW DRAWING	CN 7664C	GK		REFERENCE DRW.	APPD BY	FG	11-04-1986
REV	DATE	CHANGE	NAME	PART NAME CONNECTION DIAGRAM				DRWG NO	A-EE9048MF

SHOP BOOK

PURCHASED

DISTRIBUTION - WA - LB - WP - LM - BR

CADD FILE NO.

EE9048MF

**CERTIFICATION DATA SHEET**

**Model#:** 215TBDW7027 BD  
**CONN. DIAGRAM:** A-EE9048MF  
**OUTLINE:** A-SS89482-1240

**WINDING#:** BK104121 NONE 2  
**ASSEMBLY:** F1 ONLY

**TYPICAL MOTOR PERFORMANCE DATA**

HP	KW	SYNC. RPM	F.L. RPM	FRAME	ENCLOSURE	KVA CODE	DESIGN
10	7.5	1800	1730	215JM	DP	G	L

PH	Hz	VOLTS	FL AMPS	START TYPE	DUTY	INSL	S.F	AMB°C	ELEVATION
1	60	230	44	ACROSS THE LINE	CONTINUOUS	F4	1.15	40	3300

FULL LOAD EFF: 82.5	3/4 LOAD EFF: 84.1	1/2 LOAD EFF: 83.2	GTD. EFF	ELEC. TYPE	NO LOAD AMPS
FULL LOAD PF: 89	3/4 LOAD PF: 86.7	1/2 LOAD PF: 80	0	CAP START CAP RUN	14

F.L. TORQUE	LOCKED ROTOR AMPS	L.R. TORQUE	B.D. TORQUE	F.L. RISE°C
30.1 LB-FT	260	47.4 LB-FT 157	67.5 LB-FT 224	65

SOUND PRESSURE @ 3 FT.	SOUND POWER	ROTOR WK^2	MAX. WK^2	SAFE STALL TIME	STARTS /HOUR	APPROX. MOTOR WGT
0 dBA	10 dBA	0 LB-FT^2	0 LB-FT^2	10 SEC.	3	0 LBS.

**\*\*\* SUPPLEMENTAL INFORMATION \*\*\***

DE BRACKET TYPE	ODE BRACKET TYPE	MOUNT TYPE	ORIENTATION	SEVERE DUTY	HAZARDOUS LOCATION	DRIP COVER	SCREENS	PAINT
C-FACE	STANDARD	RIGID	HORIZONTAL	FALSE	NONE	FALSE	NONE	BLUE (ENAMEL)

BEARINGS		GREASE	SHAFT TYPE	SPECIAL DE	SPECIAL ODE	SHAFT MATERIAL	FRAME MATERIAL
DE	OPE						
BALL	BALL	POLYREX EM	JM	NONE	NONE	AISI 1045 (C-240)	ROLLED STEEL
6309	6206						

THERMO-PROTECTORS				THERMISTORS	CONTROL	SPACE /n HEATERS
THERMOSTATS	PROTECTORS	WDG RTDs	BRG RTDs			
NONE	NOT	NONE	NONE	NONE	FALSE	NONE VOLTS

If Inverter equals NONE, contact factory for further information

\*  
N  
O  
T  
E  
S  
\*

INVERTER TORQUE: NONE
INV. HP SPEED RANGE: NONE
ENCODER: NONE
NONE NONE
NONE NONE PPR
BRAKE: NONE NONE
NONE P/N NONE
NONE NONE
- FT-LB NONE V NONE Hz

DATE: 06/21/2017 09:41:36 AM  
 FORM 3531 REV.3 02/07/99  
 \*\* Subject to change without notice.



**MARATHON ELECTRIC CORPORATION**  
TYPICAL PERFORMANCE CURVE for AC MOTOR

Customer

Curve at

230

Volts

HP 10.00

PHASE 1

Model No 215TBDW7027

60

HZ

VOLTS 230

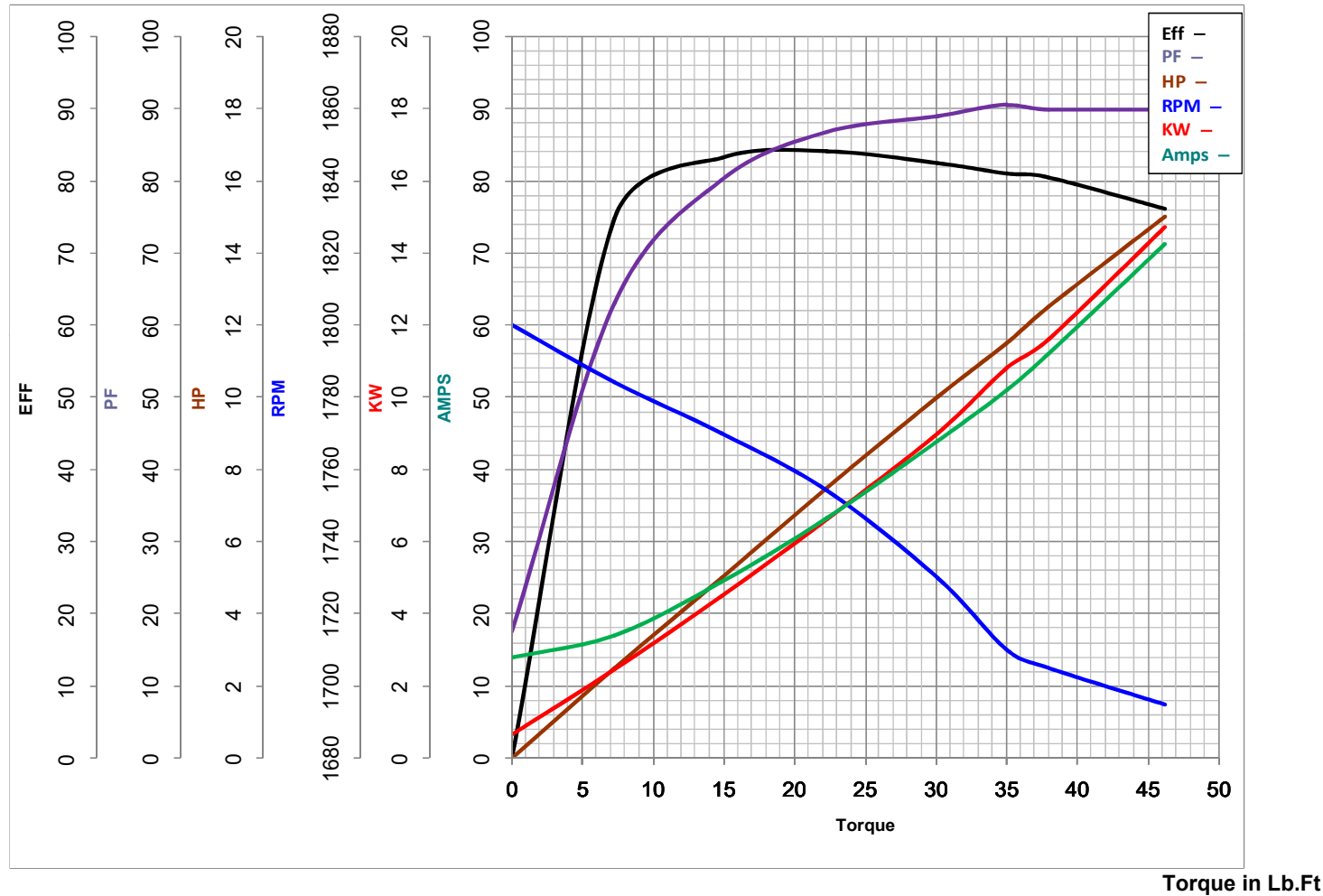
10

HP

HZ 60

RPM 1730

Catalog No Z413



Torque in Lb.Ft

FL TORQUE 30.1 Lb.Ft  
BD TORQUE 67.5 Lb.Ft  
LR TORQUE 47.4 Lb.Ft

FL AMPS 44  
PU TORQUE 47.0 Lb.Ft  
LR AMPS 260

WINDING BK104121-2

Date 1/17/2019

## EC Declaration of Conformity

The undersigned representing  
the manufacturer:

Regal Beloit America  
100 East Randolph St.  
Wausau, WI 54401

and the authorized representative  
established within the Community:

Marathon Electric UK  
6F Thistleton Road Ind. Estate  
Market Overton  
Oakham, Rutland LE15 7PP UK

are committed to providing customers with products that comply with applicable regulations and international protocols to which they are subject, including the requirements of the European Parliament Directive on the Harmonization of the laws relating to electrical equipment designed for use within certain voltage limits (2014/35/EU).

Regal Beloit America declares that the following product(s), to which this declaration relates, are in conformity with the relevant sections of the EC standards listed below.

This statement supersedes any statements previously issued pertaining to the product(s) listed below and is subject to change without notice.

Model No : 215TBDW7027

(Model No. may contain prefix and/or suffix characters)

Catalog No : Z413

Rework No : N/A

Directives :

Low Voltage Directive 2014/35/EU

Harmonized Standards Used :

EN 60034-1: 2010 (IEC 60034-1: 2010)

EN 60034-5: 2001/A1:2007 (IEC 60034-5: 2000/A1:2006)

Authorized Representative:



Michael A. Logsdon  
Vice President, Technology

Authorized Representative in the Community:



Julian Clark  
Marketing Engineer

Created on 09/01/2022

**CE 22**