

# PRODUCT INFORMATION PACKET

Model No: 215TBDW17003

Catalog No: Z315A

Crop Dryer Motor, 10 & 15 HP, 1 Ph, 60 & 60 Hz, 230 & 230 V, 3600 & 3600 RPM, 215TZ Frame, DP



Regal and Marathon are trademarks of Regal Rexnord Corporation or one of its affiliated companies.

©2023 Regal Rexnord Corporation, All Rights Reserved. MC017097E

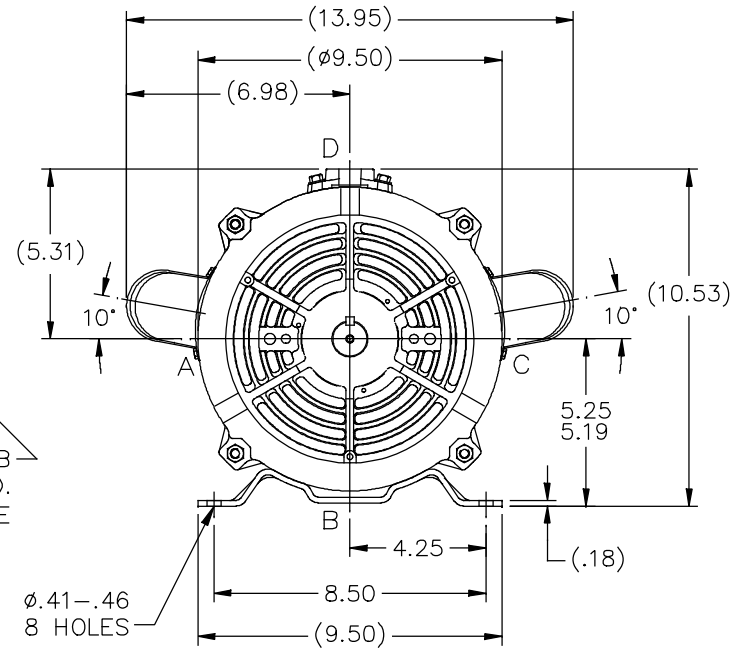
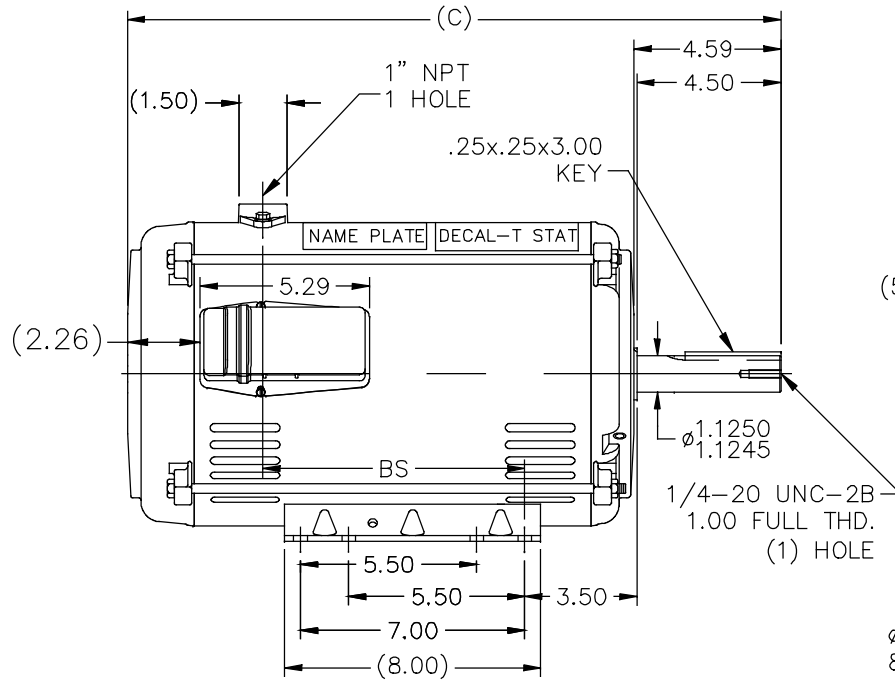
### Nameplate Specifications

Phase	1	Output HP	10 & 15 Hp
Output KW	7.5 & 11.2 kW	Voltage	230 & 230 V
Speed	3520 & 3455 rpm	Service Factor	1.15 & 1.0
Frame	215TZ	Enclosure	Drip Proof
Thermal Protection	No Protection	Efficiency	85.5 & 85.5 %
Ambient Temperature	40 °C	Frequency	60 & 60 Hz
Current	39.5 & 61.5 A	Power Factor	82
Duty	Continuous	Insulation Class	F
Design Code	L	KVA Code	G
Drive End Bearing Size	6307	Opp Drive End Bearing Size	6206
UL	Recognized	CSA	Y
CE	N	IP Code	12
Number of Speeds	1		

### Technical Specifications

Electrical Type	Capacitor Start Capacitor Run	Starting Method	Across The Line
Poles	2	Rotation	Selective Counterclockwise
Resistance Main	.113 Ohms	Mounting	Rigid Base
Motor Orientation	Horizontal	Drive End Bearing	Ball
Opp Drive End Bearing	Ball	Frame Material	Rolled Steel
Shaft Type	Single Special Extension	Overall Length	20.42 in
Frame Length	12.40 in	Shaft Diameter	1.125 in
Shaft Extension	4.59 in	Assembly/Box Mounting	F3
Outline Drawing	SS87934-1240	Connection Drawing	EE9048PH

SS87934



DASH	FR.	C	BS	MOUNTING
1240	213/15T	20.42	8.18	

NOTES:

1. NAMEPLATE TO BE READ FROM 'A' SIDE OF MOTOR.
2. SEE MODEL FOR LEAD LENGTH.

NO.	REVISION	BY & DATE	CHK	ANG	TOLERANCES UNLESS SPECIFIED	DEC.	INCHES	FINISH	PREV
9	DRAWING UPDATED PER ECR-0144149	MVG 11/13/17	ST						
8	UPDATED DECAL LOCATION	MVG 06/30/17							
7	DRAWING UPDATED PER ECR-0132121	MVG 05/08/2017		.X			±.1		
6	REPLACED ADAPTER PLATE W/LEESON PLATE 07-1734	MSG 11-14-2008	MSG	.XX			±.03		
5	UPDATED DRAWING	TJW 04/30/2007		.XXX			±.005		
4	UPDATED TO CURRENT STANDARDS	RLW 07-22-2003		.XXXX			±.0005		
							±7'30"		

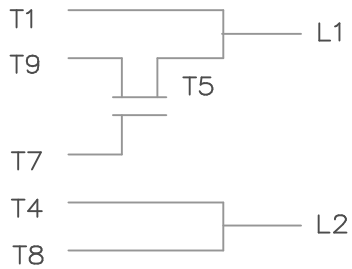
THIS DRAWING IN DESIGN AND DETAIL IS OUR PROPERTY AND MUST NOT BE USED EXCEPT IN CONNECTION WITH OUR WORK ALL RIGHTS OF DESIGN AND INVENTION ARE RESERVED THIS IS AN ELECTRONICALLY GENERATED DOCUMENT - DO NOT SCALE THIS PRINT					RFP	CAD FILE	ss87934	SIZE	A	DRAWING NO.	SS87934	PAGE	OF	REV.
					DIST	LB								9


**Regal Beloit America, Inc.**  
 DRAWN MJD 08-24-1999  
 CHK ML 08-25-1999  
 APPD DR 08-25-1999  
 SCALE 1=5  
 REF  
 FMF  
 PREV

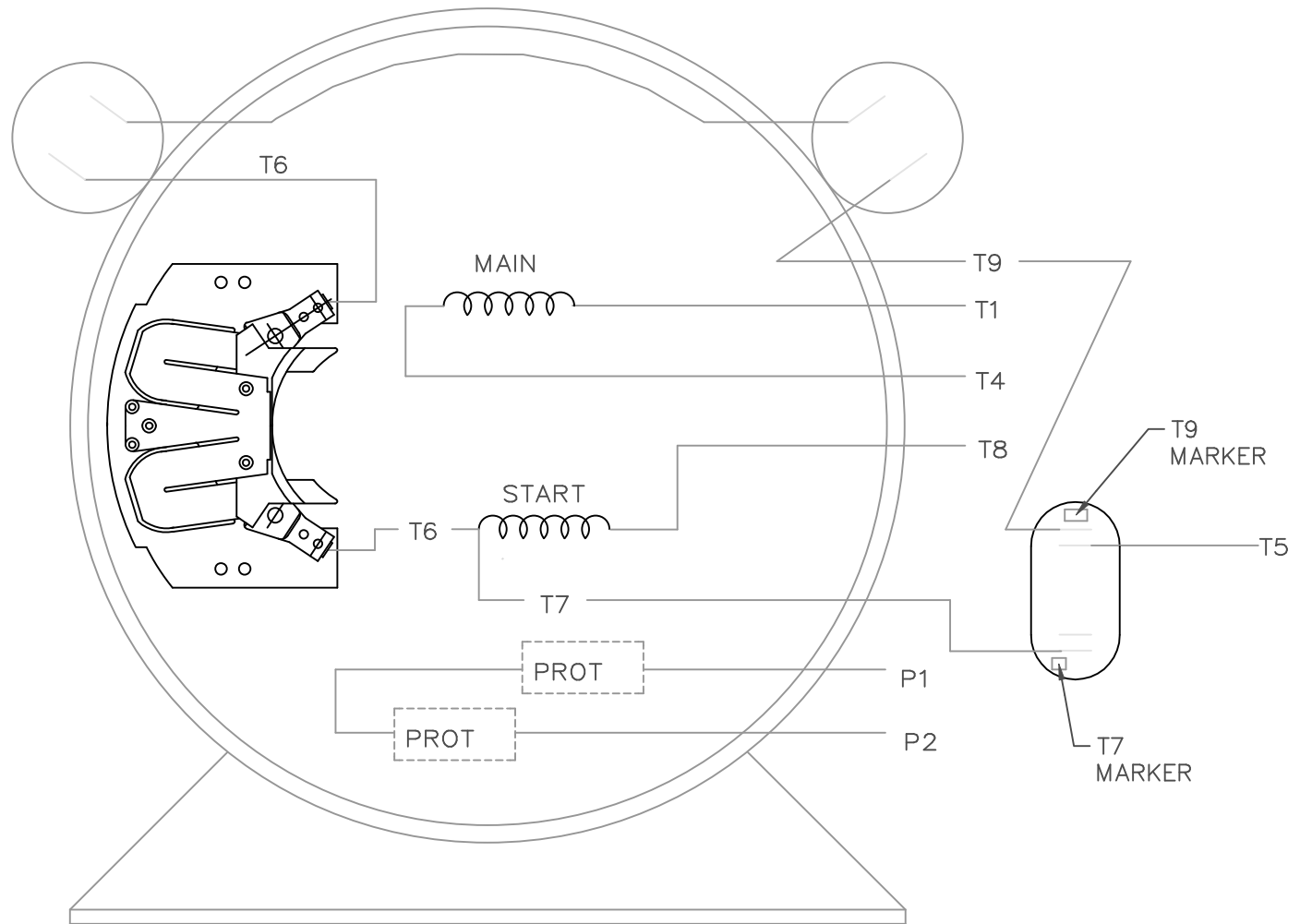
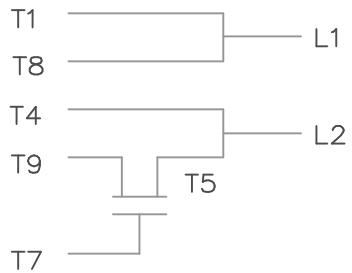
TITLE OUTLINE - DR.PR.  
210T FR. - BB - SS - SINGLE PHASE

CONNECT:  
START CAPACITORS IN SERIES

C.W. ROTATION



C.C.W. ROTATION



SINGLE VOLTAGE  
CAPACITOR START  
CAPACITOR RUN  
REVERSIBLE

VIEW OF TERMINAL END

		TOLERANCES UNLESS SPECIFIED		LEESON	ELECTRIC MOTORS GEARMOTORS AND DRIVES	DRAWN MJD 08/24/99			
		DEC.	INCHES			CHK ML 08/25/99	APPD DR 08/26/99	SCALE 1=1	
03	UPDATED TO CURRENT STANDARDS	RLW	7/22/03	.XX	±.01	TITLE	CONNECTION DIAGRAM	REF	
02	T5 WAS T9 @ RUN CAP CN 27700-866	MJD	09/27/99	.XXX	±.005	MAT'L.		FMF	
01	NEW DRAWING MU26425	MJD	08/26/99	.XXXX	±.0005	FINISH		PREV	
NO.	REVISION	BY & DATE	CHK	ANG	±1/2'	CAD FILE	EE9048PH	DRAWING NO.	
THIS DRAWING IN DESIGN AND DETAIL IS OUR PROPERTY AND MUST NOT BE USED EXCEPT IN CONNECTION WITH OUR WORK ALL RIGHTS OF DESIGN AND INVENTION ARE RESERVED THIS IS AN ELECTRONICALLY GENERATED DOCUMENT - DO NOT SCALE THIS PRINT		RFP		DIST	WA-LB-WP-LM-BR	SIZE	A	A- EE9048PH	REV. 03

**CONN. DIAGRAM:** EE9048PH

**MODEL #:** 215TBDW17003 AA

**OUTLINE:** SS87934-1240

**MOUNTING:** F3

**WINDING #:** BK10270 DR 1

**TYPICAL MOTOR PERFORMANCE DATA**

HP	kW	SYNC. RPM	F.L. RPM	FRAME	ENCLOSURE	KVA CODE	DESIGN
10&15	7.50&11.2	3600	3520&3455	215TZ	DP	G	L

PH	Hz	VOLTS	AMPS	START TYPE	DUTY	INSL	S.F.	AMB°C
1	60/60	230&230	39.5&61.5	ACROSS THE LINE	CONTINUOUS	F4	1.15/1.0	40

FULL LOAD EFF:	85.5&85.5	3/4 LOAD EFF:	85	1/2 LOAD EFF:	84	GTD. EFF	ELEC. TYPE
FULL LOAD PF:	82&80	3/4 LOAD PF:	93.5	1/2 LOAD PF:	90.5	0	CAP START CAP RUN

F.L. TORQUE	LOCKED ROTOR AMPS	L.R. TORQUE	B.D. TORQUE	F.L. RISE°C
22.7 LB-FT	322	36.2 LB-FT 159 %	48.3 LB-FT 213 %	40

SOUND PRESSURE @ 3 FT.	SOUND POWER	ROTOR WK^2	MAX. WK^2	SAFE STALL TIME	STARTS / HOUR	APPROX. MOTOR WGT
- dBA	- dBA	0.89 LB-FT^2	0.9 LB-FT^2	- SEC.	-	0 LBS.

**\*\*\* SUPPLEMENTAL INFORMATION \*\*\***

DE BRACKET TYPE	ODE BRACKET TYPE	MOUNT TYPE	ORIENTATION	SEVERE DUTY	HAZARDOUS LOCATION	DRIP COVER	SCREENS	PAINT
STANDARD	STANDARD	RIGID	HORIZONTAL	FALSE	NONE	FALSE	NONE	BLUE (ENAMEL)

BEARINGS		GREASE	SHAFT TYPE	SPECIAL DE	SPECIAL ODE	SHAFT MATERIAL	FRAME MATERIAL
DE	ODE						
BALL	BALL	POLYREX EM	SGL SPL EXT	1.125 x 4.50 IN SEK	NONE	1045 HOT ROLLED (C-204)	ROLLED STEEL
6307	6206						

THERMO-PROTECTORS				THERMISTORS	CONTROL	SPACE HEATERS
THERMOSTATS	PROTECTORS	WDG RTDs	BRG RTDs			
TSTATS (N/C)	NOT	NONE	NONE	NONE	FALSE	NONE VOLTS

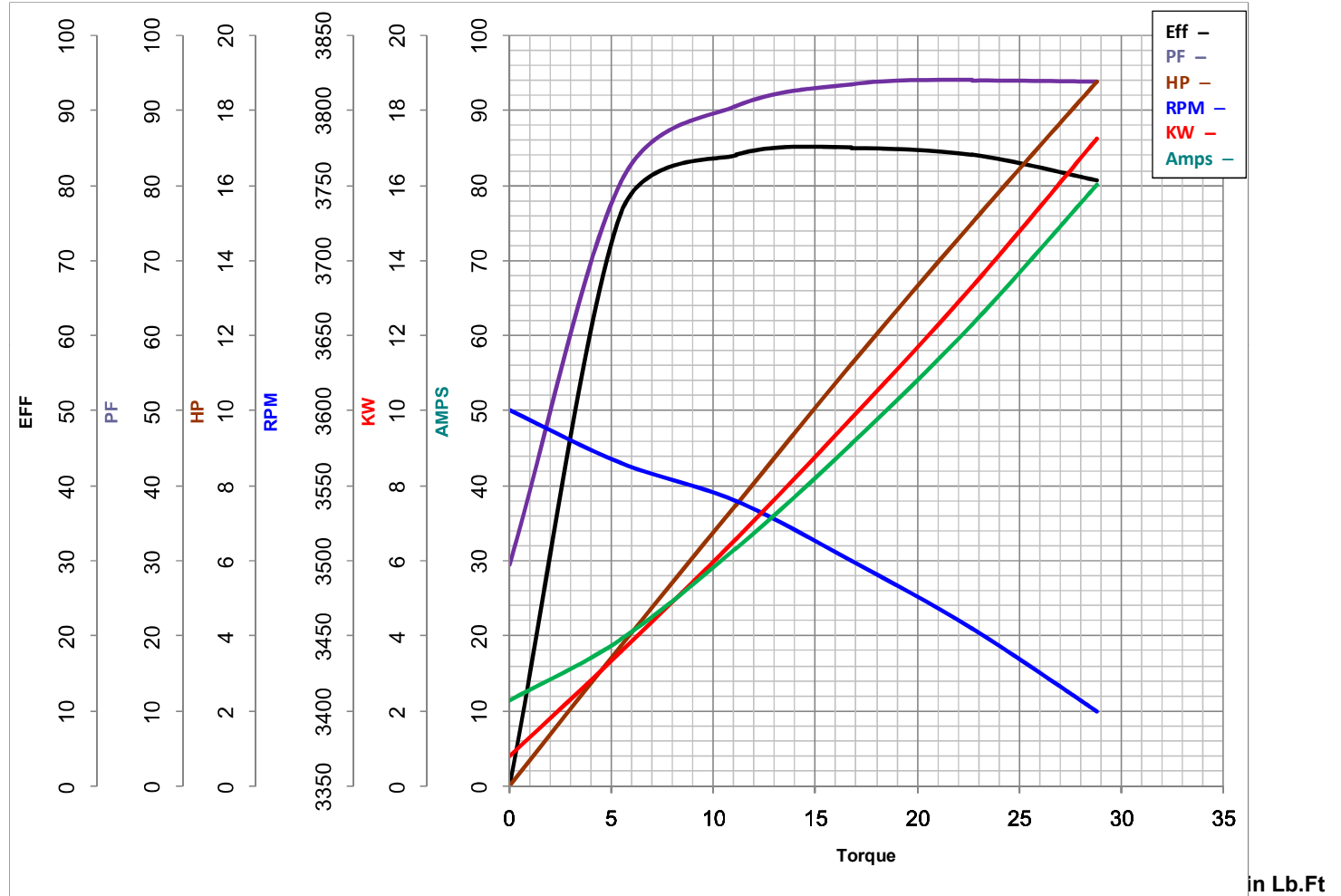
\*  
N  
O  
T  
E  
S  
\*

<b>INVERTER TORQUE:</b> NONE
<b>INV. HP SPEED RANGE:</b> NONE
<b>ENCODER:</b> NONE
NONE NONE
NONE NONE PPR
<b>BRAKE:</b> NONE NONE
NONE P/N NONE
NONE NONE
NONE FT-LB NONE V NONE Hz

**MARATHON ELECTRIC CORPORATION**

TYPICAL PERFORMANCE CURVE for AC MOTOR

Customer \_\_\_\_\_ Curve at 230 Volts HP 10&15 PHASE 1  
 Model No 215TBDW17003 60 HZ  
15 HP VOLTS 230&230  
 Catalog No Z315A HZ 60&60 RPM 3520&3455



FL TORQUE	<u>22.7</u>	Lb.Ft	FL AMPS	<u>39.5</u>	
BD TORQUE	<u>48.3</u>	Lb.Ft	PU TORQUE	<u>35.8</u>	Lb.Ft
LR TORQUE	<u>36.2</u>	Lb.Ft	LR AMPS	<u>322</u>	
WINDING	BK10270-1	Prepared By	ANUSHA.M	Date	11/5/2018