

PRODUCT INFORMATION PACKET

Model No: 213VTDC6002

Catalog No: V109A

Vertical Pump Motor, 10 & 7.5 HP, 3 Ph, 60 & 50 Hz, 230/460 & 190/380 V, 3600 & 3000 RPM,
213TPV Frame, WPI



Regal and Marathon are trademarks of Regal Rexnord Corporation or one of its affiliated companies.

©2023 Regal Rexnord Corporation, All Rights Reserved. MC017097E

Nameplate Specifications

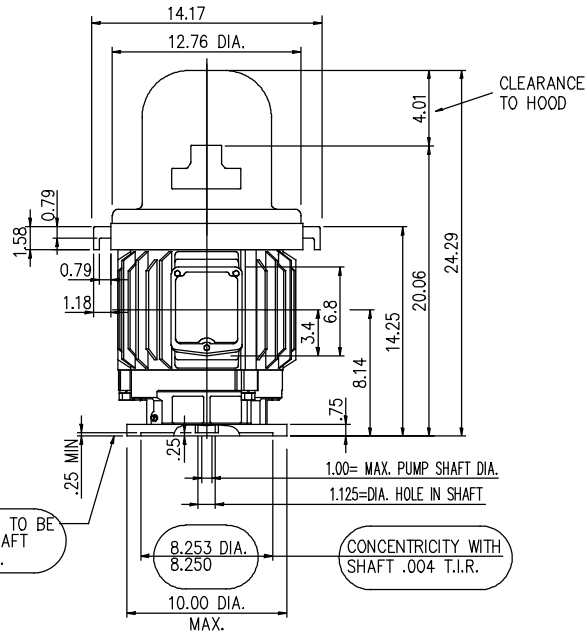
Phase	3	Output HP	10 & 7.5 Hp
Output KW	7.5 & 5.6 kW	Voltage	230/460 & 190/380 V
Speed	3510 & 2925 rpm	Service Factor	1.15 & 1.15
Frame	213TPV	Enclosure	Weather Protected 1
Thermal Protection	No Protection	Efficiency	89.5 & 87.5 %
Ambient Temperature	40 °C	Frequency	60 & 50 Hz
Current	25/12.5 & 23.6/11.8 A	Power Factor	84
Duty	Continuous	Insulation Class	F
Design Code	B	KVA Code	H
Drive End Bearing Size	6209	Opp Drive End Bearing Size	7309B
UL	Recognized	CSA	Y
CE	Y	IP Code	23
Number of Speeds	1		

Technical Specifications

Electrical Type	Squirrel Cage Inverter Rated	Starting Method	Part Wdg Start Low Volt Only & Wye Start Delta Run Or Inverter
Poles	2	Rotation	Counterclockwise Rotation, Reversible without Non-Reversible Ratchet
Resistance Main	0 Ohms	Mounting	Round
Motor Orientation	Shaft Down	Drive End Bearing	Ball
Opp Drive End Bearing	Single Angular Contact	Frame Material	Cast Iron
Shaft Type	TP	Overall Length	24.49 in
Shaft Diameter	1.125 in	Shaft Extension	0.25 in
Assembly/Box Mounting	F1/F2 CAPABLE	Inverter Load	VARIABLE 3:1
Outline Drawing	SS620833	Connection Drawing	EE7308DX

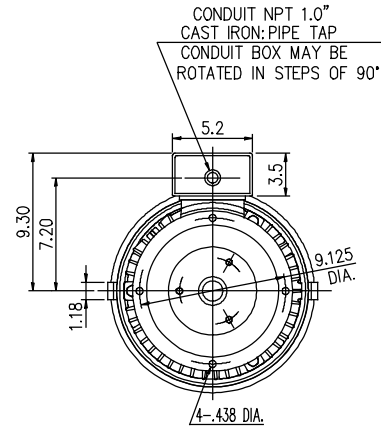
COUPLING	BX DIA.	KEYWAY		BY	BZ	XF	XC
		WIDE	DEEP				
	1.001	0.250	0.140	10-32UNF	1.375	1.650	0.430
	0.751	N/A	N/A	N/A	N/A	N/A	N/A

SS620833



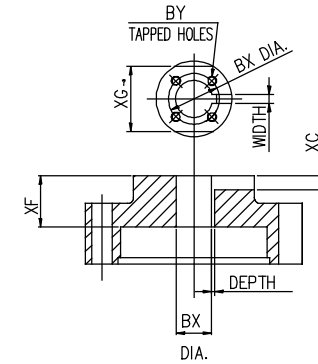
FACE OF FLANGE TO BE SQUARE WITH SHAFT WITHIN .004 T.I.R.

CONCENTRICITY WITH SHAFT .004 T.I.R.



BOTTOM VIEW OF MOTOR

CONDUIT NPT 1.0" CAST IRON PIPE TAP CONDUIT BOX MAY BE ROTATED IN STEPS OF 90°

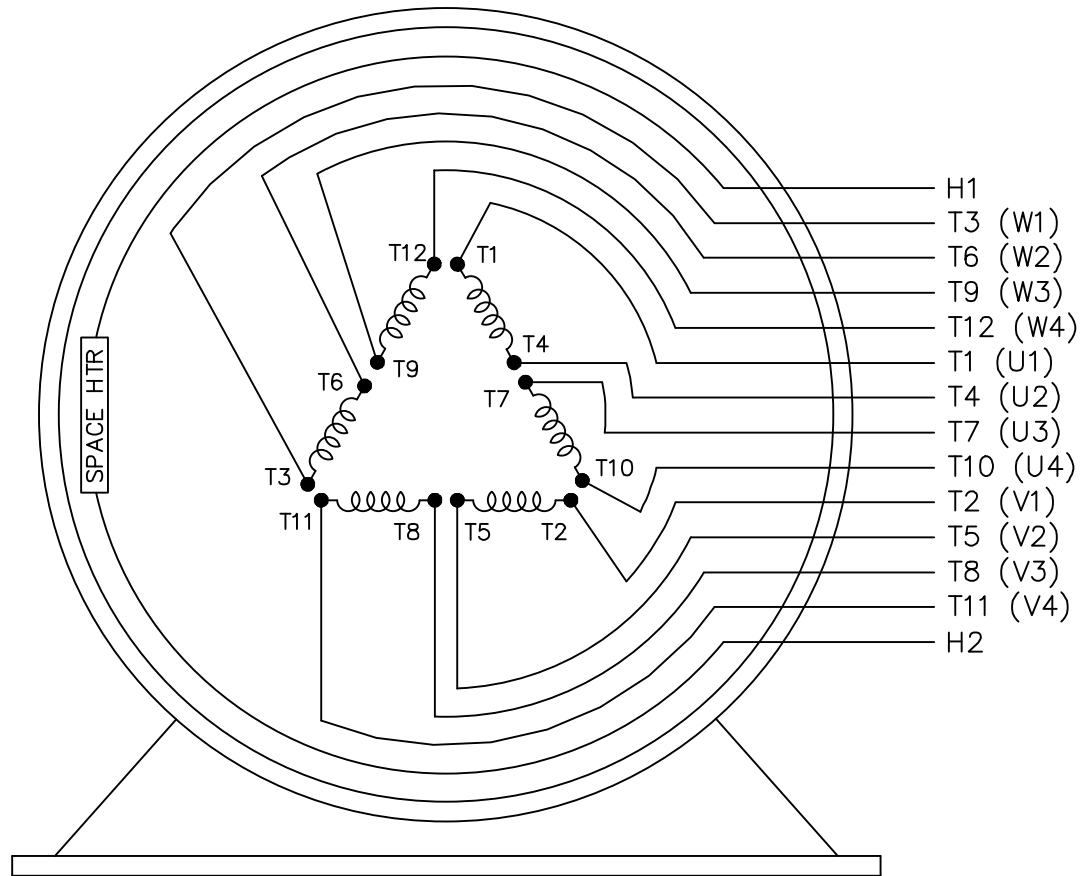
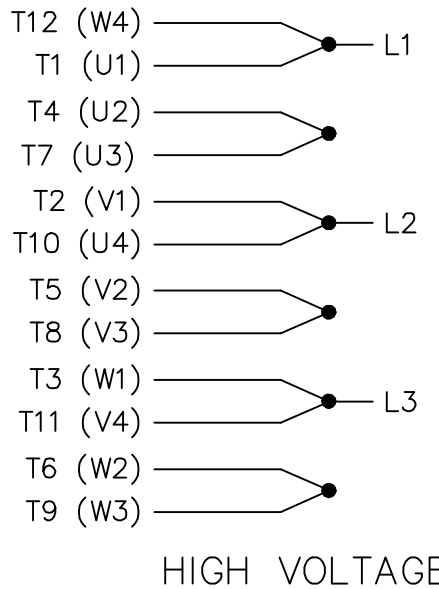
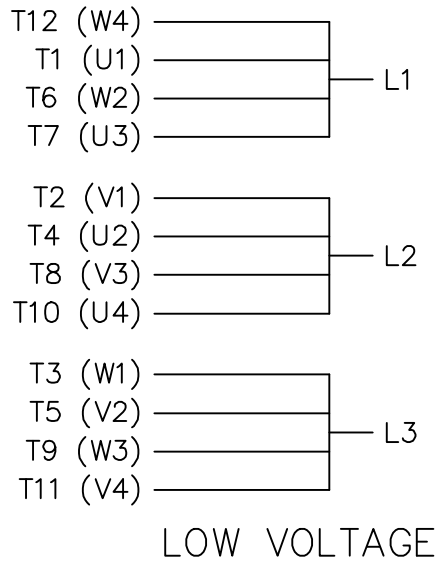


COUPLING

- (1) DIMENSIONS ARE IN INCHES
- (2) APPROXIMATE WEIGHT = 200 LBS
- (3) DRIVE END BEARING 6209
- OPPOSITE DRIVE END BEARING 7309B

(4) END OF LINE TESTS - SPECIFIC TO EACH RATING
 *NO LOAD AMPS @ FULL VOLTAGE
 *NO LOAD WATTS @ FULL VOLTAGE
 *VIBRATION MEETS MG-1 STANDARD
 BALANCE 0.15 IN/S 3.8 MM/S

		TOLERANCES UNLESS SPECIFIED		REGAL REGAL-BELOIT CORPORATION		DRAWN	
		DEC.	INCHES			CHK	
		X	±.1			APPD	
C	UPDATED PER MARK-UPS ECD-0151417	VGJ	9-7-2018	AL	XX	±.03	SCALE
B	RE-PUBLISHED ECD-0125813	VGJ	9-21-2017	EMH	XXX	±.005	REF
A	RELEASED ECD-0125213	VGJ	6-13-2017	AL	XXXX	±.0005	FMF
NO.	REVISION	BY & DATE		CHK	ANG	±7°30'	PREV
THIS DRAWING IN DESIGN AND DETAIL IS OUR PROPERTY AND MUST NOT BE USED EXCEPT IN CONNECTION WITH OUR WORK. ALL RIGHTS OF DESIGN AND INVENTION ARE RESERVED. THIS IS AN ELECTRONICALLY GENERATED DOCUMENT - DO NOT SCALE THIS PRINT.				RFP	CAD FILE		SIZE
				DIST			DRAWING NO.
						B	SS620833
							REV. C



VIEW OF TERMINAL END

				TOLERANCES UNLESS SPECIFIED		MARATHON ELECTRIC	DRAWN KL 02-05-1999			
				DEC.	INCHES		CHK DJK 02-05-1999			
				.X	± -	TITLE CONNECTION DIAGRAM 12 LEADS - 3 PHASE - 2/1 DELTA	APPD DJK 02-05-1999	SCALE 1=1		
2	ADDED IEC MARKINGS	MU110339	MSG 10-15-2012	.XXX	± -		REF			
1	NEW DRAWING	MU23624	KL 02-05-1999	DJK .XXXX	± -	MAT'L.	FMF	MU23624		
NO.	REVISION	BY & DATE	CHK	ANG	± -	FINISH	PREV			
THIS DRAWING IN DESIGN AND DETAIL IS OUR PROPERTY AND MUST NOT BE USED EXCEPT IN CONNECTION WITH OUR WORK ALL RIGHTS OF DESIGN AND INVENTION ARE RESERVED THIS IS AN ELECTRONICALLY GENERATED DOCUMENT - DO NOT SCALE THIS PRINT				RFP	02-05-1999	CAD FILE EE7308DX	SIZE A	DRAWING NO. EE7308DX	PAGE OF 2	REV. 2
				DIST						

CERTIFICATION DATA SHEET

CONN. DIAGRAM: EE7308DX

MODEL #: 213VTDC6002 AA

OUTLINE: SS620833

MOUNTING: F1/F2 CAPABLE

WINDING #: TPE2132002 1

TYPICAL MOTOR PERFORMANCE DATA

HP	kW	SYNC. RPM	F.L. RPM	FRAME	ENCLOSURE	KVA CODE	DESIGN
10&7 1/2	7.50&5.60	3600	3510&2925	213TPV	WPI	H	B

PH	Hz	VOLTS	AMPS	START TYPE	DUTY	INSL	S.F.	AMB° C
3	60/50	230/460&190/380	25/12.5&23.6/11.8	PWS (LV ONLY) & YDRUN OR INV	CONTINUOUS	F	1.15/1.15	40

FULL LOAD EFF:	89.5&87.5	3/4 LOAD EFF:	89.5	1/2 LOAD EFF:	88.5	GTD. EFF		ELEC. TYPE	
FULL LOAD PF:	84&82	3/4 LOAD PF:	82	1/2 LOAD PF:	75	88.5		SQ CAGE INV RATED	

F.L. TORQUE	LOCKED ROTOR AMPS	L.R. TORQUE	B.D. TORQUE	F.L. RISE°C
15 LB-FT	172 / 86	30 LB-FT 202 %	50 LB-FT 336 %	35

SOUND PRESSURE @ 3 FT.	SOUND POWER	ROTOR WK^2	MAX. WK^2	SAFE STALL TIME	STARTS / HOUR	APPROX. MOTOR WGT
60 dBA	70 dBA	0.5 LB-FT^2	- LB-FT^2	20 SEC.	2	205 LBS.

***** SUPPLEMENTAL INFORMATION *****

DE BRACKET TYPE	ODE BRACKET TYPE	MOUNT TYPE	ORIENTATION	SEVERE DUTY	HAZARDOUS LOCATION	DRIP COVER	SCREENS	PAINT
P-BASE-10	STANDARD	ROUND	SHAFT DOWN	FALSE	NONE	TRUE	RODENT	BLUE (ENAMEL)

BEARINGS		GREASE	SHAFT TYPE	SPECIAL DE	SPECIAL ODE	SHAFT MATERIAL	FRAME MATERIAL
DE	ODE						
BALL	SINGLE ANGULAR CONTACT	POLYREX EM	TP	NONE	NONE	1045 HOT ROLLED (C-204)	CAST IRON
6209	7309B						

THERMO-PROTECTORS				THERMISTORS	CONTROL	SPACE HEATERS
THERMOSTATS	PROTECTORS	WDG RTDs	BRG RTDs			
NONE	NOT	NONE	NONE	NONE	FALSE	110 VOLTS

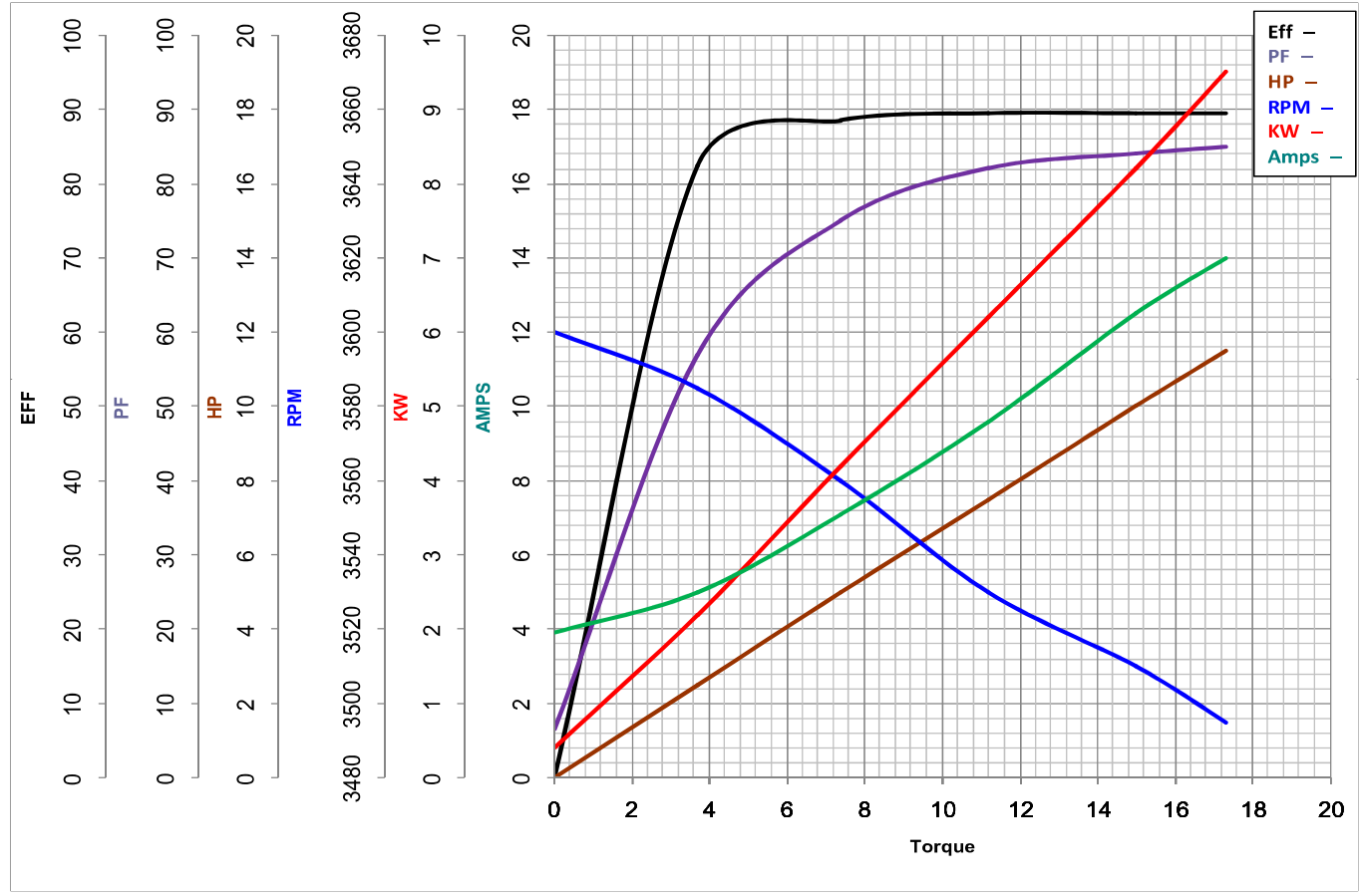
*
N
O
T
E
S

INVERTER TORQUE: VARIABLE 3:1
INV. HP SPEED RANGE: NONE
ENCODER: NONE
NONE NONE
NONE NONE PPR
BRAKE: NONE NONE
NONE P/N NONE
NONE NONE
NONE FT-LB NONE V NONE Hz

MARATHON ELECTRIC CORPORATION

TYPICAL PERFORMANCE CURVE for AC MOTOR

Customer _____ Curve at 460 Volts HP 10&7.5 PHASE 3
 Model No 213VTDC6002 60 HZ
10 HP VOLTS 230/460&190/380
 Catalog No V109A HZ 60&50 RPM 3510&2925



				Torque in Lb.Ft	
FL TORQUE	<u>15</u>	Lb.Ft	FL AMPS	<u>25/12.5</u>	
BD TORQUE	<u>50.0</u>	Lb.Ft	PU TORQUE	<u>22.0</u>	Lb.Ft
LR TORQUE	<u>30</u>	Lb.Ft	LR AMPS	<u>86</u>	
WINDING	TPE2132002-1		Date	11/5/2018	

EC Declaration of Conformity

The undersigned representing
the manufacturer:

Regal Beloit America
100 East Randolph St.
Wausau, WI 54401

and the authorized representative
established within the Community:

Marathon Electric UK
6F Thistleton Road Ind. Estate
Market Overton
Oakham, Rutland LE15 7PP UK

are committed to providing customers with products that comply with applicable regulations and international protocols to which they are subject, including the requirements of the European Parliament Directive on the Harmonization of the laws relating to electrical equipment designed for use within certain voltage limits (2014/35/EU).

Regal Beloit America declares that the following product(s), to which this declaration relates, are in conformity with the relevant sections of the EC standards listed below.

This statement supersedes any statements previously issued pertaining to the product(s) listed below and is subject to change without notice.

Model No : 213VTDC6002

(Model No. may contain prefix and/or suffix characters)

Catalog No : V109A

Rework No : N/A

Directives :

Low Voltage Directive 2014/35/EU

Harmonized Standards Used :

EN 60034-1: 2010 (IEC 60034-1: 2010)

EN 60034-5: 2001/A1:2007 (IEC 60034-5: 2000/A1:2006)

Authorized Representative:



Michael A. Logsdon
Vice President, Technology

Authorized Representative in the Community:



Julian Clark
Marketing Engineer

Created on 09/01/2022

CE 22