

# PRODUCT INFORMATION PACKET

Model No: 213TTWR7026

Catalog No: N660

PowerWash™ XT Wash Down Duty™ General Purpose Motor, 7.50 & 5 HP, 3 Ph, 60 & 50 Hz,  
208-230/460 & 190/380 V, 1800 & 1500 RPM, 213TC Frame, TEFC



Regal and Marathon are trademarks of Regal Rexnord Corporation or one of its affiliated companies.

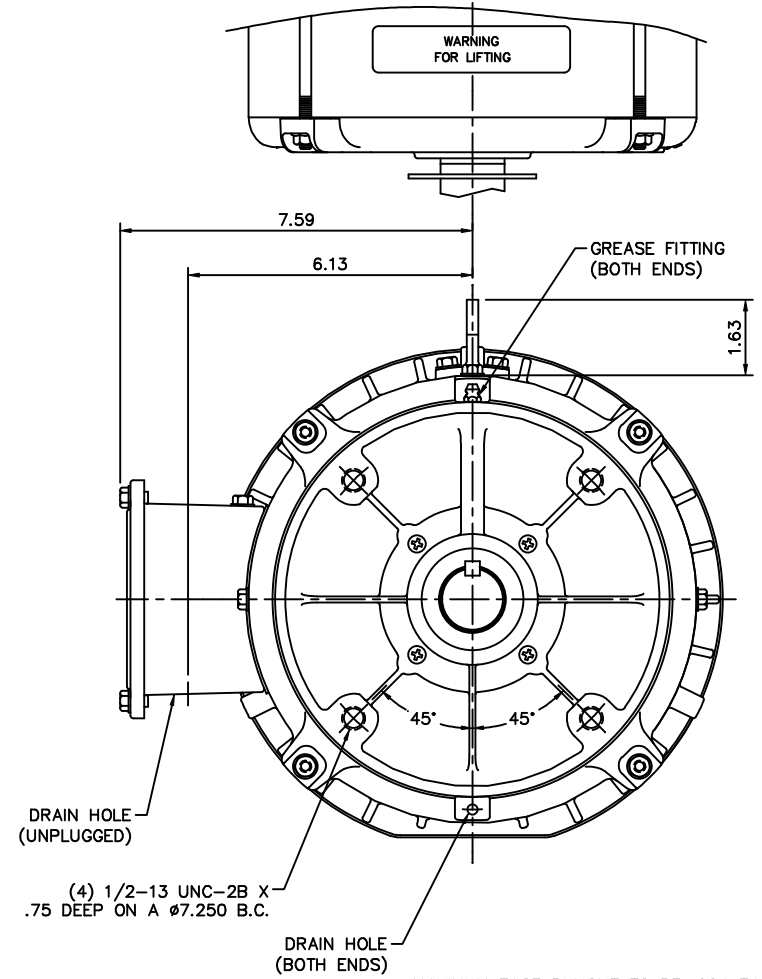
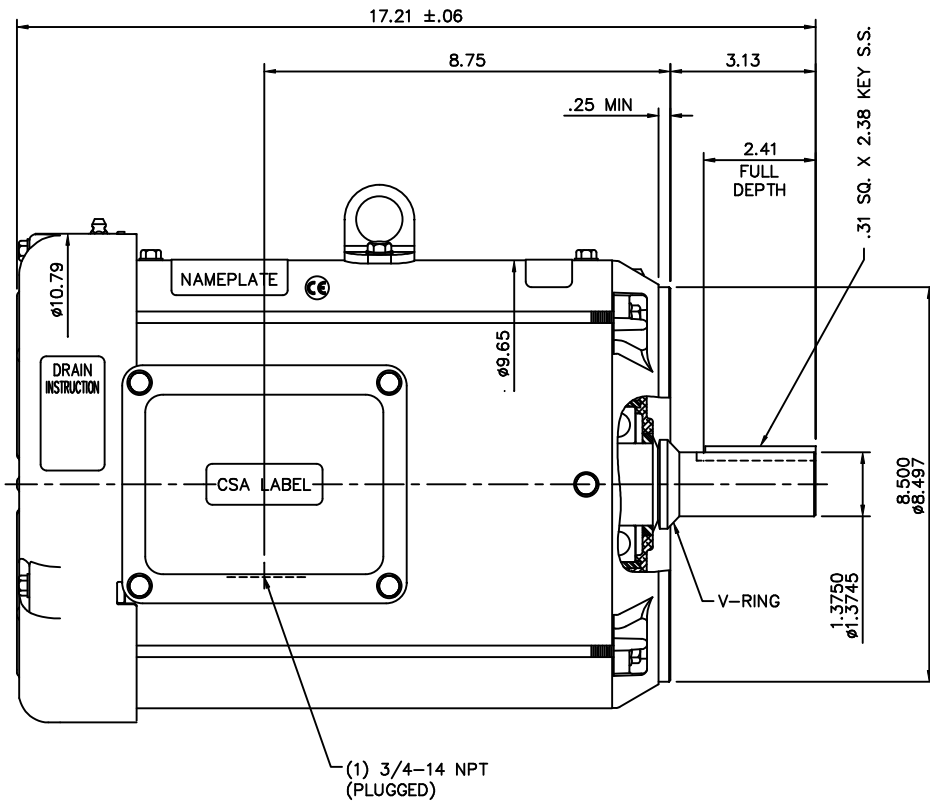
©2023 Regal Rexnord Corporation, All Rights Reserved. MC017097E

### Nameplate Specifications

|                        |                              |                            |                                    |
|------------------------|------------------------------|----------------------------|------------------------------------|
| Phase                  | <b>3</b>                     | Output HP                  | <b>7.50 &amp; 5 Hp</b>             |
| Output KW              | <b>5.6 &amp; 3.7 kW</b>      | Voltage                    | <b>208-230/460 &amp; 190/380 V</b> |
| Speed                  | <b>1760 &amp; 1450 rpm</b>   | Service Factor             | <b>1.15 &amp; 1.15</b>             |
| Frame                  | <b>213TC</b>                 | Enclosure                  | <b>Totally Enclosed Fan Cooled</b> |
| Thermal Protection     | <b>No Protection</b>         | Efficiency                 | <b>89.5 %</b>                      |
| Ambient Temperature    | <b>40 °C</b>                 | Frequency                  | <b>60 &amp; 50 Hz</b>              |
| Current                | <b>24-22/11 &amp; 18/9 A</b> | Power Factor               | <b>72</b>                          |
| Duty                   | <b>Continuous</b>            | Insulation Class           | <b>F</b>                           |
| Design Code            | <b>B</b>                     | KVA Code                   | <b>H</b>                           |
| Drive End Bearing Size | <b>6209</b>                  | Opp Drive End Bearing Size | <b>6206</b>                        |
| UL                     | <b>Recognized</b>            | CSA                        | <b>Y</b>                           |
| CE                     | <b>Y</b>                     | IP Code                    | <b>55</b>                          |
| Number of Speeds       | <b>1</b>                     |                            |                                    |

### Technical Specifications

|                       |                                    |                   |                        |
|-----------------------|------------------------------------|-------------------|------------------------|
| Electrical Type       | <b>Squirrel Cage Induction Run</b> | Starting Method   | <b>Across The Line</b> |
| Poles                 | <b>4</b>                           | Rotation          | <b>Reversible</b>      |
| Resistance Main       | <b>1.228 Ohms</b>                  | Mounting          | <b>Round</b>           |
| Motor Orientation     | <b>Horizontal</b>                  | Drive End Bearing | <b>Ball</b>            |
| Opp Drive End Bearing | <b>Ball</b>                        | Frame Material    | <b>Rolled Steel</b>    |
| Shaft Type            | <b>T</b>                           | Overall Length    | <b>17.21 in</b>        |
| Shaft Diameter        | <b>1.375 in</b>                    | Shaft Extension   | <b>3.38 in</b>         |
| Assembly/Box Mounting | <b>F1 Only</b>                     |                   |                        |
| Connection Drawing    | <b>005010.01ME</b>                 | Outline Drawing   | <b>OL140801</b>        |



MAXIMUM FACE RUNOUT TO BE .004 T.I.R.  
 MAXIMUM PILOT ECCENTRICITY TO BE .004 T.I.R.  
 PERMISSIBLE SHAFT RUNOUT TO BE .002 T.I.R.

**SPECIAL FEATURES:**

- BUNA-N GASKETS THROUGHOUT
- SHAFT SEALS - BOTH ENDS OF MOTOR
- V-RING AT SHAFT END OF MOTOR
- STAINLESS STEEL SHAFT, NAMEPLATE & HARDWARE

|  |          | TOLERANCES UNLESS SPECIFIED |               |                       | DRAWN VS 02/28/08      |
|--|----------|-----------------------------|---------------|-----------------------|------------------------|
|  |          | DEC.                        | INCHES        |                       | CHK LST 02/28/08       |
|  |          | .X                          | ±.1           |                       | APPD                   |
|  |          | .XX                         | ±.03          | TITLE                 | SCALE 3=8              |
|  |          | .XXX                        | ±.005         | OUTLINE - 213TC FRAME | REF 037607             |
|  |          | .XXXX                       | ±.0005        | TEFC - "C" FACE       |                        |
|  |          |                             |               | MAT'L                 | FMF                    |
|  |          |                             |               | WASHGUARD             | PREV                   |
| NO.  | REVISION | BY & DATE                   | CHK ANG ±1/2" | FINISH                |                        |
| THIS DRAWING IN DESIGN AND DETAIL IS OUR PROPERTY AND MUST NOT BE USED EXCEPT IN CONNECTION WITH OUR WORK ALL RIGHTS OF DESIGN AND INVENTION ARE RESERVED THIS IS AN ELECTRONICALLY GENERATED DOCUMENT - DO NOT SCALE THIS PRINT |          |                             |               | RFP                   |                        |
|  |          |                             |               | DIST                  |                        |
|  |          |                             |               | CAD FILE              | OL140801               |
|  |          |                             |               | SIZE                  | DRAWING NO. B OL140801 |
|  |          |                             |               |                       | REV.                   |

VIEW FROM OUTSIDE OF MOTOR AT SWITCH END.



| VOLTAGE | L1    | L2    | L3    | JOIN & INSULATE               |
|---------|-------|-------|-------|-------------------------------|
| HIGH    | T1    | T2    | T3    | (T4,T7)<br>(T5,T8)<br>(T6,T9) |
| LOW     | T1,T7 | T2,T8 | T3,T9 | T4,T5,T6                      |

|     |          | TOLERANCES UNLESS SPECIFIED |        | DRAWN RDW 04/12/02 |       |          |      |             |      |
|-----|----------|-----------------------------|--------|--------------------|-------|----------|------|-------------|------|
|     |          | DEC.                        | INCHES | CHK                |       |          |      |             |      |
|     |          | .X                          | ±.1    | APPD               |       |          |      |             |      |
|     |          | .XX                         | ±.01   | SCALE 1=1          |       |          |      |             |      |
|     |          | .XXX                        | ±.005  | REF FIG.2-51       |       |          |      |             |      |
|     |          | .XXXX                       | ±.0005 | FMF                |       |          |      |             |      |
| NO. | REVISION | BY & DATE                   | CHK    | ANG                | ±1/2' | FINISH   | SIZE | DRAWING NO. | REV. |
|     |          |                             | RFP    | 04/12/02           |       | CAD FILE | A    | 005010-01ME |      |
|     |          |                             |        |                    |       |          |      |             |      |



TITLE EXTERNAL WIRING DIAGRAM  
3 PHASE W/O PROTECTOR  
MAT'L. DECAL - 004014

THIS DRAWING IN DESIGN AND DETAIL IS OUR PROPERTY AND MUST NOT BE USED EXCEPT IN CONNECTION WITH OUR WORK ALL RIGHTS OF DESIGN AND INVENTION ARE RESERVED THIS IS AN ELECTRONICALLY GENERATED DOCUMENT - DO NOT SCALE THIS PRINT