

# PRODUCT INFORMATION PACKET

marathon®  
Motors

Model No: 213TTWDD6031

Catalog No: N408B

PowerWash™SXT-Plus Wash Down Duty™ General Purpose Motor, 7.50 & 5 HP, 3 Ph, 60 & 50 Hz,  
230/460 & 190/380 V, 1800 & 1500 RPM, 213TC Frame, TEFC



Regal and Marathon are trademarks of Regal Rexnord Corporation or one of its affiliated companies.

©2023 Regal Rexnord Corporation, All Rights Reserved. MC017097E

RegalRexnord



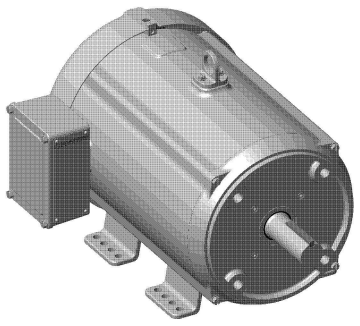
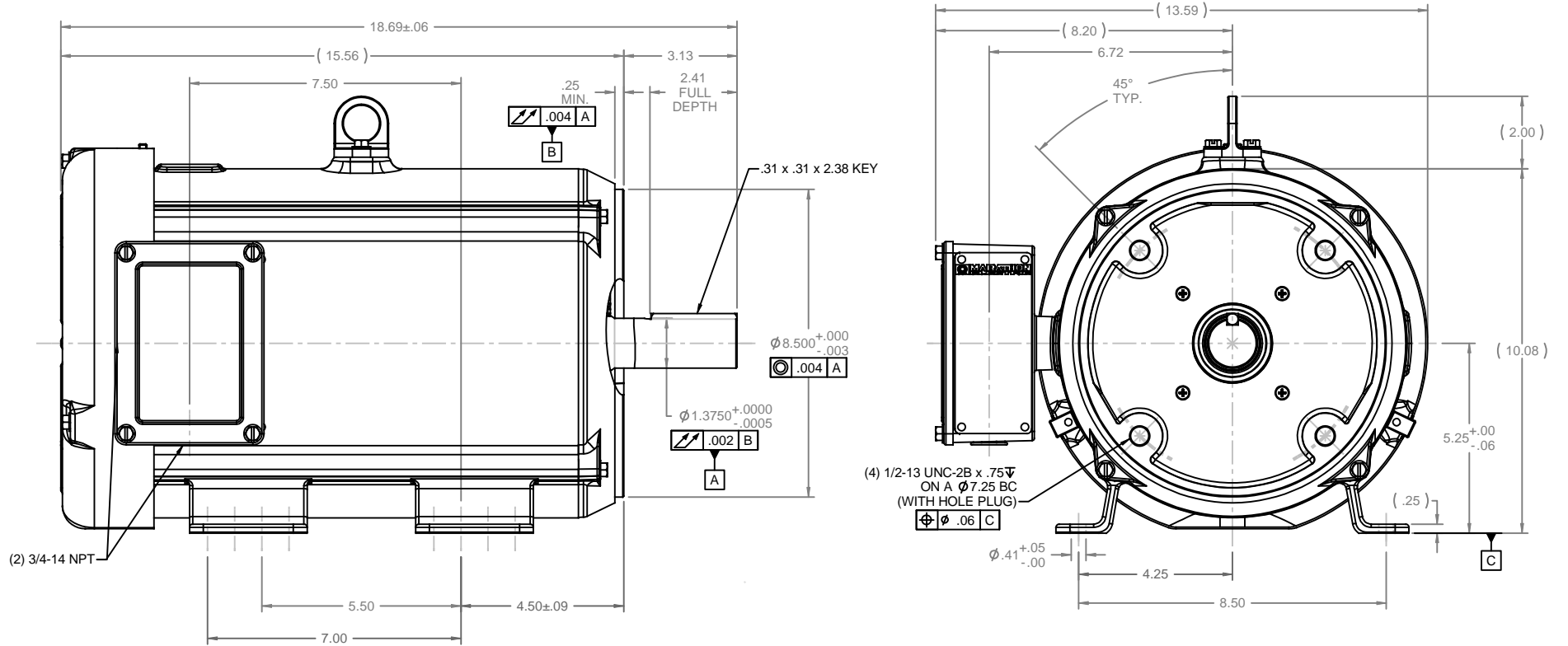
### Nameplate Specifications

Phase	<b>3</b>	Output HP	<b>7.50 &amp; 5 Hp</b>
Output KW	<b>5.6 &amp; 3.7 kW</b>	Voltage	<b>230/460 &amp; 190/380 V</b>
Speed	<b>1765 &amp; 1475 rpm</b>	Service Factor	<b>1.15 &amp; 1.0</b>
Frame	<b>213TC</b>	Enclosure	<b>Totally Enclosed Fan Cooled</b>
Thermal Protection	<b>No Protection</b>	Efficiency	<b>91.7 &amp; 90.2 %</b>
Ambient Temperature	<b>40 °C</b>	Frequency	<b>60 &amp; 50 Hz</b>
Current	<b>19.6/9.8 &amp; 16.6/8.3 A</b>	Power Factor	<b>78.3</b>
Duty	<b>Continuous</b>	Insulation Class	<b>F</b>
Design Code	<b>B</b>	KVA Code	<b>H</b>
Drive End Bearing Size	<b>6209</b>	Opp Drive End Bearing Size	<b>6207</b>
UL	<b>Recognized</b>	CSA	<b>Y</b>
CE	<b>Y</b>	IP Code	<b>55</b>
Number of Speeds	<b>1</b>		

### Technical Specifications

Electrical Type	<b>Squirrel Cage Inverter Rated</b>	Starting Method	<b>Line Or Inverter</b>
Poles	<b>4</b>	Rotation	<b>Reversible</b>
Resistance Main	<b>1.18 Ohms</b>	Mounting	<b>Rigid Base</b>
Motor Orientation	<b>Horizontal</b>	Drive End Bearing	<b>Ball</b>
Opp Drive End Bearing	<b>Ball</b>	Frame Material	<b>Stainless Steel</b>
Shaft Type	<b>T</b>	Overall Length	<b>18.69 in</b>
Frame Length	<b>12.00 in</b>	Shaft Diameter	<b>1.375 in</b>
Shaft Extension	<b>3.13 in</b>	Assembly/Box Mounting	<b>F1 ONLY</b>
Inverter Load	<b>CONSTANT 3:1</b>		
Outline Drawing	<b>037617-1200</b>	Connection Drawing	<b>005010.01</b>

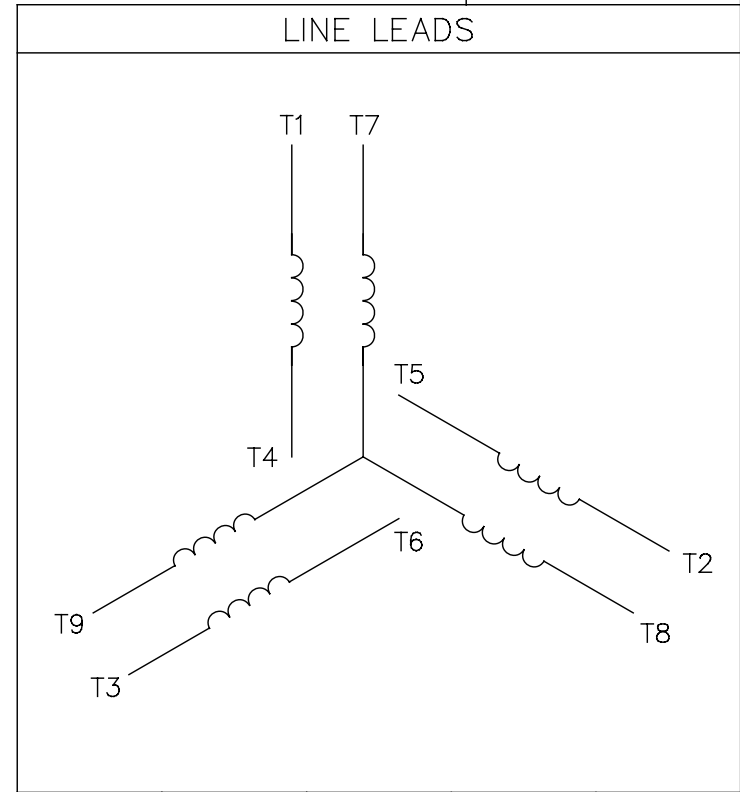
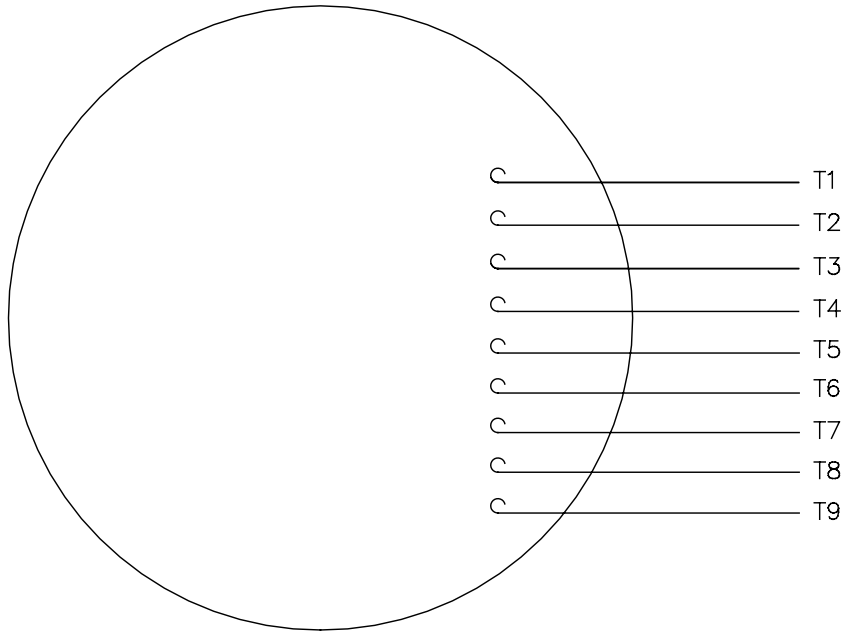




		TOLERANCES UNLESS SPECIFIED				DRAWN JJK 06/14/04		
		DEC INCHES				CHK		
		X ±.1				APPR		
		.XX ±.03		TITLE OUTLINE - 210TC FRAME		SCALE 3:8		
		.XXX ±.005		TEFC - RIGID "C"		REF OLG140675-00		
		.XXX ±.0005		MATL WASHGUARD ALL STAINLESS STEEL MOTOR		FMF		
				FINISH		PREV		
NO	REVISION	BY & DATE	CHK ANG ±1/2°	RFP	CAD FILE 037617	SIZE B	DRAWING NO 037617	REV
THIS DRAWING IN DESIGN AND DETAIL IS OUR PROPERTY AND MUST NOT BE USED EXCEPT IN CONNECTION WITH OUR WORK. ALL RIGHTS OF DESIGN AND INVENTION ARE RESERVED. THIS IS AN ELECTRONICALLY GENERATED DOCUMENT - DO NOT SCALE THIS PRINT								

005010-01

VIEW FROM OUTSIDE OF MOTOR AT SWITCH END.



VOLTAGE	L1	L2	L3	JOIN & INSULATE
HIGH	T1	T2	T3	(T4,T7) (T5,T8) (T6,T9)
LOW	T1,T7	T2,T8	T3,T9	T4,T5,T6

				TOLERANCES UNLESS SPECIFIED		<b>Regal Beloit America, Inc.</b>		DRAWN RDW 04/12/02				
				DEC.	INCHES			CHK				
				.X	±.1			APPD				
				.XX	±.01			SCALE 1=1				
				.XXX	±.005	TITLE		REF FIG.2-51				
A	UPDATED TO REGAL LOGO			SAJ	06/26/15	AJY	.XXXX	±.0005	MAT'L. DECAL - 004014	FMF		
NO.	REVISION			BY & DATE	CHK	ANG	±1/2"		FINISH	PREV		
THIS DRAWING IN DESIGN AND DETAIL IS OUR PROPERTY AND MUST NOT BE USED EXCEPT IN CONNECTION WITH OUR WORK ALL RIGHTS OF DESIGN AND INVENTION ARE RESERVED THIS IS AN ELECTRONICALLY GENERATED DOCUMENT - DO NOT SCALE THIS PRINT				RFP	04/12/02		CAD FILE	00501001		SIZE	DRAWING NO.	REV.
				DIST	BRF-NLV				A	005010-01		A

**CERTIFICATION DATA SHEET**

**P.O. BOX 8003  
 WAUSAU, WI 54401-8003  
 PH. 715-675-3311**

**CONN. DIAGRAM:** 005010.01

**MODEL #:** 213TTWDD6031 AA

**OUTLINE:** 037617-1200

**MOUNTING:** F1 ONLY

**WINDING #:** K2134279 R1 2

**TYPICAL MOTOR PERFORMANCE DATA**

HP	kW	SYNC. RPM	F.L. RPM	FRAME	ENCLOSURE	KVA CODE	DESIGN
7 1/2&5	5.60&3.70	1800	1765&1475	213TC	TEFC	H	B

PH	Hz	VOLTS	AMPS	START TYPE	DUTY	INSL	S.F.	AMB°C
3	60/50	230/460&190/380	19.6/9.8&16.6/8.3	LINE OR INVERTER	CONTINUOUS	F3	1.15/1.0	40

FULL LOAD EFF:	91.7&90.2	3/4 LOAD EFF:	91.6	1/2 LOAD EFF:	90.6	GTD. EFF		ELEC. TYPE	
FULL LOAD PF:	78.3&75.5	3/4 LOAD PF:	72.6	1/2 LOAD PF:	60.4	91		SQ CAGE INV RATED	

F.L. TORQUE	LOCKED ROTOR AMPS	L.R. TORQUE	B.D. TORQUE	F.L. RISE°C
22.3 LB-FT	135 / 67.5	52.9 LB-FT 238 %	75 LB-FT 338 %	55

SOUND PRESSURE @ 3 FT.	SOUND POWER	ROTOR WK^2	MAX. WK^2	SAFE STALL TIME	STARTS / HOUR	APPROX. MOTOR WGT
62 dBA	72 dBA	0.85 LB-FT^2	62 LB-FT^2	15 SEC.	2	140 LBS.

**\*\*\* SUPPLEMENTAL INFORMATION \*\*\***

DE BRACKET TYPE	ODE BRACKET TYPE	MOUNT TYPE	ORIENTATION	SEVERE DUTY	HAZARDOUS LOCATION	DRIP COVER	SCREENS	PAINT
C-FACE	STANDARD	RIGID	HORIZONTAL	FALSE	NONE	FALSE	NONE	NO PAINT

BEARINGS		GREASE	SHAFT TYPE	SPECIAL DE	SPECIAL ODE	SHAFT MATERIAL	FRAME MATERIAL
DE	ODE						
BALL	BALL	POLYREX EM	T	NONE	NONE	303 STAINLESS (C-501)	STAINLESS STEEL
6209	6207						

THERMO-PROTECTORS				THERMISTORS	CONTROL	SPACE HEATERS
THERMOSTATS	PROTECTORS	WDG RTDs	BRG RTDs			
NONE	NOT	NONE	NONE	NONE	FALSE	NONE VOLTS

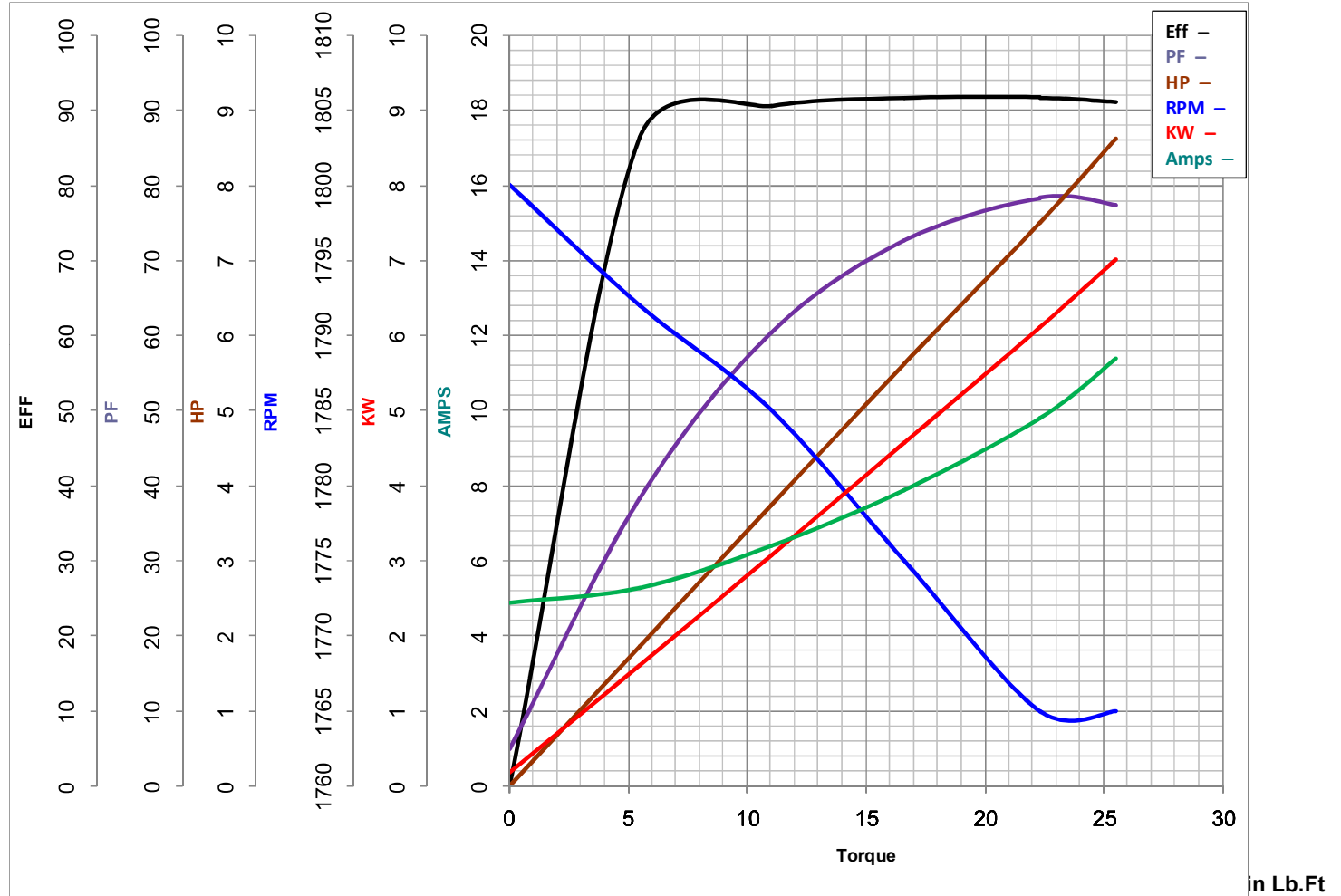
<p>*  N  O  T  E  S  *</p>	<p><b>INVERTER TORQUE:</b> CONSTANT 3:1  <b>INV. HP SPEED RANGE:</b> NONE</p> <hr/> <p><b>ENCODER:</b> NONE                  NONE NONE                  NONE NONE PPR</p> <hr/> <p><b>BRAKE:</b> NONE NONE                  NONE P/N NONE                  NONE NONE                  NONE FT-LB NONE V NONE Hz</p>
--	---

**PREPARED BY:** Radha Saikrishna Tanikella  
**DATE:** 11/01/2018 03:56:51 AM  
 FORM 3531 REV.3 02/07/99  
 \*\* Subject to change without notice.

**MARATHON ELECTRIC CORPORATION**

TYPICAL PERFORMANCE CURVE for AC MOTOR

Customer \_\_\_\_\_ Curve at 460 Volts HP 7.5&5 PHASE 3  
 Model No 213TTWDD6031 60 HZ  
7.5 HP VOLTS 230/460&190/380  
 Catalog No N408B HZ 60&50 RPM 1765&1475



FL TORQUE	<u>22.3</u>	Lb.Ft	FL AMPS	<u>19.6/9.8</u>
BD TORQUE	<u>75.0</u>	Lb.Ft	PU TORQUE	<u>49.0</u> Lb.Ft
LR TORQUE	<u>52.9</u>	Lb.Ft	LR AMPS	<u>67.5</u>
WINDING	K2134279-2		Date	11/5/2018