

# PRODUCT INFORMATION PACKET

**marathon®**  
Motors

Model No: 213TTWD6031

Catalog No: N408A

PowerWash™SXT-Plus Wash Down Duty™ General Purpose Motor, 7.50 & 5 HP, 3 Ph, 60 & 50 Hz,  
230/460 & 190/380 V, 1800 & 1500 RPM, 213TC Frame, TEFC



Regal and Marathon are trademarks of Regal Rexnord Corporation or one of its affiliated companies.

©2023 Regal Rexnord Corporation, All Rights Reserved. MC017097E

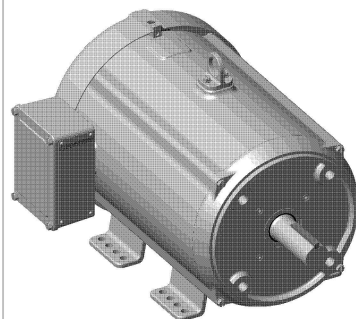
**RegalRexnord**

### Nameplate Specifications

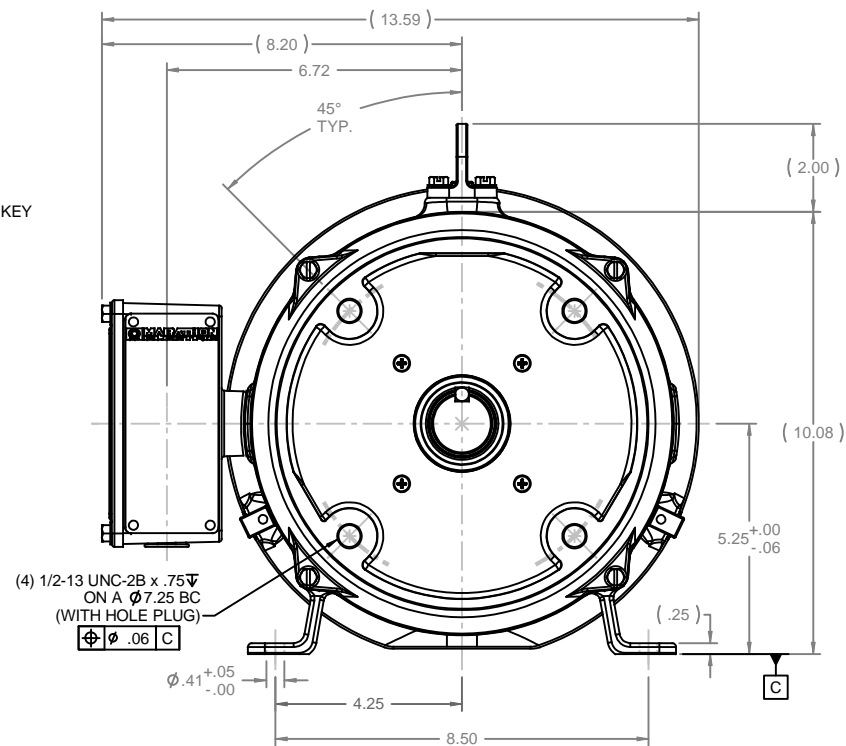
Phase	3	Output HP	7.50 & 5 Hp
Output KW	5.6 & 3.7 kW	Voltage	230/460 & 190/380 V
Speed	1765 & 1460 rpm	Service Factor	1.15 & 1.0
Frame	213TC	Enclosure	Totally Enclosed Fan Cooled
Thermal Protection	No Protection	Efficiency	91.7 %
Ambient Temperature	40 °C	Frequency	60 & 50 Hz
Current	21.6/10.8 & 24.8/12.4 A	Power Factor	72
Duty	Continuous	Insulation Class	F
Design Code	B	KVA Code	J
Drive End Bearing Size	6209	Opp Drive End Bearing Size	6207
UL	Recognized	CSA	Y
CE	Y	IP Code	55
Number of Speeds	1		


### Technical Specifications

Electrical Type	Squirrel Cage Inverter Rated	Starting Method	Line Or Inverter
Poles	4	Rotation	Reversible
Resistance Main	.88 Ohms	Mounting	Rigid Base
Motor Orientation	Horizontal	Drive End Bearing	Ball
Opp Drive End Bearing	Ball	Frame Material	Stainless Steel
Shaft Type	T	Overall Length	18.69 in
Shaft Diameter	1.375 in	Shaft Extension	3.13 in
Assembly/Box Mounting	F1 ONLY	Inverter Load	CONSTANT 3:1
Connection Drawing	005010.01ME	Outline Drawing	037617

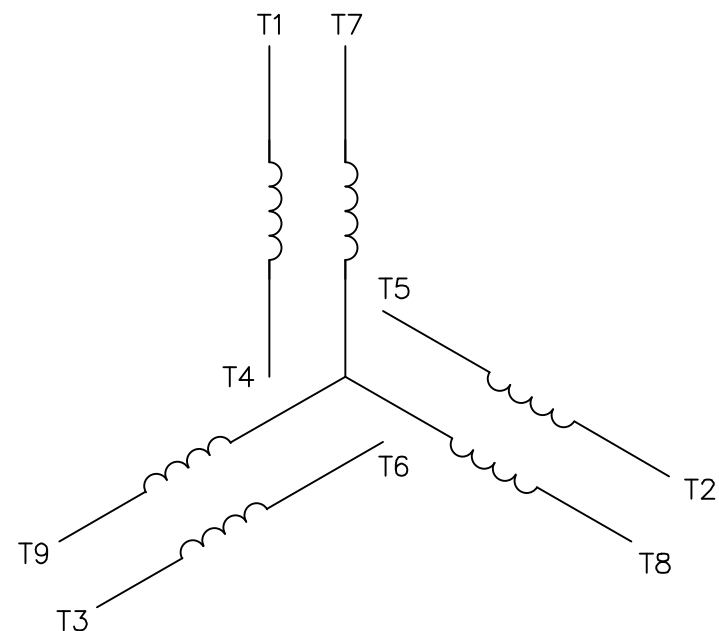
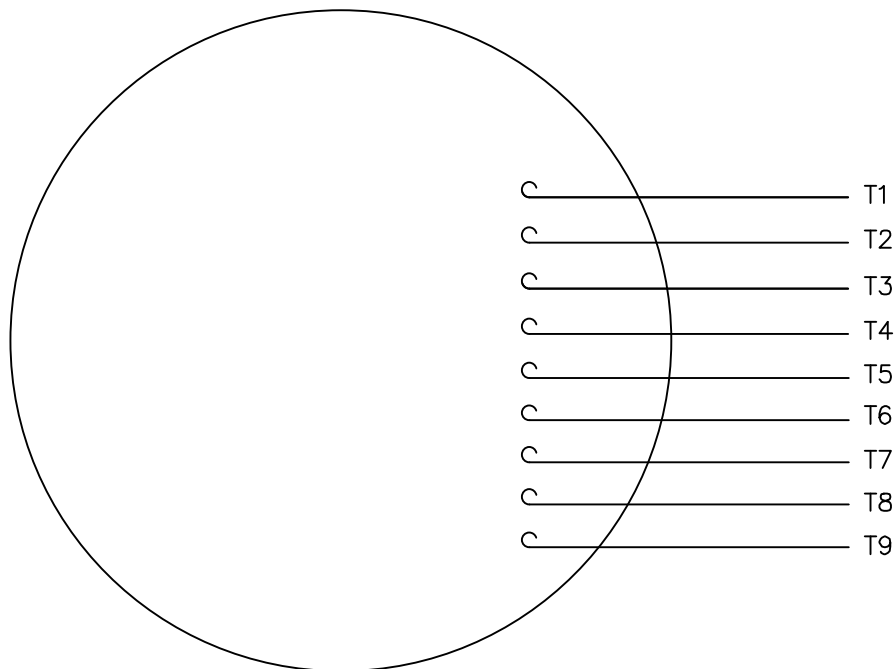


ISOMETRIC VIEW  
SCALE 1=6




				TOLERANCES UNLESS SPECIFIED		DRAWN JJK 06/14/04
			DEC INCHES	CHK		APPR
		.X ±.1				SCALE 3:8
		.XX ±.03		TITLE OUTLINE - 210TC FRAME		REF OLG140675-00
		.XXX ±.005		TEFC - RIGID "C"		FMF
		.XXXX ±.0005		MATL WASHGUARD ALL STAINLESS STEEL MOTOR		PREV
NO	REVISION	BY & DATE	CHK ANG ±1/2°	FINISH		
THIS DRAWING IN DESIGN AND DETAIL IS OUR PROPERTY AND MUST NOT BE USED EXCEPT IN CONNECTION WITH OUR WORK. ALL RIGHTS OF DESIGN AND INVENTION ARE RESERVED. THIS IS AN ELECTRONICALLY GENERATED DOCUMENT - DO NOT SCALE THIS PRINT.				RFP CAD FILE 037617	SIZE B	DRAWING NO 037617
			DIST			REV

VIEW FROM OUTSIDE OF MOTOR AT SWITCH END.



VOLTAGE	L1	L2	L3	JOIN & INSULATE
HIGH	T1	T2	T3	(T4,T7) (T5,T8) (T6,T9)
LOW	T1,T7	T2,T8	T3,T9	T4,T5,T6

				TOLERANCES UNLESS SPECIFIED				DRAWN RDW 04/12/02		
				DEC.	INCHES			CHK		
				.X	±.1			APPD		
				.XX	±.01	TITLE EXTERNAL WIRING DIAGRAM 3 PHASE W/O PROTECTOR		SCALE 1=1		
				.XXX	±.005			REF FIG.2-51		
				.XXXX	±.0005	MAT'L. DECAL - 004014		FMF		
NO.	REVISION	BY & DATE	CHK	ANG	±1/2"	FINISH		PREV		
THIS DRAWING IN DESIGN AND DETAIL IS OUR PROPERTY AND MUST NOT BE USED EXCEPT IN CONNECTION WITH OUR WORK ALL RIGHTS OF DESIGN AND INVENTION ARE RESERVED THIS IS AN ELECTRONICALLY GENERATED DOCUMENT - DO NOT SCALE THIS PRINT			RFP 04/12/02		CAD FILE 00501001ME		SIZE A	DRAWING NO. 005010-01ME		REV.
			DIST							

## CERTIFICATION DATA SHEET

Model#: 213TTWD6031 AA  
 CONN. DIAGRAM: 005010.01ME  
 OUTLINE: 037617

WINDING#: T9495 FR 3  
 ASSEMBLY: F1 ONLY

## TYPICAL MOTOR PERFORMANCE DATA

HP	KW	SYNC. RPM	F.L. RPM	FRAME	ENCLOSURE	KVA CODE	DESIGN
7 1/2&5	5.60&3.70	1800	1765&1460	213TC	TEFC	J	B

PH	Hz	VOLTS	FL AMPS	START TYPE	DUTY	INSL	S.F	AMB°C	ELEVATION
3	60/50	230/460#190/ 380	21.6/10.8&24. 8/12.4	LINE OR INVERTER	CONTINUOU S	F4	1.15/1.0	40	3300

FULL LOAD EFF: 91.7	3/4 LOAD EFF: 90.4	1/2 LOAD EFF: 88.4	GTD. EFF	ELEC. TYPE	NO LOAD AMPS
FULL LOAD PF: 72	3/4 LOAD PF: 64.8	1/2 LOAD PF: 52.5	90.2	SQ CAGE INV RATED	12 / 6

F.L. TORQUE	LOCKED ROTOR AMPS	L.R. TORQUE	B.D. TORQUE	F.L. RISE°C
22.3 LB-FT	146 / 73	50 LB-FT 225	64.2 LB-FT 289	0

SOUND PRESSURE @ 3 FT.	SOUND POWER	ROTOR WK^2	MAX. WK^2	SAFE STALL TIME	STARTS /HOUR	APPROX. MOTOR WGT
60 dBA	70 dBA	0.97 LB-FT^2	1 LB-FT^2	15 SEC.	2	0 LBS.

## \*\*\* SUPPLEMENTAL INFORMATION \*\*\*

DE BRACKET TYPE	ODE BRACKET TYPE	MOUNT TYPE	ORIENTATION	SEVERE DUTY	HAZARDOUS LOCATION	DRIP COVER	SCREENS	PAINT
C-FACE	STANDARD	RIGID	HORIZONTAL	FALSE	NONE	FALSE	NONE	NO PAINT

BEARINGS		GREASE	SHAFT TYPE	SPECIAL DE	SPECIAL ODE	SHAFT MATERIAL	FRAME MATERIAL
DE	OPE						
BALL	BALL						
6209	6207	POLYREX EM	T	NONE	NONE	303 STAINLESS (C-501)	STAINLESS STEEL

THERMO-PROTECTORS				THERMISTORS	CONTROL	SPACE /n HEATERS
THERMOSTATS	PROTECTORS	WDG RTDs	BRG RTDs			
NONE	NOT	NONE	NONE	NONE	FALSE	NONE VOLTS

If Inverter equals NONE, contact factory for further information

* N O T E S *	INVERTER TORQUE: CONSTANT 3:1					
	INV. HP SPEED RANGE: NONE					
	ENCODER: NONE					
	NONE NONE					
	NONE NONE PPR					
	BRAKE: NONE NONE					
	NONE P/N NONE					
	NONE NONE					
	- FT-LB	NONE V	NONE Hz			

DATE: 06/22/2017 06:51:31 AM

FORM 3531 REV.3 02/07/99

\*\* Subject to change without notice.

## Data Sheet

Date: 16-06-2017

Customer:

Attention:

Submitted by: FAREEDA DUDEKULA

213TTWD6031



Submittal

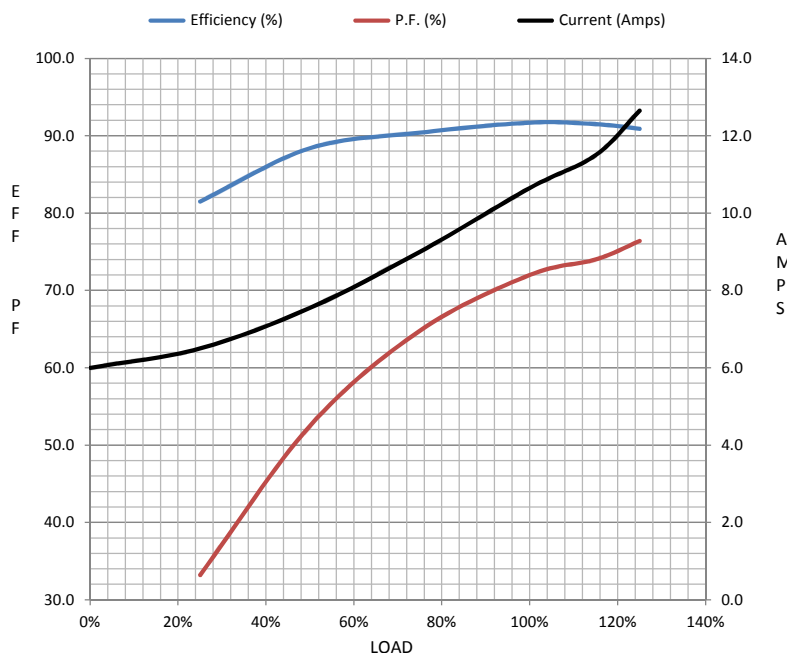
Data @ 460 V

## Motor Load Data

Load	0%	25%	50%	75%	100%	115%	125%	LR	
Current (Amps)	6.0	6.5	7.6	9.0	10.7	11.5	12.7	73.0	
Torque (ft-lb)	0.00	5.5	11.0	16.6	22.3	24.5	27.9	50.0	
RPM	1800	1794	1787	1780	1770	1,768	1765	0	
Efficiency (%)		81.5	88.4	90.4	91.7	91.5	90.9		
P.F. (%)	6.2	33.2	52.5	64.8	72.0	74.0	76.4	0.0	

## Motor Speed Data

	LR	Pull-Up	BD	Rated	Idle	Information Block	
Speed (RPM)	0	900	1700	1770	1800	HP	7.5
Current (Amps)	73.0	65.0	48.0	10.7	6.0	Sync. RPM	1800
Torque (ft-lb)	50.0	43.0	64.2	22.3	0.00	Frame	210



HP	7.5			
Sync. RPM	1800			
Frame	210			
Enclosure	TEFC			
Construction	TFW			
Voltage	230/460#190/38(V			
Frequency	60 Hz			
Design	B			
LR Code letter	J			
Service Factor	1.15			
Temp Rise @ FL	43 ° C			
Duty	CONT			
Ambient	40 ° C			
Elevation	1,000 feet			
Rotor/Shaft wk²	0.97 Lb-Ft²			
Ref Wdg	T9495 FR			
Sound Pressure @ 1M	60 dBA			
VFD Rating	CONSTANT 3:1			
Outline Dwg	037617			
Conn. Diag	005010.01ME			
Additional Specifications:				
0				
365THFS8036				
EQUIV CKT (OHMS / PHASE)				
R1	R2	X1	X2	Xm
0.0000	0.0000	0.0000	0.0000	0.0000

## Speed -Torque Curve

