

# PRODUCT INFORMATION PACKET



Model No: 213TTFW4024

Catalog No: U330

Close-Coupled Pump Motor, 7.50 & 5 HP, 3 Ph, 60 & 50 Hz, 230/460 & 190/380 V, 3600 & 3000 RPM,  
213JP Frame, TEFC

Regal and Marathon are trademarks of Regal Rexnord Corporation or one of its affiliated companies.

©2023 Regal Rexnord Corporation, All Rights Reserved. MC017097E

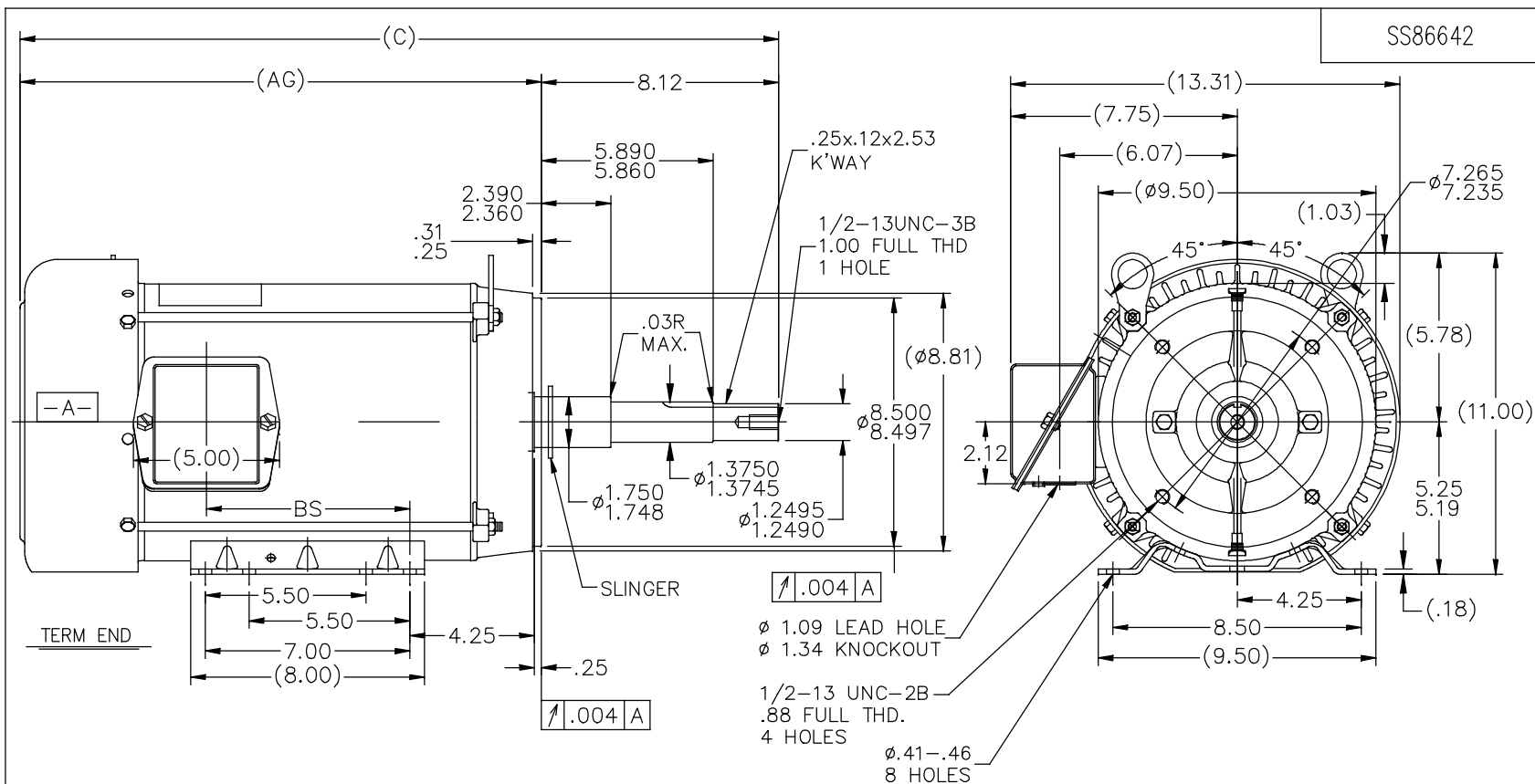


### Nameplate Specifications

Phase	3	Output HP	7.50 & 5 Hp
Output KW	5.6 & 3.7 kW	Voltage	230/460 & 190/380 V
Speed	3530 & 2940 rpm	Service Factor	1.15 & 1.15
Frame	213JP	Enclosure	Totally Enclosed Fan Cooled
Thermal Protection	No Protection	Efficiency	88.5 & 89.5 %
Ambient Temperature	40 °C	Frequency	60 & 50 Hz
Current	18.4/9.2 & 15/7.5 A	Power Factor	85.5
Duty	Continuous	Insulation Class	F
Design Code	B	KVA Code	G
Drive End Bearing Size	6309	Opp Drive End Bearing Size	6206
UL	Recognized	CSA	Y
CE	Y	IP Code	43
Number of Speeds	1		

### Technical Specifications


Electrical Type	Squirrel Cage Induction Run	Starting Method	Across The Line
Poles	2	Rotation	Reversible
Resistance Main	1.45 Ohms	Mounting	Rigid Base
Motor Orientation	Horizontal	Drive End Bearing	Ball
Opp Drive End Bearing	Ball	Frame Material	Rolled Steel
Shaft Type	JP	Overall Length	24.46 in
Frame Length	9.65 in	Shaft Diameter	1.250 in
Shaft Extension	8.15 in	Assembly/Box Mounting	F1/F2 CAPABLE
Outline Drawing	A-SS86642-965	Connection Drawing	A-EE7308



DASH	FR.	C	AG	BS	MOUNTING
965	213JP	24.46	16.34	5.43	
1115	213/15JP	25.96	17.84	6.93	
1240	213/15JP	27.21	19.09	8.18	F1 ONLY

NOTES:

1. NAMEPLATE TO BE READ FROM C'BOX SIDE OF MOTOR.
2. BOX CAN BE MOUNTED IN 90° STEPS.
3. BOX CAN BE MOUNTED ON OPPOSITE SIDE BY REMOVING BRACKETS AND TURNING FRAME 180°. (EXCEPT AS NOTED.)

7	UPDATED TO REGAL LOGO	MVG 11/01/2017	SR	TOLERANCES UNLESS SPECIFIED		 Regal Beloit America, Inc.	DRAWN	MH 11-01-1996	
6	UPDATED DRAWING	TJW 04/30/2007		DEC.	INCHES		CHK	ML 11-05-1996	
5	REDRAWN IN AUTOCAD	TAT 07-13-2004	ML	.X	±.1		APPD	DN 11-06-1996	
4	UPDATED C' BOX GEOMETRY CN 28425	DRS 01-31-2000		.XX	±.03		TITLE OUTLINE	SCALE	1=5
3	REVISED MOUNTING HOLES ON C' FACE WAS .75	MJD 06-18-1998		.XXX	±.005		210JP FR.-BB-TS-TEFC-R/S-C' FACE	REF	
	FULL THREAD CN 25600-210			.XXXX	±.0005	MAT'L	FMF		
NO.	REVISION	BY & DATE	CHK	ANG	±7°30"	FINISH	PREV		
THIS DRAWING IN DESIGN AND DETAIL IS OUR PROPERTY AND MUST NOT BE USED EXCEPT IN CONNECTION WITH OUR WORK ALL RIGHTS OF DESIGN AND INVENTION ARE RESERVED THIS IS AN ELECTRONICALLY GENERATED DOCUMENT - DO NOT SCALE THIS PRINT			RFP	CAD FILE ss86642			SIZE	DRAWING NO. PAGE OF REV.	
			DIST LB				A	SS86642 7	



NO.	REVISION	BY & DATE	CHK	ANG	TOLERANCES UNLESS SPECIFIED		DRAWN RM	ML	OF	REV.
					DEC.	INCHES				
5	CHG TO REGAL LOGO	SL 09/10/2015	AB				 <b>Regal</b> Beloit America, Inc.			
4	REVISED IEC NOTATIONS	MSG 11/15/2011	CMN	.X	±.1					
3	ADDED IEC NOTATIONS... (U1), (V1) ETC. MU95194	MSG 5/10/2010	MJS	.XX	±.02					
2	ADDED THE OPTIONAL CORD CONNECTION MU46318	RDH 04/24/2003	DRS	.XXX	±.005					
1	REDRAWN	RM 11/20/1990		.XXXX	±.0005					
							TITLE			
							3Ø - DUAL VOLTAGE MOTOR			
							MAT'L.			
							FINISH			
							CAD FILE ee7308			
							SIZE			
							A			
							DRAWING NO.			
							EE7308			
							PAGE			
							5			

THIS DRAWING IN DESIGN AND DETAIL IS OUR PROPERTY AND MUST NOT BE USED EXCEPT  
IN CONNECTION WITH OUR WORK ALL RIGHTS OF DESIGN AND INVENTION ARE RESERVED  
THIS IS AN ELECTRONICALLY GENERATED DOCUMENT - DO NOT SCALE THIS PRINT