

PRODUCT INFORMATION PACKET



Model No: 213TTFS4103

Catalog No: 213TTFS4103

2 HP, General Purpose Motors, 3 phase, 900 RPM, 230/460 V, 213TCV Frame, TEFC
General Purpose Motors

Regal and Marathon are trademarks of Regal Rexnord Corporation or one of its affiliated companies.
©2021 Regal Rexnord Corporation, All Rights Reserved. MC017097E



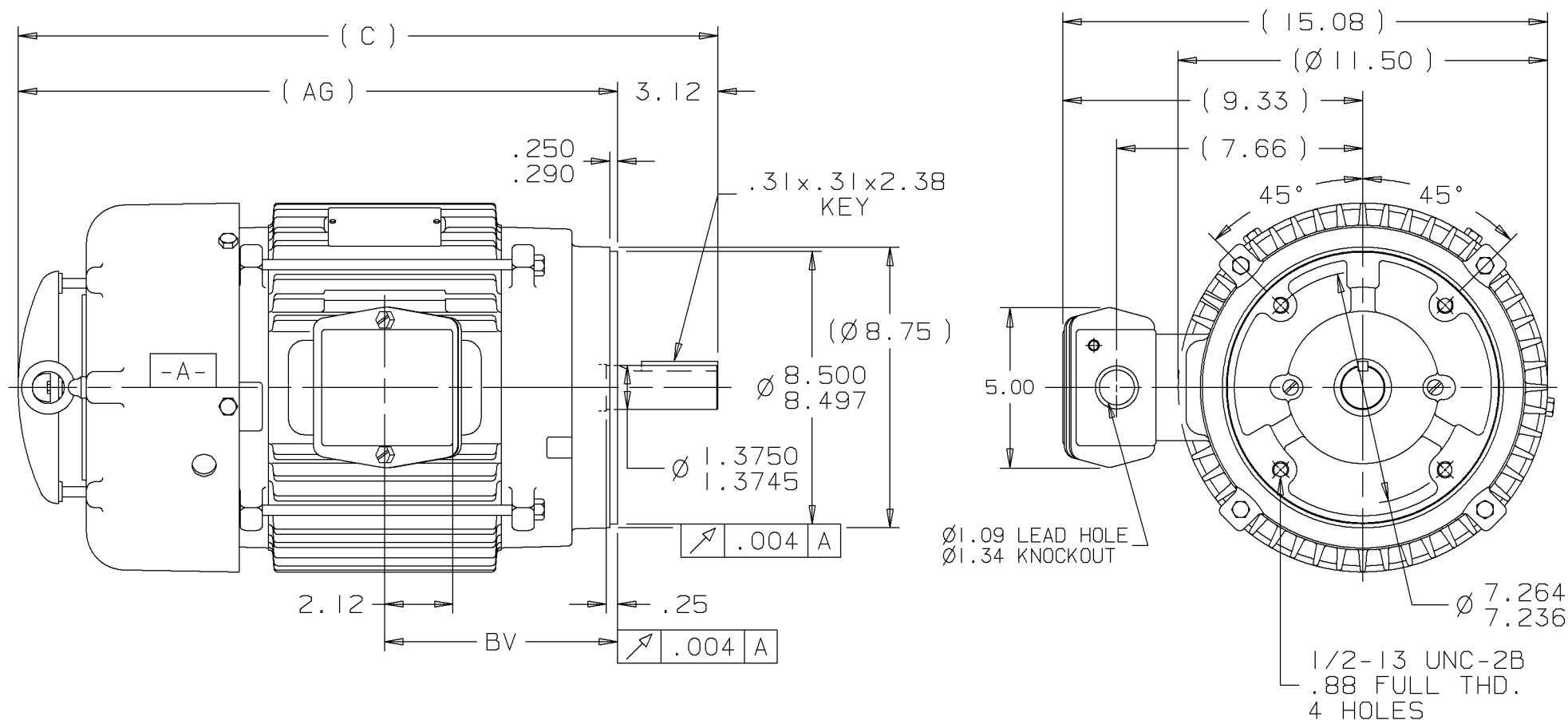
Nameplate Specifications

Output HP	2 Hp	Output KW	1.5 kW
Frequency	60 Hz	Voltage	230/460 V
Current	7.5/3.8 A	Speed	880 rpm
Service Factor	1.15	Phase	3
Efficiency	84 %	Power Factor	60.2
Duty	Continuous	Insulation Class	F
Design Code	B	KVA Code	J
Frame	213TCV	Enclosure	Totally Enclosed Fan Cooled
Thermal Protection	No	Ambient Temperature	40 °C
Drive End Bearing Size	6309	Opp Drive End Bearing Size	6206
UL	Recognized	CSA	Y
CE	N	IP Code	43
Number of Speeds	1		

Technical Specifications

Electrical Type	Squirrel Cage Induction Run	Starting Method	Across The Line
Poles	8	Rotation	Reversible
Resistance Main	4.6 Ohms	Mounting	Round
Motor Orientation	Shaft Down	Drive End Bearing	Ball
Opp Drive End Bearing	Ball	Frame Material	Cast Iron
Shaft Type	T	Assembly/Box Mounting	F1/F2 CAPABLE
Outline Drawing	A-SS84274-725	Connection Drawing	A-EE7308


This is an uncontrolled document once printed or downloaded and is subject to change without notice. Date Created:11/30/2021



DASH	FRAME	C	AG	BV
725	213TC	21.78	18.66	7.25
875	215TC	23.28	20.16	8.00

NOTE:

1. CONDUIT BOX CAN BE ROTATED IN 90° STEPS.
2. NAMEPLATE TO BE READ FROM CONDUIT BOX SIDE OF MOTOR.

				✓ MAX. SURFACE ROUGHNESS UNLESS NOTED OTHERWISE	UNLESS OTHERWISE SPECIFIED DIMENSIONS ARE IN INCHES TOL. ON XX± .03 XXX± .005 XXXX± .0005 ANGLES± 7°30"						
3	01-23-2001	UPDATED C*BOX GEOMETRY CN-28425	TJB	MATL SPEC	SHEET METAL C*BOX		DRAWN BY	MRB	11-11-1998		
				FINISH			CHKD BY	ML	11-11-1998		
							REFERENCE DRW.	WAUSAU, WISCONSIN 54401		APPD BY	GK
2	11-11-1998	REDRAWN ON CADD - REVISED LEAD HOLE WAS Ø1.09 L. HOLE MU22437	MRB	PART NAME OUTLINE 210TC FR. - TEFC - C*FACE					DRWG NO A - SS84274		
REV	DATE	CHANGE		NAME							
	L	SHOP BOOK	PURCHASED	DISTRIBUTION - WA - LB - WP - LM - BR			CADD FILE NO.	SS84274			

L SHOP BOOK

PURCHASED

DISTRIBUTION - WA - LB - WP - LM - BR

CADD FILE NO.

SS84274



				TOLERANCES UNLESS SPECIFIED		 Regal Beloit America, Inc.	DRAWN RM	11/20/1990
5	CHG TO REGAL LOGO	SL 09/10/2015	AB	DEC.	INCHES		CHK ML	11/21/1990
4	REVISED IEC NOTATIONS	MSG 11/15/2011	CMN	.X	±.1		APPD SAS	04/24/2003
3	ADDED IEC NOTATIONS... (U1), (V1) ETC. MU95194	MSG 5/10/2010	MJS	.XX	±.02		SCALE	1=1
2	ADDED THE OPTIONAL CORD CONNECTION MU46318	RDH 04/24/2003	DRS	.XXX	±.005	TITLE CONNECTION DIAGRAM 3ø – DUAL VOLTAGE MOTOR		REF
1	REDRAWN	RM 11/20/1990		.XXXX	±.0005	MAT'L.		FMF
NO.	REVISION	BY & DATE	CHK	ANG	±7"30"	FINISH		PREV
THIS DRAWING IN DESIGN AND DETAIL IS OUR PROPERTY AND MUST NOT BE USED EXCEPT IN CONNECTION WITH OUR WORK ALL RIGHTS OF DESIGN AND INVENTION ARE RESERVED THIS IS AN ELECTRONICALLY GENERATED DOCUMENT – DO NOT SCALE THIS PRINT			RFP		CAD FILE ee7308		SIZE	DRAWING NO. PAGE OF REV.
			DIST WP				A	EE7308

THIS DRAWING IN DESIGN AND DETAIL IS OUR PROPERTY AND MUST NOT BE USED EXCEPT
IN CONNECTION WITH OUR WORK ALL RIGHTS OF DESIGN AND INVENTION ARE RESERVED
THIS IS AN ELECTRONICALLY GENERATED DOCUMENT - DO NOT SCALE THIS PRINT