

PRODUCT INFORMATION PACKET

marathon®
Motors

Model No: 213TTFND6531

Catalog No: E476A

7.50 HP Severe Duty Motor, 3 phase, 1800 RPM, 230/460 V, 213T Frame, TEFC
Severe Duty Motors



Regal and Marathon are trademarks of Regal Rexnord Corporation or one of its affiliated companies.
©2021 Regal Rexnord Corporation, All Rights Reserved. MC017097E

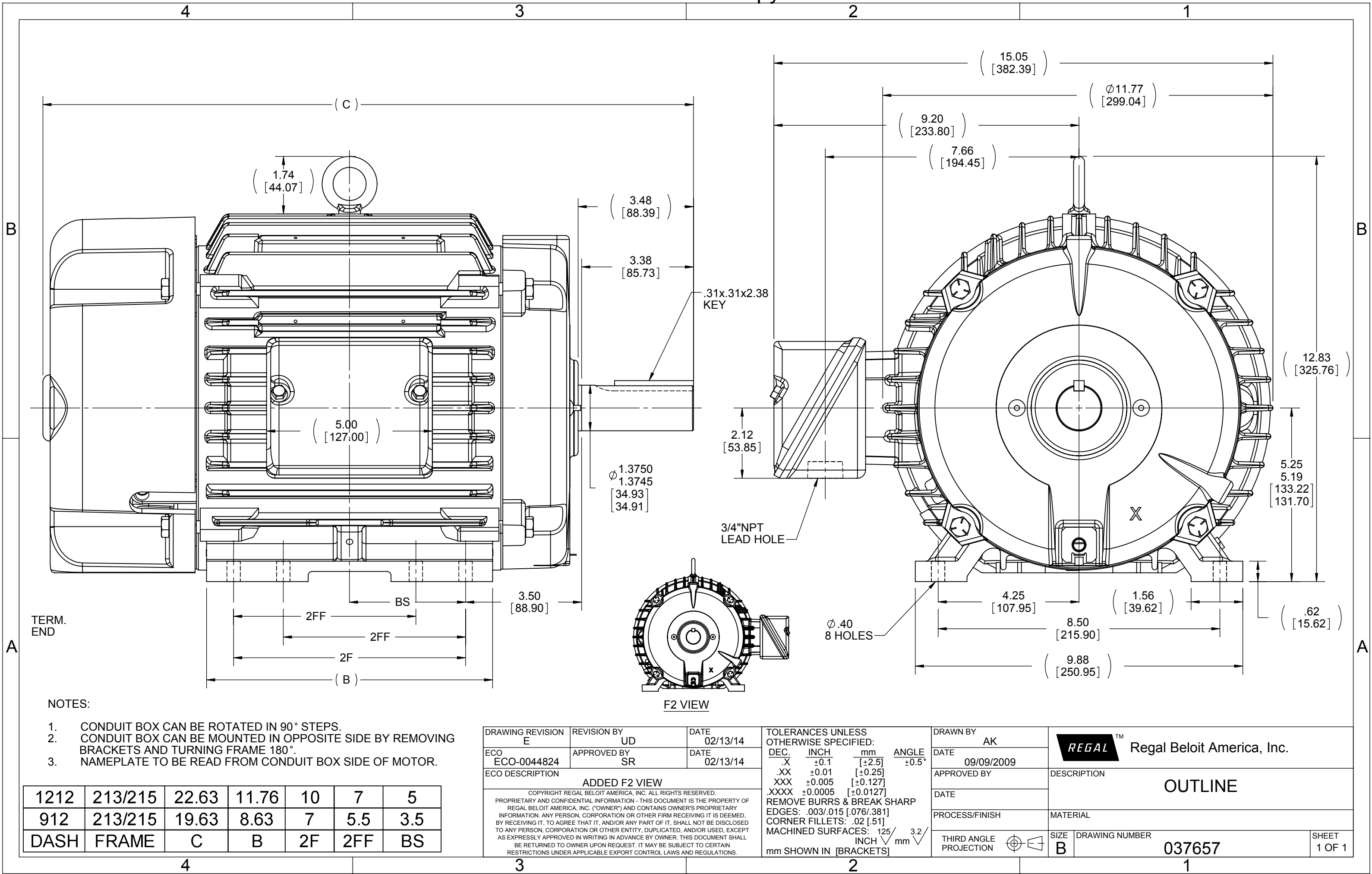
RegalRexnord

Nameplate Specifications

Output HP	7.50 Hp	Output KW	5.6 kW
Frequency	60 Hz	Voltage	230/460 V
Current	19.2/9.6 A	Speed	1765 rpm
Service Factor	1.15	Phase	3
Efficiency	91.7 %	Power Factor	79.2
Duty	Continuous	Insulation Class	F
Design Code	B	KVA Code	H
Frame	213T	Enclosure	Totally Enclosed Fan Cooled
Thermal Protection	No	Ambient Temperature	40 °C
Drive End Bearing Size	6307	Opp Drive End Bearing Size	6208
UL	Recognized	CSA	Y
CE	Y	IP Code	54
Number of Speeds	1		

Technical Specifications


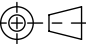
Electrical Type	Squirrel Cage Inverter Rated	Starting Method	Line Or Inverter
Poles	4	Rotation	Reversible
Resistance Main	1.18 Ohms	Mounting	Rigid Base
Motor Orientation	Horizontal	Drive End Bearing	Ball
Opp Drive End Bearing	Ball	Frame Material	Cast Iron
Shaft Type	T	Overall Length	19.63 in
Frame Length	9.12 in	Shaft Diameter	1.375 in
Shaft Extension	3.38 in	Assembly/Box Mounting	F1/F2 CAPABLE
Connection Drawing	A-EE7308	Outline Drawing	037657-912



1212	213/215	22.63	11.76	10	7	5
912	213/215	19.63	8.63	7	5.5	3.5
DASH	FRAME	C	B	2F	2FF	BS

DRAWING REVISION E	REVISION BY UD	DATE 02/13/14
ECO ECO-0044824	APPROVED BY SR	DATE 02/13/14
ECO DESCRIPTION ADDED F2 VIEW		
COPYRIGHT REGAL BELOIT AMERICA, INC. ALL RIGHTS RESERVED. PROPRIETARY AND CONFIDENTIAL INFORMATION - THIS DOCUMENT IS THE PROPERTY OF REGAL BELOIT AMERICA, INC. ("OWNER") AND CONTAINS OWNER'S PROPRIETARY INFORMATION. ANY PERSON, CORPORATION OR OTHER FIRM RECEIVING IT IS DEEMED, BY RECEIVING IT, TO AGREE THAT IT, AND/OR ANY PART OF IT, SHALL NOT BE DISCLOSED TO ANY PERSON, CORPORATION OR OTHER ENTITY, DUPLICATED, AND/OR USED, EXCEPT AS EXPRESSLY APPROVED IN WRITING IN ADVANCE BY OWNER. THIS DOCUMENT SHALL BE RETURNED TO OWNER UPON REQUEST. IT MAY BE SUBJECT TO CERTAIN RESTRICTIONS UNDER APPLICABLE EXPORT CONTROL LAWS AND REGULATIONS.		

TOLERANCES UNLESS OTHERWISE SPECIFIED:		
DEC.	INCH	mm
.X	±0.1	[±2.5]
.XX	±0.01	[±0.25]
.XXX	±0.005	[±0.127]
.XXXX	±0.0005	[±0.0127]
REMOVE BURRS & BREAK SHARP		
EDGES: .003/.015 [0.076/.381]		
CORNER FILLETS: .02 [51]		
MACHINED SURFACES: 125 INCH 3.2 mm		
mm SHOWN IN [BRACKETS]		

DRAWN BY AK	 Regal Beloit America, Inc.	
DATE 09/09/2009		
APPROVED BY	DESCRIPTION OUTLINE	
DATE		
PROCESS/FINISH	MATERIAL	
THIRD ANGLE PROJECTION 	SIZE B	DRAWING NUMBER 037657
		SHEET 1 OF 1



				TOLERANCES UNLESS SPECIFIED		 Regal Beloit America, Inc.	DRAWN RM 11/20/1990	
5	CHG TO REGAL LOGO	SL 09/10/2015	AB	DEC.	INCHES		CHK ML 11/21/1990	
4	REVISED IEC NOTATIONS	MSG 11/15/2011	CMN	.X	±.1	TITLE CONNECTION DIAGRAM 3Ø – DUAL VOLTAGE MOTOR MAT'L. FINISH	APPD SAS 04/24/2003	
3	ADDED IEC NOTATIONS... (U1), (V1) ETC. MU95194	MSG 5/10/2010	MJS	.XX	±.02		SCALE 1=1	
2	ADDED THE OPTIONAL CORD CONNECTION MU46318	RDH 04/24/2003	DRS	.XXX	±.005		REF	
1	REDRAWN	RM 11/20/1990		.XXXX	±.0005		FMF	
NO.	REVISION	BY & DATE	CHK	ANG	±7'30"	FINISH	PREV	
THIS DRAWING IN DESIGN AND DETAIL IS OUR PROPERTY AND MUST NOT BE USED EXCEPT IN CONNECTION WITH OUR WORK ALL RIGHTS OF DESIGN AND INVENTION ARE RESERVED THIS IS AN ELECTRONICALLY GENERATED DOCUMENT – DO NOT SCALE THIS PRINT			RFP	CAD FILE ee7308		SIZE A	DRAWING NO. EE7308	PAGE OF 5
			DIST WP					



P.O. BOX 8003
WAUSAU, WI 54401-8003
PH. 715-675-3311

DATA VOLTS: 460

CERTIFICATION DATA SHEET

CUSTOMER: _____ CUSTOMER P.O. #: _____
ORDER #: _____ REFERENCE MODEL #: 213TTFND6531
CONN. DIAGRAM: A-EE7308 CAT #: E475A
OUTLINE: 037657-912 CUSTOMER PART #: _____
WINDING: K2134279 NONE 2 MOUNTING: F1/F2 CAPABLE
SPEED: _____

TYPICAL MOTOR PERFORMANCE DATA

HP	KW	SYNC RPM	FL RPM	FRAME	ENCLOSURE	TYPE	KVA CODE	DESIGN
7.5	5.6	1800	1765	213T	TEFC	TFN	H	B

PH	HZ	VOLTS	AMPS	START TYPE	DUTY	INSL	S.F.	AMB	ELEV.
3	60	230/460	19.2/9.6	LINE OR INVERTER	CONT	F	1.15	40	3300

F.L. EFF	91.7	3/4 LD EFF	92.2	1/2 LD EFF	91.6	GTD EFF	91.0	ELECT. TYPE
F.L. PF	79.2	3/4 LD PF	72.9	1/2 LD PF	61.1			SQ CAGE INV RATED

F.L. TORQUE	LR AMPS @ 460 V	L.R. TORQUE	B.D. TORQUE	F.L. RISE (°C)
22.3 LB-FT	67.5	52.9 LB-FT 237%	75.0 LB-FT 336%	50

@ 3 FT.	POWER	ROTOR WK²	MAX. LOAD WK²	SAFE STALL TIME	STARTS/HOUR	MOTOR WGT
62 dBA	71 dBA	0.85 LB-FT²	45 LB-FT²	25 SEC.	2	140 LB.

*** SUPPLEMENTAL INFORMATION ***

DE BRACKET TYPE	ODE BRACKET TYPE	MOUNT TYPE	MOTOR ORIENTATION	SEVERE DUTY	HAZARDOUS LOCATION	DRIP COVER	SCREENS	PAINT
STANDARD	STANDARD	RIGID	HORIZONTAL	UM SEVERE	DIVISION 2 T2B	NO	NONE	BLUE (EPOXY)

BEARINGS	GREASE	SHAFT TYPE	SPECIAL DE	SPECIAL ODE	SHAFT MATERIAL	FRAME MATERIAL
DE ODE BALL BALL 6307 6208	POLYREX EM	T	NONE	NONE	1144 STRESSPROOF (C-223)	CAST IRON

THERMOSTATS	PROTECTORS	WDG RTD's	BRG RTD's	THERMISTORS	CONTROL	SPACE HEATERS
NONE	NOT	NONE	NONE	NONE	FALSE	NA

R1 (ohms/ph)	R2 (ohms/ph)	X1 (ohms/ph)	X2 (ohms/ph)	Xm (ohms/ph)	VIBRATION (in/sec)	FLOAT
0.76	1.108	2.458	3.173	50.414	0.080	ODE

* N O T E S *		INVERTER TORQUE: CONSTANT 20:1 INV. HP SPEED RANGE: 1.5 X BASE SPEED
	ENCODER: NONE NONE NONE	NONE PPR

PREPARED BY: FAREEDA DUDEKULA DATE: 9/12/2018	BRAKE: NONE NONE NONE	NONE NONE
	FT-LB: NA VOLTAGE: NONE	HZ:
FORM: 3531 REV_4 2/27/06	UL: V-INS, CONST UL REC	

Data Sheet

Date: 12/3/2018

Customer: _____

Attention: _____

Submitted by: FAREEDA DUDEKULA



213TTFND6531

Submittal

Data @ 460 V

Motor Load Data

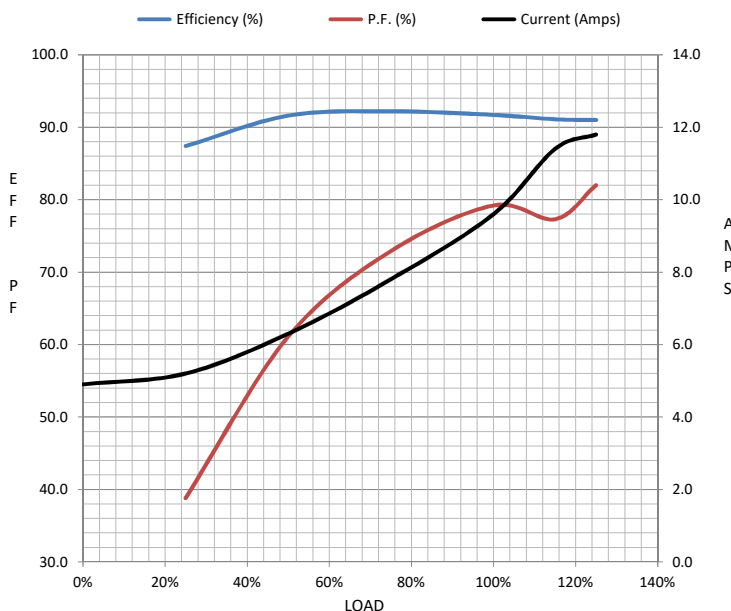
Load	0%	25%	50%	75%	100%	115%	125%	LR	
Current (Amps)	4.9	5.2	6.3	7.8	9.6	11.4	11.8	67.5	
Torque (ft-lb)	0.00	5.5	11.0	16.6	22.3	25.5	28.0	52.9	
RPM	1800	1792	1784	1775	1765	1,765	1756	0	
Efficiency (%)		87.4	91.6	92.2	91.7	91.1	91.0		
P.F. (%)	4.7	38.8	61.1	72.9	79.2	77.3	82.0	42.6	

Motor Speed Data

	LR	Pull-Up	BD	Rated	Idle
Speed (RPM)	0	900	1600	1765	1800
Current (Amps)	67.5	57.0	41.0	9.6	4.9
Torque (ft-lb)	52.9	49.0	75.0	22.3	0.00

Information Block

HP	7.5			
Sync. RPM	1800			
Frame	213			
Enclosure	TEFC			
Construction	TFS			
Voltage	230/460	V		
Frequency	60	Hz		
Design	A			
LR Code letter	H			
Service Factor	1.15			
Temp Rise @ FL	50	° C		
Duty	CONT			
Ambient	40	° C		
Elevation	1,000	feet		
Rotor/Shaft wk²	0.85	Lb-Ft²		
Ref Wdg	K2134279 NONE			
Sound Pressure @ 1M	62	dBA		
VFD Rating	CONSTANT 20:1			
Outline Dwg	037657-912			
Conn. Diag	A-EE7308			
Additional Specifications:				
0				
0				
EQUIV CKT (OHMS / PHASE)				
R1	R2	X1	X2	Xm
0.7600	1.1080	2.4580	3.1730	50.4140



Speed -Torque Curve

