

PRODUCT INFORMATION PACKET

marathon®
Motors

Model No: 213TTFCD7238

Catalog No: Y381A

Multispeed Motor, 5 & 1.25 HP, 3 Ph, 60 & 60 Hz, 460 & 460 V, 1800 & 1800 RPM, 213T Frame, TEFC



Regal and Marathon are trademarks of Regal Rexnord Corporation or one of its affiliated companies.

©2023 Regal Rexnord Corporation, All Rights Reserved. MC017097E

RegalRexnord

Nameplate Specifications

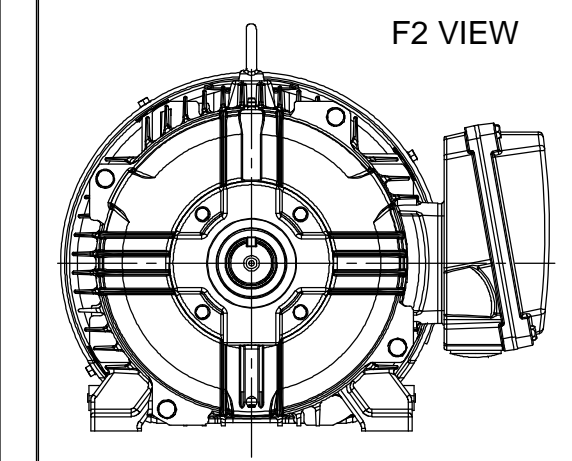
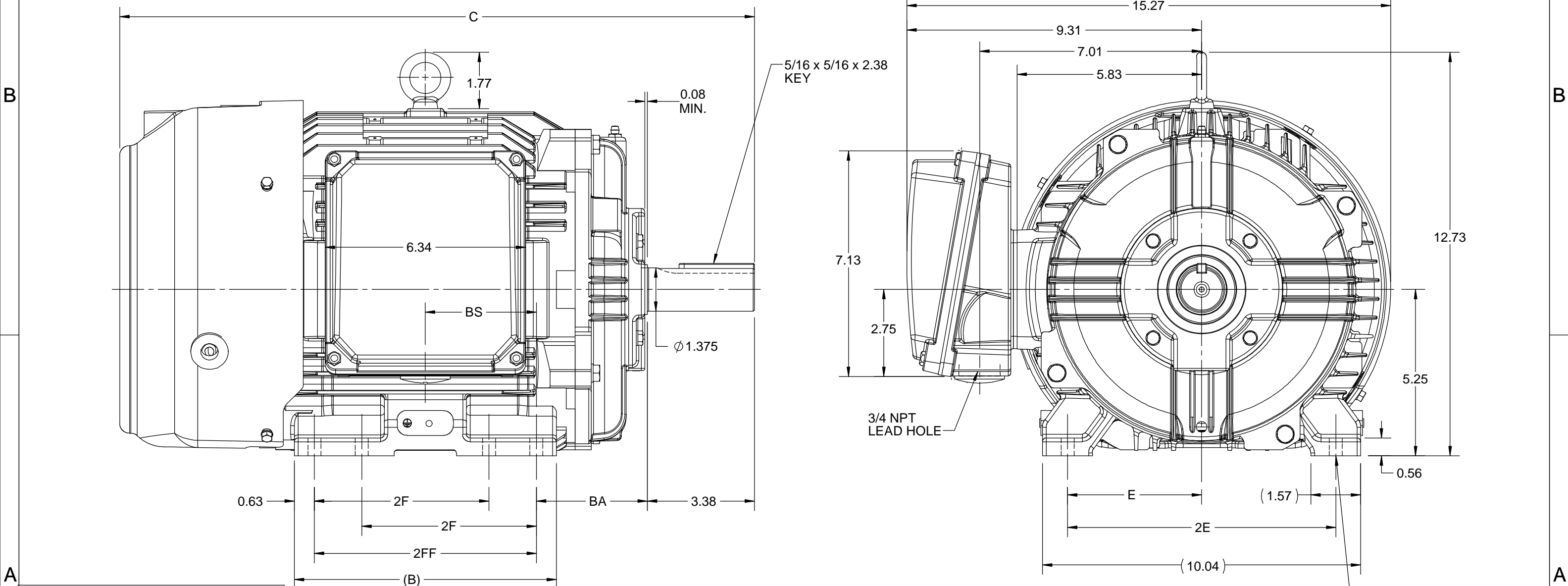
Phase	3	Output HP	5 & 1.25 Hp
Output KW	3.7 & 0.93 kW	Voltage	460 & 460 V
Speed	1775 & 882 rpm	Service Factor	1.15 & 1.15
Frame	213T	Enclosure	Totally Enclosed Fan Cooled
Thermal Protection	No Protection	Efficiency	89.5 & 83.5 %
Ambient Temperature	40 °C	Frequency	60 & 60 Hz
Current	6.2 & 2.5 A	Power Factor	82
Duty	Continuous	Insulation Class	H
Design Code	1VT	KVA Code	K
Drive End Bearing Size	6308	Opp Drive End Bearing Size	6208
UL	Recognized	CSA	Y
CE	Y	IP Code	55
Number of Speeds	2		


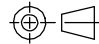
Technical Specifications

Electrical Type	Squirrel Cage Induction Run	Starting Method	Across The Line
Poles	4/8	Rotation	Reversible
Resistance Main	2.011 Ohms	Mounting	Rigid Base
Motor Orientation	Horizontal	Drive End Bearing	Ball
Opp Drive End Bearing	Ball	Frame Material	Cast Iron
Shaft Type	T	Shaft Diameter	1.375 in
Assembly/Box Mounting	F1/F2 CAPABLE		
Connection Drawing	EE7322	Outline Drawing	SS810116-100

This is an uncontrolled document once printed or downloaded and is subject to change without notice. Date Created:06/23/2023

4					3					2					1				
DASH NO.	B	C	E	2E	2F	2FF	BA	BS	MOUNTING	FRAME									
100	6.76	18.53	4.25	8.50	---	5.50	3.50	2.75	F1 OR F2	213T									
200	8.26	20.03			5.50	7.00		3.50		213/215T									

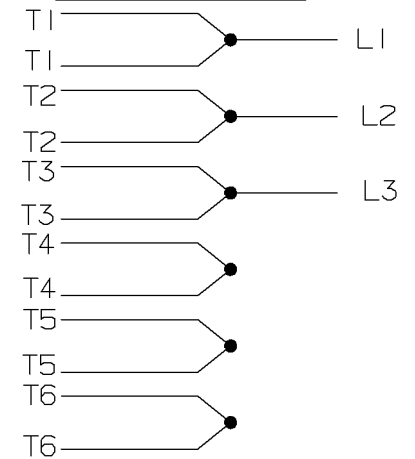


DRAWING REVISION D		REVISION BY VS		REV DATE/© DATE 28-09-2020		PRIMARY DIMENSIONS ARE INCH mm DIMENSIONS IN [BRACKETS] ARE FOR REFERENCE ONLY	DRAWN BY BISWA		<div> Regal Beloit America, Inc.</div>			
ECO ECO-0194527		APPROVED BY GNK		DATE 28-09-2020			DATE 24/12/2018					
ECO DESCRIPTION							APPROVED BY SBD		DESCRIPTION <div>OUTLINE</div> 213/215T FR NEMA- SD & IEEE841			
DRAWING UPDATED COPYRIGHT (PER REVISION DATE) REGAL BELOIT AMERICA, INC. ALL RIGHTS RESERVED. PROPRIETARY AND CONFIDENTIAL INFORMATION - THIS DOCUMENT IS THE PROPERTY OF REGAL BELOIT AMERICA, INC. ("OWNER") AND CONTAINS OWNER'S PROPRIETARY INFORMATION. ANY PERSON, CORPORATION OR OTHER FIRM RECEIVING IT IS DEEMED, BY RECEIVING IT, TO AGREE THAT IT, AND/OR ANY PART OF IT, SHALL NOT BE DISCLOSED TO ANY PERSON, CORPORATION OR OTHER ENTITY, DUPLICATED, AND/OR USED, EXCEPT AS EXPRESSLY APPROVED IN WRITING IN ADVANCE BY OWNER. THIS DOCUMENT SHALL BE RETURNED TO OWNER UPON REQUEST. IT MAY BE SUBJECT TO CERTAIN RESTRICTIONS UNDER APPLICABLE EXPORT CONTROL LAWS AND REGULATIONS.							DATE 24/12/2018					
							REFERENCE		MATERIAL		PROCESS/FINISH	
							THIRD ANGLE PROJECTION 		SIZE B	DRAWING NUMBER SS810116		SHEET 1 OF 1

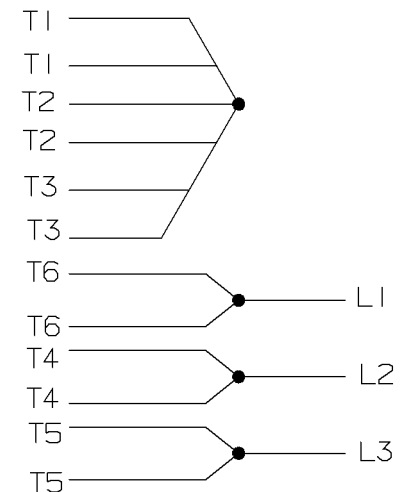
A- EE7322

FOR DUAL LEADS

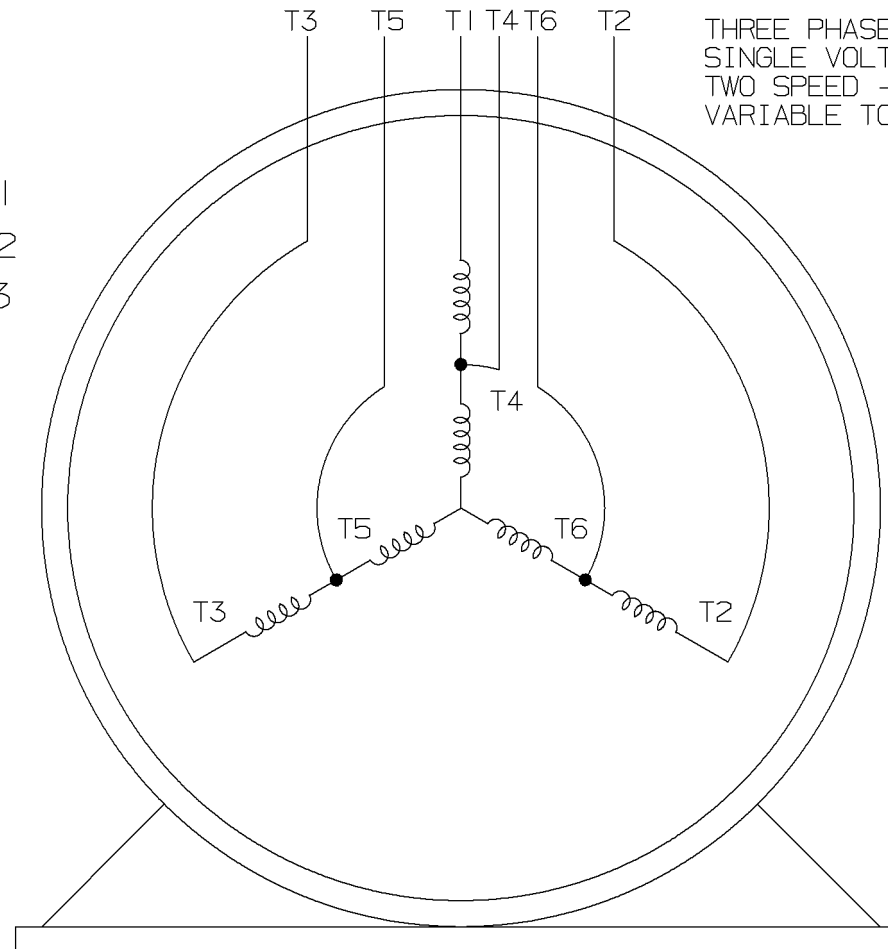
LOW SPEED



HIGH SPEED

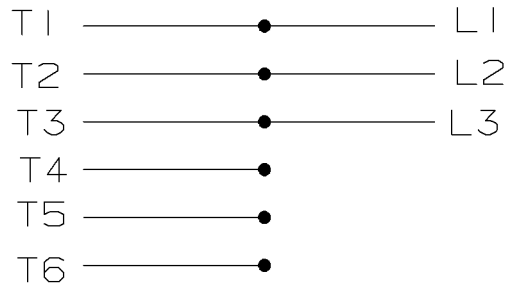


THREE PHASE MOTOR
SINGLE VOLTAGE
TWO SPEED - SGL. WDG.
VARIABLE TORQUE

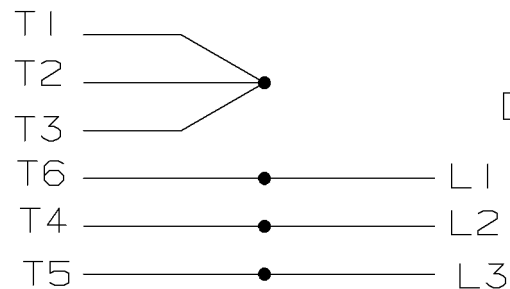


VIEW OF TERMINAL END

LOW SPEED




HIGH SPEED



T612C

T48B

				✓ MAX. SURFACE ROUGHNESS UNLESS NOTED OTHERWISE	UNLESS OTHERWISE SPECIFIED DIMENSIONS ARE IN INCHES TOL. ON XX± XXX± .005 XXXX± .0005 ANGLES±					
				MATL SPEC				DRAWN BY PGK	12-26-1996	
								CHKD BY ML	01-07-1997	
				FINISH						
7	01-08-1997	REDRAWN ON CADD		PGK	REFERENCE DRW.	WAUSAU, WISCONSIN 54401			APPD BY TB	01-07-1997

SHOP BOOK

PURCHASED

DISTRIBUTION - WA - LB - WP - LM - BR

CADD FILE NO.

EE7322

Data Sheet

Date: 12/14/2021
 Customer: _____
 Attention: _____
 Submitted by: SHERYL KUEHMICHEL



213TTFCD7238

Submittal

Data @ 460 V

Motor Load Data

Load	0%	25%	50%	75%	100%	115%	125%	LR	
Current (Amps)	2.70	3.1	4.0	5.0	6.2	7.0	7.6	55.0	
Torque(ft-lb)	0.00	3.6	7.4	11.0	14.8	17.0	18.5	40.0	
RPM	1800	1795	1788	1782	1775	1,770	1768	0	
Efficiency (%)		80.5	87.4	89.2	89.5	89.3	89.0		
P.F. (%)	9.5	47.0	68.5	79.0	82.0	84.0	84.5	45	

Motor Speed Data

	LR	Pull-Up	BD	Rated	Idle
Speed (RPM)	0	888	1600	1775	1800
Current (Amps)	55.0	49.5	28.5	6.2	2.70
Torque(ft-lb)	40.0	34.0	48.0	14.8	0.00

Information Block

HP	5.0
Sync. RPM	1800
Frame	213T
Enclosure	TEFC
Construction	TFC
Voltage	460 V
Frequency	60 Hz
Design	1VT
LR Code letter	K
Service Factor	1.15
Temp Rise @ FL	50 °C
Duty	CONT
Ambient	40 °C
Elevation	3,300 feet
Rotor/Shaft wk ²	0.00 Lb-Ft ²
Ref Wdg	HA3132(4-8)18 HS
Sound Pressure @ 1M	62 dBA
VFD Rating	NA
Outline Dwg	SS810116-100
Conn. Diag	EE7322

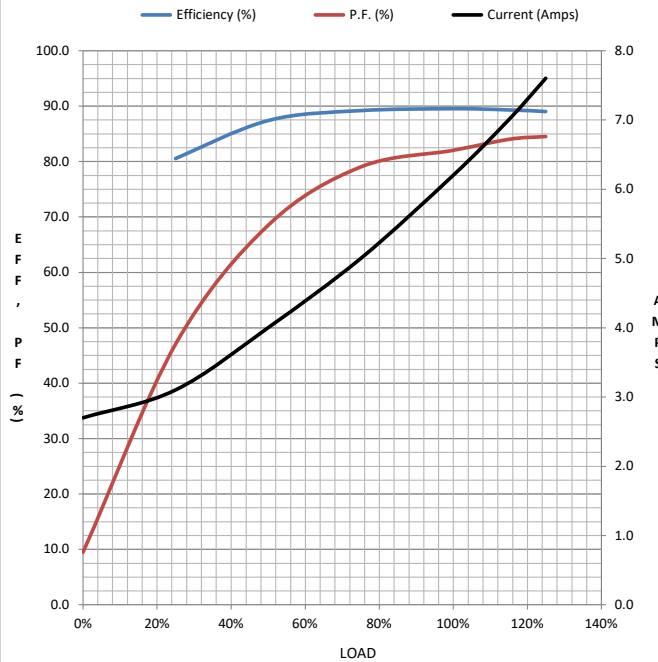
Additional Specifications:

CATALOG # Y381A

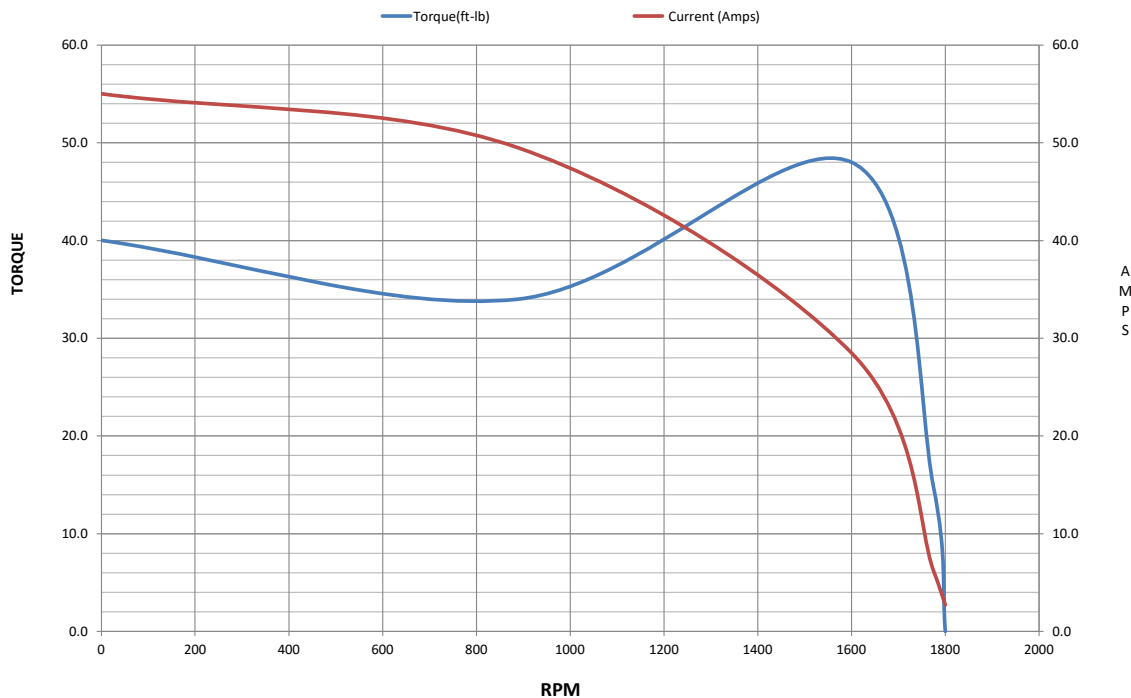
HIGH SPEED PERFORMANCE

EQUIV CKT (OHMS / PHASE)

R1	R2	X1	X2	Xm
1.2592	0.6182	3.4542	4.2540	95.3463



Speed -Torque Curve



Data Sheet

Date: 12/14/2021
 Customer: _____
 Attention: _____
 Submitted by: SHERYL KUEHMICHEL



213TTFCD7238

Submittal

Data @ 460 V

Motor Load Data

Load	0%	25%	50%	75%	100%	115%	125%	LR	
Current (Amps)	1.80	1.90	2.00	2.20	2.50	2.70	2.80	9.0	
Torque(ft-lb)	0.00	1.84	3.7	5.6	7.5	8.6	9.4	9.0	
RPM	900	895	892	885	882	878	875	0	
Efficiency (%)		66.0	78.0	82.0	83.5	83.7	83.7		
P.F. (%)	7.0	23.0	36.0	47.0	55.0	59.0	61.0	28	

Motor Speed Data

	LR	Pull-Up	BD	Rated	Idle
Speed (RPM)	0	441	820	882	900
Current (Amps)	9.0	8.1	5.5	2.50	1.80
Torque(ft-lb)	9.0	7.7	16.5	7.5	0.00

Information Block

HP	1.25
Sync. RPM	900
Frame	213T
Enclosure	TEFC
Construction	TFC
Voltage	460 V
Frequency	60 Hz
Design	1VT
LR Code letter	F
Service Factor	1.15
Temp Rise @ FL	50 °C
Duty	CONT
Ambient	40 °C
Elevation	3,300 feet
Rotor/Shaft wk ²	0.00 Lb-Ft ²
Ref Wdg	HA3132(4-8)18 HS
Sound Pressure @ 1M	58 dBA
VFD Rating	NA
Outline Dwg	SS810116-100
Conn. Diag	EE7322

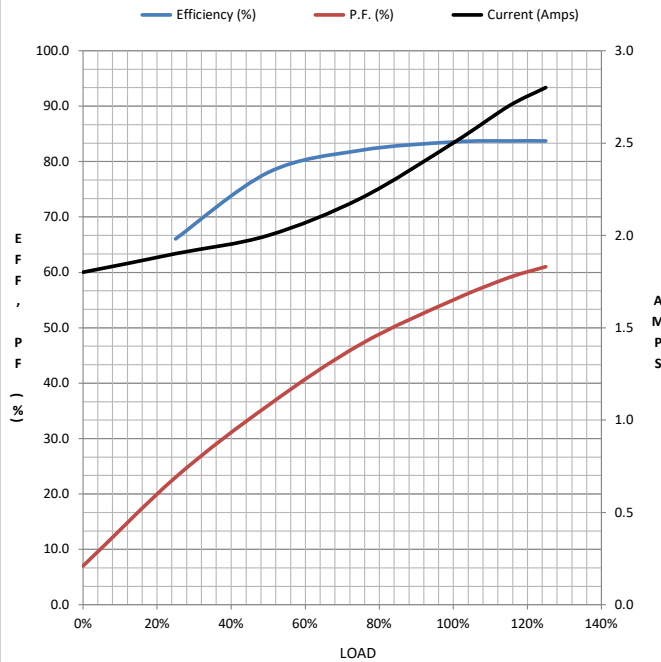
Additional Specifications:

CATALOG # Y381A

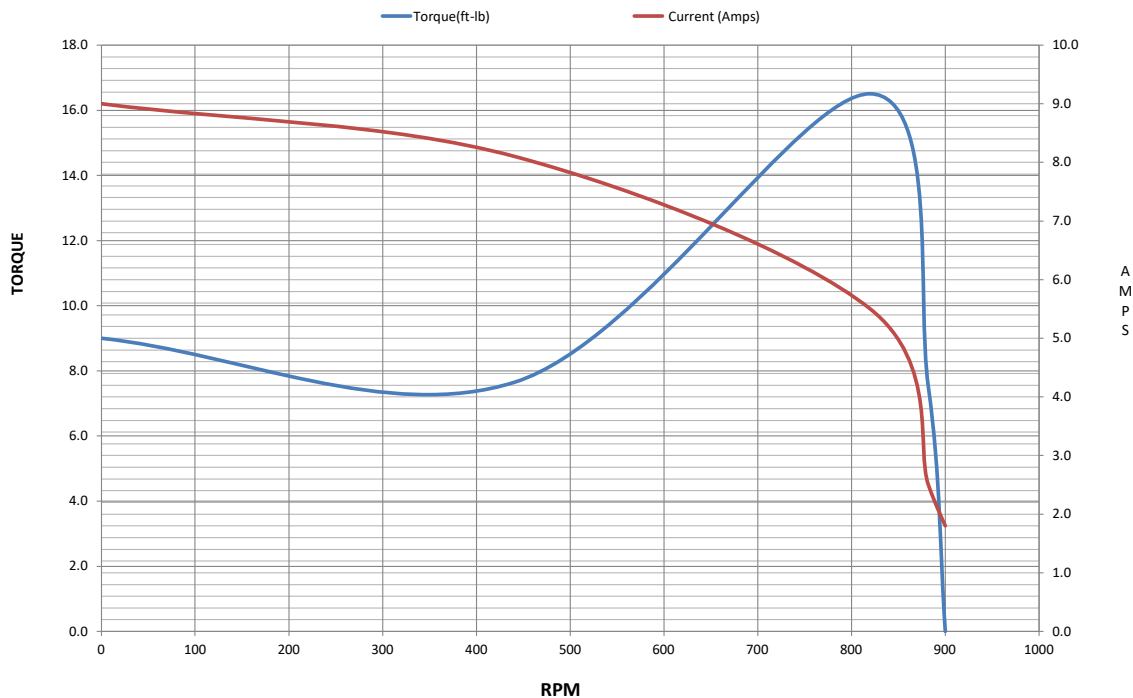
LOW SPEED PERFORMANCE

EQUIV CKT (OHMS / PHASE)

R1	R2	X1	X2	Xm
5.0376	2.9045	14.5227	22.0109	128.2081



Speed -Torque Curve



EC Declaration of Conformity

The undersigned representing
the manufacturer:

Regal Beloit America
100 East Randolph St.
Wausau, WI 54401

and the authorized representative
established within the Community:

Marathon Electric UK
6F Thistleton Road Ind. Estate
Market Overton
Oakham, Rutland LE15 7PP UK

are committed to providing customers with products that comply with applicable regulations and international protocols to which they are subject, including the requirements of the European Parliament Directive on the Harmonization of the laws relating to electrical equipment designed for use within certain voltage limits (2014/35/EU).

Regal Beloit America declares that the following product(s), to which this declaration relates, are in conformity with the relevant sections of the EC standards listed below.

This statement supersedes any statements previously issued pertaining to the product(s) listed below and is subject to change without notice.

Model No : 213TTFCD7238

(Model No. may contain prefix and/or suffix characters)

Catalog No : Y381A

Rework No : N/A

Directives :

Low Voltage Directive 2014/35/EU

Harmonized Standards Used :

EN 60034-1: 2010 (IEC 60034-1: 2010)

EN 60034-5: 2001/A1:2007 (IEC 60034-5: 2000/A1:2006)

Authorized Representative:



Michael A. Logsdon
Vice President, Technology

Authorized Representative in the Community:



Julian Clark
Marketing Engineer

Created on 09/01/2022

CE 22