

PRODUCT INFORMATION PACKET



Model No: 213TTFCD6588

Catalog No: E031

XRI®-SD Severe Duty Motor, 3 HP, 3 Ph, 60 Hz, 230/460 V, 1200 RPM, 213TC Frame, TEFC

Regal and Marathon are trademarks of Regal Rexnord Corporation or one of its affiliated companies.
©2022 Regal Rexnord Corporation, All Rights Reserved. MC017097E



Nameplate Specifications

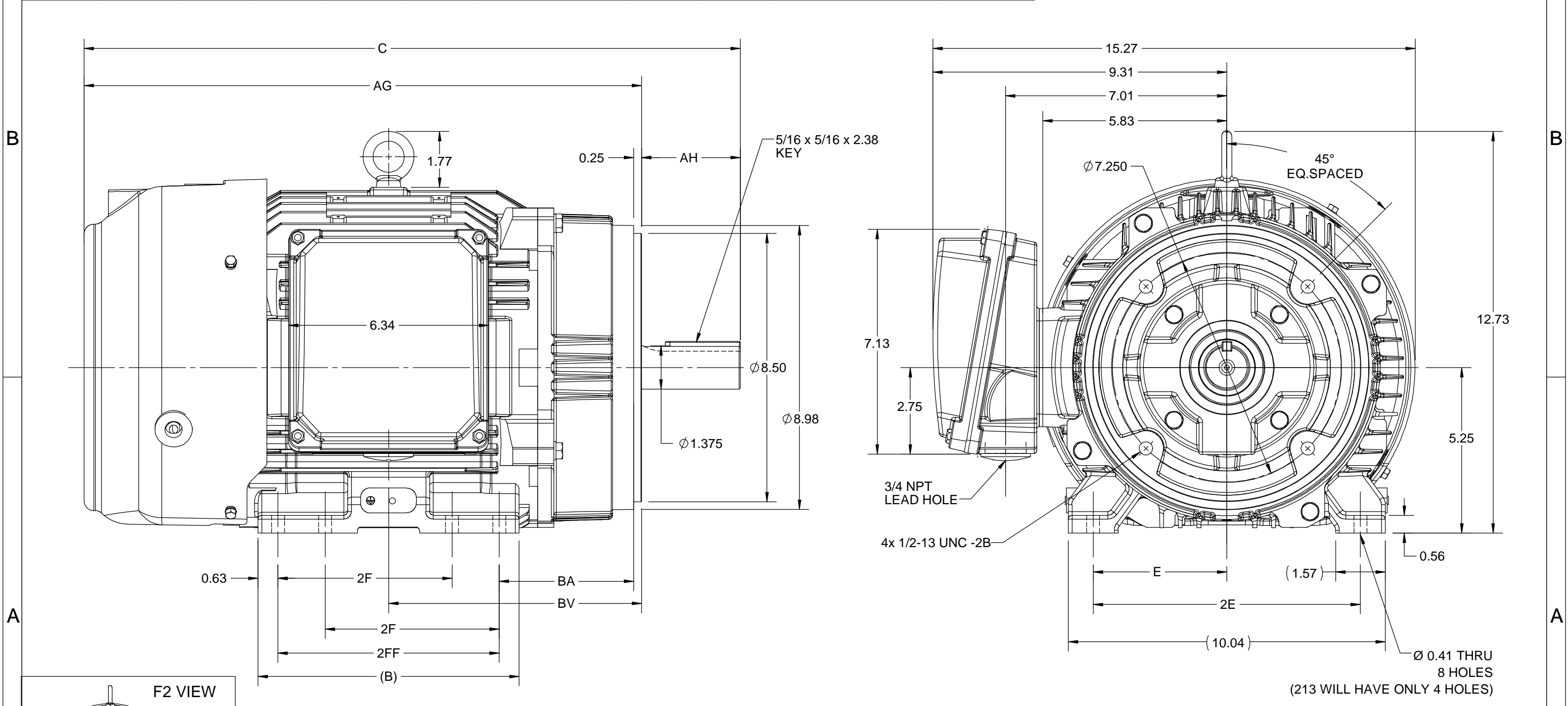
| | | | |
|------------------------|----------------|----------------------------|-----------------------------|
| Output HP | 3 Hp | Output KW | 2.2 kW |
| Frequency | 60 Hz | Voltage | 230/460 V |
| Current | 8.6/4.3 A | Speed | 1185 rpm |
| Service Factor | 1.15 | Phase | 3 |
| Efficiency | 89.5 % | Power Factor | 73 |
| Duty | Continuous | Insulation Class | H |
| Design Code | A | KVA Code | L |
| Frame | 213TC | Enclosure | Totally Enclosed Fan Cooled |
| Thermal Protection | No Protection | Ambient Temperature | 40 °C |
| Drive End Bearing Size | 6309 | Opp Drive End Bearing Size | 6208 |
| UL | Listed | CSA | Y |
| CE | Y | IP Code | 55 |
| Hazardous Location | DIVISION 2 T2B | Number of Speeds | 1 |

Technical Specifications

| | | | |
|-----------------------|------------------------------|-------------------|-----------------------------|
| Electrical Type | Squirrel Cage Inverter Rated | Starting Method | Line Or Inverter |
| Poles | 6 | Rotation | Reversible |
| Resistance Main | 3.486 Ohms | Mounting | Rigid Base |
| Motor Orientation | Horizontal | Drive End Bearing | Ball |
| Opp Drive End Bearing | Ball | Frame Material | Cast Iron |
| Shaft Type | T | Shaft Diameter | 1.375 in |
| Assembly/Box Mounting | F1/F2 CAPABLE | Inverter Load | CONSTANT 10:1/VARIABLE 10:1 |
| Connection Drawing | EE7308 | Outline Drawing | SS810125-100 |


This is an uncontrolled document once printed or downloaded and is subject to change without notice. Date Created:11/29/2022

| 4 | | | | 3 | | | | 2 | | | | 1 |
|----------|------|-------|------|------|------|------|-------|------|------|------|----------|-----------|
| DASH NO. | B | C | E | 2E | 2F | 2FF | AG | AH | BA | BV | MOUNTING | FRAME |
| 100 | 6.76 | 19.28 | 4.25 | 8.50 | --- | 5.50 | 16.15 | 3.12 | 4.25 | 7.26 | F1 OR F2 | 213TC |
| 200 | 8.26 | 20.78 | | | 5.50 | 7.00 | 17.65 | | | 8.00 | | 213/215TC |



| | | |
|--|--------------------|-------------------------------|
| DRAWING REVISION B | REVISION BY VS | REV DATE/© DATE 22-09-2020 |
| ECO ECO-0192056 | APPROVED BY GNK | DATE 22-09-2020 |
| DRAWING UPDATED | | |
| COPYRIGHT (PER REVISION DATE) REGAL BELOIT AMERICA, INC. ALL RIGHTS RESERVED. PROPRIETARY AND CONFIDENTIAL INFORMATION - THIS DOCUMENT IS THE PROPERTY OF REGAL BELOIT AMERICA, INC. ("OWNER") AND CONTAINS OWNER'S PROPRIETARY INFORMATION. ANY PERSON, CORPORATION OR OTHER FIRM RECEIVING IT IS DEEMED, BY RECEIVING IT, TO AGREE THAT IT, AND/OR ANY PART OF IT, SHALL NOT BE DISCLOSED TO ANY PERSON, CORPORATION OR OTHER ENTITY, DUPLICATED, AND/OR USED, EXCEPT AS EXPRESSLY APPROVED IN WRITING IN ADVANCE BY OWNER. THIS DOCUMENT SHALL BE RETURNED TO OWNER UPON REQUEST. IT MAY BE SUBJECT TO CERTAIN RESTRICTIONS UNDER APPLICABLE EXPORT CONTROL LAWS AND REGULATIONS. | | |

PRIMARY DIMENSIONS ARE INCH
mm DIMENSIONS IN [BRACKETS]
ARE FOR REFERENCE ONLY

| | | |
|---------------------------|--|----------------------------|
| DRAWN BY BISWA |  Regal Beloit America, Inc. | |
| DATE 13/03/2019 | | |
| APPROVED BY SBD | DESCRIPTION OUTLINE 213/215TC FR NEMA- SD & IEEE841 | |
| DATE 13/03/2019 | | |
| REFERENCE | MATERIAL | PROCESS/FINISH |
| THIRD ANGLE PROJECTION | SIZE B | DRAWING NUMBER SS810125 |
| | | SHEET 1 OF 1 |



| NO. | REVISION | BY & DATE | CHK | ANG | TOLERANCES UNLESS SPECIFIED | | DRAWN RM | 11/20/1990 |
|--|--|----------------|-----|---------|--------------------------------|--------|----------|--------------------------|
| | | | | | DEC. | INCHES | | |
| 5 | CHG TO REGAL LOGO | SL 09/10/2015 | AB | | | | CHK | ML 11/21/1990 |
| 4 | REVISED IEC NOTATIONS | MSG 11/15/2011 | CMN | .X | ±.1 | | APPD | SAS 04/24/2003 |
| 3 | ADDED IEC NOTATIONS... (U1), (V1) ETC. MU95194 | MSG 5/10/2010 | MJS | .XX | ±.02 | | SCALE | 1=1 |
| 2 | ADDED THE OPTIONAL CORD CONNECTION MU46318 | RDH 04/24/2003 | DRS | .XXX | ±.005 | | REF | |
| 1 | REDRAWN | RM 11/20/1990 | | .XXXX | ±.0005 | | FMF | |
| | | | | | ±7'30" | | PREV | |
| THIS DRAWING IN DESIGN AND DETAIL IS OUR PROPERTY AND MUST NOT BE USED EXCEPT IN CONNECTION WITH OUR WORK ALL RIGHTS OF DESIGN AND INVENTION ARE RESERVED THIS IS AN ELECTRONICALLY GENERATED DOCUMENT - DO NOT SCALE THIS PRINT | | | | RFP | CAD FILE ee7308 | | SIZE | DRAWING NO. PAGE OF REV. |
| | | | | DIST WP | | | A | EE7308 5 |