

PRODUCT INFORMATION PACKET

marathon®
Motors

Model No: 213TTFBD6015
Catalog No: GT12315
7.5,3600,TEFC,213TC,3/60/230/460
Miscellaneous

Regal and Marathon are trademarks of Regal Rexnord Corporation or one of its affiliated companies.
©2021 Regal Rexnord Corporation, All Rights Reserved. MC017097E

The logo for Regal Rexnord, featuring a stylized green and blue icon followed by the text "RegalRexnord" in a bold, sans-serif font.



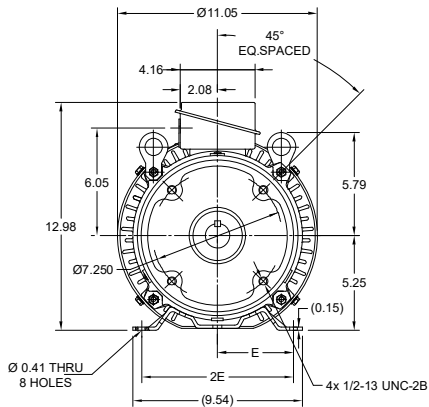
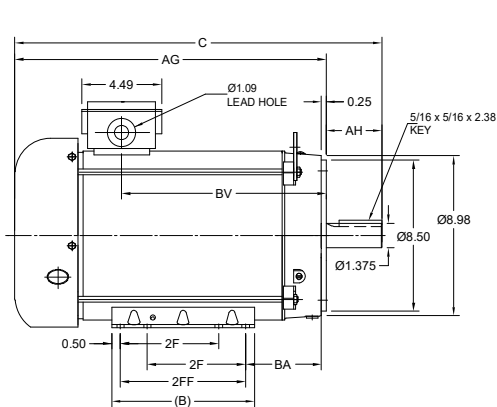
Nameplate Specifications

Technical Specifications

Outline Drawing	SS621036-100	Connection Drawing	EE7308
-----------------	--------------	--------------------	--------


This is an uncontrolled document once printed or downloaded and is subject to change without notice. Date Created:10/11/2021

DASH NO.	B	C	E	2E	2F	2FF	AG	AH	BA	BV	MOUNTING	FRAME
100	8.00	19.12	4.25	8.50	5.50	7.00	16.00	3.12	4.25	9.94	F3	213TC
200		20.62					17.50			11.44		215TC



DRAWING REVISION B	REVISION BY VS	REV DATE/ E DATE 09-03-2021
ECO CR-0001300	APPROVED BY GNK	DATE 09-03-2021
ECO DESCRIPTION DRAWING UPDATED		
<small> COPYRIGHT (REG) REGISTERED BELLOIT AMERICA, INC. ALL RIGHTS RESERVED. INVENTORSHIP AND CONFIDENTIALITY INFORMATION. THIS DOCUMENT IS THE PROPERTY OF BELLOIT AMERICA, INC. (PARENT) AND CONTAINS BELLOIT AMERICA, INC. PROPRIETARY INFORMATION. ANY PERSONAL INFORMATION OF OTHER BELLOIT AMERICA, INC. EMPLOYEES IS HEREBY NOT TO BE DISCLOSED TO ANY PERSON. BELLOIT AMERICA, INC. EMPLOYEES AS EMPLOYEES APPROVED IN ADVANCE BY OWNER. THIS DOCUMENT SHALL BE RETURNED TO OWNER UPON REQUEST. IT MAY BE SUBJECT TO CERTAIN RESTRICTIONS UNDER APPLICABLE EXPORT CONTROL LAWS AND REGULATIONS. </small>		

PRIMARY DIMENSIONS ARE INCH
MILL DIMENSIONS IN (BRACKET)
ARE FOR REFERENCE ONLY

DRAWN BY SRS	 Regal Beloit America, Inc.	DESCRIPTION OUTLINE	
DATE 16-06-2020		213/215TC FR NEMA TEFC RS F3 MTG	
APPROVED BY GNK	MATERIAL	PROCESS/FINISH	
DATE 16-06-2020		SS621036	
REFERENCE	THIRD ANGLE PROJECTION	SIZE B	SHEET 1 OF 1



				TOLERANCES UNLESS SPECIFIED		 Regal Beloit America, Inc.	DRAWN RM 11/20/1990			
5	CHG TO REGAL LOGO	SL 09/10/2015	AB	DEC.	INCHES		CHK ML 11/21/1990			
4	REVISED IEC NOTATIONS	MSG 11/15/2011	CMN	.X	±.1		APPD SAS 04/24/2003			
3	ADDED IEC NOTATIONS... (U1), (V1) ETC. MU95194	MSG 5/10/2010	MJS	.XX	±.02		SCALE 1=1			
2	ADDED THE OPTIONAL CORD CONNECTION MU46318	RDH 04/24/2003	DRS	.XXX	±.005	TITLE CONNECTION DIAGRAM 3ø – DUAL VOLTAGE MOTOR		REF		
1	REDRAWN	RM 11/20/1990		.XXXX	±.0005	MAT'L.		FMF		
NO.	REVISION	BY & DATE	CHK	ANG	±7"30"	FINISH		PREV		
THIS DRAWING IN DESIGN AND DETAIL IS OUR PROPERTY AND MUST NOT BE USED EXCEPT IN CONNECTION WITH OUR WORK ALL RIGHTS OF DESIGN AND INVENTION ARE RESERVED THIS IS AN ELECTRONICALLY GENERATED DOCUMENT – DO NOT SCALE THIS PRINT			RFP		CAD FILE ee7308		SIZE A	DRAWING NO. EE7308	PAGE OF	REV. 5
			DIST WP							