

PRODUCT INFORMATION PACKET

marathon®
Motors

Model No: 213TTFBA6029

Catalog No: GT1316

Globetrotter® General Purpose Motor, 7.50 & 5 HP, 3 Ph, 60 & 50 Hz, 230/460 & 190/380 V,
1800 & 1500 RPM, 213TC Frame, TEFC



Regal and Marathon are trademarks of Regal Rexnord Corporation or one of its affiliated companies.

©2023 Regal Rexnord Corporation, All Rights Reserved. MC017097E

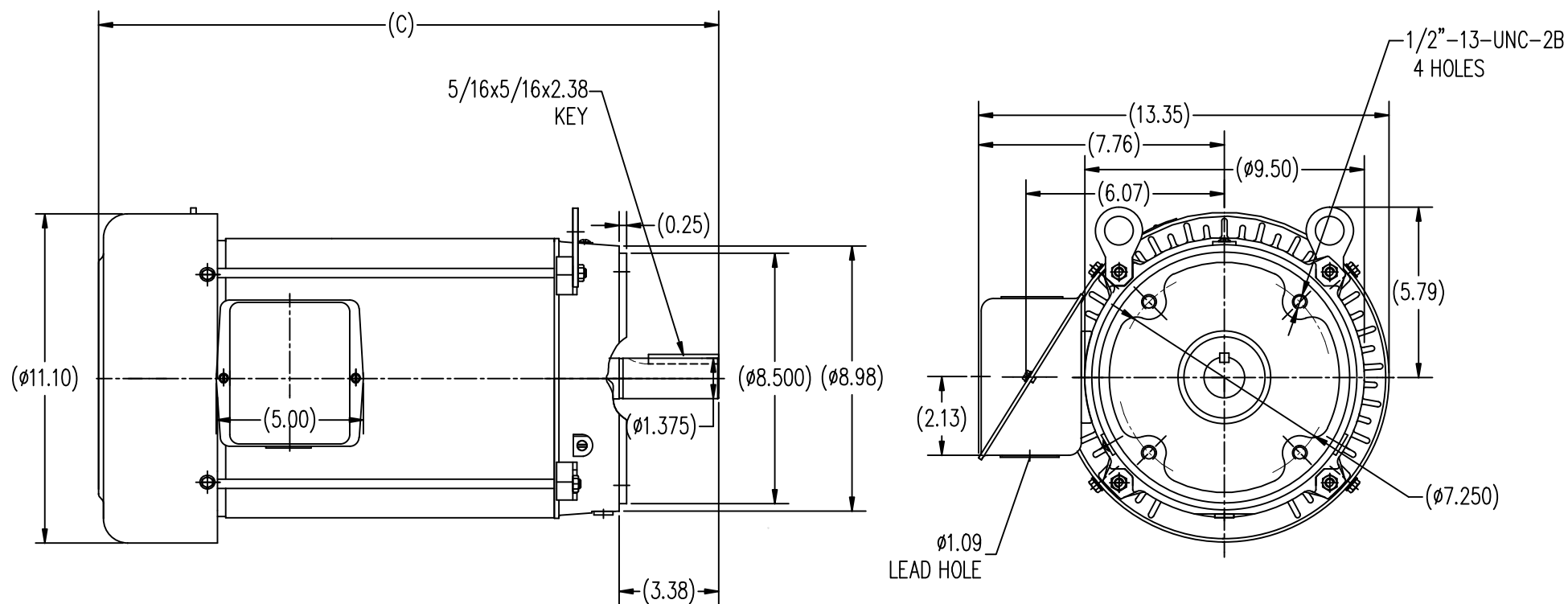
RegalRexnord

Nameplate Specifications


Phase	3	Output HP	7.50 & 5 Hp
Output KW	5.6 & 3.7 kW	Voltage	230/460 & 190/380 V
Speed	1770 & 1480 rpm	Service Factor	1.15 & 1.0
Frame	213TC	Enclosure	Totally Enclosed Fan Cooled
Thermal Protection	No Protection	Efficiency	91.7 & 92 %
Ambient Temperature	40 °C	Frequency	60 & 50 Hz
Current	18.6/9.3 & 16.4/8.2 A	Power Factor	83
Duty	Continuous	Insulation Class	F
Design Code	B	KVA Code	H
Drive End Bearing Size	6307	Opp Drive End Bearing Size	6206
UL	Recognized	CSA	Y
CE	Y	IP Code	43
Number of Speeds	1		

Technical Specifications

Electrical Type	Squirrel Cage Induction Run	Starting Method	Across The Line
Poles	4	Rotation	Reversible
Resistance Main	1.035 Ohms	Mounting	Round
Motor Orientation	Horizontal	Drive End Bearing	Ball
Opp Drive End Bearing	Ball	Frame Material	Rolled Steel
Shaft Type	T	Overall Length	19.53 in
Shaft Diameter	1.375 in	Shaft Extension	3.38 in
Assembly/Box Mounting	F1/F2 Capable		
Outline Drawing	SS620308-213TC	Connection Drawing	A-EE7308



213TC	19.53
215TC	21.02
FRAME	C

		TOLERANCES UNLESS SPECIFIED		 REGAL-BELOIT CORPORATION	DRAWN SY 4-19-2010	
		DEC.	INCHES		CHK HZJ 4-19-2010	
		.X	±.1		APPD CL 4-19-2010	
		.XX	±.03		SCALE 1=4	
		.XXX	±.005		REF	
		.XXXX	±.0005	MAT'L	FMF HWADA	
NO.	REVISION	BY & DATE	CHK ANG ±1/2	FINISH	PREV	
THIS DRAWING IN DESIGN AND DETAIL IS OUR PROPERTY AND MUST NOT BE USED EXCEPT IN CONNECTION WITH OUR WORK ALL RIGHTS OF DESIGN AND INVENTION ARE RESERVED THIS IS AN ELECTRONICALLY GENERATED DOCUMENT - DO NOT SCALE THIS PRINT			RFP	CAD FILE SS620308	SIZE B	DRAWING NO. SS620308
			DIST			REV.



				TOLERANCES UNLESS SPECIFIED		 Regal Beloit America, Inc.	DRAWN RM 11/20/1990				
5	CHG TO REGAL LOGO	SL 09/10/2015	AB	DEC.	INCHES		CHK ML 11/21/1990				
4	REVISED IEC NOTATIONS	MSG 11/15/2011	CMN	.X	±.1		APPD SAS 04/24/2003				
3	ADDED IEC NOTATIONS... (U1), (V1) ETC. MU95194	MSG 5/10/2010	MJS	.XX	±.02		SCALE 1=1				
2	ADDED THE OPTIONAL CORD CONNECTION MU46318	RDH 04/24/2003	DRS	.XXX	±.005	TITLE CONNECTION DIAGRAM 3ø – DUAL VOLTAGE MOTOR	REF				
1	REDRAWN	RM 11/20/1990		.XXXX	±.0005	MAT'L.	FMF				
NO.	REVISION	BY & DATE	CHK	ANG	±7"30"	FINISH	PREV				
THIS DRAWING IN DESIGN AND DETAIL IS OUR PROPERTY AND MUST NOT BE USED EXCEPT IN CONNECTION WITH OUR WORK ALL RIGHTS OF DESIGN AND INVENTION ARE RESERVED THIS IS AN ELECTRONICALLY GENERATED DOCUMENT – DO NOT SCALE THIS PRINT			RFP		CAD FILE ee7308		SIZE	DRAWING NO.	PAGE	OF	REV.
			DIST WP				A	EE7308			5

CERTIFICATION DATA SHEET

Model#: 213TTFBA6029 BB
 CONN. DIAGRAM: A-EE7308
 OUTLINE: B-SS620308

WINDING#: CHT21340005 NONE 1
 ASSEMBLY: F1/F2 CAPABLE

TYPICAL MOTOR PERFORMANCE DATA

HP	KW	SYNC. RPM	F.L. RPM	FRAME	ENCLOSURE	KVA CODE	DESIGN
7 1/2&5	5.60&3.70	1800	1770&1480	213TC	TEFC	H	B

PH	Hz	VOLTS	FL AMPS	START TYPE	DUTY	INSL	S.F	AMB°C	ELEVATION
3	60/50	230/460#190/ 380	18.6/9.3&16.4/ 8.2	ACROSS THE LINE	CONTINUOU S	F7	1.15/1.0	40	3300

FULL LOAD EFF: 91.7&92	3/4 LOAD EFF: 91.7	1/2 LOAD EFF: 90.2	GTD. EFF	ELEC. TYPE	NO LOAD AMPS
FULL LOAD PF: 83&74.5	3/4 LOAD PF: 75	1/2 LOAD PF: 60.5	91	SQ CAGE IND RUN	9.6 / 4.8

F.L. TORQUE	LOCKED ROTOR AMPS	L.R. TORQUE	B.D. TORQUE	F.L. RISE°C
22.2 LB-FT	126 / 63	40 LB-FT 176	64.6 LB-FT 290	35

SOUND PRESSURE @ 3 FT.	SOUND POWER	ROTOR WK^2	MAX. WK^2	SAFE STALL TIME	STARTS /HOUR	APPROX. MOTOR WGT
62 dBA	72 dBA	0.9 LB-FT^2	75 LB-FT^2	25 SEC.	2	175 LBS.

*** SUPPLEMENTAL INFORMATION ***

DE BRACKET TYPE	ODE BRACKET TYPE	MOUNT TYPE	ORIENTATION	SEVERE DUTY	HAZARDOUS LOCATION	D RIP COVER	SCREENS	PAINT
C-FACE	STANDARD	ROUND	HORIZONTAL	FALSE	NONE	FALSE	NONE	BLUE (ENAMEL)

BEARINGS		GREASE	SHAFT TYPE	SPECIAL DE	SPECIAL ODE	SHAFT MATERIAL	FRAME MATERIAL
DE	OPE						
BALL	BALL	POLYREX EM	T	NONE	NONE	1045 HOT ROLLED (C-204)	ROLLED STEEL
6307	6206						

THERMO-PROTECTORS				THERMISTORS	CONTROL	SPACE /n HEATERS
THERMOSTATS	PROTECTORS	WDG RTDs	BRG RTDs			
NONE	NOT	NONE	NONE	NONE	FALSE	NONE VOLTS

If Inverter equals NONE, contact factory for further
information

*
N
O
T
E
S
*

INVERTER TORQUE: NONE
INV. HP SPEED RANGE: NONE
ENCODER: NONE
NONE NONE
NONE NONE PPR
BRAKE: NONE NONE
NONE P/N NONE
NONE NONE
NONE FT-LB NONE V NONE Hz

DATE: 06/22/2017 05:33:53 AM
 FORM 3531 REV.3 02/07/99
 ** Subject to change without notice.

Data Sheet

Date: 6/29/2017

Customer: _____

Attention: _____

Submitted by: FAREEDA DUDEKULA



213TTFBA6029

Submittal

Data @ 460 V

Motor Load Data

Load	0%	25%	50%	75%	100%	115%	125%	LR	
Current (Amps)	4.8	5.2	6.3	7.8	9.3	10.3	11.6	63.0	
Torque (ft-lb)	0.00	5.5	11.0	16.6	22.2	25.6	28.0	40.0	
RPM	1800	1794	1787	1780	1770	1,765	1760	0	
Efficiency (%)		85.5	90.2	91.7	91.7	91.7	91.0		
P.F. (%)	4.5	38.5	60.5	75.0	83.0	84.0	84.0	36.5	

Motor Speed Data

	LR	Pull-Up	BD	Rated	Idle	Information Block				
Speed (RPM)	0	900	1620	1770	1800	HP	7.5			
Current (Amps)	63.0	63.5	42.4	9.3	4.8	Sync. RPM	1800			
Torque (ft-lb)	40.0	35.0	64.6	22.2	0.00	Frame	213			
<p>Efficiency (%) P.F. (%) Current (Amps)</p> <p>Y-axis: EFFICIENCY (%) 30.0 to 100.0, P.F. (%) 40.0 to 100.0, CURRENT (Amps) 0.0 to 14.0</p> <p>X-axis: LOAD 0% to 140%</p>						Enclosure	TEFC			
						Construction	TFC			
						Voltage	30/460#190/381V			
						Frequency	60 Hz			
						Design	B			
						LR Code letter	H			
						Service Factor	1.15			
						Temp Rise @ FL	35 °C			
						Duty	CONT			
						Ambient	40 °C			
						Elevation	1,000 feet			
						Rotor/Shaft wk ²	0.90 Lb-Ft ²			
						Ref Wdg	CHT21340005 NONE			
						Sound Pressure @ 1M	62 dBA			
						VFD Rating	NONE			
						Outline Dwg	B-SS620308			
						Conn. Diag	A-EE7308			
<p>Additional Specifications:</p> <p>0</p> <p>0</p> <p>EQUIV CKT (OHMS / PHASE)</p>						R1	R2	X1	X2	Xm
						0.6240	0.4990	2.8350	3.7420	71.5180

Speed -Torque Curve

