

PRODUCT INFORMATION PACKET

marathon®
Motors

Model No: 213TTFB6038

Catalog No: GT3516

7.50 HP Close-Coupled Pump Motor, 3 phase, 1800 RPM, 575 V, 213JP Frame, TEFC
Close-Coupled Pump Motors



Regal and Marathon are trademarks of Regal Rexnord Corporation or one of its affiliated companies.
©2021 Regal Rexnord Corporation, All Rights Reserved. MC017097E

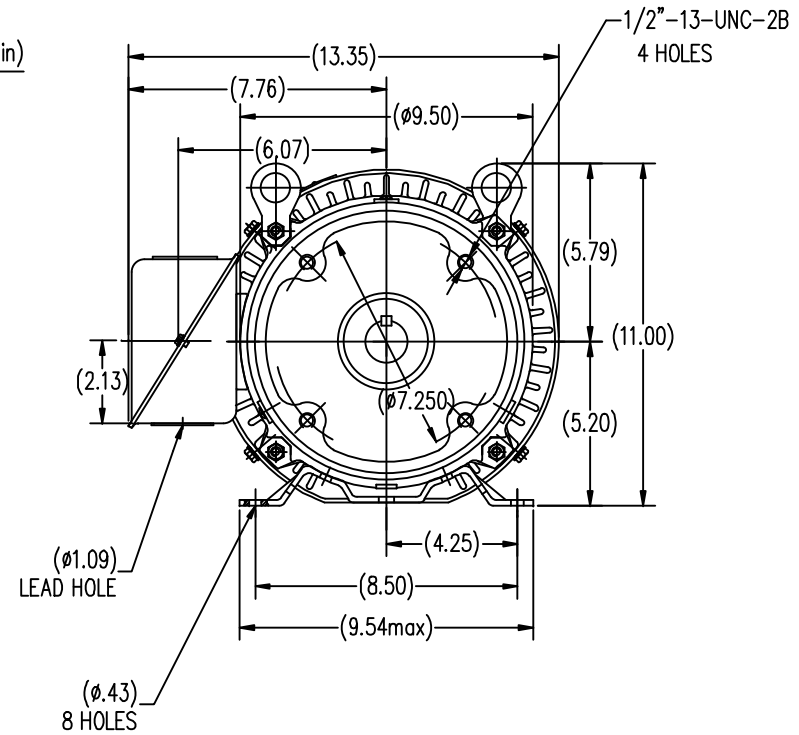
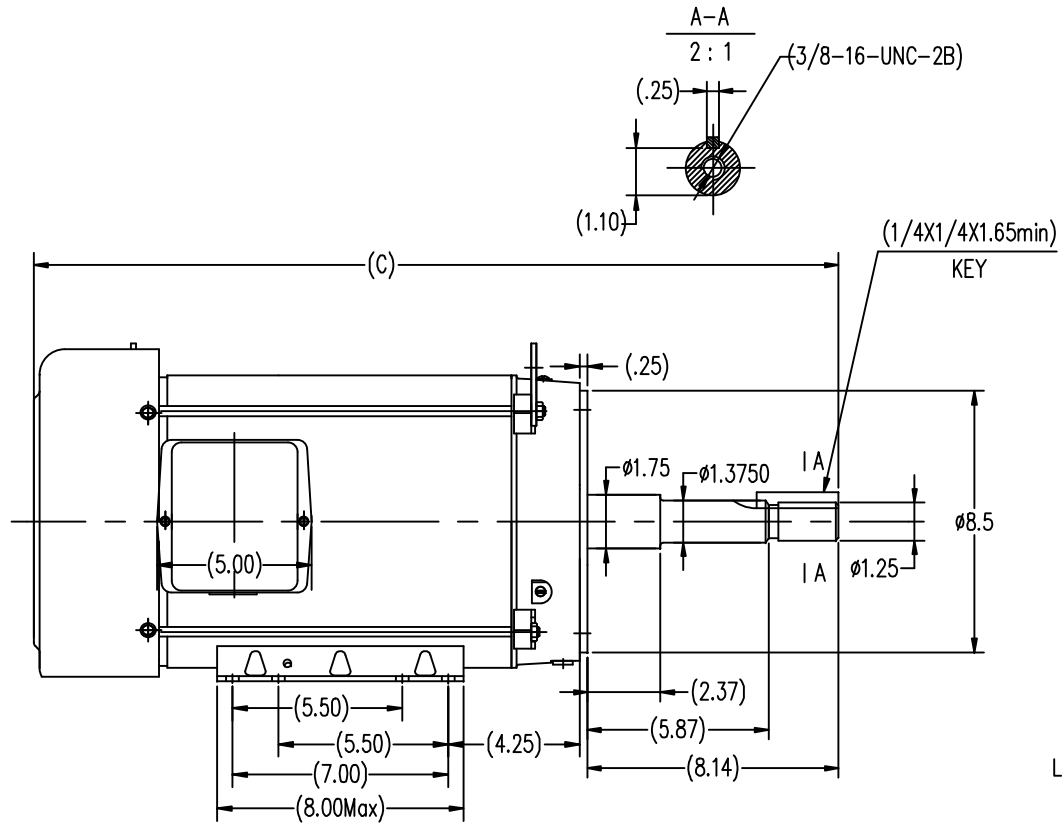
RegalRexnord

Nameplate Specifications


Output HP	7.50 Hp	Output KW	5.6 kW
Frequency	60 Hz	Voltage	575 V
Current	7.7 A	Speed	1773 rpm
Service Factor	1.15	Phase	3
Efficiency	91.7 %	Power Factor	78.5
Duty	Continuous	Insulation Class	F
Design Code	B	KVA Code	H
Frame	213JP	Enclosure	Totally Enclosed Fan Cooled
Thermal Protection	No	Ambient Temperature	40 °C
Drive End Bearing Size	6307	Opp Drive End Bearing Size	6206
UL	Recognized	CSA	Y
CE	Y	IP Code	43
Number of Speeds	1		

Technical Specifications

Electrical Type	Squirrel Cage Inverter Rated	Starting Method	Line Or Inverter
Poles	4	Rotation	Reversible
Resistance Main	1.035 Ohms	Mounting	Rigid Base
Motor Orientation	Horizontal	Drive End Bearing	Ball
Opp Drive End Bearing	Ball	Frame Material	Rolled Steel
Shaft Type	JP	Overall Length	24.54 in
Frame Length	9.65 in	Shaft Diameter	1.250 in
Shaft Extension	8.14 in	Assembly/Box Mounting	F1/F2 CAPABLE
Connection Drawing	EE7300	Outline Drawing	SS620563-213TC



213TC	24.54
215TC	26.03
FRAME	C

		TOLERANCES UNLESS SPECIFIED		 REGAL-BELOIT CORPORATION	DRAWN Lee 05-16-2012	
		DEC.	INCHES		CHK	HPH 05-16-2012
		.X	±.1		APPD	JGX 05-16-2012
		.XX	±.03		SCALE	1=4
		.XXX	±.005		REF	
		.XXXX	±.0005	MAT'L	FMF	HWADA
NO.	REVISION	BY & DATE	CHK	ANG	FINISH	PREV
THIS DRAWING IN DESIGN AND DETAIL IS OUR PROPERTY AND MUST NOT BE USED EXCEPT IN CONNECTION WITH OUR WORK ALL RIGHTS OF DESIGN AND INVENTION ARE RESERVED THIS IS AN ELECTRONICALLY GENERATED DOCUMENT - DO NOT SCALE THIS PRINT			RFP	CAD FILE	SS620563	SIZE
			DIST			B
						DRAWING NO.
						SS620563
						REV.

THREE PHASE - SINGLE VOLTAGE
MOTOR - CONDUIT BOX @ 'A'

TO REVERSE ROTATION:
INTERCHANGE ANY TWO
LINE LEAD CONNECTIONS.

TERMINAL BLOCK WHEN SPECIFIED



IF MOTOR HAS
6 LEADS



A-9806 DECAL

OPTIONAL CORD
CONNECTION



VIEW OF TERMINAL END

DRAWING REVISION AB	REVISION BY JJB	DATE 06-27-2017
ECO ECO-0125361	APPROVED BY TB	DATE 06-27-2017
ECO DESCRIPTION UPDATED TO CURRENT STANDARDS		
<small>COPYRIGHT REGAL BELOIT AMERICA, INC. ALL RIGHTS RESERVED. PROPRIETARY AND CONFIDENTIAL INFORMATION - THIS DOCUMENT IS THE PROPERTY OF REGAL BELOIT AMERICA, INC. ("OWNER") AND CONTAINS OWNER'S PROPRIETARY INFORMATION. ANY PERSON, CORPORATION OR OTHER FIRM RECEIVING IT IS DEEMED, BY RECEIVING IT, TO AGREE THAT IT, AND/OR ANY PART OF IT, SHALL NOT BE DISCLOSED TO ANY PERSON, CORPORATION OR OTHER ENTITY, DUPLICATED, AND/OR USED, EXCEPT AS EXPRESSLY APPROVED IN WRITING IN ADVANCE BY OWNER. THIS DOCUMENT SHALL BE RETURNED TO OWNER UPON REQUEST. IT MAY BE SUBJECT TO CERTAIN RESTRICTIONS UNDER APPLICABLE EXPORT CONTROL LAWS AND REGULATIONS.</small>		

DRAWN BY DA
DATE 03-26-1993
APPROVED BY TB
DATE 03-26-1993
REFERENCE
THIRD ANGLE PROJECTION



Regal Beloit America, Inc.

DESCRIPTION
CONNECTION DIAGRAM
EXTERNAL - SINGLE VOLTAGE - 3Ø MOTOR

MATERIAL PROCESS/FINISH

SIZE A	DRAWING NUMBER EE7300	SHEET 1 OF 1
-----------	--------------------------	-----------------

CERTIFICATION DATA SHEET

Model#: 213TTFB6038 AA
 CONN. DIAGRAM: EE7300
 OUTLINE: SS620563

WINDING#: CHT21340005 NONE 3
 ASSEMBLY: F1/F2 CAPABLE

TYPICAL MOTOR PERFORMANCE DATA

HP	KW	SYNC. RPM	F.L. RPM	FRAME	ENCLOSURE	KVA CODE	DESIGN
7 1/2	5.60	1800	1773	213JP	TEFC	H	B

PH	Hz	VOLTS	FL AMPS	START TYPE	DUTY	INSL	S.F	AMB°C	ELEVATION
3	60	575	7.7	LINE OR INVERTER	CONTINUOUS	F7	1.15	40	3300

FULL LOAD EFF: 91.7	3/4 LOAD EFF: 91.7	1/2 LOAD EFF: 90.2	GTD. EFF	ELEC. TYPE	NO LOAD AMPS
FULL LOAD PF: 78.5	3/4 LOAD PF: 75	1/2 LOAD PF: 60.5	91	SQ CAGE INV RATED	3.8

F.L. TORQUE	LOCKED ROTOR AMPS	L.R. TORQUE	B.D. TORQUE	F.L. RISE°C
22.2 LB-FT	50.4	40 LB-FT 176	64.6 LB-FT 290	35

SOUND PRESSURE @ 3 FT.	SOUND POWER	ROTOR WK^2	MAX. WK^2	SAFE STALL TIME	STARTS /HOUR	APPROX. MOTOR WGT
62 dBA	72 dBA	0.9 LB-FT^2	75 LB-FT^2	25 SEC.	2	175 LBS.

*** SUPPLEMENTAL INFORMATION ***

DE BRACKET TYPE	ODE BRACKET TYPE	MOUNT TYPE	ORIENTATION	SEVERE DUTY	HAZARDOUS LOCATION	DRIP COVER	SCREENS	PAINT
C-FACE	STANDARD	RIGID	HORIZONTAL	FALSE	NONE	FALSE	NONE	BLUE (ENAMEL)

BEARINGS		GREASE	SHAFT TYPE	SPECIAL DE	SPECIAL ODE	SHAFT MATERIAL	FRAME MATERIAL
DE	OPE						
BALL	BALL						
6307	6206	POLYREX EM	JP	NONE	NONE	1045 HOT ROLLED (C-204)	ROLLED STEEL

THERMO-PROTECTORS				THERMISTORS	CONTROL	SPACE /n HEATERS
THERMOSTATS	PROTECTORS	WDG RTDs	BRG RTDs			
NONE	NOT	NONE	NONE	NONE	FALSE	NONE VOLTS

If Inverter equals NONE, contact factory for further information

INVERTER TORQUE: VARIABLE 10:1
 INV. HP SPEED RANGE: NONE

ENCODER: NONE
 NONE NONE
 NONE NONE PPR

BRAKE: NONE NONE
 NONE P/N NONE
 NONE NONE
 NONE FT-LB NONE V NONE Hz

*
N
O
T
E
S
*

DATE: 06/22/2017 05:13:10 AM
 FORM 3531 REV.3 02/07/99
 ** Subject to change without notice.

Data Sheet

Date: 6/19/2017

Customer: _____

Attention: _____

Submitted by: FAREEDA DUDEKULA



213TTFB6038

Submittal

Data @ 575 V

Motor Load Data

Load	0%	25%	50%	75%	100%	115%	125%	LR	
Current (Amps)	3.8	4.2	5.0	6.2	7.4	8.2	9.3	50.4	
Torque (ft-lb)	0.00	5.5	11.0	16.6	22.2	25.6	28.0	40.0	
RPM	1800	1794	1787	1780	1770	1,765	1760	0	
Efficiency (%)		85.5	90.2	91.7	91.7	91.7	91.0		
P.F. (%)	4.5	38.5	60.5	75.0	83.0	84.0	84.0	36.5	

Motor Speed Data

	LR	Pull-Up	BD	Rated	Idle	Information Block																												
Speed (RPM)	0	900	1620	1770	1800	HP		7.5																										
Current (Amps)	50.4	50.8	33.9	7.4	3.8	Sync. RPM		1800																										
Torque (ft-lb)	40.0	35.0	64.6	22.2	0.00	Frame		213																										
<div><div>— Efficiency (%) — P.F. (%) — Current (Amps)</div><table><caption>Graph Data Points (Estimated)</caption><thead><tr><th>Load (%)</th><th>Efficiency (%)</th><th>P.F. (%)</th><th>Current (Amps)</th></tr></thead><tbody><tr><td>25</td><td>85</td><td>38</td><td>3.8</td></tr><tr><td>50</td><td>90</td><td>65</td><td>6.5</td></tr><tr><td>75</td><td>91</td><td>78</td><td>7.8</td></tr><tr><td>100</td><td>92</td><td>82</td><td>8.2</td></tr><tr><td>125</td><td>92</td><td>84</td><td>9.2</td></tr></tbody></table></div>						Load (%)	Efficiency (%)	P.F. (%)	Current (Amps)	25	85	38	3.8	50	90	65	6.5	75	91	78	7.8	100	92	82	8.2	125	92	84	9.2	Enclosure		TEFC		
						Load (%)	Efficiency (%)	P.F. (%)	Current (Amps)																									
						25	85	38	3.8																									
						50	90	65	6.5																									
						75	91	78	7.8																									
						100	92	82	8.2																									
						125	92	84	9.2																									
						Construction		TFC																										
						Voltage		575 V																										
						Frequency		60 Hz																										
						Design		B																										
						LR Code letter		H																										
						Service Factor		1.15																										
						Temp Rise @ FL		35 ° C																										
						Duty		CONT																										
						Ambient		40 ° C																										
						Elevation		1,000 feet																										
Rotor/Shaft wk²		0.90 Lb-Ft²																																
Ref Wdg		CHT21340005 NONE																																
Sound Pressure @ 1M		62 dBA																																
VFD Rating		VARIABLE 10:1																																
Outline Dwg		SS620563																																
Conn. Diag		EE7300																																
Additional Specifications:																																		
0																																		
0																																		
EQUIV CKT (OHMS / PHASE)																																		
R1		R2		X1		X2		Xm																										
0.9750		0.7800		4.4300		5.8470		111.7460																										

Speed -Torque Curve

