

PRODUCT INFORMATION PACKET

marathon®
Motors

Model No: 213TTDWD16086

Catalog No: U907A

General Purpose Motors, Drip Proof, 3 HP, 3 Ph, 60 Hz, 200 V, 1175 RPM, 213T

General Purpose Motors



Regal and Marathon are trademarks of Regal Rexnord Corporation or one of its affiliated companies.

©2022 Regal Rexnord Corporation, All Rights Reserved. MC017097E

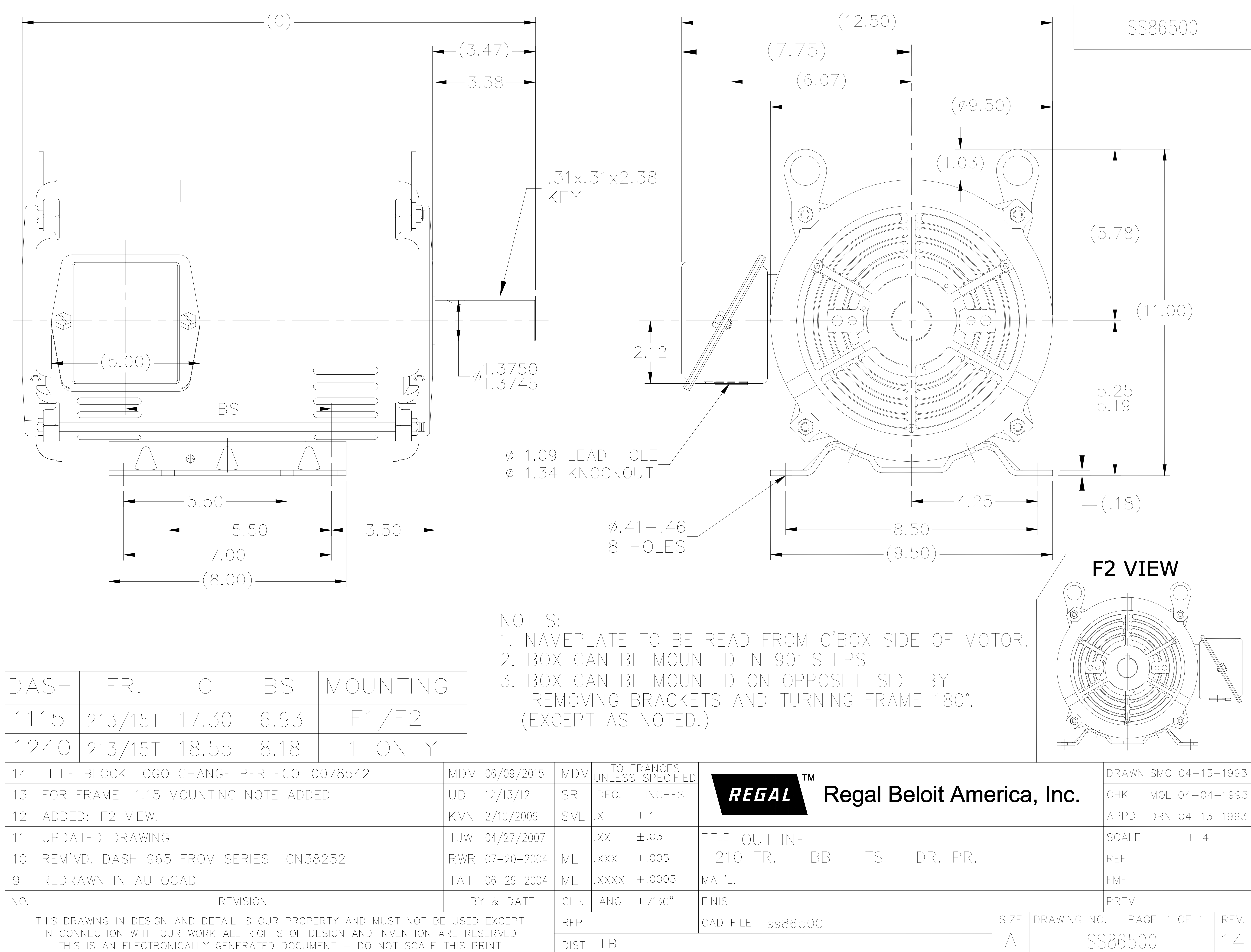
RegalRexnord

Nameplate Specifications

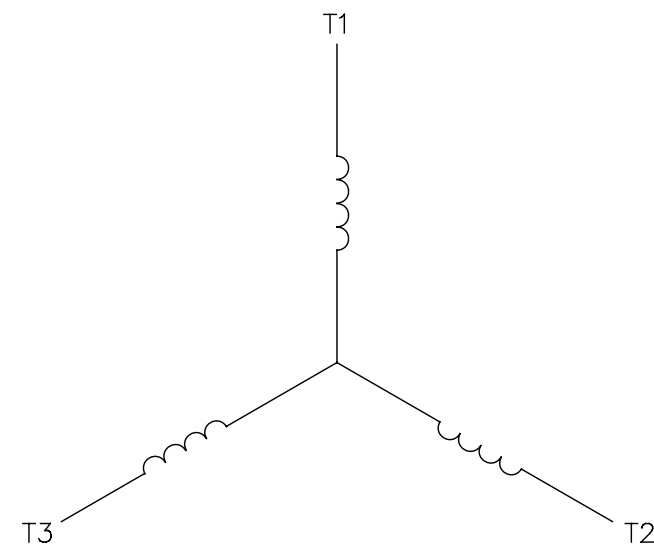
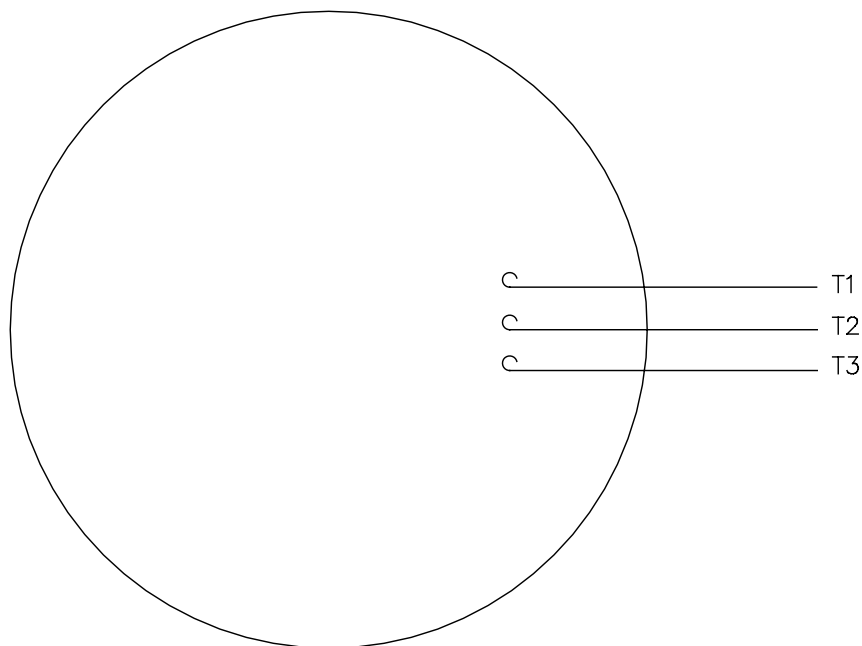
Output HP	3 Hp	Output KW	2.2 kW
Frequency	60 Hz	Voltage	200 V
Current	10.4 A	Speed	1175 rpm
Service Factor	1.15	Phase	3
Efficiency	88.5 %	Power Factor	71
Duty	Continuous	Insulation Class	F
Design Code	B	KVA Code	K
Frame	213T	Enclosure	Drip Proof
Thermal Protection	No	Ambient Temperature	40 °C
Drive End Bearing Size	6307	Opp Drive End Bearing Size	6206
UL	Recognized	CSA	Y
CE	Y	IP Code	12
Number of Speeds	1		

Technical Specifications

Electrical Type	Squirrel Cage Induction Run	Starting Method	Across The Line
Poles	6	Rotation	Reversible
Resistance Main	3.16 Ohms	Mounting	Rigid Base
Motor Orientation	Horizontal	Drive End Bearing	Ball
Opp Drive End Bearing	Ball	Frame Material	Rolled Steel
Shaft Type	T	Overall Length	17.30 in
Frame Length	11.15 in	Shaft Diameter	1.375 in
Shaft Extension	3.47 in	Assembly/Box Mounting	F1/F2 CAPABLE
Outline Drawing	SS86500-1115	Connection Drawing	005102.01




LINE LEADS



CONNECT LEADS AS FOLLOWS
FOR FOUR CONDUCTOR CORD ()

CORD	L1 (RED)	L2 (WHITE)	L3 (BLACK)	(GREEN)
MOTOR	T1	T2	T3	GROUND

				TOLERANCES UNLESS SPECIFIED		 Regal Beloit America, Inc.			DRAWN	JRW 9/11/75	
				DEC.	INCHES				CHK		
				.X	±.1				APPD	JCW 9/11/75	
08	UPDATED TO REGAL LOGO	SAJ 06/26/15	AJY	.XX	±.01	TITLE EXTERNAL WIRING DIAGRAM TYPE "T" W/O PROTECTOR			SCALE	1=1	
07	UPDATED TO CURRENT STANDARDS	DBT 5/30/97		.XXX	±.005				REF	W-T6343-6	
06	REDRAWN ON CAD; ADDED DECAL NUMBER	SAW 1/24/95		.XXXX	±.0005	MAT'L DECAL - 004169			FMF	6T17FB7	
NO.	REVISION	BY & DATE	CHK	ANG	±1/2"	FINISH			PREV		
THIS DRAWING IN DESIGN AND DETAIL IS OUR PROPERTY AND MUST NOT BE USED EXCEPT IN CONNECTION WITH OUR WORK ALL RIGHTS OF DESIGN AND INVENTION ARE RESERVED THIS IS AN ELECTRONICALLY GENERATED DOCUMENT - DO NOT SCALE THIS PRINT				RFP 5/1/02		CAD FILE 00510201		SIZE	DRAWING NO.		REV
				DIST BRF-NLV				A	005102-01		08

Uncontrolled Copy



**P.O. BOX 8003
WAUSAU, WI 54401-8003
PH. 715-675-3311**

CERTIFICATION DATA SHEET**CUSTOMER:****CUSTOMER****PO#:****ORDER #:****MODEL #:** 213TTDWD16086 AA**CONN. DIAGRAM:** 005102.01**CUSTOMER PART****#:****OUTLINE:** SS86500-1115**MOUNTING:** F1/F2 CAPABLE**WINDING #:** K213698 3**TYPICAL MOTOR PERFORMANCE DATA**

HP	kW	SYNC. RPM	F.L. RPM	FRAME	ENCLOSURE	KVA CODE	DESIGN
3	2.24	1200	1175	213T	DP	K	B

PH	Hz	VOLTS	AMPS	START TYPE	DUTY	INSL	S.F.	AMB°C
3	60	200	10.4	ACROSS THE LINE	CONTINUOUS	F4	1.15	40

FULL LOAD EFF:	88.5	3/4 LOAD EFF:	87.8	1/2 LOAD EFF:	86.7	GTD. EFF		ELEC. TYPE
FULL LOAD PF:	71	3/4 LOAD PF:	63.1	1/2 LOAD PF:	51	86.5		SQ CAGE IND RUN

F.L. TORQUE		LOCKED ROTOR AMPS		L.R. TORQUE		B.D. TORQUE		F.L. RISE°C
13.5	LB-FT	70.2		29	LB-FT 215 %	46	LB-FT 341 %	20

SOUND PRESSURE @ 3 FT.		SOUND POWER		ROTOR WK^2		MAX. WK^2		SAFE STALL TIME		STARTS / HOUR		APPROX. MOTOR WGT	
62	dBA	72	dBA	0.8	LB-FT^2	50	LB-FT^2	20	SEC.	2		110	LBS.

***** SUPPLEMENTAL INFORMATION *****

DE BRACKET TYPE	ODE BRACKET TYPE	MOUNT TYPE	ORIENTATION	SEVERE DUTY	HAZARDOUS LOCATION	DRIP COVER	SCREENS	PAINT
STANDARD	STANDARD	RIGID	HORIZONTAL	FALSE	NONE	FALSE	NONE	BLUE (ENAMEL)

BEARINGS		GREASE	SHAFT TYPE	SPECIAL DE	SPECIAL ODE	SHAFT MATERIAL	FRAME MATERIAL
DE	ODE						
BALL	BALL	POLYREX EM	T	NONE	NONE	AISI 1045 (C-240)	ROLLED STEEL
6307	6206						

THERMO-PROTECTORS				THERMISTORS	CONTROL	SPACE HEATERS
THERMOSTATS	PROTECTORS	WDG RTDs	BRG RTDs			
NONE	NOT	NONE	NONE	NONE	FALSE	NONE VOLTS

*

N

O

T

E

S

*

INVERTER TORQUE: NONE
INV. HP SPEED RANGE: NONE

ENCODER: NONE
NONE NONE
NONE NONE PPR

BRAKE: NONE NONE
NONE P/N NONE
NONE NONE
NONE FT-LB NONE V NONE Hz

PREPARED BY: Anusha Muthyala**DATE:** 09/24/2019 01:09:26 AM

FORM 3531 REV.3 02/07/99

** Subject to change without notice.

Data Sheet

Date: 15-06-2017

Customer:

Attention:

Submitted by: FAREEDA DUDEKULA



213TTDWD16086

Submittal

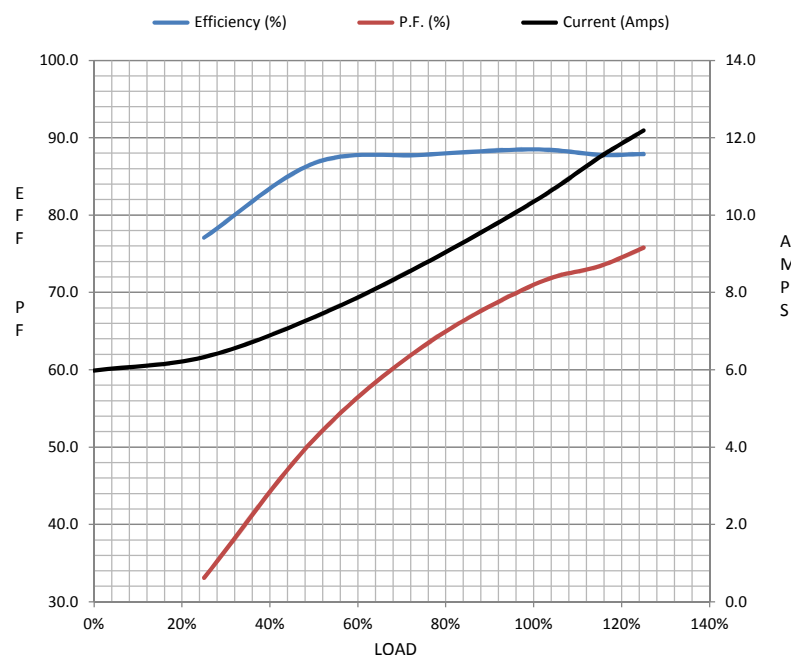
Data @ 200 V

Motor Load Data

Load	0%	25%	50%	75%	100%	115%	125%	LR	
Current (Amps)	6.0	6.3	7.4	8.7	10.4	11.5	12.2	70.2	
Torque (ft-lb)	0.00	3.3	6.7	10.0	13.5	15.5	17.0	29.0	
RPM	1200	1192	1185	1180	1175	1,167	1165	0	
Efficiency (%)		77.1	86.7	87.8	88.5	87.8	87.9		
P.F. (%)	7.2	33.1	51.0	63.1	71.0	73.4	75.8	41.0	

Motor Speed Data

	LR	Pull-Up	BD	Rated	Idle	Information Block	
Speed (RPM)	0	500	1000	1175	1200	HP	3.0
Current (Amps)	70.2	64.4	46.0	10.4	6.0	Sync. RPM	1200
Torque (ft-lb)	29.0	29.0	46.0	13.5	0.00	Frame	213



Frame	213			
Enclosure	DP			
Construction	TDW			
Voltage	200 V			
Frequency	60 Hz			
Design	B			
LR Code letter	K			
Service Factor	1.15			
Temp Rise @ FL	20 ° C			
Duty	CONT			
Ambient	40 ° C			
Elevation	1,000 feet			
Rotor/Shaft wk²	0.80 Lb-Ft²			
Ref Wdg	K213698 NONE			
Sound Pressure @ 1M	62 dBA			
VFD Rating	NONE			
Outline Dwg	SS86500-1115			
Conn. Diag	005102.01			
Additional Specifications:				
0				
365THFS8036				
EQUIV CKT (OHMS / PHASE)				
R1	R2	X1	X2	Xm
0.3520	0.2910	1.3580	1.4260	18.7350

Speed -Torque Curve

