

PRODUCT INFORMATION PACKET

marathon®
Motors

Model No: 213TTDWD16075

Catalog No: U430B-P

XRI® General Purpose General Purpose Motor, 7.50 & 5 HP, 3 Ph, 60 & 50 Hz, 230/460 & 190/380 V,
1800 & 1500 RPM, 213T Frame, DP



Regal and Marathon are trademarks of Regal Rexnord Corporation or one of its affiliated companies.

©2023 Regal Rexnord Corporation, All Rights Reserved. MC017097E

RegalRexnord

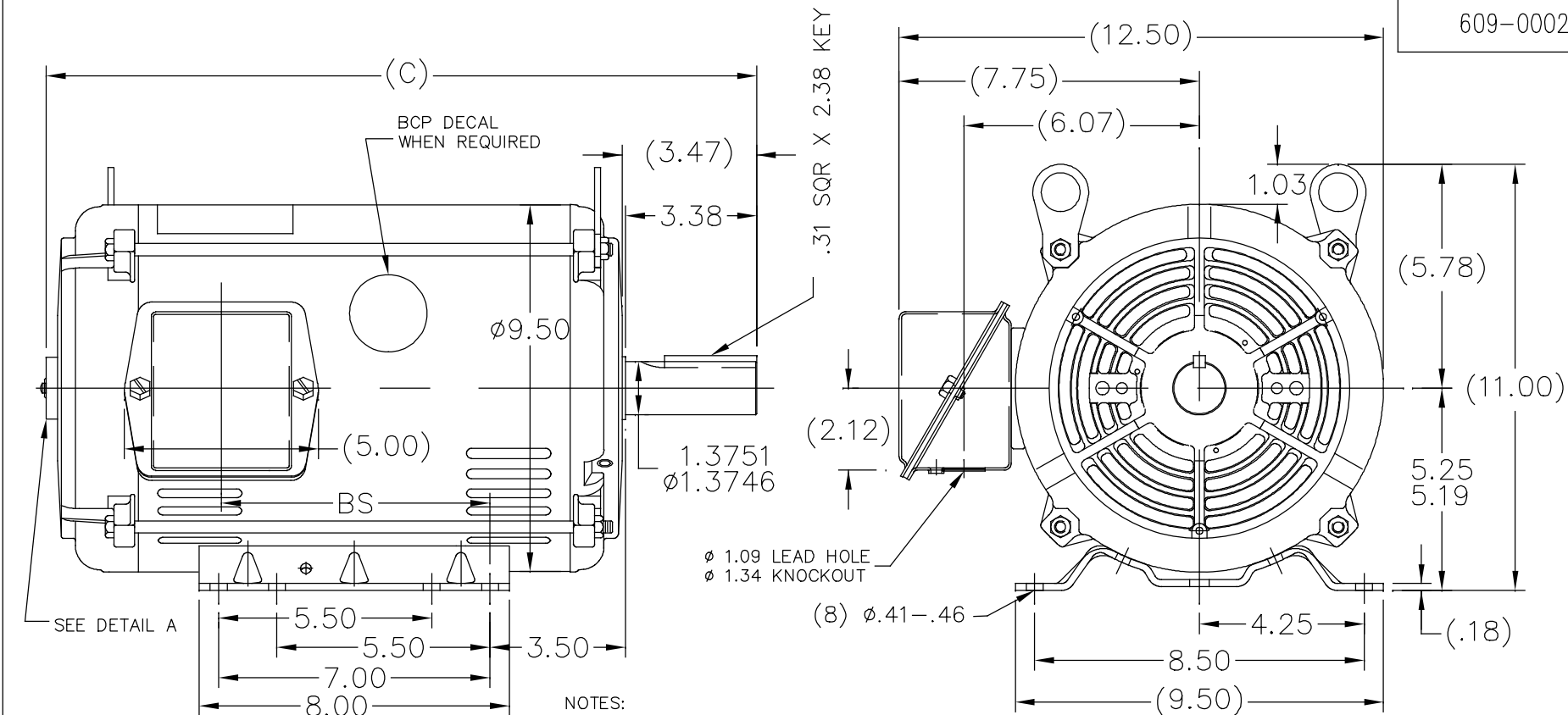
Nameplate Specifications

Phase	3	Output HP	7.50 & 5 Hp
Output KW	5.6 & 3.7 kW	Voltage	230/460 & 190/380 V
Speed	1765 & 1470 rpm	Service Factor	1.15 & 1.15
Frame	213T	Enclosure	Drip Proof
Thermal Protection	No Protection	Efficiency	91 & 91 %
Ambient Temperature	40 °C	Frequency	60 & 50 Hz
Current	20/10 & 16.4/8.2 A	Power Factor	77.1
Duty	Continuous	Insulation Class	F
Design Code	B	KVA Code	H
Drive End Bearing Size	6307	Opp Drive End Bearing Size	6206
UL	Recognized	CSA	Y
CE	Y	IP Code	22
Number of Speeds	1		

Technical Specifications

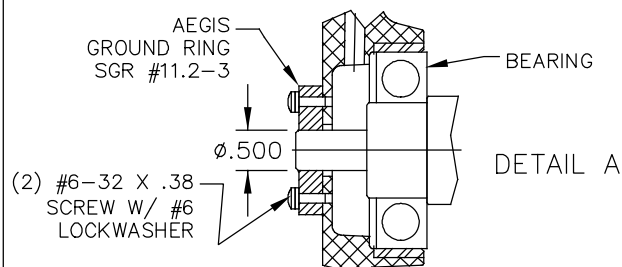
Electrical Type	Squirrel Cage Inverter Rated	Starting Method	Line Or Inverter
Poles	4	Rotation	Reversible
Resistance Main	1.56 Ohms	Mounting	Rigid Base
Motor Orientation	Horizontal	Drive End Bearing	Ball
Opp Drive End Bearing	Ball	Frame Material	Rolled Steel
Shaft Type	T	Overall Length	18.25 in
Frame Length	11.15 in	Shaft Diameter	1.375 in
Shaft Extension	3.38 in	Assembly/Box Mounting	F1/F2 CAPABLE
Inverter Load	VARIABLE 10:1		
Connection Drawing	005010.01	Outline Drawing	609-0002-1115

609-0002



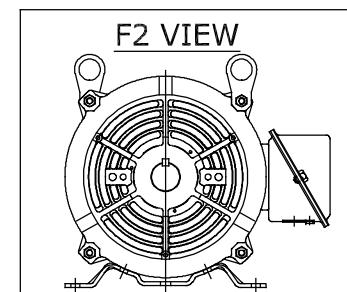
NOTES:


1. NAMEPLATE TO BE READ FROM C'BOX SIDE OF MOTOR.
2. BOX CAN BE MOUNTED IN 90° STEPS.
3. BOX CAN BE MOUNTED ON OPPOSITE SIDE BY REMOVING BRACKETS AND TURNING FRAME 180°. (EXCEPT AS NOTED.)



GROUND RING SCREWS ARE MOUNTED IN HORIZONTAL POSITION.

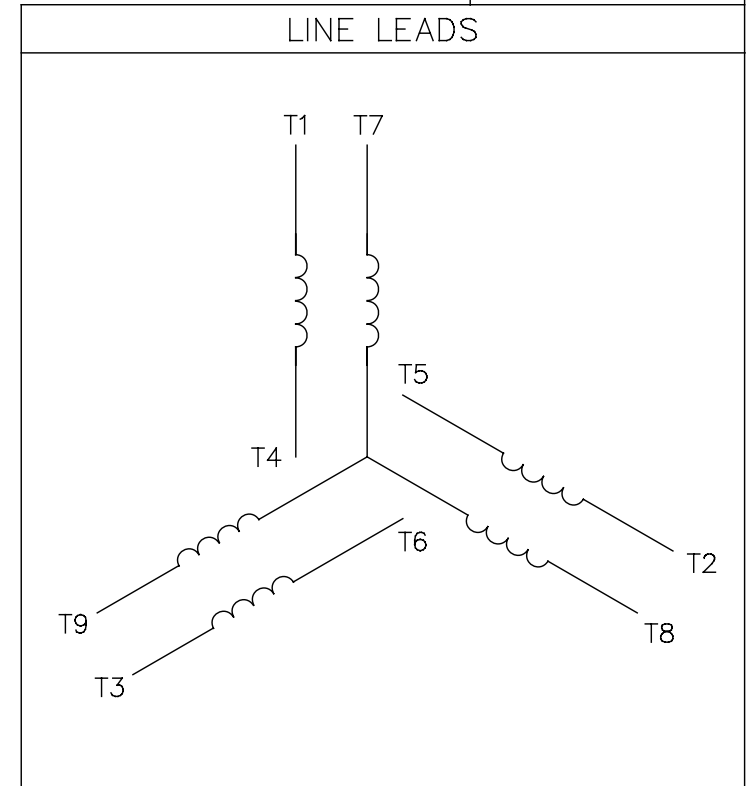
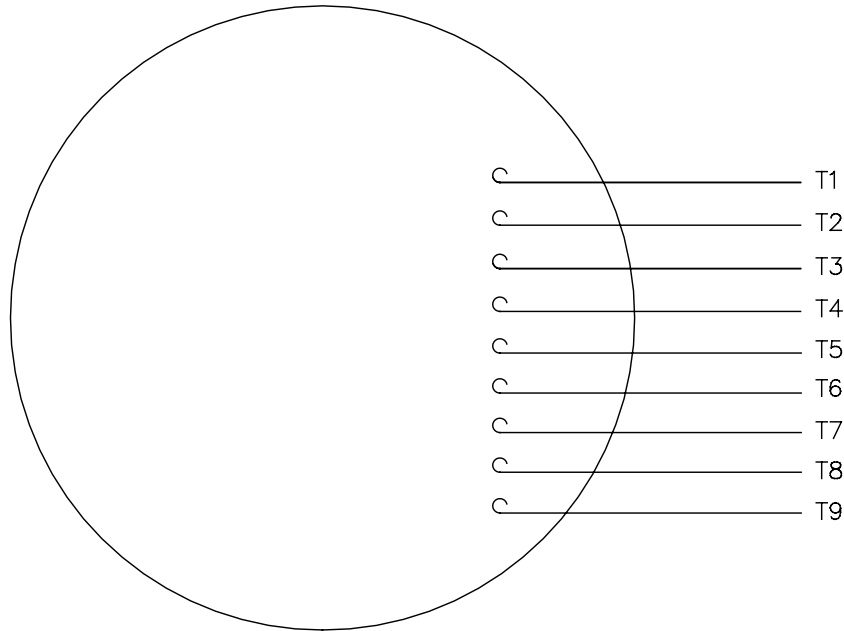
DASH	FR.	C	BS	MOUNTING
965	213T	16.75	5.43	
1115	213/15T	18.25	6.93	
1240	213/15T	19.50	8.18	F1 ONLY
1545	215T	22.88	11.23	F1 ONLY




				TOLERANCES UNLESS SPECIFIED		 Regal Beloit America, Inc.	DRAWN LST 6/27/13		
				DEC.	INCHES		CHK		
				.X	±.1		APPD		
C	F2 VIEW ADDED	NK 07/03/18	GNK	.XX	±.03	TITLE OUTLINE 210T FR. — BB — TS — DR.PR.	SCALE	1=4	
B	TITLE BLOCK LOGO CHANGE PER ECO-0078542	MDV 06-09-15	MDV	.XXX	±.005		REF		
A	LEAD HOLE & KNOCKOUT ADDED PER ECO-0059319	UD 09-03-14	ST	.XXXX	±.0005		FMF		
NO.	REVISION	BY & DATE	CHK	ANG	±7°30"	FINISH	PREV		
THIS DRAWING IN DESIGN AND DETAIL IS OUR PROPERTY AND MUST NOT BE USED EXCEPT IN CONNECTION WITH OUR WORK ALL RIGHTS OF DESIGN AND INVENTION ARE RESERVED THIS IS AN ELECTRONICALLY GENERATED DOCUMENT — DO NOT SCALE THIS PRINT			RFP		CAD FILE SS86668	SIZE A	DRAWING NO. 609-0002	PAGE OF	REV. C
			DIST LB						

005010-01

VIEW FROM OUTSIDE OF MOTOR AT SWITCH END.



VOLTAGE	L1	L2	L3	JOIN & INSULATE
HIGH	T1	T2	T3	(T4,T7) (T5,T8) (T6,T9)
LOW	T1,T7	T2,T8	T3,T9	T4,T5,T6

				TOLERANCES UNLESS SPECIFIED		 Regal Beloit America, Inc.			DRAWN RDW 04/12/02		
				DEC.	INCHES				CHK		
				.X	±.1				APPD		
				.XX	±.01				SCALE 1=1		
				.XXX	±.005	TITLE EXTERNAL WIRING DIAGRAM 3 PHASE W/O PROTECTOR			REF FIG.2-51		
A	UPDATED TO REGAL LOGO		SAJ 06/26/15	AJY	.XXXX	±.0005	MAT'L. DECAL - 004014			FMF	
NO.	REVISION		BY & DATE	CHK	ANG	±1/2"	FINISH			PREV	
THIS DRAWING IN DESIGN AND DETAIL IS OUR PROPERTY AND MUST NOT BE USED EXCEPT IN CONNECTION WITH OUR WORK ALL RIGHTS OF DESIGN AND INVENTION ARE RESERVED THIS IS AN ELECTRONICALLY GENERATED DOCUMENT - DO NOT SCALE THIS PRINT				RFP 04/12/02		CAD FILE 00501001		SIZE A	DRAWING NO. 005010-01		REV. A
				DIST BRF-NLV							



P.O. BOX 8003
WAUSAU, WI 54401-8003
PH. 715-675-3311

DATA VOLTS: 460

CERTIFICATION DATA SHEET

CUSTOMER: _____ CUSTOMER P.O. #: _____
ORDER #: _____ REFERENCE MODEL #: 213TTDWD16075
CONN. DIAGRAM: 005010.01 CAT #: U430B-P
OUTLINE: 609-0002-1115 CUSTOMER PART #: _____
WINDING: K2134278 NONE 2 MOUNTING: F1/F2 CAPABLE
SPEED: _____

TYPICAL MOTOR PERFORMANCE DATA

HP	KW	SYNC RPM	FL RPM	FRAME	ENCLOSURE	TYPE	KVA CODE	DESIGN
7.5	5.6	1800	1765	213T	DP	TDW	H	B

PH	HZ	VOLTS	AMPS	START TYPE	DUTY	INSL	S.F.	AMB	ELEV.
3	60/50	230/460#190/380	20/10&16.4/8.2	LINE OR INVERTER	CONT	F	1.15	40	3300

F.L. EFF	91.0	3/4 LD EFF	91.0	1/2 LD EFF	89.9	GTD EFF	ELECT. TYPE
F.L. PF	77.1	3/4 LD PF	71.3	1/2 LD PF	58.1	89.5	SQ CAGE INV RATED

F.L. TORQUE	LR AMPS @ 460 V	L.R. TORQUE	B.D. TORQUE	F.L. RISE (°C)
22.3 LB-FT	61.0	45.3 LB-FT 203%	66.1 LB-FT 296%	35

@ 3 FT.	POWER	ROTOR WK²	MAX. LOAD WK²	SAFE STALL TIME	STARTS/HOUR	MOTOR WGT
66 dBA	75 dBA	0.85 LB-FT²	50 LB-FT²	20 SEC.	2	125 LB.

*** SUPPLEMENTAL INFORMATION ***

DE BRACKET TYPE	ODE BRACKET TYPE	MOUNT TYPE	MOTOR ORIENTATION	SEVERE DUTY	HAZARDOUS LOCATION	DRIP COVER	SCREENS	PAINT
STANDARD	STANDARD	RIGID	HORIZONTAL	NO	NONE	NO	NONE	BLUE (ENAMEL)

BEARINGS		GREASE	SHAFT TYPE	SPECIAL DE	SPECIAL ODE	SHAFT MATERIAL	FRAME MATERIAL
DE	ODE						
BALL	BALL	POLYREX EM	T	NONE	NONE	AISI 1045 (C-240)	ROLLED STEEL
6307	6206						

THERMOSTATS	PROTECTORS	WDG RTD's	BRG RTD's	THERMISTORS	CONTROL	SPACE HEATERS
NONE	NOT	NONE	NONE	NONE	FALSE	NA

R1 (ohms/ph)	R2 (ohms/ph)	X1 (ohms/ph)	X2 (ohms/ph)	Xm (ohms/ph)	VIBRATION (in/sec)	FLOAT
0.76	0.559	2.608	3.697	57.456	0.150	ODE

* N O T E S *			INVERTER TORQUE: VARIABLE 10:1 INV. HP SPEED RANGE: NONE
			ENCODER: NONE NONE NONE
			NONE PPR
PREPARED BY: FAREEDA DUDEKULA DATE: 9/11/2018			BRAKE: NONE NONE NONE
			FT-LB: NA VOLTAGE: NONE HZ:
FORM: 3531 REV_4 2/27/06			UL: V-INS, CONST UL REC

Data Sheet

Date: 12/3/2018

Customer: _____

Attention: _____

Submitted by: FAREEDA DUDEKULA



213TTDWD16075

Submittal

Data @ 460 V

Motor Load Data

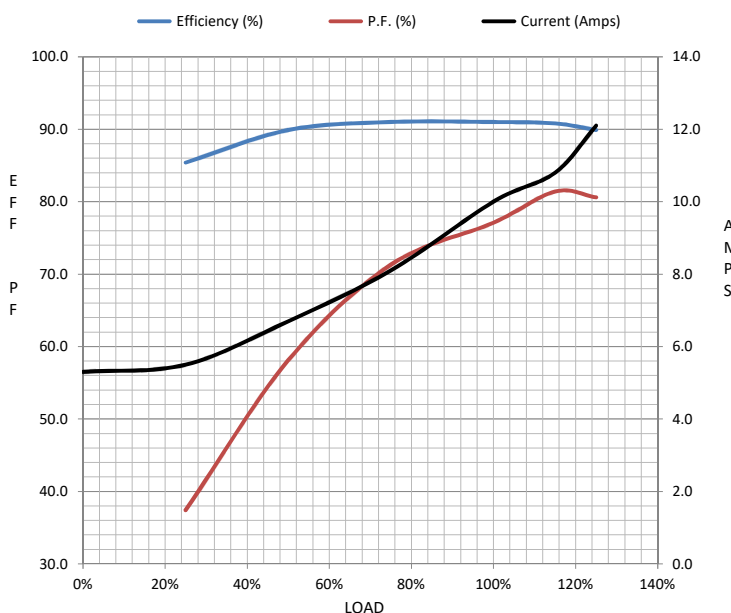
Load	0%	25%	50%	75%	100%	115%	125%	LR	
Current (Amps)	5.3	5.5	6.7	8.1	10.0	10.8	12.1	61.0	
Torque (ft-lb)	0.00	5.5	11.0	16.6	22.3	25.5	28.0	45.3	
RPM	1800	1792	1784	1775	1765	1755	1748	0	
Efficiency (%)		85.4	89.9	91.0	91.0	90.8	89.9		
P.F. (%)	5.2	37.4	58.1	71.3	77.1	81.4	80.6	44.8	

Motor Speed Data

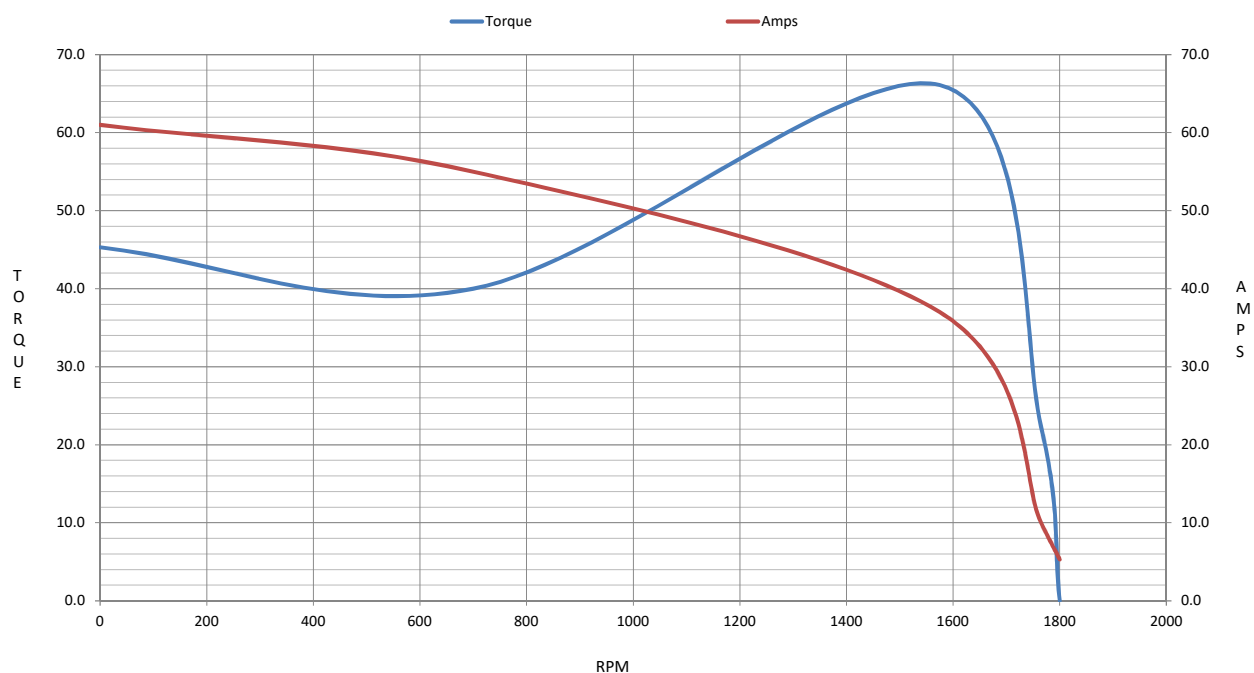
	LR	Pull-Up	BD	Rated	Idle
Speed (RPM)	0	700	1575	1765	1800
Current (Amps)	61.0	55.0	37.0	10.0	5.3
Torque (ft-lb)	45.3	40.0	66.1	22.3	0.00

Information Block

HP	7.5			
Sync. RPM	1800			
Frame	213			
Enclosure	DP			
Construction	TDR			
Voltage	230/460#190/380	V		
Frequency	60	Hz		
Design	B			
LR Code letter	H			
Service Factor	1.15			
Temp Rise @ FL	35	° C		
Duty	CONT			
Ambient	40	° C		
Elevation	1,000	feet		
Rotor/Shaft wk²	0.85	Lb-Ft²		
Ref Wdg	K2134278 NONE			
Sound Pressure @ 1M	66	dBA		
VFD Rating	VARIABLE 10:1			
Outline Dwg	609-0002-1115			
Conn. Diag	005010.01			
Additional Specifications:				
0				
0				
EQUIV CKT (OHMS / PHASE)				
R1	R2	X1	X2	Xm
0.7600	0.5590	2.6080	3.6970	57.4560



Speed -Torque Curve



EC Declaration of Conformity

The undersigned representing
the manufacturer:

Regal Beloit America
100 East Randolph St.
Wausau, WI 54401

and the authorized representative
established within the Community:

Marathon Electric UK
6F Thistleton Road Ind. Estate
Market Overton
Oakham, Rutland LE15 7PP UK

are committed to providing customers with products that comply with applicable regulations and international protocols to which they are subject, including the requirements of the European Parliament Directive on the Harmonization of the laws relating to electrical equipment designed for use within certain voltage limits (2014/35/EU).

Regal Beloit America declares that the following product(s), to which this declaration relates, are in conformity with the relevant sections of the EC standards listed below.

This statement supersedes any statements previously issued pertaining to the product(s) listed below and is subject to change without notice.

Model No : 213TTDWD16075

(Model No. may contain prefix and/or suffix characters)

Catalog No : U430B-P

Rework No : N/A

Directives :

Low Voltage Directive 2014/35/EU

Harmonized Standards Used :

EN 60034-1: 2010 (IEC 60034-1: 2010)

EN 60034-5: 2001/A1:2007 (IEC 60034-5: 2000/A1:2006)

Authorized Representative:



Michael A. Logsdon
Vice President, Technology

Authorized Representative in the Community:



Julian Clark
Marketing Engineer

Created on 09/28/2022

CE 22