

PRODUCT INFORMATION PACKET

marathon®
Motors

Model No: 213TTDWD16024

Catalog No: C106B

XRI® General Purpose General Purpose Motor, 10 & 7.50 HP, 3 Ph, 60 & 50 Hz, 230/460 & 190/380 V,
3600 & 3000 RPM, 213TC Frame, DP



Regal and Marathon are trademarks of Regal Rexnord Corporation or one of its affiliated companies.

©2023 Regal Rexnord Corporation, All Rights Reserved. MC017097E

RegalRexnord

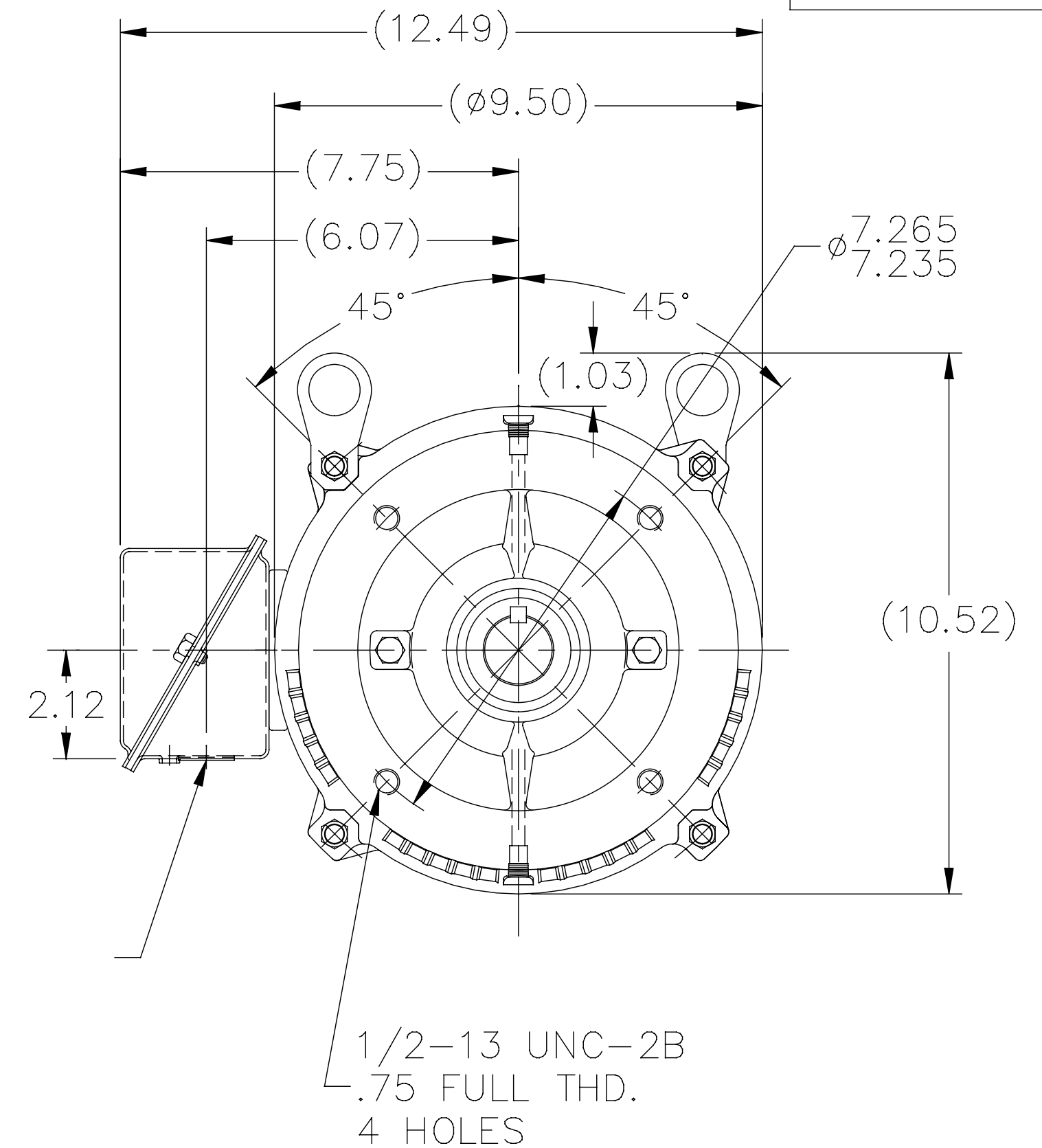
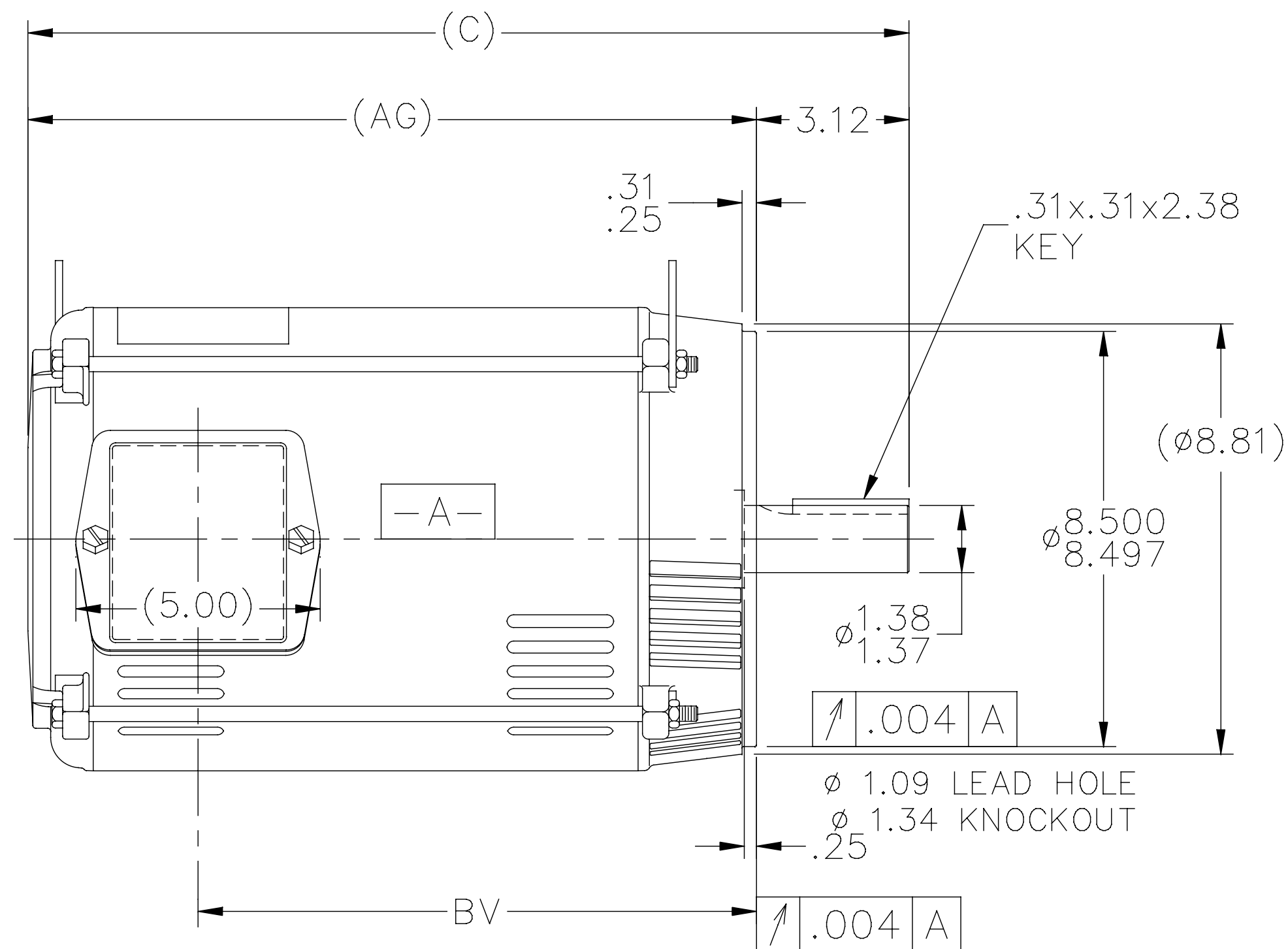
Nameplate Specifications

Phase	3	Output HP	10 & 7.50 Hp
Output KW	7.5 & 5.6 kW	Voltage	230/460 & 190/380 V
Speed	3530 & 2930 rpm	Service Factor	1.15 & 1.15
Frame	213TC	Enclosure	Drip Proof
Thermal Protection	No Protection	Efficiency	90.2 & 88.5 %
Ambient Temperature	40 °C	Frequency	60 & 50 Hz
Current	24.2/12.1 & 22.6/11.3 A	Power Factor	85.4
Duty	Continuous	Insulation Class	B
Design Code	B	KVA Code	G
Drive End Bearing Size	6309	Opp Drive End Bearing Size	6206
UL	Recognized	CSA	Y
CE	Y	IP Code	12
Number of Speeds	1		

Technical Specifications

Electrical Type	Squirrel Cage Induction Run	Starting Method	Across The Line
Poles	2	Rotation	Reversible
Resistance Main	1.4632 Ohms	Mounting	Round
Motor Orientation	Horizontal	Drive End Bearing	Ball
Opp Drive End Bearing	Ball	Frame Material	Rolled Steel
Shaft Type	T	Overall Length	18.03 in
Frame Length	11.15 in	Shaft Diameter	1.375 in
Shaft Extension	3.12 in	Assembly/Box Mounting	F1/F2 CAPABLE
Connection Drawing	005010.01	Outline Drawing	SS86595-1115


SS86595



DASH	FR.	C	AG	BV	MOUNTING
965	213T	16.53	13.41	9.93	
1115	213/15T	18.03	14.91	11.43	
1240	213/15T	19.28	16.16	12.68	

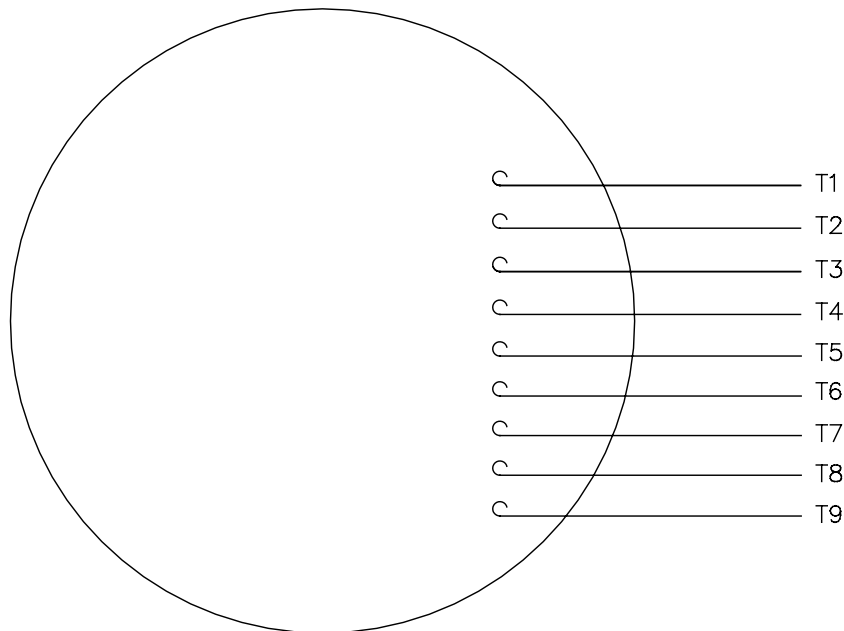
NOTES:

- NAMEPLATE TO BE READ FROM C'BOX SIDE OF MOTOR.
- BOX CAN BE MOUNTED IN 90° STEPS.

5	REDRAWN WITH REGAL LOGO	SR	17-07-2015		TOLERANCES UNLESS SPECIFIED		 Regal Beloit America, Inc.	DRAWN			DA	03-26-1996		
4	REDRAWN IN AUTOCAD	TAT	06-29-2004	ML	DEC.	INCHES		CHK	ML	04-01-1996				
3	UPDATED C' BOX GEOMETRY	CN	28425	DRS	01-31-2000	SR		.X	±.1	APPD	DN	04-01-1996		
2	REMOVED NOTE: "C' BOX CAN BE MOUNTED ON	MJD	09-02-1999		.XX	±.03	TITLE	OUTLINE	210T FR. — BB — TS — DR.PR. — C' FACE	SCALE		1=5		
	OPPOSITE SIDE OF MOTOR"	CN	23925-495		.XXX	±.005				REF				
1	NEW DRAWING — DES/DEV	DA	04-02-1996		.XXXX	±.0005	MAT'L.			FMF				
NO.	REVISION	BY & DATE		CHK	ANG	± 7'30"	FINISH					PREV		
THIS DRAWING IN DESIGN AND DETAIL IS OUR PROPERTY AND MUST NOT BE USED EXCEPT IN CONNECTION WITH OUR WORK ALL RIGHTS OF DESIGN AND INVENTION ARE RESERVED THIS IS AN ELECTRONICALLY GENERATED DOCUMENT — DO NOT SCALE THIS PRINT				RFP		CAD FILE			ss86595	SIZE	DRAWING NO.	PAGE	OF	REV.
				DIST		LB				A	SS86595			5

005010-01

VIEW FROM OUTSIDE OF MOTOR AT SWITCH END.



				TOLERANCES UNLESS SPECIFIED		 Regal Beloit America, Inc.			DRAWN	RDW 04/12/02		
				DEC.	INCHES				CHK			
				.X	±.1				APPD			
				.XX	±.01				SCALE	1=1		
				.XXX	±.005	TITLE	EXTERNAL WIRING DIAGRAM 3 PHASE W/O PROTECTOR			REF	FIG.2-51	
A	UPDATED TO REGAL LOGO		SAJ 06/26/15	AJY	.XXXX	±.0005	MAT'L. DECAL - 004014			FMF		
NO.	REVISION		BY & DATE	CHK	ANG	±1/2"	FINISH			PREV		
THIS DRAWING IN DESIGN AND DETAIL IS OUR PROPERTY AND MUST NOT BE USED EXCEPT IN CONNECTION WITH OUR WORK ALL RIGHTS OF DESIGN AND INVENTION ARE RESERVED THIS IS AN ELECTRONICALLY GENERATED DOCUMENT - DO NOT SCALE THIS PRINT				RFP	04/12/02		CAD FILE		00501001	SIZE	DRAWING NO.	REV
				DIST BRF-NLV				A	005010-01		A	

CERTIFICATION DATA SHEET

Model#: 213TTDWD16024 AA
 CONN. DIAGRAM: 005010.01
 OUTLINE: SS86595-1115

WINDING#: K2132123 NONE 3
 ASSEMBLY: F1/F2 CAPABLE

TYPICAL MOTOR PERFORMANCE DATA

HP	KW	SYNC. RPM	F.L. RPM	FRAME	ENCLOSURE	KVA CODE	DESIGN
10&7 1/2	7.50&5.60	3600	3530&2930	213TC	DP	G	B

PH	Hz	VOLTS	FL AMPS	START TYPE	DUTY	INSL	S.F	AMB°C	ELEVATION
3	60/50	230/460#190/ 380	24.2/12.1&22. 6/11.3	ACROSS THE LINE	CONTINUOU S	B4	1.15/1.15	40	3300

FULL LOAD EFF: 90.2&88.5	3/4 LOAD EFF: 91	1/2 LOAD EFF: 91	GTD. EFF	ELEC. TYPE	NO LOAD AMPS
FULL LOAD PF: 85.4&84	3/4 LOAD PF: 80.3	1/2 LOAD PF: 68.9	88.5	SQ CAGE IND RUN	10.2 / 5.1

F.L. TORQUE	LOCKED ROTOR AMPS	L.R. TORQUE	B.D. TORQUE	F.L. RISE°C
14.9 LB-FT	158 / 79	25 LB-FT 168	43.2 LB-FT 290	47

SOUND PRESSURE @ 3 FT.	SOUND POWER	ROTOR WK^2	MAX. WK^2	SAFE STALL TIME	STARTS /HOUR	APPROX. MOTOR WGT
75 dBA	85 dBA	0.45 LB-FT^2	5 LB-FT^2	15 SEC.	2	105 LBS.

*** SUPPLEMENTAL INFORMATION ***

DE BRACKET TYPE	ODE BRACKET TYPE	MOUNT TYPE	ORIENTATION	SEVERE DUTY	HAZARDOUS LOCATION	DRIP COVER	SCREENS	PAINT
C-FACE	STANDARD	ROUND	HORIZONTAL	FALSE	NONE	FALSE	NONE	GRAY (ENAMEL)

BEARINGS		GREASE	SHAFT TYPE	SPECIAL DE	SPECIAL ODE	SHAFT MATERIAL	FRAME MATERIAL
DE	OPE						
BALL	BALL	POLYREX EM	T	NONE	NONE	AISI 1045 (C-240)	ROLLED STEEL
6309	6206						

THERMO-PROTECTORS				THERMISTORS	CONTROL	SPACE /n HEATERS
THERMOSTATS	PROTECTORS	WDG RTDs	BRG RTDs			
NONE	NOT	NONE	NONE	NONE	FALSE	NONE VOLTS

If Inverter equals NONE, contact factory for further information

INVERTER TORQUE: NONE
INV. HP SPEED RANGE: NONE
ENCODER: NONE
NONE NONE
NONE NONE PPR
BRAKE: NONE NONE
NONE P/N NONE
NONE NONE
NONE FT-LB NONE V NONE Hz

*
N
O
T
E
S
*

DATE: 06/22/2017 05:03:50 AM
 FORM 3531 REV.3 02/07/99
 ** Subject to change without notice.

Data Sheet

Date: 6/20/2017

Customer: _____

Attention: _____

Submitted by: FAREEDA DUDEKULA



213TTDWD16024

Submittal

Data @ 460 V

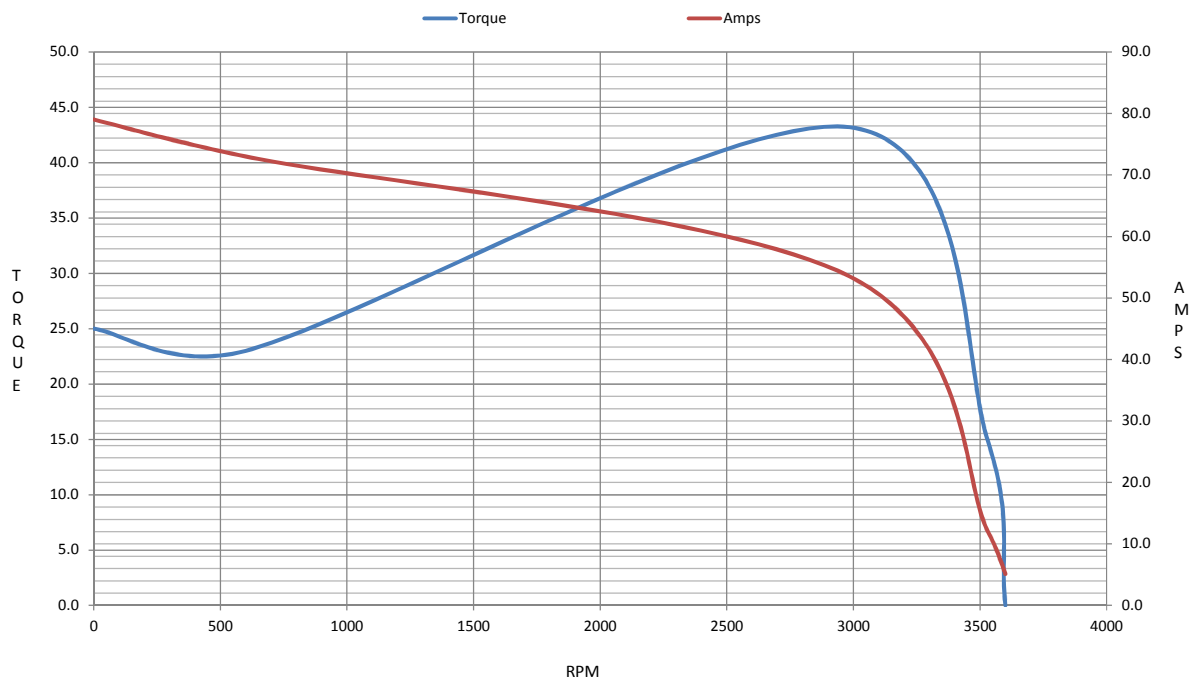
Motor Load Data

Load	0%	25%	50%	75%	100%	115%	125%	LR	
Current (Amps)	5.1	5.7	7.5	9.6	12.1	12.8	14.9	79.0	
Torque (ft-lb)	0.00	3.7	7.4	11.1	14.9	17.2	18.7	25.0	
RPM	3600	3568	3568	3552	3530	3,517	3511	0	
Efficiency (%)		86.8	91.0	91.0	90.2	89.6	89.5		
P.F. (%)	6.4	47.6	68.9	80.3	85.4	86.5	87.7	43.0	

Motor Speed Data

	LR	Pull-Up	BD	Rated	Idle																													
Speed (RPM)	0	600	2985	3530	3600																													
Current (Amps)	79.0	73.0	53.5	12.1	5.1																													
Torque (ft-lb)	25.0	23.0	43.2	14.9	0.00																													
<div><div><div>Efficiency (%)</div><div>P.F. (%)</div><div>Current (Amps)</div></div><table><caption>Graph Data Points (Estimated)</caption><thead><tr><th>Load (%)</th><th>Efficiency (%)</th><th>P.F. (%)</th><th>Current (Amps)</th></tr></thead><tbody><tr><td>25</td><td>87</td><td>4.0</td><td>5.5</td></tr><tr><td>50</td><td>91</td><td>7.5</td><td>6.5</td></tr><tr><td>75</td><td>90</td><td>10.5</td><td>7.5</td></tr><tr><td>100</td><td>89</td><td>12.5</td><td>8.5</td></tr><tr><td>125</td><td>88</td><td>13.5</td><td>15.0</td></tr></tbody></table></div>						Load (%)	Efficiency (%)	P.F. (%)	Current (Amps)	25	87	4.0	5.5	50	91	7.5	6.5	75	90	10.5	7.5	100	89	12.5	8.5	125	88	13.5	15.0	Information Block				
						Load (%)	Efficiency (%)	P.F. (%)	Current (Amps)																									
						25	87	4.0	5.5																									
						50	91	7.5	6.5																									
						75	90	10.5	7.5																									
						100	89	12.5	8.5																									
						125	88	13.5	15.0																									
						HP		10.0																										
						Sync. RPM		3600																										
						Frame		213																										
						Enclosure		DP																										
						Construction		TDW																										
						Voltage		230/460#190/381V																										
						Frequency		60 Hz																										
						Design		B																										
						LR Code letter		G																										
						Service Factor		1.15																										
						Temp Rise @ FL		47 ° C																										
						Duty		CONT																										
						Ambient		40 ° C																										
						Elevation		1,000 feet																										
						Rotor/Shaft wk²		0.45 Lb-Ft²																										
						Ref Wdg		K2132123 NONE																										
Sound Pressure @ 1M		75 dBA																																
VFD Rating		NONE																																
Outline Dwg		SS86595-1115																																
Conn. Diag		005010.01																																
Additional Specifications:																																		
0																																		
0																																		
EQUIV CKT (OHMS / PHASE)																																		
R1	R2	X1	X2	Xm																														
0.8910	0.4250	2.1840	1.2590	48.3200																														

Speed -Torque Curve



EC Declaration of Conformity

The undersigned representing
the manufacturer:

Regal Beloit America
100 East Randolph St.
Wausau, WI 54401

and the authorized representative
established within the Community:

Marathon Electric UK
6F Thistleton Road Ind. Estate
Market Overton
Oakham, Rutland LE15 7PP UK

are committed to providing customers with products that comply with applicable regulations and international protocols to which they are subject, including the requirements of the European Parliament Directive on the Harmonization of the laws relating to electrical equipment designed for use within certain voltage limits (2014/35/EU).

Regal Beloit America declares that the following product(s), to which this declaration relates, are in conformity with the relevant sections of the EC standards listed below.

This statement supersedes any statements previously issued pertaining to the product(s) listed below and is subject to change without notice.

Model No : 213TTDWD16024

(Model No. may contain prefix and/or suffix characters)

Catalog No : C106B

Rework No : N/A

Directives :

Low Voltage Directive 2014/35/EU

Harmonized Standards Used :

EN 60034-1: 2010 (IEC 60034-1: 2010)

EN 60034-5: 2001/A1:2007 (IEC 60034-5: 2000/A1:2006)

Authorized Representative:



Michael A. Logsdon
Vice President, Technology

Authorized Representative in the Community:



Julian Clark
Marketing Engineer

Created on 09/01/2022

CE 22