

PRODUCT INFORMATION PACKET

marathon®
Motors

Model No: 213TTDW4029

Catalog No: U918

7.50 HP General Purpose Motor, 3 phase, 1800 RPM, 200 V, 213T Frame, ODP
General Purpose Motors



Regal and Marathon are trademarks of Regal Rexnord Corporation or one of its affiliated companies.
©2021 Regal Rexnord Corporation, All Rights Reserved. MC017097E

RegalRexnord

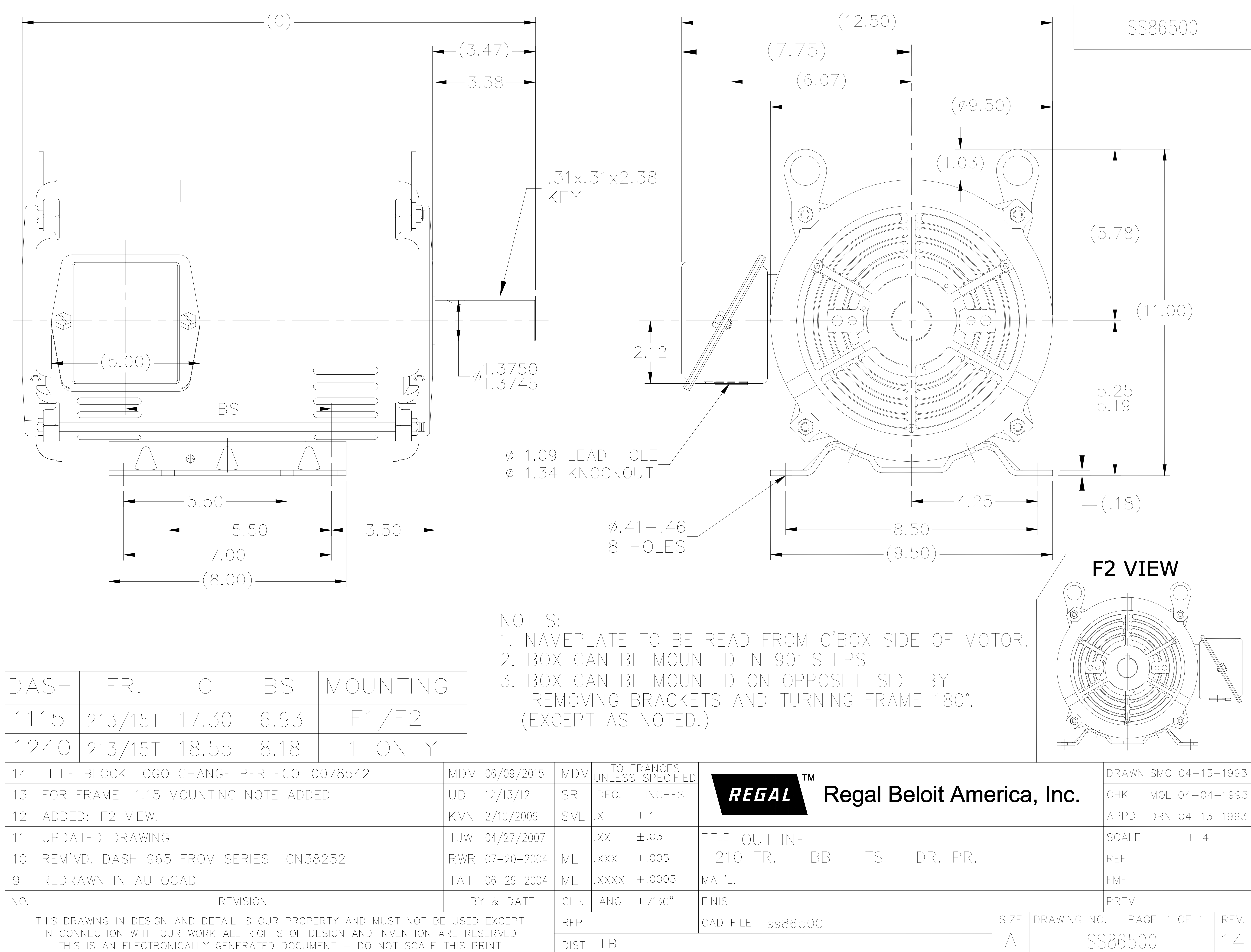
Nameplate Specifications

Output HP	7.50 Hp	Output KW	5.6 kW
Frequency	60 Hz	Voltage	200 V
Current	22.1 A	Speed	1760 rpm
Service Factor	1.15	Phase	3
Efficiency	88.5 %	Power Factor	82
Duty	Continuous	Insulation Class	B
Design Code	B	KVA Code	H
Frame	213T	Enclosure	Drip Proof
Thermal Protection	No	Ambient Temperature	40 °C
Drive End Bearing Size	6307	Opp Drive End Bearing Size	6206
UL	Recognized	CSA	Y
CE	Y	IP Code	22
Number of Speeds	1		

Technical Specifications

Electrical Type	Squirrel Cage Induction Run	Starting Method	Across The Line
Poles	4	Rotation	Reversible
Resistance Main	1.6 Ohms	Mounting	Rigid Base
Motor Orientation	Horizontal	Drive End Bearing	Ball
Opp Drive End Bearing	Ball	Frame Material	Rolled Steel
Shaft Type	T	Overall Length	17.30 in
Frame Length	11.15 in	Shaft Diameter	1.375 in
Shaft Extension	3.47 in	Assembly/Box Mounting	F2/F1 Capable
Connection Drawing	A-EE7300	Outline Drawing	A-SS86500-1115

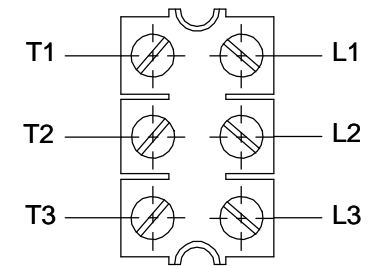
This is an uncontrolled document once printed or downloaded and is subject to change without notice. Date Created:10/12/2021



THREE PHASE - SINGLE VOLTAGE MOTOR - CONDUIT BOX @ 'A'

TO REVERSE ROTATION:
INTERCHANGE ANY TWO
LINE LEAD CONNECTIONS.

TERMINAL BLOCK WHEN SPECIFIED



IF MOTOR HAS 6 LEADS



A-9806 DECAL

OPTIONAL CORD CONNECTION



VIEW OF TERMINAL END

DRAWING REVISION AB	REVISION BY JJB	DATE 06-27-2017
ECO ECO-0125361	APPROVED BY TB	DATE 06-27-2017
ECO DESCRIPTION UPDATED TO CURRENT STANDARDS		
<small>COPYRIGHT REGAL BELOIT AMERICA, INC. ALL RIGHTS RESERVED. PROPRIETARY AND CONFIDENTIAL INFORMATION - THIS DOCUMENT IS THE PROPERTY OF REGAL BELOIT AMERICA, INC. ("OWNER") AND CONTAINS OWNER'S PROPRIETARY INFORMATION. ANY PERSON, CORPORATION OR OTHER FIRM RECEIVING IT IS DEEMED, BY RECEIVING IT, TO AGREE THAT IT, AND/OR ANY PART OF IT, SHALL NOT BE DISCLOSED TO ANY PERSON, CORPORATION OR OTHER ENTITY, DUPLICATED, AND/OR USED, EXCEPT AS EXPRESSLY APPROVED IN WRITING IN ADVANCE BY OWNER. THIS DOCUMENT SHALL BE RETURNED TO OWNER UPON REQUEST. IT MAY BE SUBJECT TO CERTAIN RESTRICTIONS UNDER APPLICABLE EXPORT CONTROL LAWS AND REGULATIONS.</small>		

DRAWN BY DA
DATE 03-26-1993
APPROVED BY TB
DATE 03-26-1993
REFERENCE
THIRD ANGLE PROJECTION



Regal Beloit America, Inc.

DESCRIPTION
CONNECTION DIAGRAM
EXTERNAL - SINGLE VOLTAGE - 3Ø MOTOR

MATERIAL PROCESS/FINISH

SIZE A	DRAWING NUMBER EE7300	SHEET 1 OF 1
-----------	--------------------------	-----------------

CERTIFICATION DATA SHEET

Model#: 213TTDW4029 AC
 CONN. DIAGRAM: A-EE7300
 OUTLINE: A-SS86500-1115

WINDING#: K2134179 NONE 2
 ASSEMBLY: F2/F1 CAPABLE

TYPICAL MOTOR PERFORMANCE DATA

HP	KW	SYNC. RPM	F.L. RPM	FRAME	ENCLOSURE	KVA CODE	DESIGN
7 1/2	5.6	1800	1760	213T	DP	H	B

PH	Hz	VOLTS	FL AMPS	START TYPE	DUTY	INSL	S.F	AMB°C	ELEVATION
3	60	200	22.1	ACROSS THE LINE	CONTINUOUS	B3	1.15	40	3300

FULL LOAD EFF: 88.5	3/4 LOAD EFF: 89.5	1/2 LOAD EFF: 88.5	GTD. EFF	ELEC. TYPE	NO LOAD AMPS
FULL LOAD PF: 82	3/4 LOAD PF: 78	1/2 LOAD PF: 69	86.5	SQ CAGE IND RUN	8.1

F.L. TORQUE	LOCKED ROTOR AMPS	L.R. TORQUE	B.D. TORQUE	F.L. RISE°C
22.5 LB-FT	146.1	45 LB-FT 200	70 LB-FT 311	30

SOUND PRESSURE @ 3 FT.	SOUND POWER	ROTOR WK^2	MAX. WK^2	SAFE STALL TIME	STARTS /HOUR	APPROX. MOTOR WGT
66 dBA	76 dBA	0.72 LB-FT^2	50 LB-FT^2	20 SEC.	2	110 LBS.

*** SUPPLEMENTAL INFORMATION ***

DE BRACKET TYPE	ODE BRACKET TYPE	MOUNT TYPE	ORIENTATION	SEVERE DUTY	HAZARDOUS LOCATION	DRIP COVER	SCREENS	PAINT
STANDARD	STANDARD	RIGID	HORIZONTAL	FALSE	NONE	FALSE	NONE	BLUE (ENAMEL)

BEARINGS		GREASE	SHAFT TYPE	SPECIAL DE	SPECIAL ODE	SHAFT MATERIAL	FRAME MATERIAL
DE	OPE						
BALL	BALL						
6307	6206	POLYREX EM	T	NONE	NONE	1144 STRESSPROOF (C-223)	ROLLED STEEL

THERMO-PROTECTORS				THERMISTORS	CONTROL	SPACE /n HEATERS
THERMOSTATS	PROTECTORS	WDG RTDs	BRG RTDs			
NONE	NOT	NONE	NONE	NONE	FALSE	NONE VOLTS

If Inverter equals NONE, contact factory for further information

* N O T E S *	INVERTER TORQUE: NONE
	INV. HP SPEED RANGE: NONE
	ENCODER: NONE
	NONE NONE NONE NONE PPR
	BRAKE: NONE NONE
	NONE P/N NONE
	NONE NONE
	- FT-LB NONE V NONE Hz

DATE: 06/22/2017 05:00:55 AM
 FORM 3531 REV.3 02/07/99
 ** Subject to change without notice.

Data Sheet

Date: 6/19/2017

Customer: _____

Attention: _____

Submitted by: FAREEDA DUDEKULA



213TTDW4029

Submittal

Data @ 200 V

Motor Load Data

Load	0%	25%	50%	75%	100%	115%	125%	LR	
Current (Amps)	8.1	9.9	13.1	17.3	22.1	25.3	27.6	146	
Torque (ft-lb)	0.00	5.5	11.0	17.0	22.5	26.0	28.5	45.0	
RPM	1800	1790	1780	1775	1760	1,755	1750	0	
Efficiency (%)		82.5	88.5	89.5	88.5	88.5	87.5		
P.F. (%)	9.0	50.0	69.0	78.0	82.0	83.0	84.0	43.0	

Motor Speed Data

	LR	Pull-Up	BD	Rated	Idle																														
Speed (RPM)	0	900	1515	1760	1800																														
Current (Amps)	146	131	104	22.1	8.1																														
Torque (ft-lb)	45.0	41.0	70.0	22.5	0.00																														
<div><div>— Efficiency (%) — P.F. (%) — Current (Amps)</div><table><caption>Graph Data</caption><thead><tr><th>Load (%)</th><th>Efficiency (%)</th><th>P.F. (%)</th><th>Current (Amps)</th></tr></thead><tbody><tr><td>0</td><td></td><td></td><td>9.5</td></tr><tr><td>25</td><td>83</td><td>50</td><td>10.5</td></tr><tr><td>50</td><td>88</td><td>75</td><td>14.5</td></tr><tr><td>75</td><td>89</td><td>80</td><td>18.5</td></tr><tr><td>100</td><td>88</td><td>83</td><td>22.5</td></tr><tr><td>125</td><td>87</td><td>84</td><td>25.0</td></tr></tbody></table></div>						Load (%)	Efficiency (%)	P.F. (%)	Current (Amps)	0			9.5	25	83	50	10.5	50	88	75	14.5	75	89	80	18.5	100	88	83	22.5	125	87	84	25.0	Information Block	
						Load (%)	Efficiency (%)	P.F. (%)	Current (Amps)																										
						0			9.5																										
						25	83	50	10.5																										
						50	88	75	14.5																										
						75	89	80	18.5																										
						100	88	83	22.5																										
						125	87	84	25.0																										
						HP		7.5																											
						Sync. RPM		1800																											
						Frame		213																											
						Enclosure		DP																											
						Construction		TDW																											
						Voltage		200 V																											
						Frequency		60 Hz																											
						Design		B																											
						LR Code letter		H																											
Service Factor		1.15																																	
Temp Rise @ FL		30 ° C																																	
Duty		CONT																																	
Ambient		40 ° C																																	
Elevation		1,000 feet																																	
Rotor/Shaft wk²		0.72 Lb-Ft²																																	
Ref Wdg		K2134179 NONE																																	
Sound Pressure @ 1M		66 dBA																																	
VFD Rating		NONE																																	
Outline Dwg		A-SS86500-1115																																	
Conn. Diag		A-EE7300																																	
Additional Specifications:																																			
0																																			
0																																			
EQUIV CKT (OHMS / PHASE)																																			
R1		R2		X1	X2	Xm																													
0.1670		0.1340		0.5710	0.8360	15.3630																													

Speed -Torque Curve

