

# PRODUCT INFORMATION PACKET



Model No: 213TTDBD36327  
Catalog No: 213TTDBD36327  
7.5,1800,DP,213T,3/60/195/390

Regal and Marathon are trademarks of Regal Rexnord Corporation or one of its affiliated companies.  
©2024 Regal Rexnord Corporation, All Rights Reserved. MC017097E





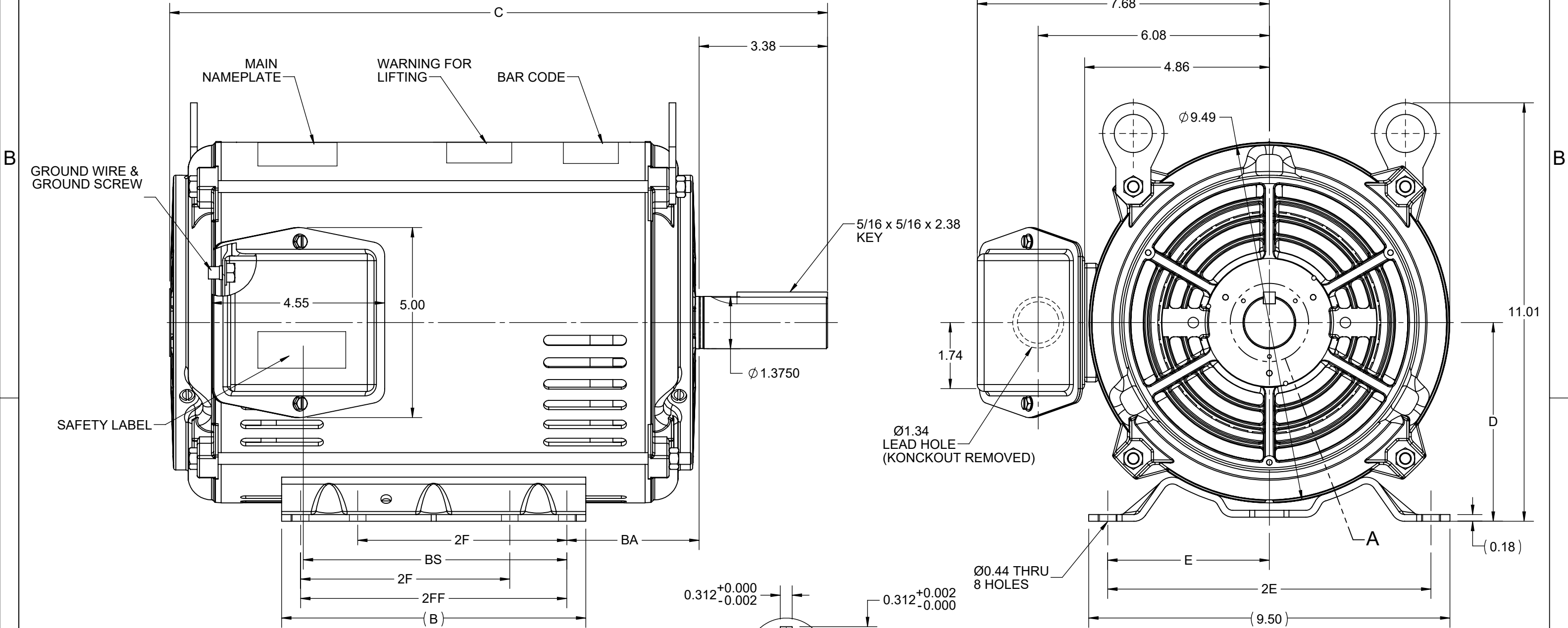
**Nameplate Specifications**

**Technical Specifications**

Shaft Diameter	1.375 in		
Outline Drawing	SS810153	Connection Drawing	EE7308

**This is an uncontrolled document once printed or downloaded and is subject to change without notice. Date Created:03/09/2024**

4				3						2	1
B	C	D	E	2E	2F	2FF	BA	BS	MOUNTING		
8.00	17.30	5.25	4.25	8.50	5.50	7.00	3.50	6.93	F1 OR F2		



LAUNDRY DUTY

PART NO-XXX  
MODEL-XXX  
FR-XXXX  
AMB-XX°C  
CODE-XXX  
DUTY-XX

PH-X TYPE-XXX  
INS.-XX DES-XXX  
ENC.-XX IP-XX  
FL EFF-XXX

SF-X.XX  
SFA-XX/XX  
KW-XX  
PF(COS)-  
FOR PWM VFD USE ONLY  
PE BRG-XX OE BRG-XX

IEC 60034-1  
IEC 60034-5

WARNING: FAILURE TO FOLLOW ALL SAFETY INFORMATION CAN RESULT IN SERIOUS PERSONAL INJURY OR DEATH - DISCONNECT ALL POWER BEFORE SERVICING - INSTALL AND GROUND PER LOCAL AND NATIONAL CODES CONSULT QUALIFIED PERSONNEL WITH ANY QUESTIONS. ASSEMBLED IN MEXICO

NAMEPLATE  
SCALE 2:000  
LABEL ARTWORK, DATA SUPPLIED BY VENDOR

DRAWING REVISION D	REVISION BY GOPI J	REV DATE/© DATE 15/02/2023
REQUEST NUMBER CR-0013640	APPROVED BY TS	DATE 15/02/2023
REQUEST NUMBER DESCRIPTION UPDATED DRAWING		
COPYRIGHT (PER REVISION DATE) REGAL BELOIT AMERICA, INC. ALL RIGHTS RESERVED. PROPRIETARY AND CONFIDENTIAL INFORMATION - THIS DOCUMENT IS THE PROPERTY OF REGAL BELOIT AMERICA, INC. ("OWNER") AND CONTAINS OWNER'S PROPRIETARY INFORMATION. ANY PERSON, CORPORATION OR OTHER FIRM RECEIVING IT IS DEEMED, BY RECEIVING IT, TO AGREE THAT IT, AND/OR ANY PART OF IT, SHALL NOT BE DISCLOSED TO ANY PERSON, CORPORATION OR OTHER ENTITY, DUPLICATED, AND/OR USED, EXCEPT AS EXPRESSLY APPROVED IN WRITING IN ADVANCE BY OWNER. THIS DOCUMENT SHALL BE RETURNED TO OWNER UPON REQUEST. IT MAY BE SUBJECT TO CERTAIN RESTRICTIONS UNDER APPLICABLE EXPORT CONTROL LAWS AND REGULATIONS.		

DRAWN BY ASHOK.N	 Regal Beloit America, Inc.	
DATE 08/04/2021		
APPROVED BY SAS	DESCRIPTION OUTLINE	
DATE 08/04/2021	213/215T FR NEMA ODP RS	
REFERENCE	MATERIAL	PROCESS/FINISH
THIRD ANGLE PROJECTION	SIZE B	DRAWING NUMBER SS810153
		SHEET 1 OF 1



				TOLERANCES UNLESS SPECIFIED		 <b>Regal</b> Beloit America, Inc.	DRAWN RM 11/20/1990				
5	CHG TO REGAL LOGO	SL 09/10/2015	AB	DEC.	INCHES		CHK ML 11/21/1990				
4	REVISED IEC NOTATIONS	MSG 11/15/2011	CMN	.X	±.1		APPD SAS 04/24/2003				
3	ADDED IEC NOTATIONS... (U1), (V1) ETC. MU95194	MSG 5/10/2010	MJS	.XX	±.02		SCALE 1=1				
2	ADDED THE OPTIONAL CORD CONNECTION MU46318	RDH 04/24/2003	DRS	.XXX	±.005	TITLE CONNECTION DIAGRAM 3ø – DUAL VOLTAGE MOTOR	REF				
1	REDRAWN	RM 11/20/1990		.XXXX	±.0005	MAT'L.	FMF				
NO.	REVISION	BY & DATE	CHK	ANG	±7"30"	FINISH	PREV				
THIS DRAWING IN DESIGN AND DETAIL IS OUR PROPERTY AND MUST NOT BE USED EXCEPT IN CONNECTION WITH OUR WORK ALL RIGHTS OF DESIGN AND INVENTION ARE RESERVED THIS IS AN ELECTRONICALLY GENERATED DOCUMENT – DO NOT SCALE THIS PRINT			RFP		CAD FILE ee7308		SIZE	DRAWING NO.	PAGE	OF	REV.
			DIST WP				A	EE7308			