

# PRODUCT INFORMATION PACKET

**marathon®**  
Motors

Model No: 213TDBD36027  
Catalog No: 213TDBD36027  
Other Purpose Motor



Regal and Marathon are trademarks of Regal Rexnord Corporation or one of its affiliated companies.  
©2023 Regal Rexnord Corporation, All Rights Reserved. MC017097E

**RegalRexnord**

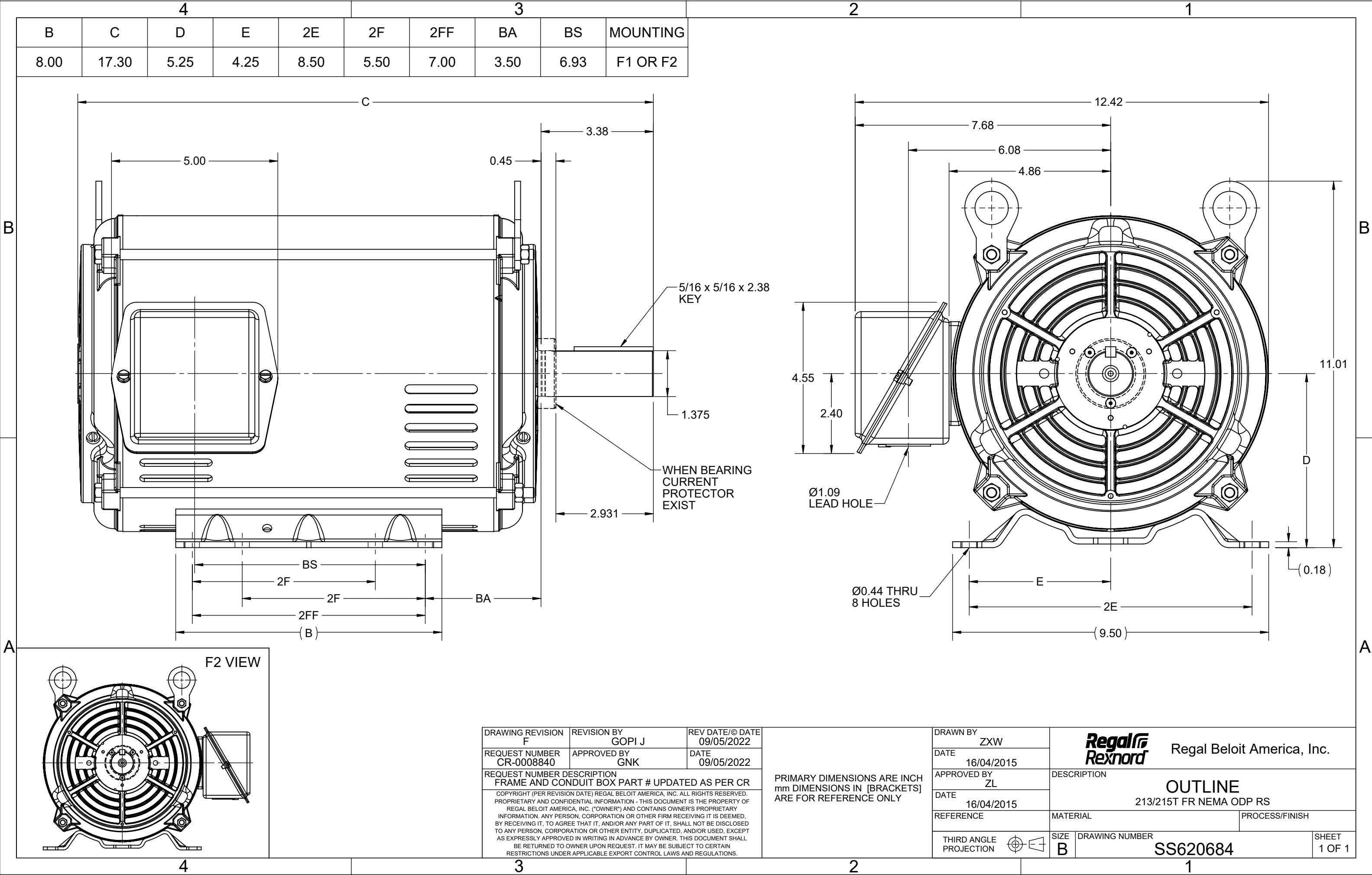


**Nameplate Specifications**

**Technical Specifications**

Shaft Diameter	1.375 in		
Outline Drawing	SS620684	Connection Drawing	EE7300

**This is an uncontrolled document once printed or downloaded and is subject to change without notice. Date Created:04/24/2023**



THREE PHASE - SINGLE VOLTAGE  
MOTOR - CONDUIT BOX @ 'A'

TO REVERSE ROTATION:  
INTERCHANGE ANY TWO LINE  
LEAD CONNECTIONS

TERMINAL BLOCK WHEN SPECIFIED

IF MOTOR HAS 9 LEADS

T1(U1) T1(U1) T1(U1) → L1

T2(V1) T2(V1) T2(V1) → L2

T3(W1) T3(W1) T3(W1) → L3

IF MOTOR HAS 6 LEADS

T1(U1) T1(U1) → L1

T2(V1) T2(V1) → L2

T3(W1) T3(W1) → L3

A-9806 DECAL




VIEW OF TERMINAL END

OPTIONAL CORD CONNECTION	
L1	WHITE
L2	RED
L3	BLACK

DRAWING REVISION AC	REVISION BY BS	REV DATE/© DATE 26/07/2022
REQUEST NUMBER CR-0010402	APPROVED BY SN	DATE 26/07/2022
REQUEST NUMBER DESCRIPTION DRAWING UPDATED		
COPYRIGHT (PER REVISION DATE) REGAL BELOIT AMERICA, INC. ALL RIGHTS RESERVED. PROPRIETARY AND CONFIDENTIAL INFORMATION - THIS DOCUMENT IS THE PROPERTY OF REGAL BELOIT AMERICA, INC. ("OWNER") AND CONTAINS OWNER'S PROPRIETARY INFORMATION. ANY PERSON, CORPORATION OR OTHER FIRM RECEIVING IT IS DEEMED, BY RECEIVING IT, TO AGREE THAT IT, AND/OR ANY PART OF IT, SHALL NOT BE DISCLOSED TO ANY PERSON, CORPORATION OR OTHER ENTITY, DUPLICATED, AND/OR USED, EXCEPT AS EXPRESSLY APPROVED IN WRITING IN ADVANCE BY OWNER. THIS DOCUMENT SHALL BE RETURNED TO OWNER UPON REQUEST. IT MAY BE SUBJECT TO CERTAIN RESTRICTIONS UNDER APPLICABLE EXPORT CONTROL LAWS AND REGULATIONS.		

PRIMARY DIMENSIONS ARE INCH  
mm DIMENSIONS IN [BRACKETS]  
ARE FOR REFERENCE ONLY

DRAWN BY DA
DATE 03-26-1993
APPROVED BY TB
DATE 03-26-1993
REFERENCE
THIRD ANGLE PROJECTION

 Regal Beloit America, Inc.	
DESCRIPTION CONNECTION DIAGRAM EXTERNAL - SINGLE VOLTAGE - 3Ø MOTOR	
MATERIAL	PROCESS/FINISH
SIZE A	DRAWING NUMBER EE7300
SHEET 1 OF 1	



P.O. BOX 8003  
WAUSAU, WI 54401-8003  
PH. 715-675-3311

DATA VOLTS: 200

### CERTIFICATION DATA SHEET

**CUSTOMER:****ORDER #:****CONN. DIAGRAM:****OUTLINE:****WINDING:****SPEED:**

EE7300

SS620684

HA31324018

R1

3

**CUSTOMER P.O. #:****REFERENCE MODEL #:****CAT #:****CUSTOMER PART #:****MOUNTING:**

213TDBD36027

#VALUE!

F1/F2 CAPABLE

### TYPICAL MOTOR PERFORMANCE DATA

HP	KW	SYNC RPM	FL RPM	FRAME	ENCLOSURE	TYPE	KVA CODE	DESIGN	
7.5	5.6	1800	1766	213T	DP	TDB	H	B	
PH	HZ	VOLTS	AMPS	START TYPE	DUTY	INSL	S.F.	AMB	ELEV.
3	60	200	22.8	ACROSS THE LINE	CONT	F	1.15	40	3300
F.L. EFF		91.0	3/4 LD EFF	91.5	1/2 LD EFF	90.0	GTD EFF	ELECT. TYPE	
F.L. PF		77.3	3/4 LD PF	72.2	1/2 LD PF	60.8	90.2	SQ CAGE IND RUN	
F.L. TORQUE		LR AMPS @ 460 V		L.R. TORQUE		B.D. TORQUE		F.L. RISE (° C)	
22.3	LB-FT	138		49.7	LB-FT	223%	72.4	LB-FT	325%
SOUND PRESSURE @ 3 FT.		SOUND	POWER	ROTOR WK²	MAX. LOAD WK²	SAFE STALL TIME	STARTS/HOUR	APPROX.	MOTOR WGT
47	dBA	56	dBA	9.8	LB-FT²	50	LB-FT²	20	SEC.
*** SUPPLEMENTAL INFORMATION ***									
DE BRACKET TYPE		ODE BRACKET TYPE		MOUNT TYPE	MOTOR ORIENTATION	SEVERE DUTY	HAZARDOUS LOCATION	DRIP COVER	SCREENS
STANDARD		STANDARD		RIGID	HORIZONTAL	NO	NONE	YES	NONE
BEARINGS		GREASE		SHAFT TYPE		SPECIAL DE		SPECIAL ODE	
DE	ODE	POLYREX EM		T		NONE		NONE	
BALL	BALL							1045 HOT ROLLED (C-204)	
6307	6207							ROLLED STEEL	
THERMOSTATS		PROTECTORS		WDG RTD's		BRG RTD's		THERMISTORS	
NONE		NOT		NONE		NONE		NONE	
R1 (ohms/ph)		R2 (ohms/ph)		X1 (ohms/ph)		X2 (ohms/ph)		Xm (ohms/ph)	
0.035916824		0.019848771		0.102835539		0.111909263		1.949149338	
VIBRATION (in/sec)		FLOAT							
0.150		ODE							
INVERTER TORQUE: NONE									
INV. HP SPEED RANGE: NONE									
ENCODER: NONE									
NONE									
NONE								NONE PPR	
BRAKE: NONE									
NONE									
FT-LB: NA									
VOLTAGE: NONE									
HZ:									
UL: V - L1ME-INS.CONST UL REC									

FORM: 3531 REV\_4

2/27/06

