

PRODUCT INFORMATION PACKET

Model No: 213TBFW7027

Catalog No: Z117

Chore ® General Purpose Farm Duty Motor, 5 HP, 1 Ph, 60 Hz, 230 V, 1800 RPM, 213TZ Frame, TEFC



Regal and Marathon are trademarks of Regal Rexnord Corporation or one of its affiliated companies.
©2022 Regal Rexnord Corporation, All Rights Reserved. MC017097E

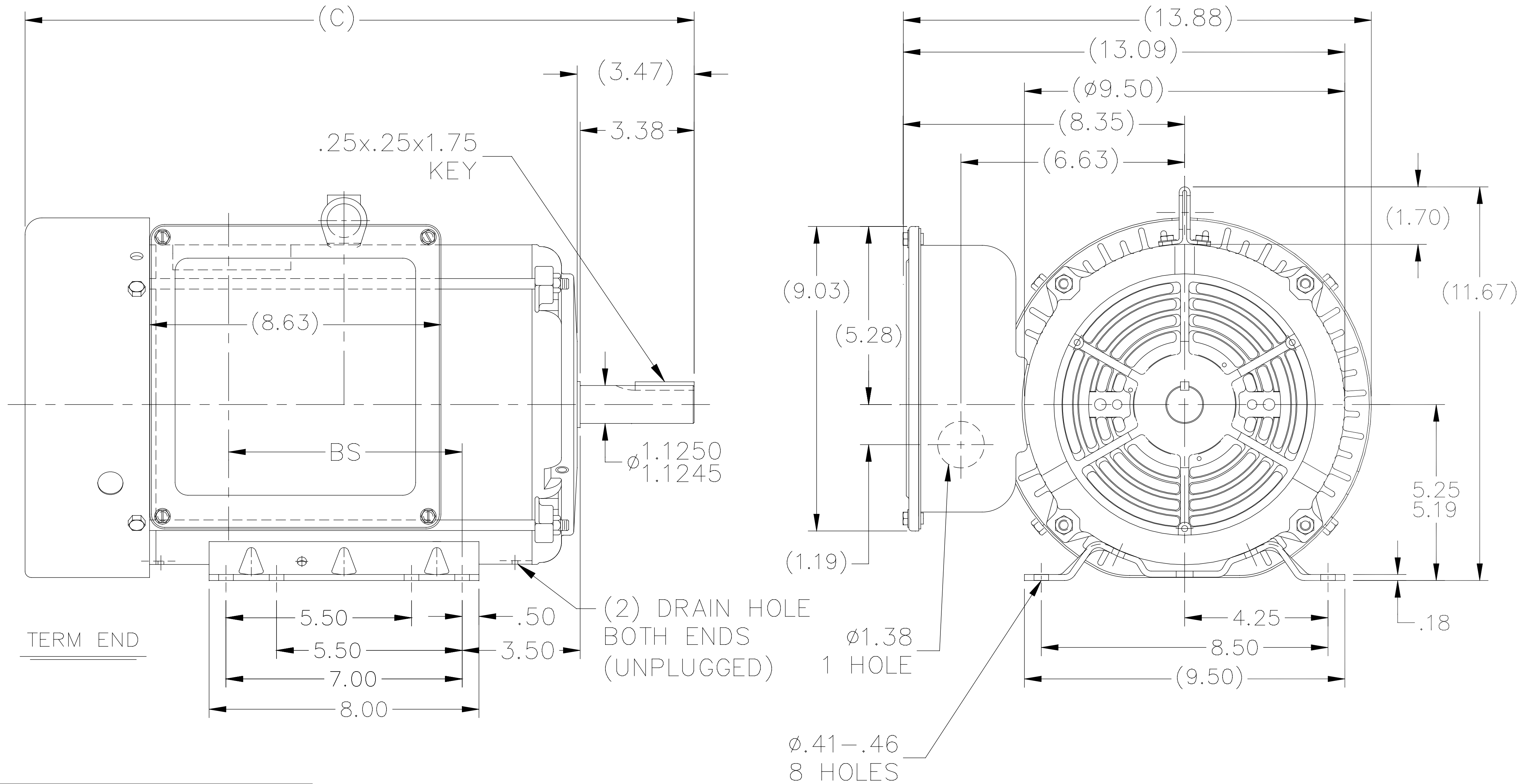
Nameplate Specifications

Output HP	5 Hp	Output KW	3.7 kW
Frequency	60 Hz	Voltage	230 V
Current	22.6 A	Speed	1740 rpm
Service Factor	1.15	Phase	1
Efficiency	82.5 %	Power Factor	83.5
Duty	Continuous	Insulation Class	F
Design Code	NO DESIGN CODE	KVA Code	K
Frame	213TZ	Enclosure	Totally Enclosed Fan Cooled
Thermal Protection	Manual	Ambient Temperature	40 °C
Drive End Bearing Size	6307	Opp Drive End Bearing Size	6206
UL	Recognized (Not Protector)	CSA	Y
CE	Y	IP Code	43
Number of Speeds	1		

Technical Specifications

Electrical Type	Capacitor Start Capacitor Run	Starting Method	Across The Line
Poles	4	Rotation	Selective Counterclockwise
Resistance Main	.308 Ohms	Mounting	Rigid Base
Motor Orientation	Horizontal	Drive End Bearing	Ball
Opp Drive End Bearing	Ball	Frame Material	Rolled Steel
Shaft Type	Single Special Extension	Overall Length	18.34 in
Frame Length	9.65 in	Shaft Diameter	1.125 in
Shaft Extension	3.47 in	Assembly/Box Mounting	F1 ONLY
Connection Drawing	A-EE9048LW	Outline Drawing	A-SS86671-965


SS86671



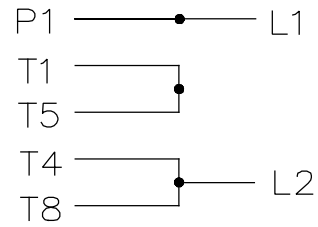
DASH	FRAME	C	BS
965	213T	18.34	5.42
1115	213/15T	19.84	6.92
1240	215T	21.09	8.17

NOTES:

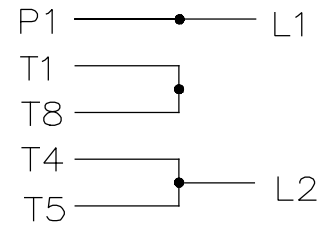
1. NAMEPLATE TO BE READ FROM C'BOX SIDE OF MOTOR.
2. DASH 965 TO BE READ FROM OPPOSITE SHAFT END.

				TOLERANCES UNLESS SPECIFIED		 Regal Beloit America, Inc.	DRAWN MH 04-17-1997		
				DEC.	INCHES		CHK ML 04-18-1997	APPD DN 04-18-1997	SCALE 7=32
				.X	±.1	TITLE OUTLINE – STEEL C' BOX 210 FR. – BB – TS – TEFC 1 ϕ	REF		
8	DRAIN HOLES ADDED	KIR 02/08/16	SS	.XXX	±.005		FMF		
7	REVISED 'B' DIMENSION 08-0118	RJW 01-22-2008	ML	.XXXX	±.0005		PREV		
NO.	REVISION	BY & DATE	CHK	ANG	±7'30"				
THIS DRAWING IN DESIGN AND DETAIL IS OUR PROPERTY AND MUST NOT BE USED EXCEPT IN CONNECTION WITH OUR WORK ALL RIGHTS OF DESIGN AND INVENTION ARE RESERVED THIS IS AN ELECTRONICALLY GENERATED DOCUMENT – DO NOT SCALE THIS PRINT				RFP	CAD FILE ss86671		SIZE A	DRAWING NO. SS86671	PAGE OF 8
				DIST LB					REV. 8

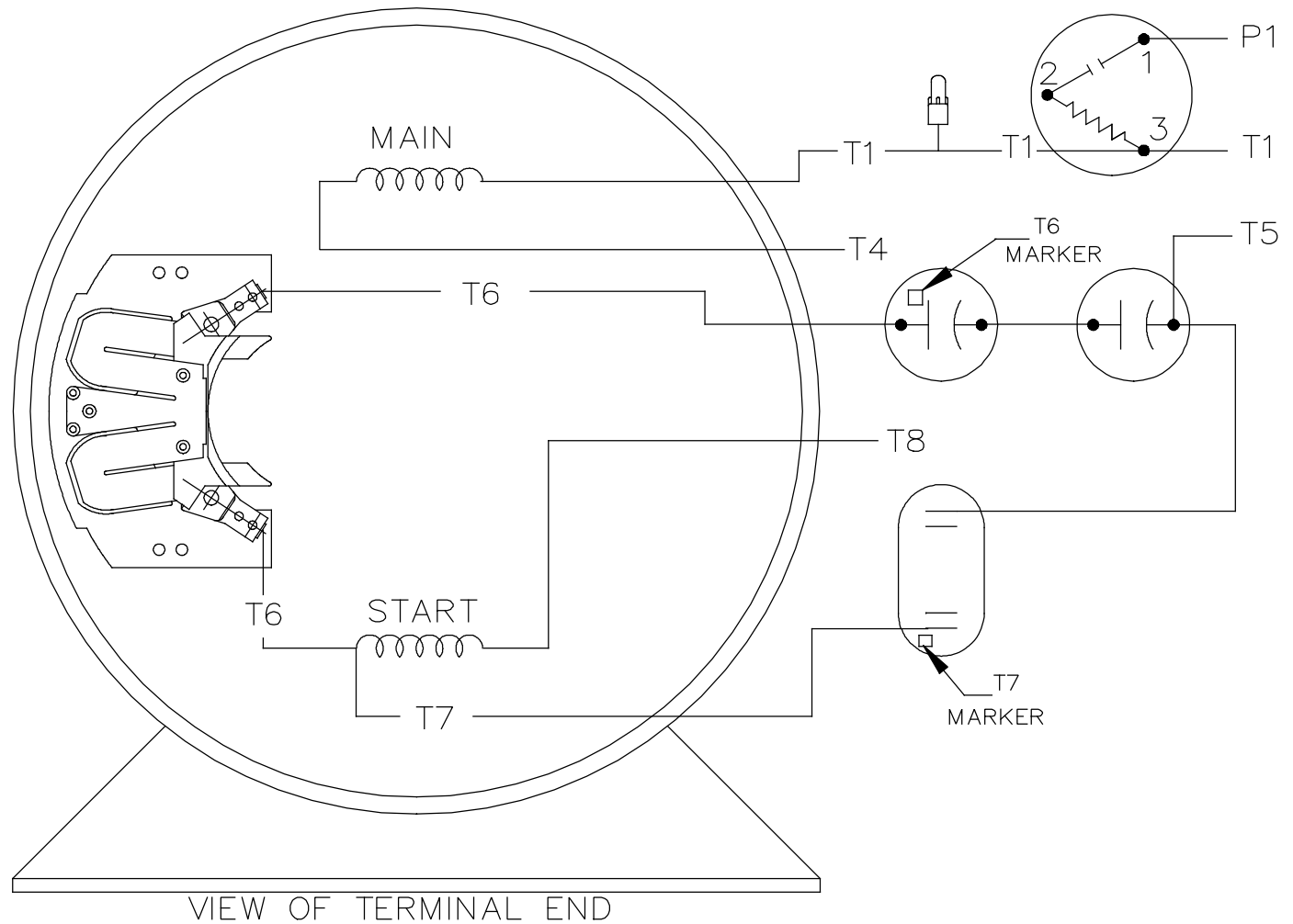
C.W. ROTATION



C.C.W. ROTATION



SINGLE VOLTAGE
CAPACITOR START
CAPACITOR RUN
REVERSIBLE



				TOLERANCES UNLESS SPECIFIED		REGAL™ Regal Beloit America, Inc.	DRAWN GK 11-05-1986		
				DEC.	INCHES		CHK ML 11-05-1986		
				.X	±.1	TITLE CONNECTION DIAGRAM	APPD FG 11-06-1986	SCALE 1=1	
2	LOGO CHANGED TO REGAL.	NK 11-29-2018	MSD .XXX	±.005			REF		
1	NEW DRAWING CN7664C	GK 11-06-1986	.XXXX	±.0005	MAT'L.		FMF		
NO.	REVISION	BY & DATE	CHK	ANG	±7'30"	FINISH	PREV		
THIS DRAWING IN DESIGN AND DETAIL IS OUR PROPERTY AND MUST NOT BE USED EXCEPT IN CONNECTION WITH OUR WORK ALL RIGHTS OF DESIGN AND INVENTION ARE RESERVED THIS IS AN ELECTRONICALLY GENERATED DOCUMENT - DO NOT SCALE THIS PRINT			RFP	CAD FILE EE9048LW		SIZE A	DRAWING NO. EE9048LW	PAGE OF 2	REV. 2
			DIST	WA					

CERTIFICATION DATA SHEET

Model#: 213TBFW7027 BD **WINDING#:** BK104124 NONE 2
CONN. DIAGRAM: A-EE9048LW **ASSEMBLY:** F1 ONLY
OUTLINE: A-SS86671-965

TYPICAL MOTOR PERFORMANCE DATA

HP	KW	SYNC. RPM	F.L. RPM	FRAME	ENCLOSURE	KVA CODE	DESIGN
5	3.7	1800	1740	213TZ	TEFC	K	NO DESIGN CODE

PH	Hz	VOLTS	FL AMPS	START TYPE	DUTY	INSL	S.F	AMB°C	ELEVATION
1	60	230	22.6	ACROSS THE LINE	CONTINUOUS	F4	1.15	40	3300

FULL LOAD EFF: 82.5	3/4 LOAD EFF: 83	1/2 LOAD EFF: 81	GTD. EFF	ELEC. TYPE	NO LOAD AMPS
FULL LOAD PF: 83.5	3/4 LOAD PF: 79.5	1/2 LOAD PF: 70.5	0	CAP START CAP RUN	9.7

F.L. TORQUE	LOCKED ROTOR AMPS	L.R. TORQUE	B.D. TORQUE	F.L. RISE°C
15 LB-FT	170	69 LB-FT 0	38.6 LB-FT 0	60

SOUND PRESSURE @ 3 FT.	SOUND POWER	ROTOR WK^2	MAX. WK^2	SAFE STALL TIME	STARTS /HOUR	APPROX. MOTOR WGT
- dBA	- dBA	- LB-FT^2	- LB-FT^2	- SEC.	-	- LBS.

***** SUPPLEMENTAL INFORMATION *****

DE BRACKET TYPE	ODE BRACKET TYPE	MOUNT TYPE	ORIENTATION	SEVERE DUTY	HAZARDOUS LOCATION	DRIP COVER	SCREENS	PAINT
STANDARD	STANDARD	RIGID	HORIZONTAL	FALSE	NONE	FALSE	NONE	BLUE (ENAMEL)

BEARINGS		GREASE	SHAFT TYPE	SPECIAL DE	SPECIAL ODE	SHAFT MATERIAL	FRAME MATERIAL
DE	OPE						
BALL	BALL	POLYREX EM	SGL SPL EXT	1.125 x 3.38 IN SEK	NONE	1144 STRESSPROOF (C-223)	ROLLED STEEL
6307	6206						

THERMO-PROTECTORS				THERMISTORS	CONTROL	SPACE /n HEATERS
THERMOSTATS	PROTECTORS	WDG RTDs	BRG RTDs			
NONE	MANUAL	NONE	NONE	NONE	FALSE	NONE VOLTS

If Inverter equals NONE, contact factory for further information

*
N
O
T
E
S
*

INVERTER TORQUE: NONE
INV. HP SPEED RANGE: NONE
ENCODER: NONE
NONE NONE
NONE NONE PPR
BRAKE: NONE NONE
NONE P/N NONE
NONE NONE
- FT-LB NONE V NONE Hz

DATE: 06/21/2017 11:08:21 AM
 FORM 3531 REV.3 02/07/99
 ** Subject to change without notice.



MARATHON ELECTRIC CORPORATION
TYPICAL PERFORMANCE CURVE for AC MOTOR

Customer

Curve at

230

Volts

HP 5.00

PHASE 1

Model No 213TBFW7027

60

HZ

VOLTS 230

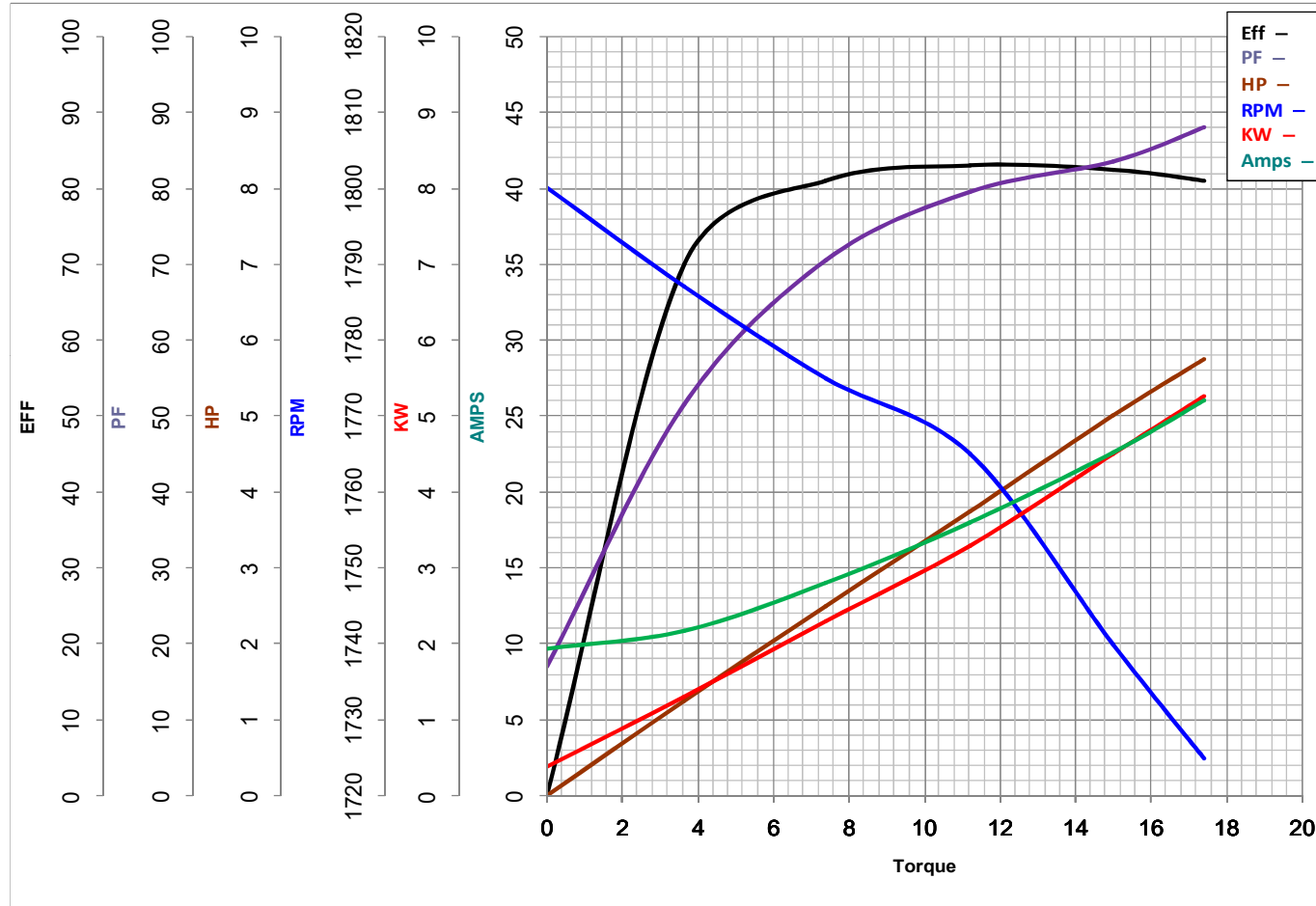
5

HP

Catalog No Z117

HZ 60

RPM 1740



Torque in Lb.Ft

FL TORQUE 15 Lb.Ft
BD TORQUE 38.6 Lb.Ft
LR TORQUE 69 Lb.Ft

FL AMPS 22.6
PU TORQUE 66.0 Lb.Ft
LR AMPS 170

WINDING BK104124-2

Date 1/10/2019

EC Declaration of Conformity

The undersigned representing
the manufacturer:

Regal Beloit America
100 East Randolph St.
Wausau, WI 54401

and the authorized representative
established within the Community:

Marathon Electric UK
6F Thistleton Road Ind. Estate
Market Overton
Oakham, Rutland LE15 7PP UK

are committed to providing customers with products that comply with applicable regulations and international protocols to which they are subject, including the requirements of the European Parliament Directive on the Harmonization of the laws relating to electrical equipment designed for use within certain voltage limits (2014/35/EU).

Regal Beloit America declares that the following product(s), to which this declaration relates, are in conformity with the relevant sections of the EC standards listed below.

This statement supersedes any statements previously issued pertaining to the product(s) listed below and is subject to change without notice.

Model No : 213TBFW7027

(Model No. may contain prefix and/or suffix characters)

Catalog No : Z117

Rework No : N/A

Directives :

Low Voltage Directive 2014/35/EU

Harmonized Standards Used :

EN 60034-1: 2010 (IEC 60034-1: 2010)

EN 60034-5: 2001/A1:2007 (IEC 60034-5: 2000/A1:2006)

Authorized Representative:



Michael A. Logsdon
Vice President, Technology

Authorized Representative in the Community:



Julian Clark
Marketing Engineer

Created on 09/01/2022

CE 22