

PRODUCT INFORMATION PACKET

marathon[®]
Motors

Model No: 200LTFC4589

Catalog No: R344

Cast Iron Motor, 30 & 30 HP, 3 Ph, 60 & 50 Hz, 230/460 & 200/400 V, 1200 & 1000 RPM, 200L Frame,
TEFC

Regal and Marathon are trademarks of Regal Rexnord Corporation or one of its affiliated companies.

©2023 Regal Rexnord Corporation, All Rights Reserved. MC017097E

RegalRexnord

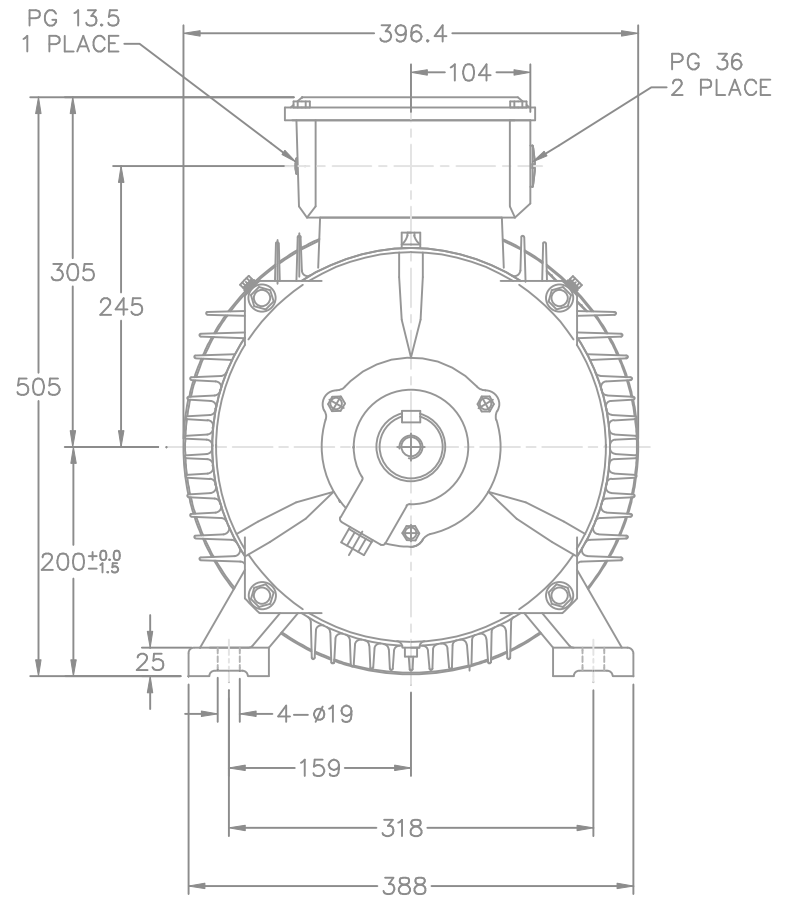
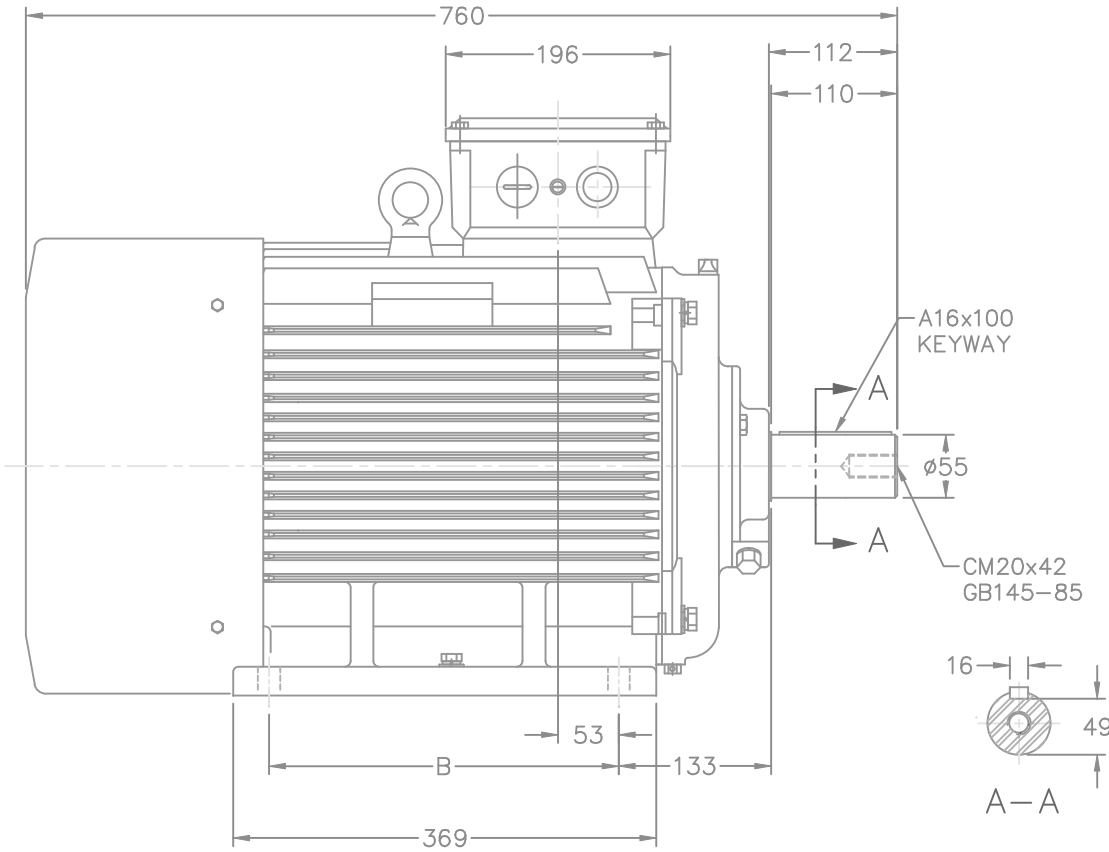


Nameplate Specifications

Phase	3	Output HP	30 & 30 Hp
Output KW	22.4 & 22.4 kW	Voltage	230/460 & 200/400 V
Speed	1175 & 975 rpm	Service Factor	1.15 & 1.0
Frame	200L	Enclosure	Totally Enclosed Fan Cooled
Thermal Protection	No Protection	Efficiency	91.7 & 90.2 %
Ambient Temperature	40 °C	Frequency	60 & 50 Hz
Current	72/36 & 83/41.5 A	Power Factor	85
Duty	Continuous	Insulation Class	F
Design Code	N (IEC)	KVA Code	H
Drive End Bearing Size	6312	Opp Drive End Bearing Size	6312
UL	Recognized	CSA	Y
CE	Y	IP Code	55
Number of Speeds	1		

Technical Specifications

Electrical Type	Squirrel Cage Inverter Rated	Starting Method	Part Wdg Start & Wye Start Delta Run Or Inverter
Poles	6	Rotation	Reversible
Resistance Main	.115 Ohms	Mounting	Rigid Base
Motor Orientation	Horizontal	Drive End Bearing	Ball
Opp Drive End Bearing	Ball	Frame Material	Cast Iron
Shaft Type	IEC	Overall Length	29.92 in
Shaft Diameter	2.166 in	Shaft Extension	4.33 in
Assembly/Box Mounting	F3		
Outline Drawing	SS620010-200L	Connection Drawing	00417203ME-03



ALL DIMENSIONS TO BE REF. DIMENSION.

FRAME	B	
200L	305	

		TOLERANCES UNLESS SPECIFIED		MARATHON ELECTRIC	DRAWN CTO 10-14-2004	
		DEC.	METRIC		CHK ML 10-21-2004	APPD SB 10-21-2004
		.X	±2.5	TITLE OUTLINE - IEC 200 FR.	SCALE 1=4.25	
		.XX	±.76		REF	
		.XXX	±.127		FMF	
		.XXXX	±.0127		PREV	
NO.	REVISION	BY & DATE	CHK	ANG ±7'30"	FINISH	
THIS DRAWING IN DESIGN AND DETAIL IS OUR PROPERTY AND MUST NOT BE USED EXCEPT IN CONNECTION WITH OUR WORK ALL RIGHTS OF DESIGN AND INVENTION ARE RESERVED THIS IS AN ELECTRONICALLY GENERATED DOCUMENT - DO NOT SCALE THIS PRINT				RFP	CAD FILE SS620010	SIZE B
				DIST WA		DRAWING NO. SS620010
						PAGE OF
						REV.