

PRODUCT INFORMATION PACKET



Model No: 199989.00

Catalog No: 199989.00

Obsolete Replaced by B199989.00..20..1800.256JP.ODP.230/460.3.60/50HZ.CONT.40C..RIGID C-FACE.....

.....



Regal and Leeson are trademarks of Regal Rexnord Corporation or one of its affiliated companies.

©2023 Regal Rexnord Corporation, All Rights Reserved. MC017097E





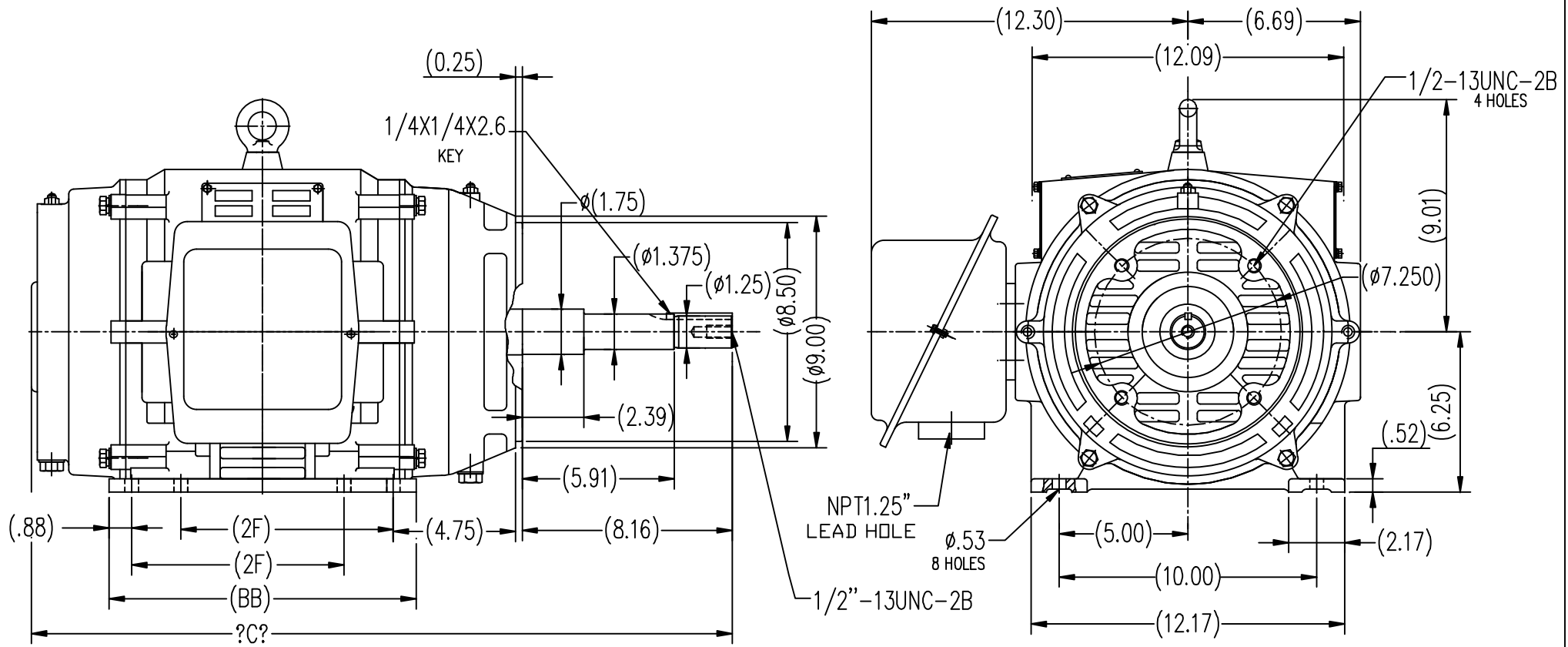
Nameplate Specifications

Phase	3	Output HP	20 & 15 Hp
Output KW	14.9 & 11.2 kW	Voltage	230/460 & 190/380 V
Speed	1773 & 1475 rpm	Service Factor	1.15 & 1.15
Frame	256JP	Enclosure	Drip Proof
Thermal Protection	No Protection	Efficiency	93 & 92.4 %
Ambient Temperature	40 °C	Frequency	60 & 50 Hz
Current	48/24 & 44/22.1 A	Power Factor	82
Duty	Continuous	Insulation Class	F
Design Code	B	KVA Code	G
Drive End Bearing Size	6309	Opp Drive End Bearing Size	6208
UL	Recognized	CSA	Y
CE	Y	IP Code	22
Number of Speeds	1		

Technical Specifications

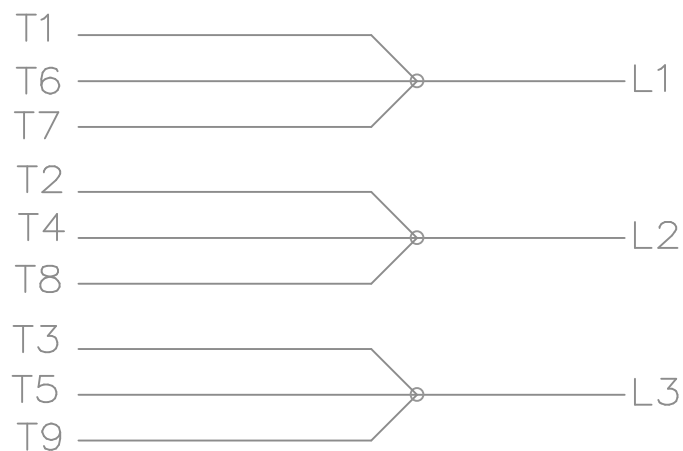
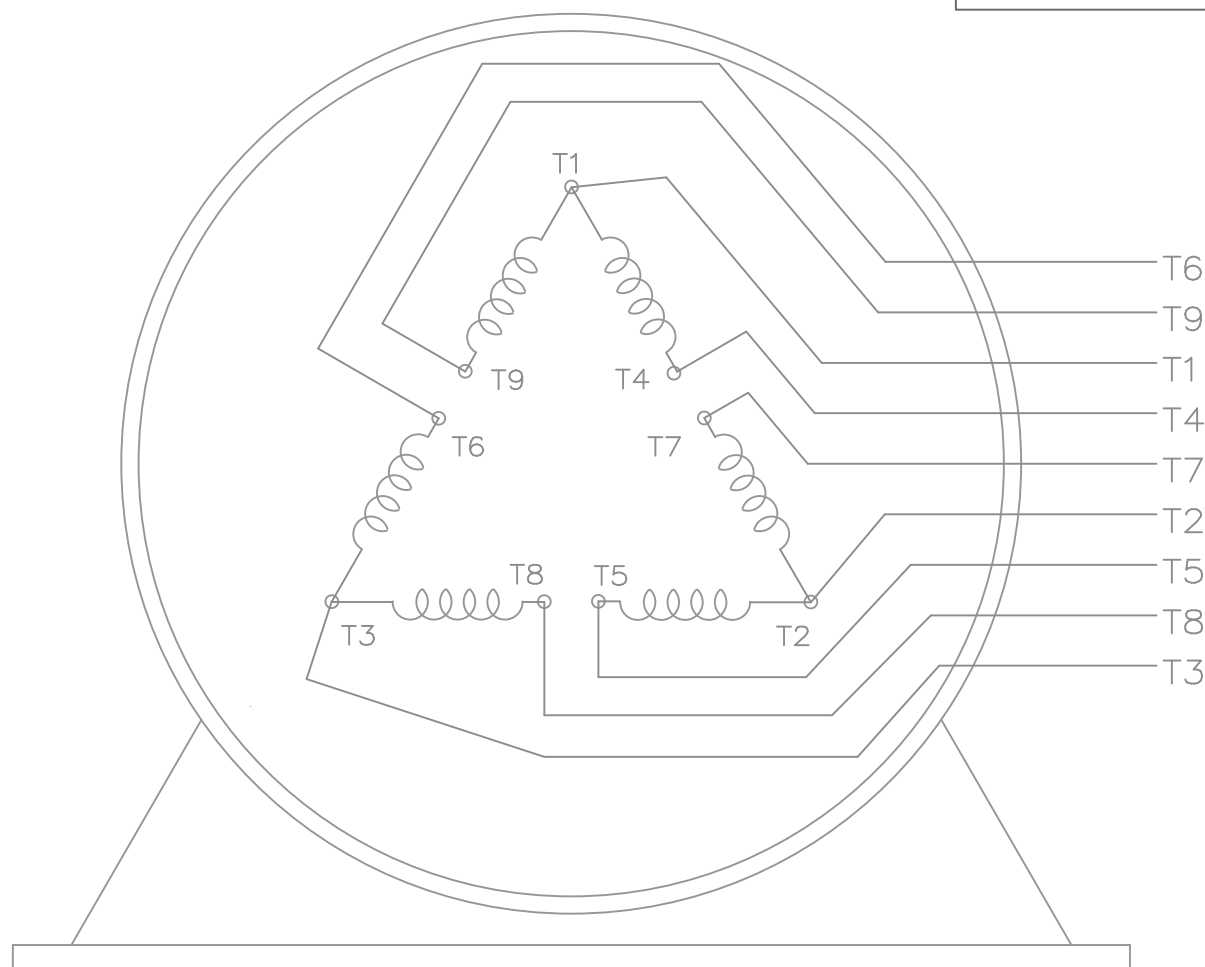
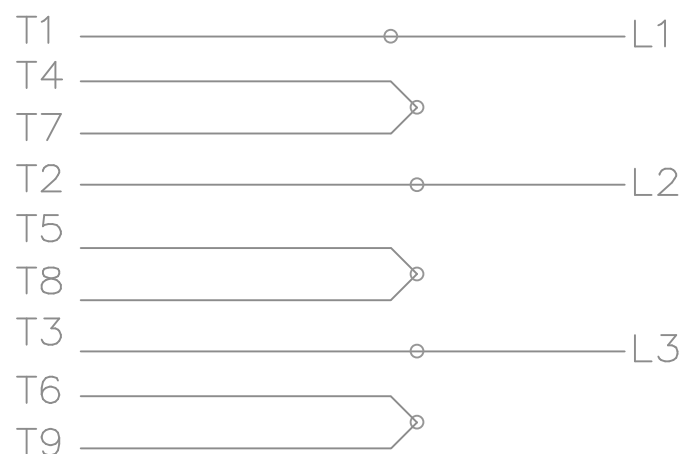
Electrical Type	Squirrel Cage Inverter Rated	Starting Method	Line Or Inverter
Poles	4	Rotation	Reversible
Resistance Main	.455 Ohms	Mounting	Rigid Base
Motor Orientation	Horizontal	Drive End Bearing	Ball
Opp Drive End Bearing	Ball	Frame Material	Cast Iron
Shaft Type	JP	Assembly/Box Mounting	F1/F2 CAPABLE
Inverter Load	VARIABLE 10:1		
Outline Drawing	SS620572	Connection Drawing	EE7308K_LE

This is an uncontrolled document once printed or downloaded and is subject to change without notice. Date Created:06/22/2023




254T	8.25	12.00	27.32
256T	10.00	13.59	28.9
FRAME	2F	BB	C

		TOLERANCES UNLESS SPECIFIED		REGAL-BELOIT CORPORATION		DRAWN L.S.J 05-16-2012	
		DEC.	INCHES			CHK	
		.X	±.1	TITLE OUTLINE ODP-254/256JP FR-CAST IRON		APPD	
		.XX	±.03			SCALE	1=6
		.XXX	±.005			REF	
		.XXXX	±.0005	MAT'L.		FMF	HWADA
				FINISH		PREV	
NO.	REVISION	BY & DATE	CHK	ANG	±1/2		
THIS DRAWING IN DESIGN AND DETAIL IS OUR PROPERTY AND MUST NOT BE USED EXCEPT IN CONNECTION WITH OUR WORK ALL RIGHTS OF DESIGN AND INVENTION ARE RESERVED THIS IS AN ELECTRONICALLY GENERATED DOCUMENT - DO NOT SCALE THIS PRINT				RFP	CAD FILE	SS620572	SIZE
				DIST			DRAWING NO.
							B
							SS620572
							REV.

LOW VOLTAGEHIGH VOLTAGE

VIEW OF TERMINAL END

				TOLERANCES UNLESS SPECIFIED		 ELECTRIC MOTORS GEARMOTORS AND DRIVES	DRAWN KJC 01-27-2003			
				DEC.	INCHES		CHK ML 01-28-2003			
				.X	±.1		APPD TB 01-28-2003			
				.XX	±.02	TITLE CONNECTION DIAGRAM DELTA CONN. - 3Ø - 9 LEADS	SCALE 1.5=1			
				.XXX	±.005		REF			
01	NEW DRAWING CN36099	KJC 01-28-2003	TB	.XXXX	±.0005	MAT'L.	FMF			
NO.	REVISION	BY & DATE	CHK	ANG	±7'30"	FINISH	PREV			
THIS DRAWING IN DESIGN AND DETAIL IS OUR PROPERTY AND MUST NOT BE USED EXCEPT IN CONNECTION WITH OUR WORK ALL RIGHTS OF DESIGN AND INVENTION ARE RESERVED THIS IS AN ELECTRONICALLY GENERATED DOCUMENT - DO NOT SCALE THIS PRINT				RFP	CAD FILE EE7308K-LE		SIZE	DRAWING NO.	PAGE	OF
				DIST WP			A	EE7308K-LE		01



CERTIFICATION DATA SHEET

1051 CHEYENNE AVE.
GRAFTON, WI 53024
PH. 262-377-8810

CONN. DIAGRAM: EE7308K_LE

CATALOG #: 199989.00

OUTLINE: SS620572

MOUNTING: F1/F2 CAPABLE

WINDING #: CHT25640006 1

TYPICAL MOTOR PERFORMANCE DATA

HP	kW	SYNC. RPM	F.L. RPM	FRAME	ENCLOSURE	KVA CODE	DESIGN
20&15	14.9&11.2	1800	1773&1475	256JP	DP	G	B

PH	Hz	VOLTS	AMPS	START TYPE	DUTY	INSL	S.F.	AMB°C
3	60/50	230/460&190/380	48/24&44/22.1	LINE OR INVERTER	CONTINUOUS	F3	1.15/1.15	40

FULL LOAD EFF:	93&92.4	3/4 LOAD EFF:	93	1/2 LOAD EFF:	91.7	GTD. EFF	ELEC. TYPE
FULL LOAD PF:	82&81.5	3/4 LOAD PF:	77.5	1/2 LOAD PF:	67	92.4	SQ CAGE INV RATED

F.L. TORQUE	LOCKED ROTOR AMPS	L.R. TORQUE	B.D. TORQUE	F.L. RISE°C
59.2 LB-FT	280 / 140	120 LB-FT 202 %	165 LB-FT 278 %	45

SOUND PRESSURE @ 3 FT.	SOUND POWER	ROTOR WK^2	MAX. WK^2	SAFE STALL TIME	STARTS / HOUR	APPROX. MOTOR WGT
74 dBA	84 dBA	3 LB-FT^2	125 LB-FT^2	20 SEC.	2	325 LBS.

*** SUPPLEMENTAL INFORMATION ***

DE BRACKET TYPE	ODE BRACKET TYPE	MOUNT TYPE	ORIENTATION	SEVERE DUTY	HAZARDOUS LOCATION	DRIP COVER	SCREENS	PAINT
C-FACE	STANDARD	RIGID	HORIZONTAL	FALSE	NONE	FALSE	NONE	BLUE - LEESON (ENAMEL)

BEARINGS		GREASE	SHAFT TYPE	SPECIAL DE	SPECIAL ODE	SHAFT MATERIAL	FRAME MATERIAL
DE	ODE						
BALL	BALL	POLYREX EM	JP	NONE	NONE	1045 HOT ROLLED (C-204)	CAST IRON
6309	6208						

THERMO-PROTECTORS				THERMISTORS	CONTROL	SPACE HEATERS
THERMOSTATS	PROTECTORS	WDG RTDs	BRG RTDs			
NONE	NOT	NONE	NONE	NONE	FALSE	NONE VOLTS

*

N

O

T

E

S

INVERTER TORQUE: VARIABLE 10:1

INV. HP SPEED RANGE: NONE

ENCODER: NONE

NONE NONE

NONE NONE PPR

BRAKE: NONE NONE

NONE P/N NONE

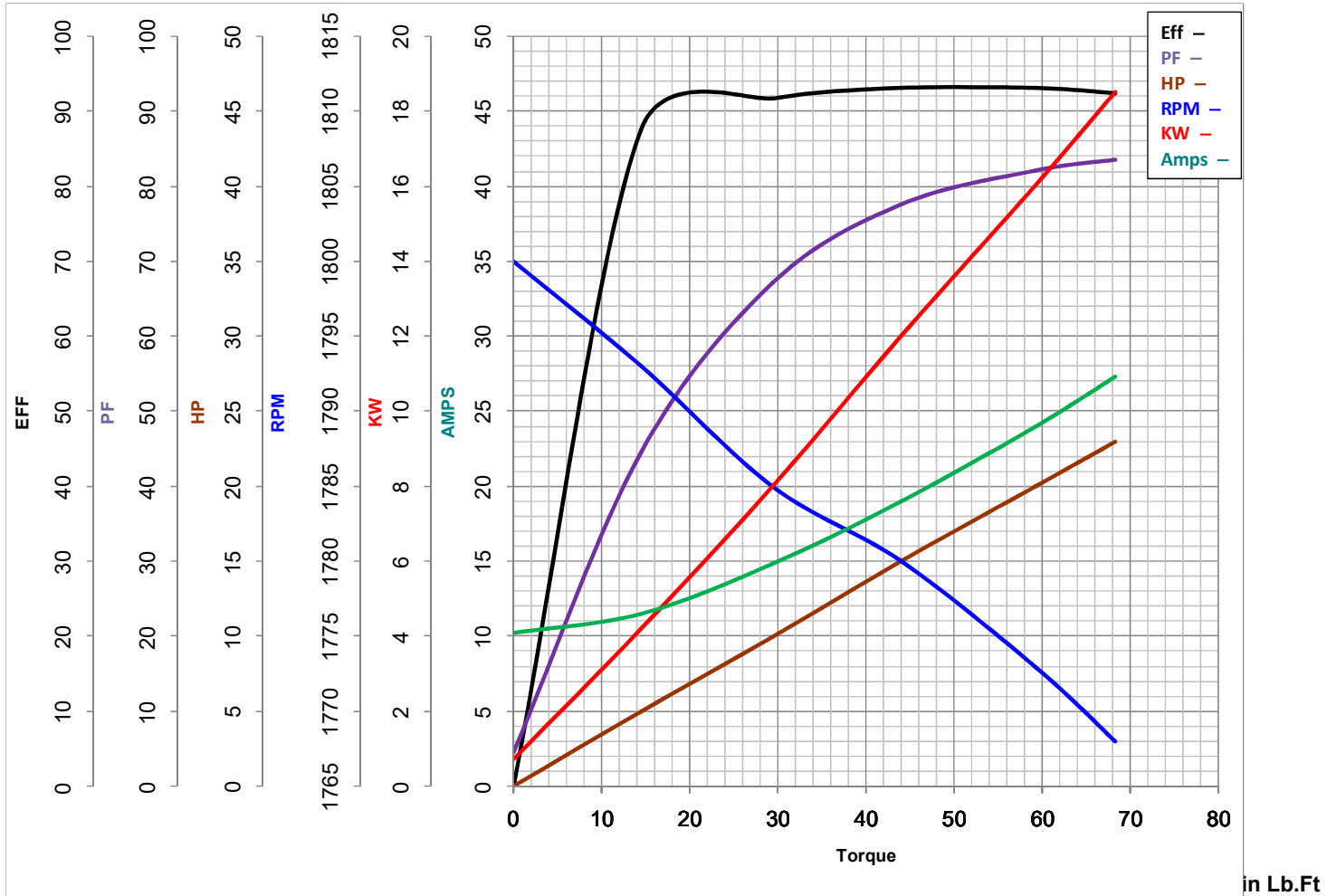
NONE NONE

FT-LB NONE V NONE Hz



LEESON ELECTRIC CORPORATION

TYPICAL PERFORMANCE CURVE for AC MOTOR

Model No 199989.00Curve at 460
60
20Volts
HZ
HPHP 20&15PHASE 3VOLTS 230/460&190/380Catalog No 199989.00HZ 60&50RPM 1773&1475

FL TORQUE 59.2 Lb.Ft
 BD TORQUE 165.0 Lb.Ft
 LR TORQUE 120 Lb.Ft

FL AMPS 48/24
 PU TORQUE 108.0 Lb.Ft
 LR AMPS 140

WINDING CHT25640006-1

Date 10/26/2018